

Oxford Companies
734.665.6500
oxfordcompanies.com



Integrated
Real Estate
Services



Office Building For Lease

Eisenhower Commerce Bldg 5
1500 Eisenhower Pl, Suite 1514
Ann Arbor, MI 48108

7,298 SF
\$15.00 SF/yr (NNN)



Contact Karen O'Neil for
more information or to
schedule a tour.

Office: 734.665.6500
Cell: 734.323.4263
koneil@oxfordcompanies.com

Eisenhower Commerce Bldg 5
1500 Eisenhower Pl. Suite 1514
Ann Arbor, MI 48108



Integrated
Real Estate
Services



OFFERING SUMMARY

Lease Rate:	\$15.00 SF/yr (NNN)
Available SF:	7,298 SF
Year Built:	1987
Parking Ratio:	3.83
Zoning:	M-1
Submarket:	South Ann Arbor

PROPERTY OVERVIEW

The Eisenhower Commerce Center consists of five flex buildings in Ann Arbor's bustling Southside corridor--the hub of Ann Arbor's thriving research and technology industries. These premium industrial, lab, and R&D spaces are in the perfect location for businesses looking to expand their Ann Arbor office space footprints. ECC tenants enjoy convenient access to I-94 and proximity to other business parks, hotels, and downtown Ann Arbor. This location puts you in the heart of the action – great for networking and business travel. The buildings themselves boast an attractive brick exterior and ample parking, and are nestled in a peaceful, wooded setting surrounded by natural landscaping. On the inside you'll find a blank canvas that can be easily customized to your business needs.

PROPERTY HIGHLIGHTS

- Nestled in a peaceful, wooded setting
- Attractive brick exterior surrounded by natural landscaping
- Overhead doors and high ceilings
- Easy access to I-94 and US-23 and minutes from downtown Ann Arbor and U-M
- At the hub of the city's thriving research and technology industries
- Surrounded by other business parks and hotels
- Plenty of free parking adjacent to building



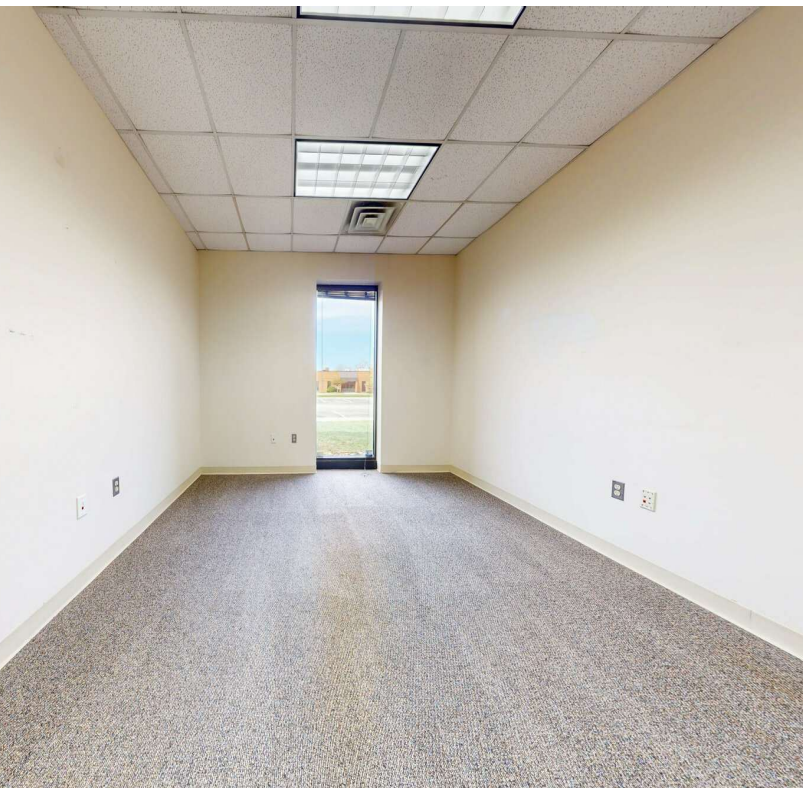
Contact Karen O'Neil for more information or to schedule a tour.

Office: 734.665.6500
Cell: 734.323.4263
koneil@oxfordcompanies.com

Eisenhower Commerce Bldg 5
1500 Eisenhower Pl. Suite 1514
Ann Arbor, MI 48108



Integrated
Real Estate
Services



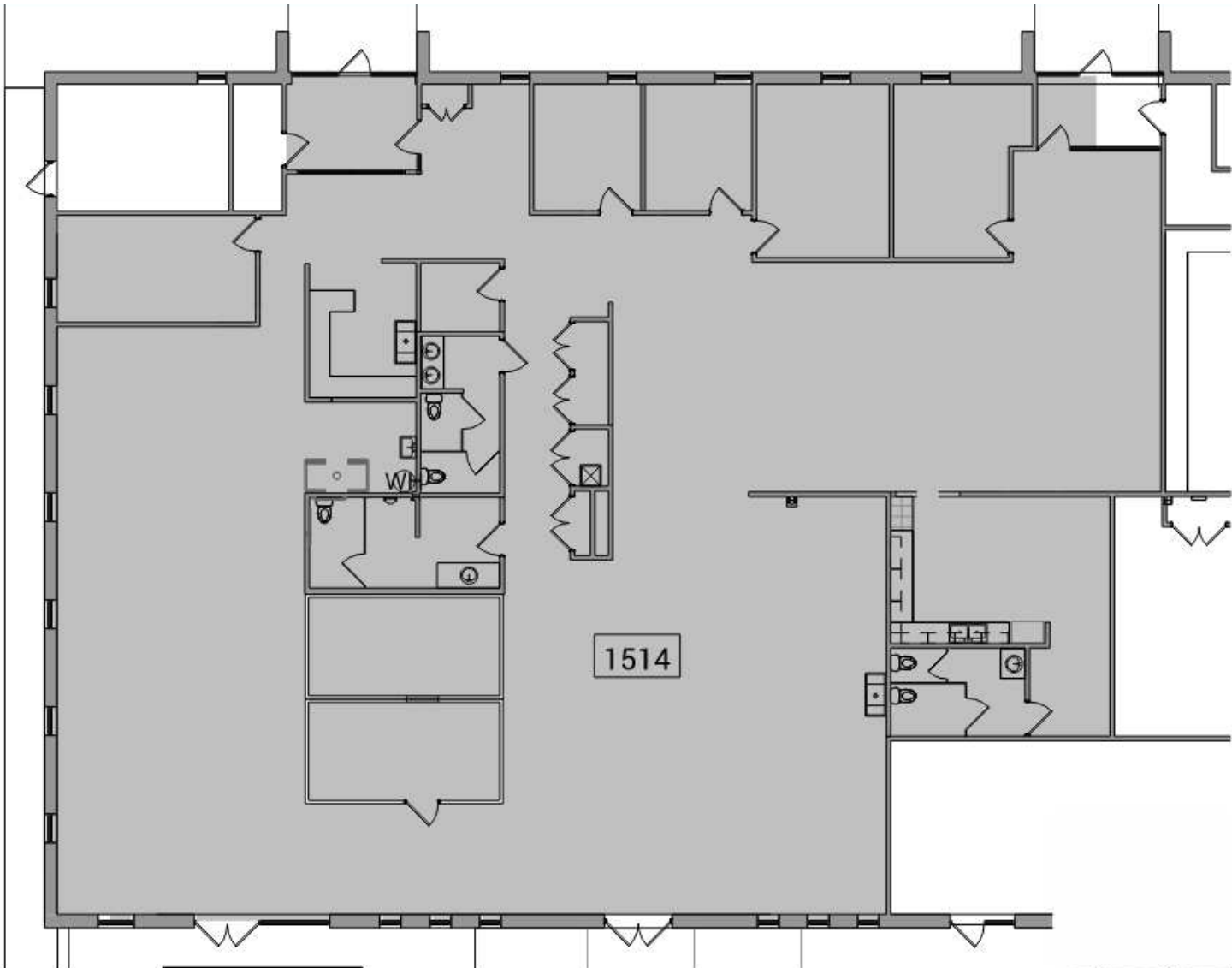
Contact Karen O'Neil for
more information or to
schedule a tour.

Office: 734.665.6500
Cell: 734.323.4263
koneil@oxfordcompanies.com

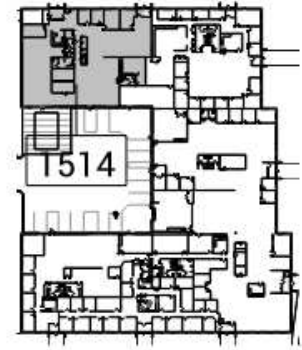
Eisenhower Commerce Bldg 5
1500 Eisenhower Pl. Suite 1514
Ann Arbor, MI 48108



Integrated
Real Estate
Services



2 Suite 1514 - Partial Level 1 Existing Floor Plan
1514 8' 16' 32' 1/16" = 1'-0"



1 Key Plan - Level 1
1514 160' 320' 1" = 160'-0"



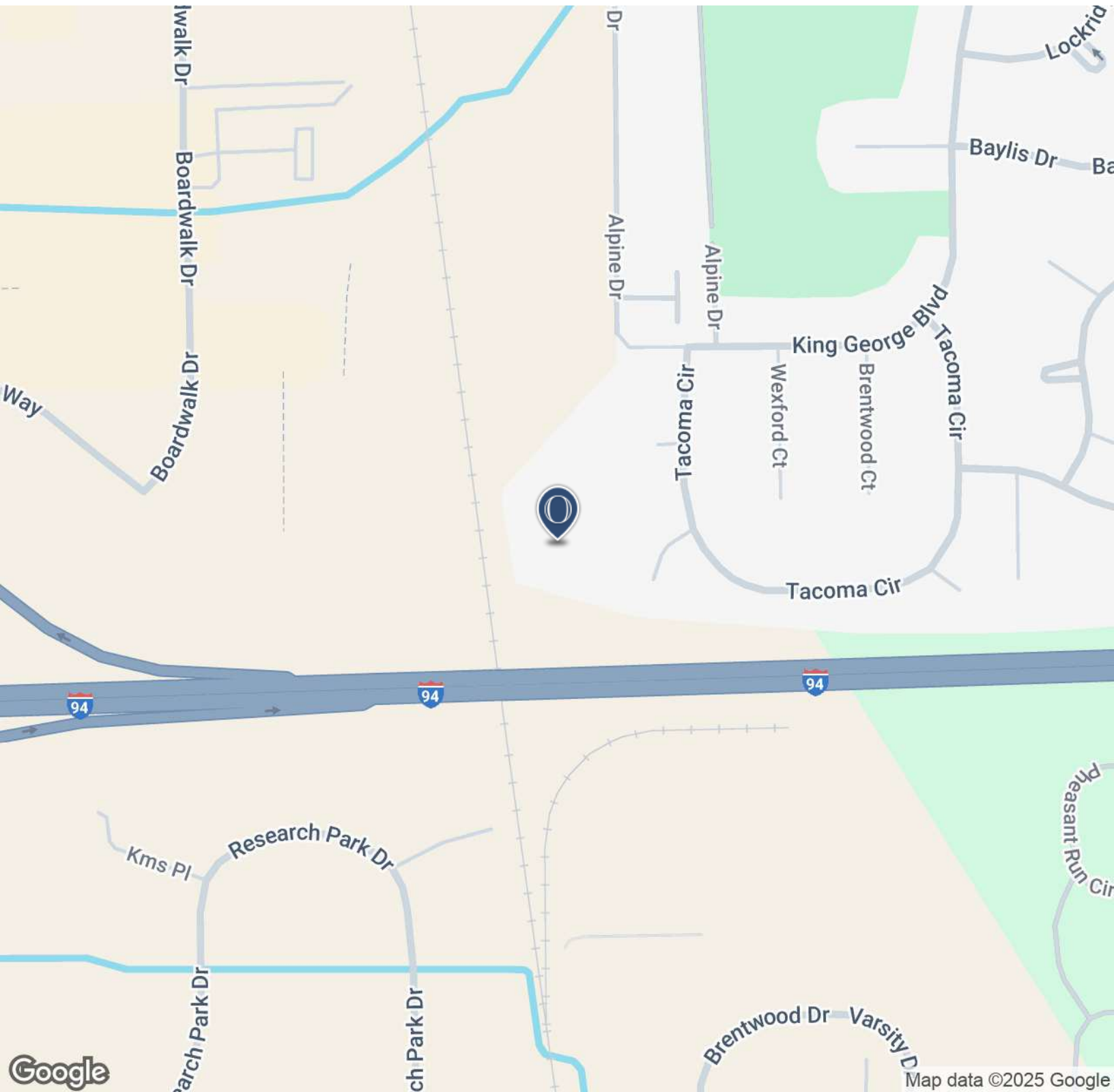
Contact Karen O'Neil for more information or to schedule a tour.

Office: 734.665.6500
Cell: 734.323.4263
koneil@oxfordcompanies.com

Eisenhower Commerce Bldg 5
1500 Eisenhower Pl. Suite 1514
Ann Arbor, MI 48108



Integrated
Real Estate
Services



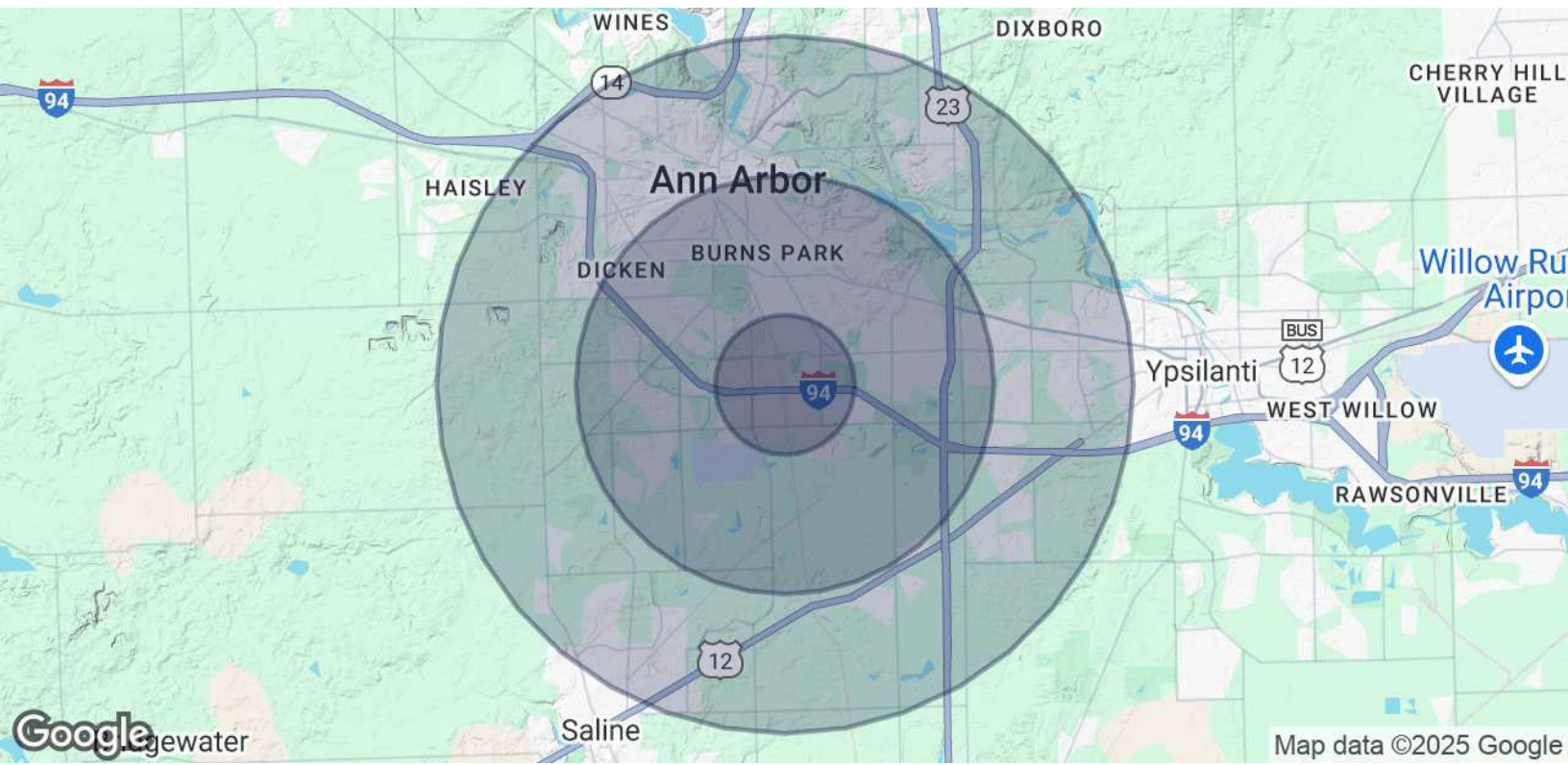
Contact Karen O'Neil for
more information or to
schedule a tour.

Office: 734.665.6500
Cell: 734.323.4263
koneil@oxfordcompanies.com

Eisenhower Commerce Bldg 5
 1500 Eisenhower Pl. Suite 1514
 Ann Arbor, MI 48108



Integrated
 Real Estate
 Services



POPULATION	1 MILE	3 MILES	5 MILES
Total Population	9,432	82,352	188,275
Average Age	32.0	31.3	32.5
Average Age (Male)	32.2	31.3	32.2
Average Age (Female)	31.8	31.4	32.8
HOUSEHOLDS & INCOME	1 MILE	3 MILES	5 MILES
Total Households	4,347	31,812	73,680
# of Persons per HH	2.2	2.6	2.6
Average HH Income	\$57,191	\$77,730	\$77,935
Average House Value	\$138,542	\$342,141	\$315,557

2020 American Community Survey (ACS)



Contact Karen O'Neil for more information or to schedule a tour.

Office: 734.665.6500
 Cell: 734.323.4263
koneil@oxfordcompanies.com