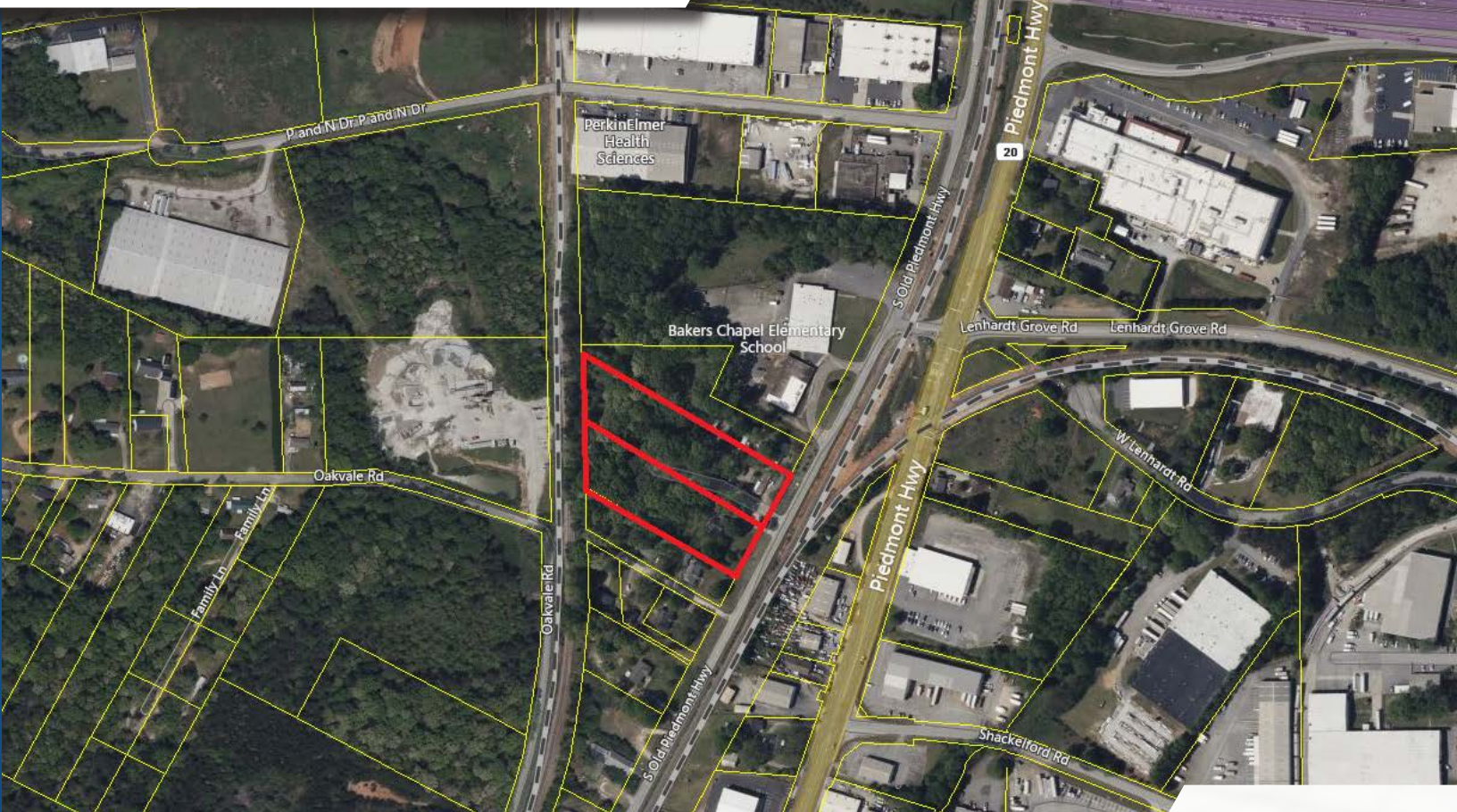


541 & 545 South Old Piedmont Hwy

Greenville SC, 29611



PROPERTY DETAILS



±3.8 ACRES



ZONED I-1



±300ft of Road Frontage



Possibility for additional
adjoining acreage



Tax Map#: WG10010300400 &
Tax Map#: WG10010300500

\$1,100,000



Jim Brown, CCIM
Commercial Sales & Leasing
(864) 303-3333
jimbrown@flagshipsc.com