

FOR LEASE

# NORTHPARK XVII

NorthPark Business Park | 7020-H Reames Road | Charlotte, NC 28216



## PROPERTY HIGHLIGHTS

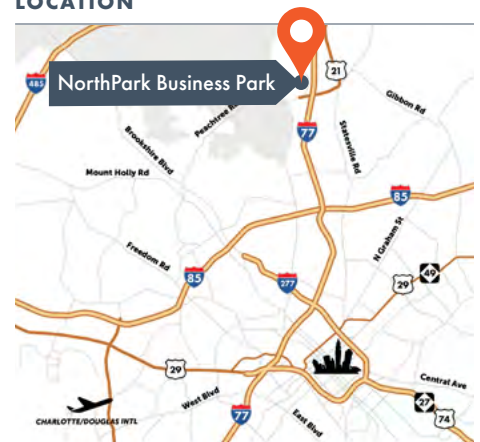


Located near two major Charlotte highways and close proximity to Uptown, you'll want to call NorthPark Business Park home for your business. As one of the largest industrial parks in Charlotte, NorthPark Business Park features 19 buildings with more than 2 million square feet of industrial space.

With easy access on and off the interstate, NorthPark XVII offers +/- 120,000 square feet with the following features:

- Class A Master-Planned Business Park
- 120,000 SF total
- 24' clear height
- 40'-wide x 40'-deep column spacing
- 120'-deep concrete and asphalt truck court
- Rear loading dock location
- ESFR sprinkler system
- Zoned I-1, CD
- On-site trailer parking

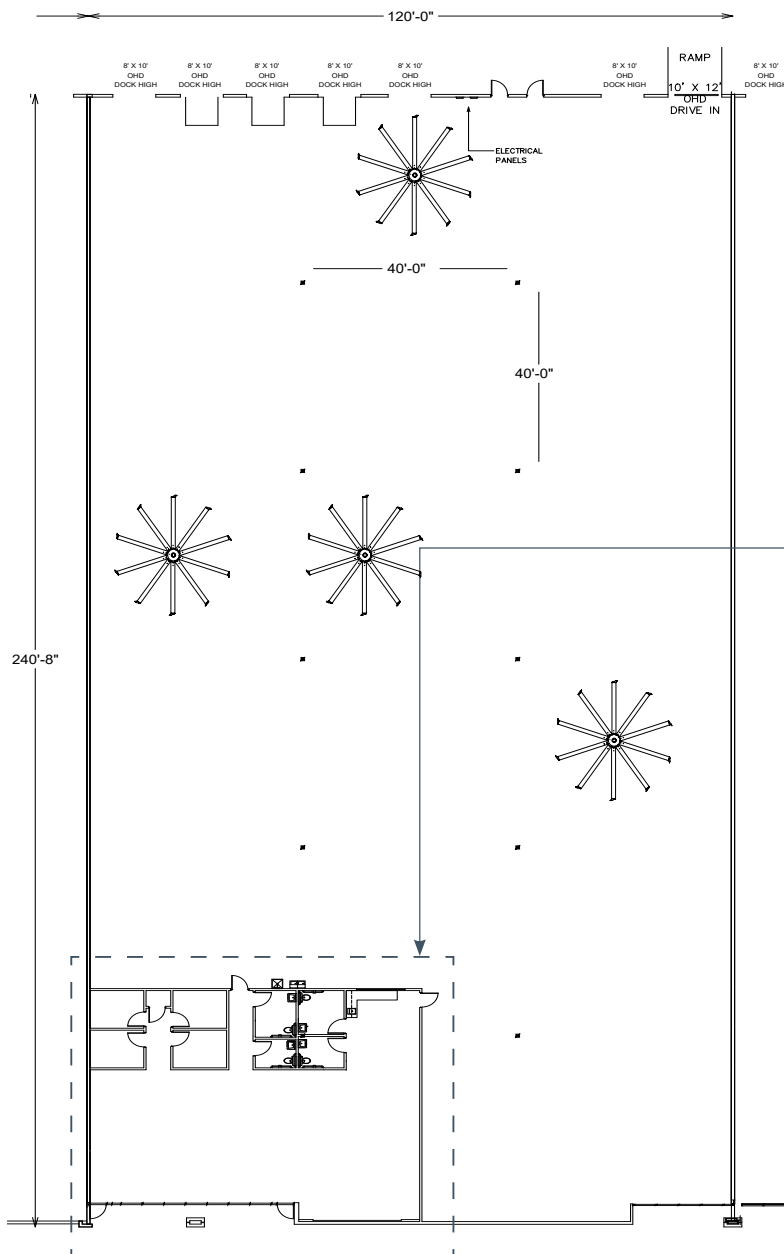
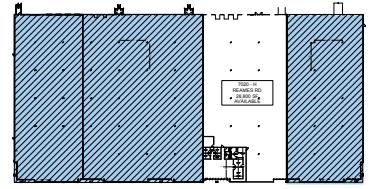
## LOCATION



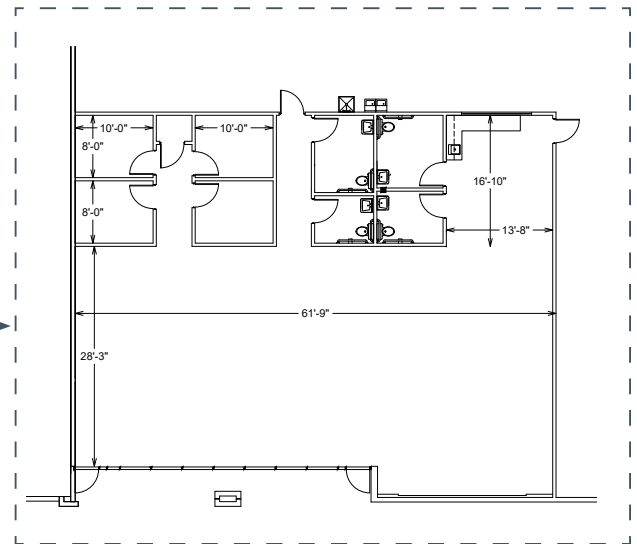
SPEC SUITE FOR LEASE

# 7020-H REAMES ROAD

NorthPark Business Park | 7020 Reames Road | Charlotte, NC 28216



## ENLARGED OFFICE SPACE



## FEATURES - Suite H

- 28,800 SF total
- 3,382 SF office
- Six (6) 8' x 10' dock high doors, three (3) with pit levelers
- One (1) 10' x 12' drive in door
- 24' clear height