



For Lease

RIPCO
RETAIL LEASING

Westhampton, NY

68-100 Old Riverhead Road Suffolk County
North Mall Long Island

| 800 SF - 1,350 SF

Newly renovated center on Old Riverhead Road

Contact
Exclusive Agents

Brian Von Schmid
bschmid@ripcony.com | 516.933.8880

Site Details



Size	800 SF 950 SF 1,100 SF 1,350 SF
Co-Tenants	Tonino's Pizza, Edible Arrangements, Uncle Louie G's Ices & Sherwin Williams
Neighbors	Francis S. Gabreski Airport, Westhampton Beach High School, TD Bank, Lidl, Walgreens, 7-11, Hampton Coffee Company
Comments	Newly renovated center - Facade - Landscaping - Lighting Close proximity to Gabreski Airport and Westhampton LIRR Station. Less than one mile from the Hamptons Business District featuring the East End's first and only Class A Business Park. High Income Area. Average Household Income of \$170,521 within 3 miles. 14,290 vehicles per day on Old Riverhead Road.

Footer contact signatures

1. Copy appropriate group from this page
2. Double click on footer to enter the editor and delete the current contents
3. Paste the group from you clipboard, and then set coordinates:

X: 1.375 IN

Y: 7.625 IN

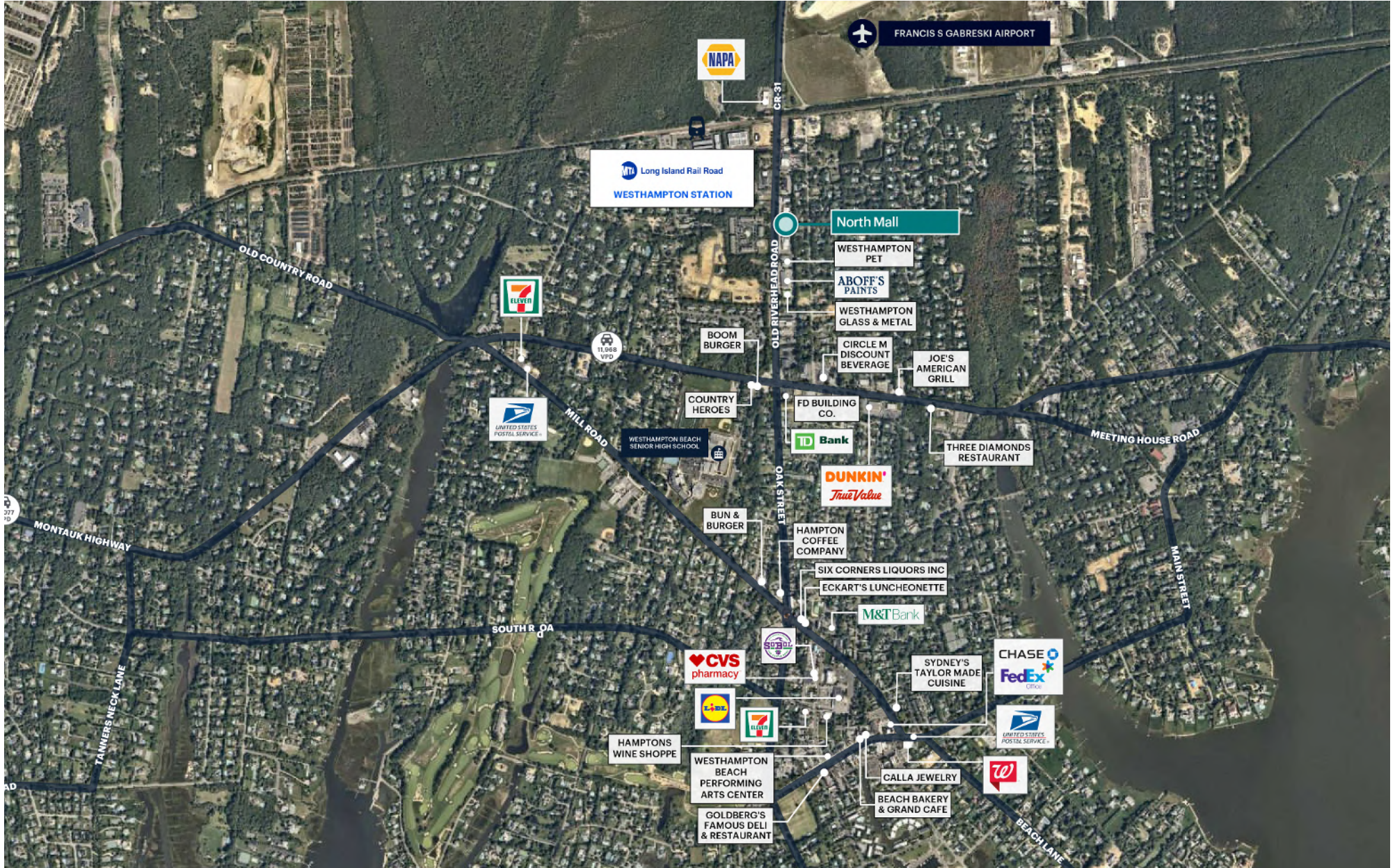
4. Ungroup the object [Shift] + [CMD] + [G]
5. Delete the Seafoam bounding box
6. Set appropriate broker contacts utilizing Smart Fields by double clicking the contact text box

Important

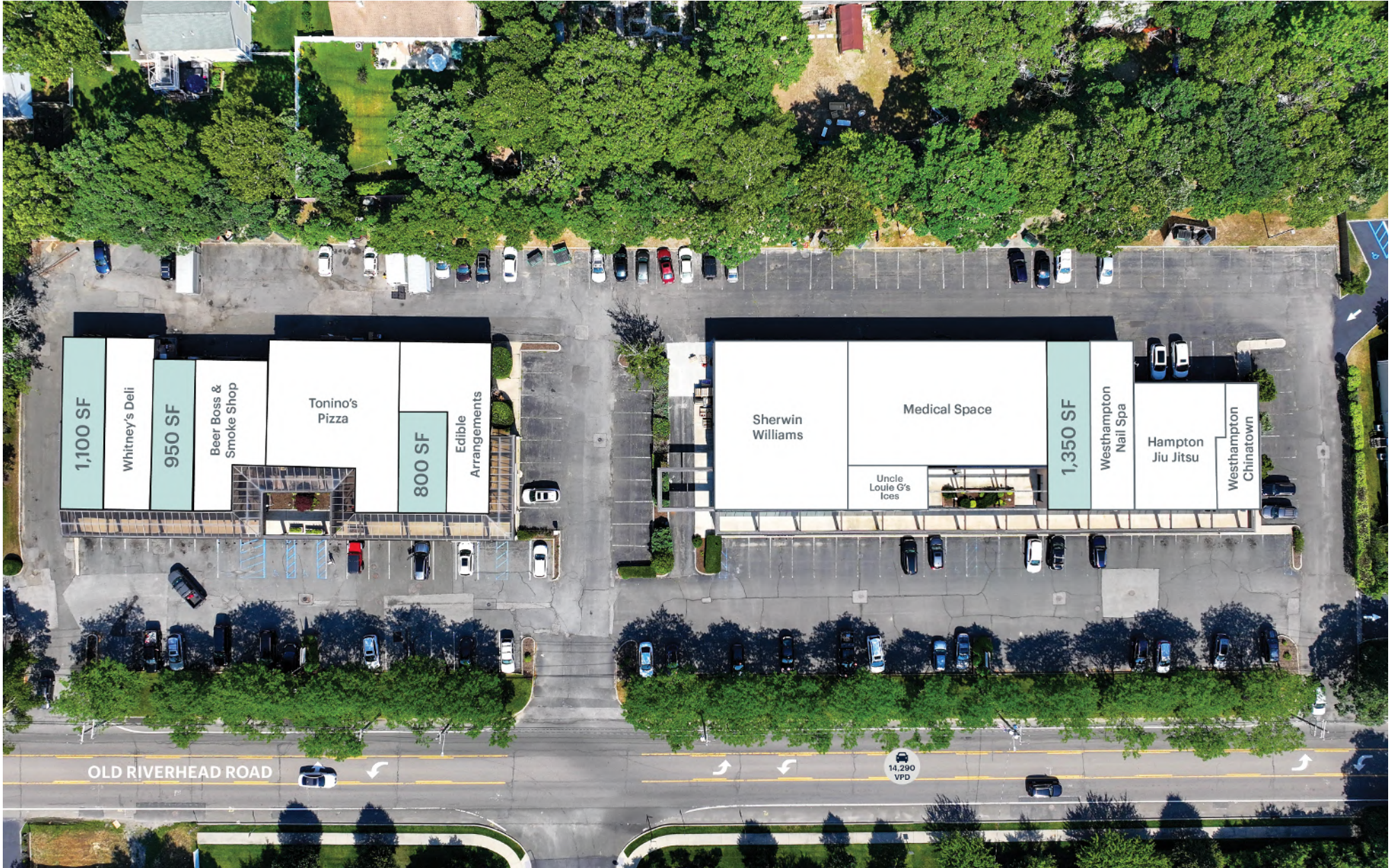
If using the four or more broker contact footer, ensure to include a page with the disclaimer within the package. Every package must include this disclaimer and an office address on at least one page.

<p>Contact Exclusive Agent</p>	<p>Name <u>Email</u> Phone Numbe...</p>				<p>Address WebURL Information is from sources deemed reliable, but the accuracy is not guaranteed. Square footage is approximate. Buyer must independently verify all information and assumes all risk for inaccuracies.</p>	
<p>Contact Exclusive Agents</p>	<p>Name <u>Email</u> Phone Numbe...</p>	<p>Name <u>Email</u> Phone Numbe...</p>			<p>Address WebURL Information is from sources deemed reliable, but the accuracy is not guaranteed. Square footage is approximate. Buyer must independently verify all information and assumes all risk for inaccuracies.</p>	
<p>Contact Exclusive Agents</p>	<p>Name <u>Email</u> Phone Numbe...</p>	<p>Name <u>Email</u> Phone Numbe...</p>	<p>Name <u>Email</u> Phone Numbe...</p>			<p>Address WebURL Information is from sources deemed reliable, but the accuracy is not guaranteed. Square footage is approximate. Buyer must independently verify all information and assumes all risk for inaccuracies.</p>
<p>Contact Exclusive Agents</p>	<p>Name <u>Email</u> Phone Numbe...</p>	<p>Name <u>Email</u> Phone Numbe...</p>	<p>Name <u>Email</u> Phone Numbe...</p>	<p>Name <u>Email</u> Phone Numbe...</p>	<p>Name <u>Email</u> Phone Numbe...</p>	

Area Retail



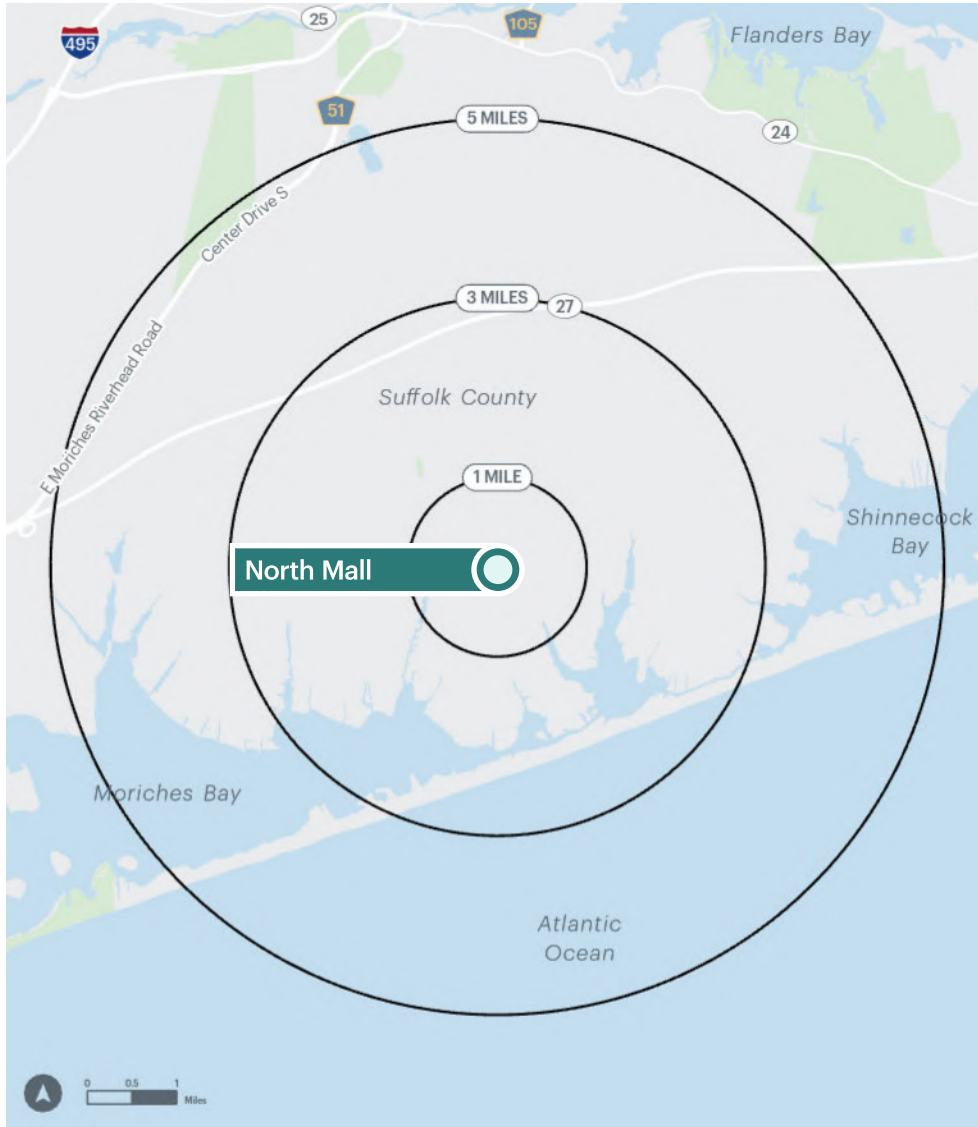
Site Plans



Photos



Area Demographics



456 Maple Avenue, NY

	1 mile	3 miles	5 miles
Population	8,633	59,754	120,136
Total Households	8,633	59,754	120,136
Average Household Income	\$8,633	\$59,754	\$120,136
Median Household Income	\$8,633	\$59,754	\$120,136
% Population with Bachelors +	1.48%	0.97%	0.83%
Daytime Population	8,633	59,754	120,136
Total Daytime Employees	8,633	59,754	120,136
Total Businesses	8,633	59,754	120,136