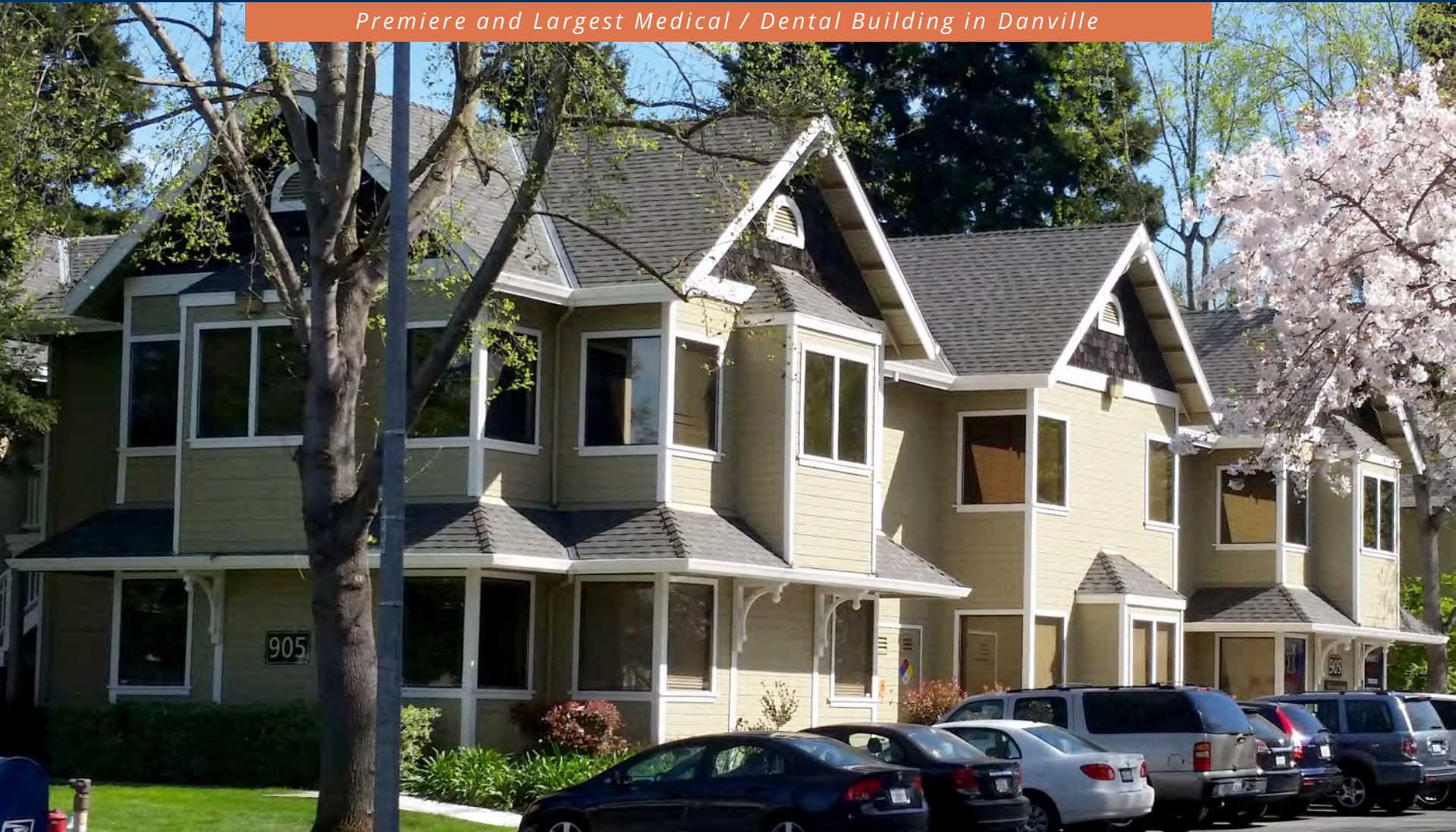


BAYSIDE REALTY PARTNERS PRESENTS

The Victorian Medical Center

901-919 San Ramon Valley Boulevard, Danville

Premiere and Largest Medical / Dental Building in Danville



TRASK LEONARD
President and CEO
650.533.2591
tleonard@baysiderp.com
DRE#01152101



CAROLINE DOYLE
Senior Vice President
650.722.1495
cdoyle@baysiderp.com
DRE#01906397

BAYSIDE
REALTY PARTNERS
MEDICAL/DENTAL PROPERTY SPECIALISTS

The Victorian Medical Center

901-919 San Ramon Valley Boulevard, Danville

LOCATION

- Medical/dental property with spaces ranging from 1,000 sf – 3,000 sf
- Health system tenants including PAMF and John Muir Health
- Professional office use allowed
- High-income area
- Easy access to I-680 / Sycamore Valley Road Exit

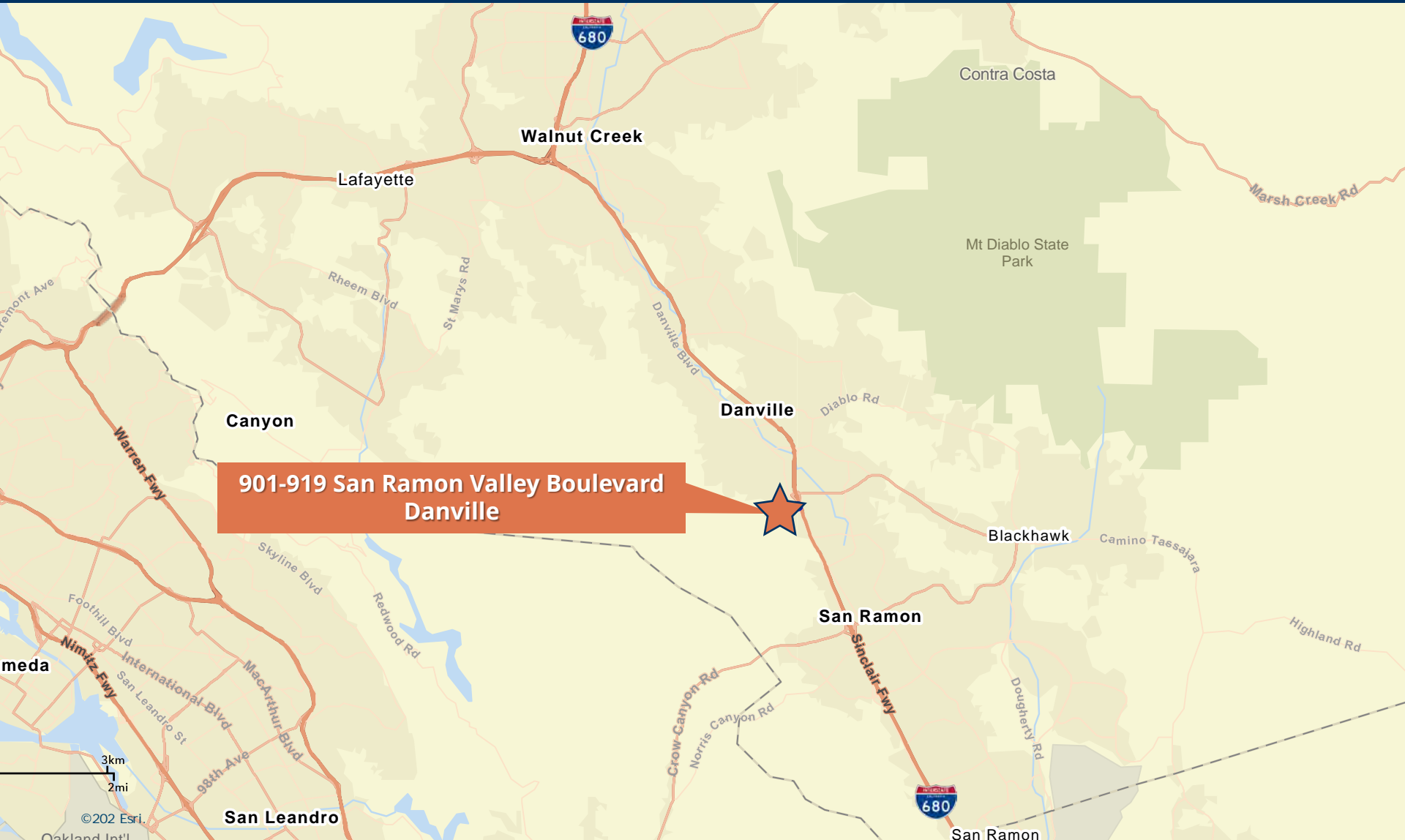


BUILDING

- Attractive 2-story elevator-served medical office buildings
- On-site pharmacy and labs
- Major renovations completed, including landscaping, signage/building identity, paint and ADA access
- Local ownership and hands-on management

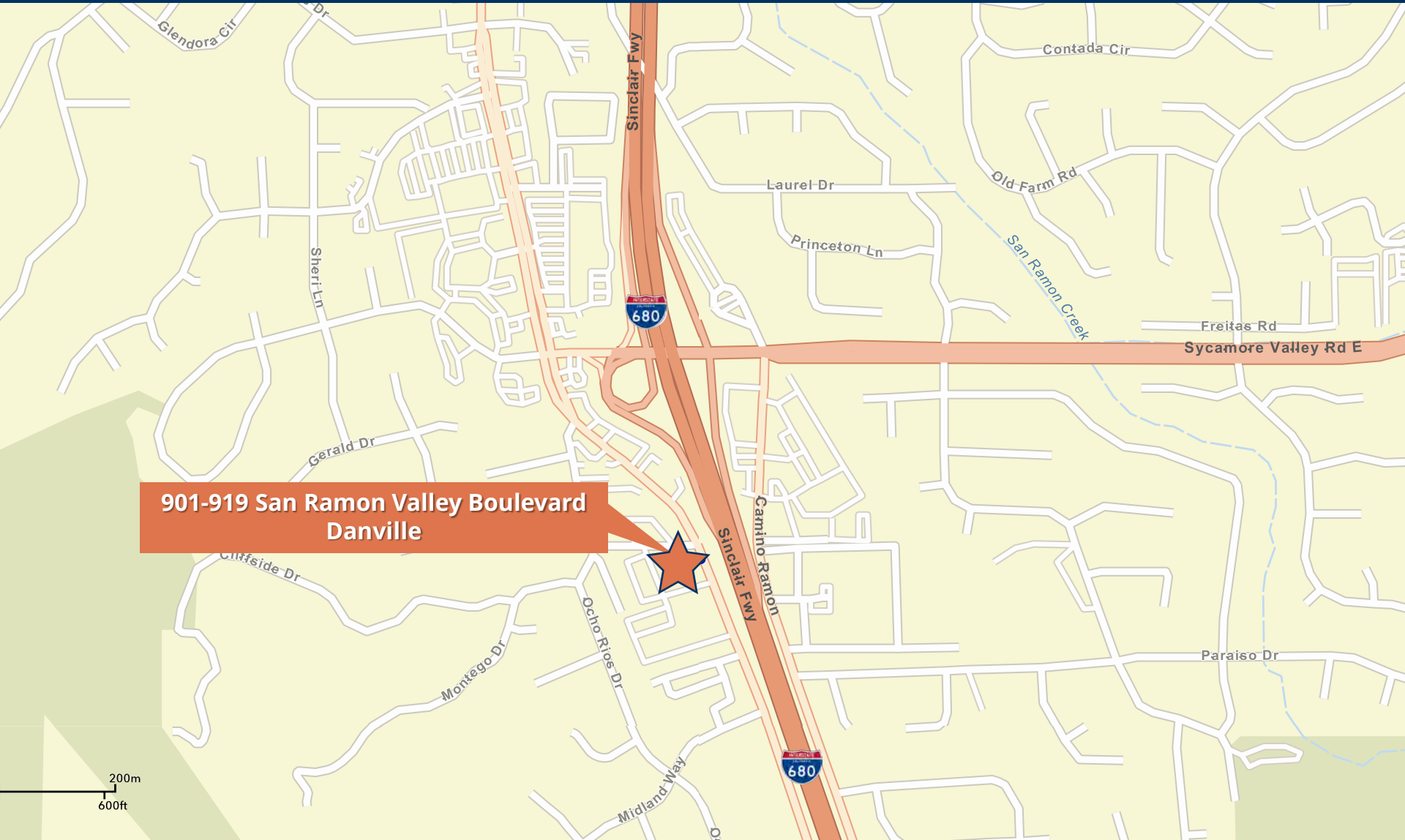
The Victorian Medical Center

901-919 San Ramon Valley Boulevard, Danville



The Victorian Medical Center

901-919 San Ramon Valley Boulevard, Danville

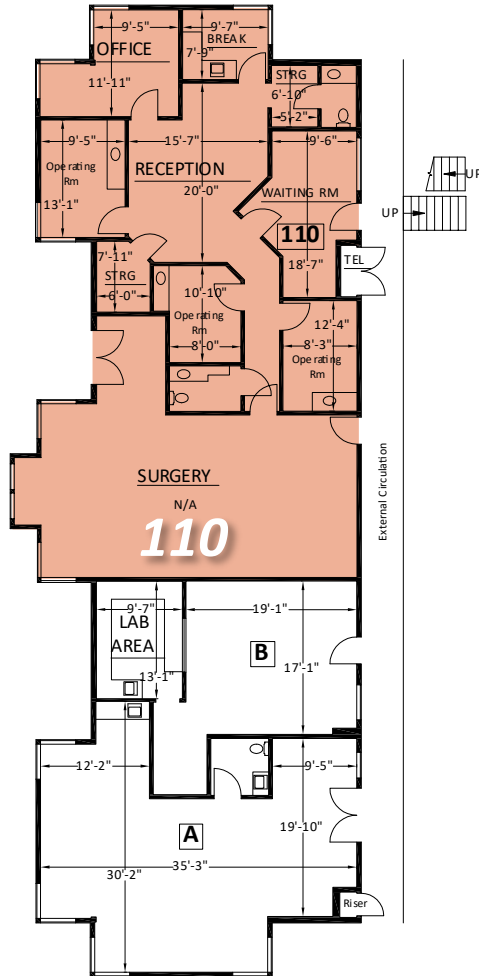


**901-919 San Ramon Valley Boulevard
Danville**

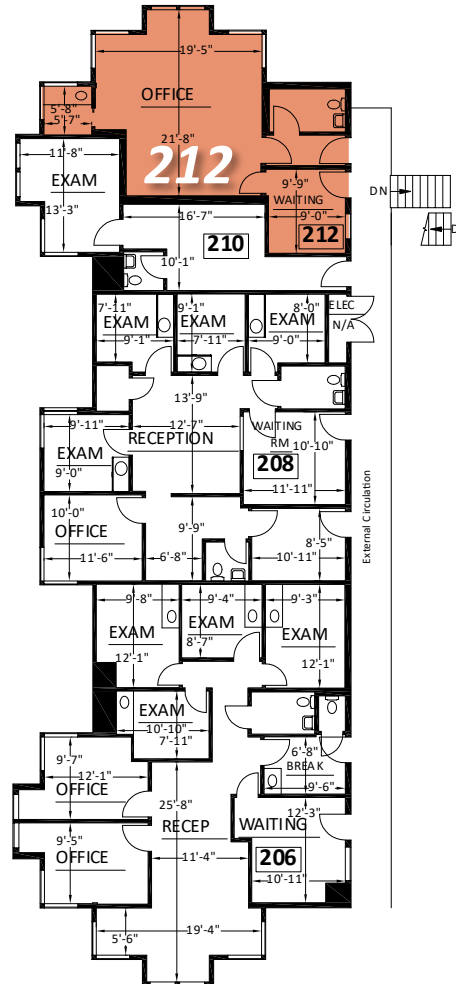
The Victorian Medical Center

901-919 San Ramon Valley Boulevard, Danville

**Building 905
FIRST FLOOR**



**Building 905
SECOND FLOOR**



Building 905

Suite 905-110 2,313 RSF

Surgical center. Waiting room, reception room, 3 restrooms, operating rooms, lab area, storage, breakroom, private office.

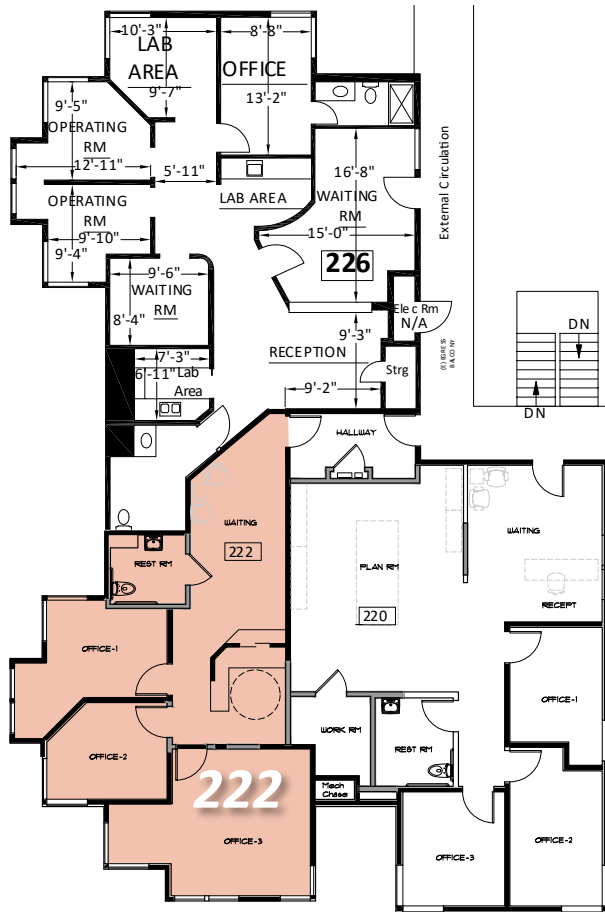
Suite 905-212 682 RSF

Private therapy suite/professional office. Waiting area, large open office, restroom, 2 entrances and small break area.

The Victorian Medical Center

901-919 San Ramon Valley Boulevard, Danville

Building 903
SECOND FLOOR



Building 903

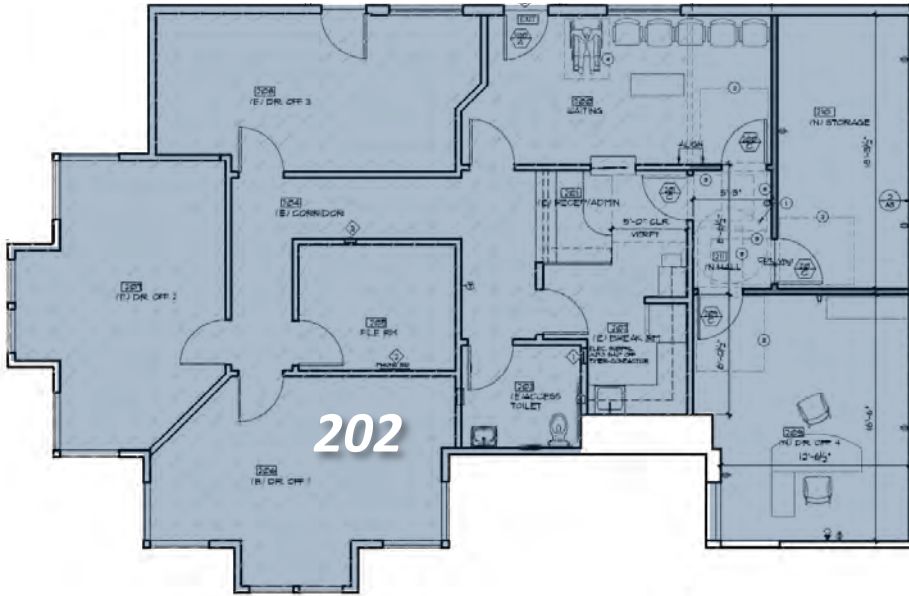
Suite 903-222 1,054 RSF

Waiting room/reception, 3 private offices,
internal restroom

The Victorian Medical Center

901-919 San Ramon Valley Boulevard, Danville

Building 907 SECOND FLOOR



Building 907

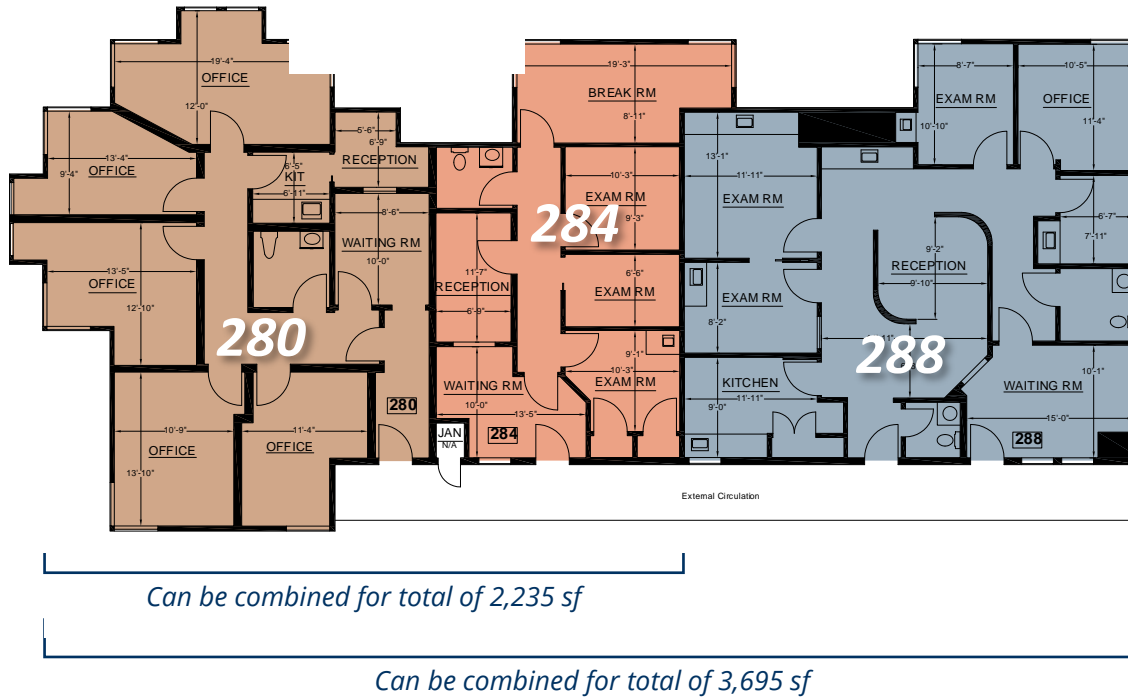
Suite 907-202 2,004 RSF

Waiting room/reception, 5 private large offices, storage, internal restroom. Former use as private/professional office. Private/secondary exit.

The Victorian Medical Center

901-919 San Ramon Valley Boulevard, Danville

Building 913
SECOND FLOOR



Building 913

Suite 913-280 1,392 RSF

Waiting room/reception, 5 offices, kitchen, internal restroom. *Can be combined with 913-284 for total of 2,235 sf*

Suite 913-284 843 RSF

Waiting room/reception, 3 offices, breakroom, internal restroom. *Can be combined with 913-280 for total of 2,235 sf*

Suite 913-288 1,460 RSF

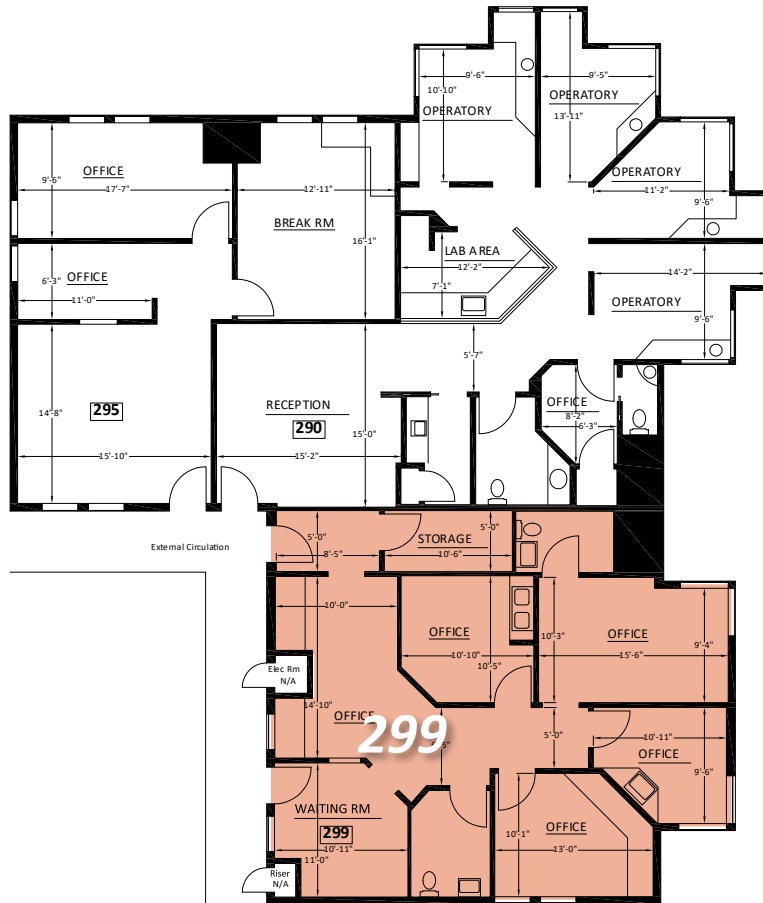
Waiting room/reception, 3-4 exam rooms, office, kitchen, 2 restrooms. *Can be combined with 913-284 for total of 2,303 sf*

FULL FLOOR 3,695 RSF

The Victorian Medical Center

901-919 San Ramon Valley Boulevard, Danville

Building 917
SECOND FLOOR



Building 917

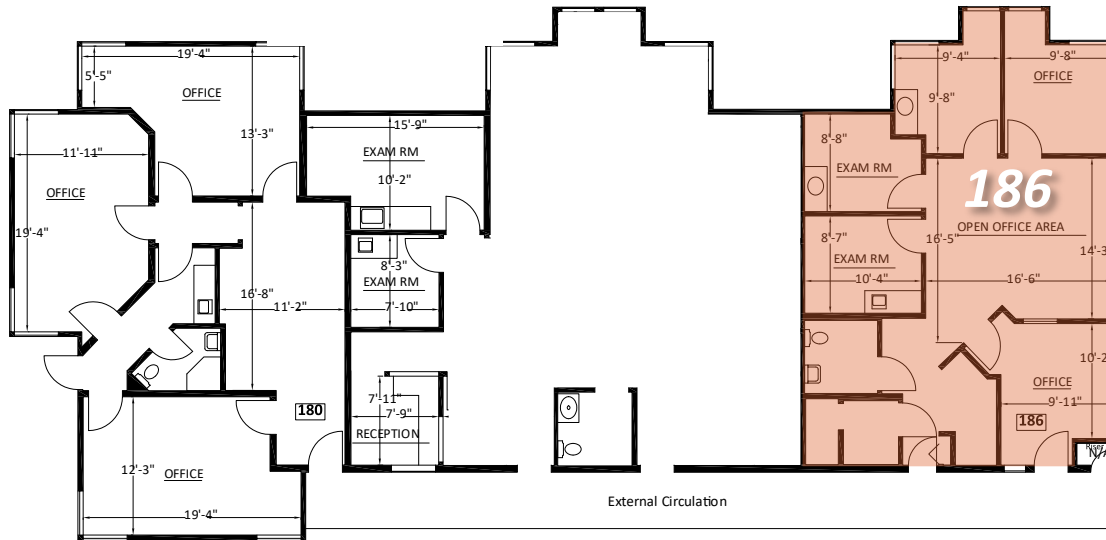
Suite 917-299 1,161 RSF

Waiting room/reception, 4 private offices, large open space, storage, 2 internal restrooms. Private/secondary exit.

The Victorian Medical Center

901-919 San Ramon Valley Boulevard, Danville

Building 913
FIRST FLOOR



Building 913

Suite 913-186 1,075 RSF

Waiting room/reception, 3 exam rooms, 1 office, internal restroom. Private/secondary exit.

Meet Your Expert Team



TRASK LEONARD

President and CEO

650.533.2591

tleonard@baysiderp.com

DRE#01152101



CAROLINE DOYLE

Senior Vice President

650.722.1495

cdoyle@baysiderp.com

DRE#01906397

BAYSIDE REALTY PARTNERS

The preeminent provider of management, leasing, construction management and accounting services for healthcare properties.



MARKET LEADER

- Leasing & Property Management
- Investment Sales
- Tenant Representation
- Construction Management
- Property Repositioning



INFLUENTIAL NETWORK

- Institutional Investors
- Healthcare Systems and Healthcare Districts
- Physicians & Districts
- Private Investors



DOMINANT FOOTPRINT

- 2 million SF leased & managed
 - 50+ MOB portfolio
 - 10,000-240,000 SF
 - 500,000 SF portfolio
- San Francisco's largest MOBs
- 950+ leases executed
- 500+ medical and dental tenants

DOMINANT. EXPERT. INFLUENTIAL.