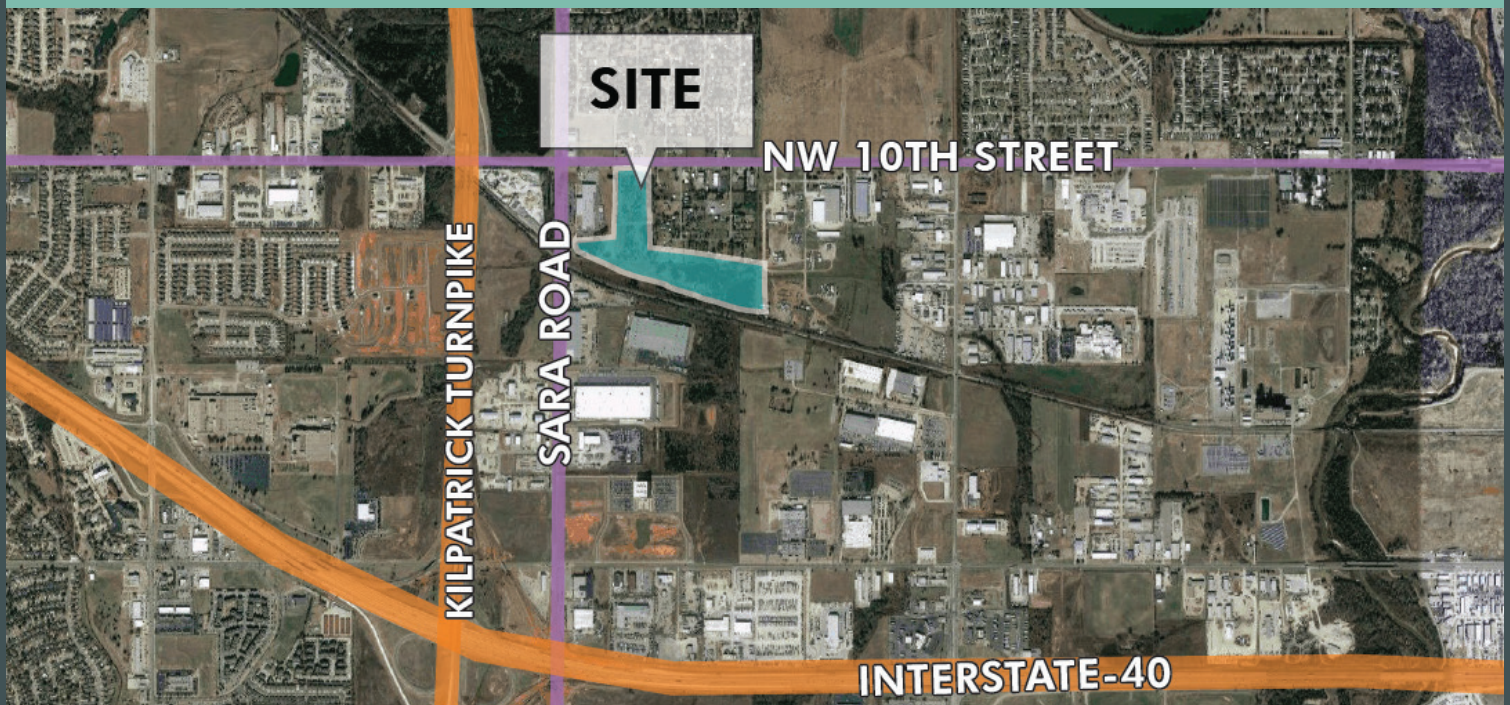


NW 10th & Sara Road

Oklahoma City, Oklahoma 73127

Owner will build to suit for qualified tenant

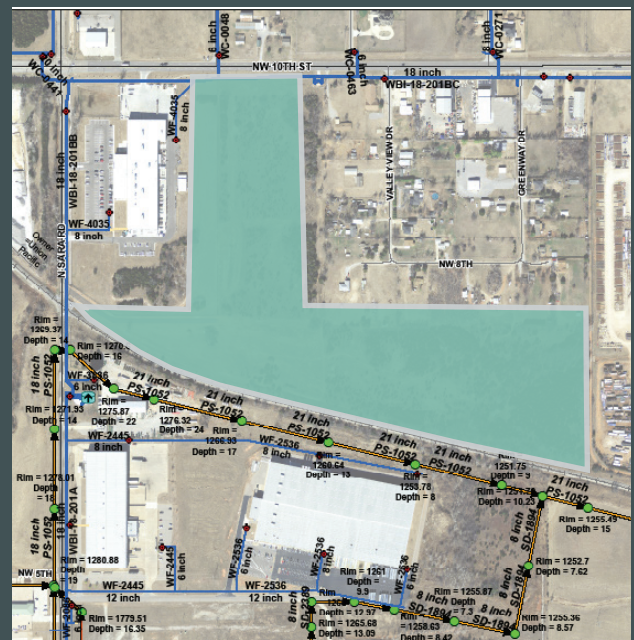


HIGHLIGHTS

This site is located in West Oklahoma City's prominent industrial corridor. 38.53± acres of raw land situated 1/4 mile from Kilpatrick Turnpike entrance with I-2 Zoning and rail access.

- + Sale Price: \$5,873,865
- + \$3.50 PSF
- + Land Size: 38.53± AC
- + Development Ready; Utilities on site
- + Water to the North End; Sewer to the South End

UTILITY MAP





Contact Us

Randy Lacey, SIOR
Senior Vice President
+1 405 607 6062
randy.lacey@cbre.com

Chris Zach, CPA
Vice President
+1 405 607 6313
chris.zach@cbre.com

© 2025 CBRE, Inc. All rights reserved. This information has been obtained from sources believed reliable, but has not been verified for accuracy or completeness. You should conduct a careful, independent investigation of the property and verify all information. Any reliance on this information is solely at your own risk. CBRE and the CBRE logo are service marks of CBRE, Inc. All other marks displayed on this document are the property of their respective owners, and the use of such logos does not imply any affiliation with or endorsement of CBRE. Photos herein are the property of their respective owners. Use of these images without the express written consent of the owner is prohibited.