

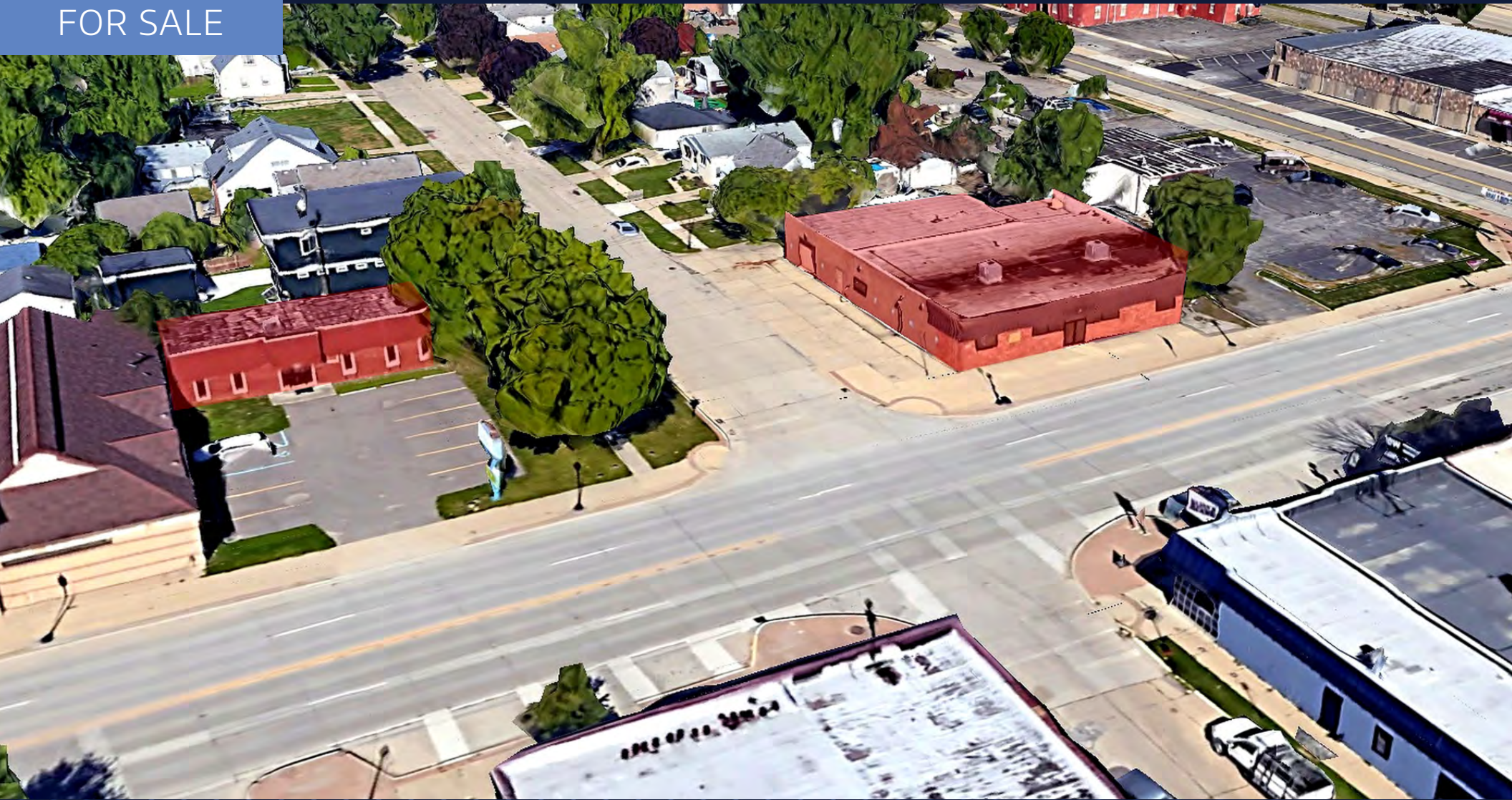
2 PROPERTY PORTFOLIO

24911 & 24831 JOHN R RD, HAZEL PARK, MI 48030



KEYSTONE
COMMERCIAL REAL ESTATE

FOR SALE



KATHLEEN GARMO

kgarmo@keystonecres.com

www.Keystonecres.com | 248.356.8000



2 PROPERTY PORTFOLIO



OFFERING SUMMARY

Sale Price:	\$700,000
Left Building:	1,500 SF
right Building:	6,733 SF
Total SF:	8,233 SF
Zoning:	LB

LOCATION DESCRIPTION

24911 and 24831 John R Road are prominently located along a high-traffic retail corridor in Hazel Park, with strong visibility and direct access to I-75 and I-696.

The sites benefit from steady consumer traffic, nearby national and local retailers, and a dense surrounding population. Positioned near major employment centers like Royal Oak, Troy, and downtown Detroit, the properties are well-situated to capture both local and commuter-driven demand.

2 PROPERTY PORTFOLIO



2 PROPERTY PORTFOLIO

1,500 SF BUILDING

- 0.18 Acres
- Flexible use: office, fitness, medical, or retail
- Pylon signage
- Ample front parking for customers and staff



24831 JOHN R ROAD

This 1,500 SF building offers flexible potential for office, fitness, medical, or retail use.

The property provides excellent visibility along John R Road with plenty of convenient front parking, making it an ideal opportunity for a wide range of users.



2 PROPERTY PORTFOLIO



6,733 SF BUILDING

- 0.25 Acres
- Office space in front and warehouse/storage in rear
- 8x10 grade level door in rear
- Executive offices available with full bathroom and shower
- Full office kitchen available with fountain soda machine, oven, fridge and stove



24911 JOHN R ROAD

This office/flex property offers 6,733 SF, including office space in the front and warehouse/storage in rear, making it ideal for a variety of business needs.

With 12' clear height, one 8x10 grade-level door, 18 dedicated parking spaces (additional parking available), the site provides excellent functionality, convenience, and accessibility for office or flex users.



2 PROPERTY PORTFOLIO



2 PROPERTY PORTFOLIO

POPULATION

	1 MILE	3 MILES	5 MILES
Total Population	15,468	131,899	357,136
Average Age	39.3	39.4	39.1
Average Age (Male)	38.2	38.7	37.4
Average Age (Female)	40.2	40.5	41.1

HOUSEHOLDS & INCOME

	1 MILE	3 MILES	5 MILES
Total Households	7,726	60,533	154,305
# of Persons per HH	2.0	2.2	2.3
Average HH Income	\$85,443	\$97,809	\$88,530
Average House Value	\$186,585	\$231,616	\$217,070

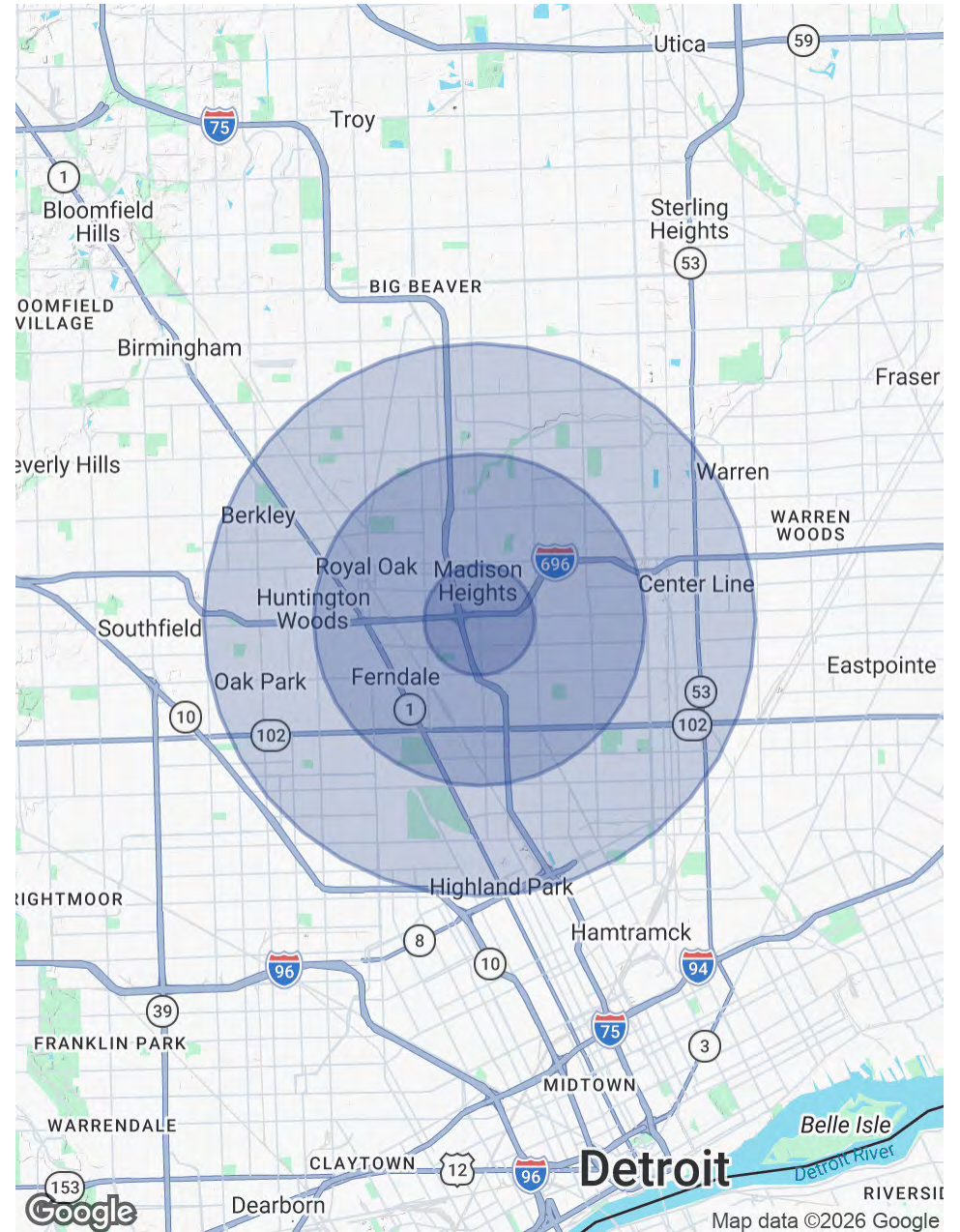
RACE

	1 MILE	3 MILES	5 MILES
Total Population - White	12,668	90,540	183,396
Total Population - Black	840	20,388	127,773
Total Population - Asian	272	10,625	22,074
Total Population - Hawaiian	14	41	90
Total Population - American Indian	42	629	1,192
Total Population - Other	547	2,111	5,008

TRAFFIC COUNTS

John R Road	11,658 VPD
E 10 Mile Road	5,707 VPD
I-696	201,553 VPD
I-75	173,735 VPD

2023 American Community Survey (ACS)





2 PROPERTY PORTFOLIO

24911 JOHN R ROAD, HAZEL PARK, MI 48030

For more information contact listing broker:



KATHLEEN GARMO

Senior Advisor
248.406.1761
kgarmo@keystonecres.com

Commercial Real Estate: Redefined Around You

OUR COMMITMENT

Keystone Commercial Real Estate redefines your real estate journey through deep industry expertise and a client-first philosophy. Leveraging innovative strategies and proven experience in both local and national markets, we act as your trusted commercial real estate experts. From maximizing investment returns to crafting impactful marketing campaigns, our team is dedicated to your success.