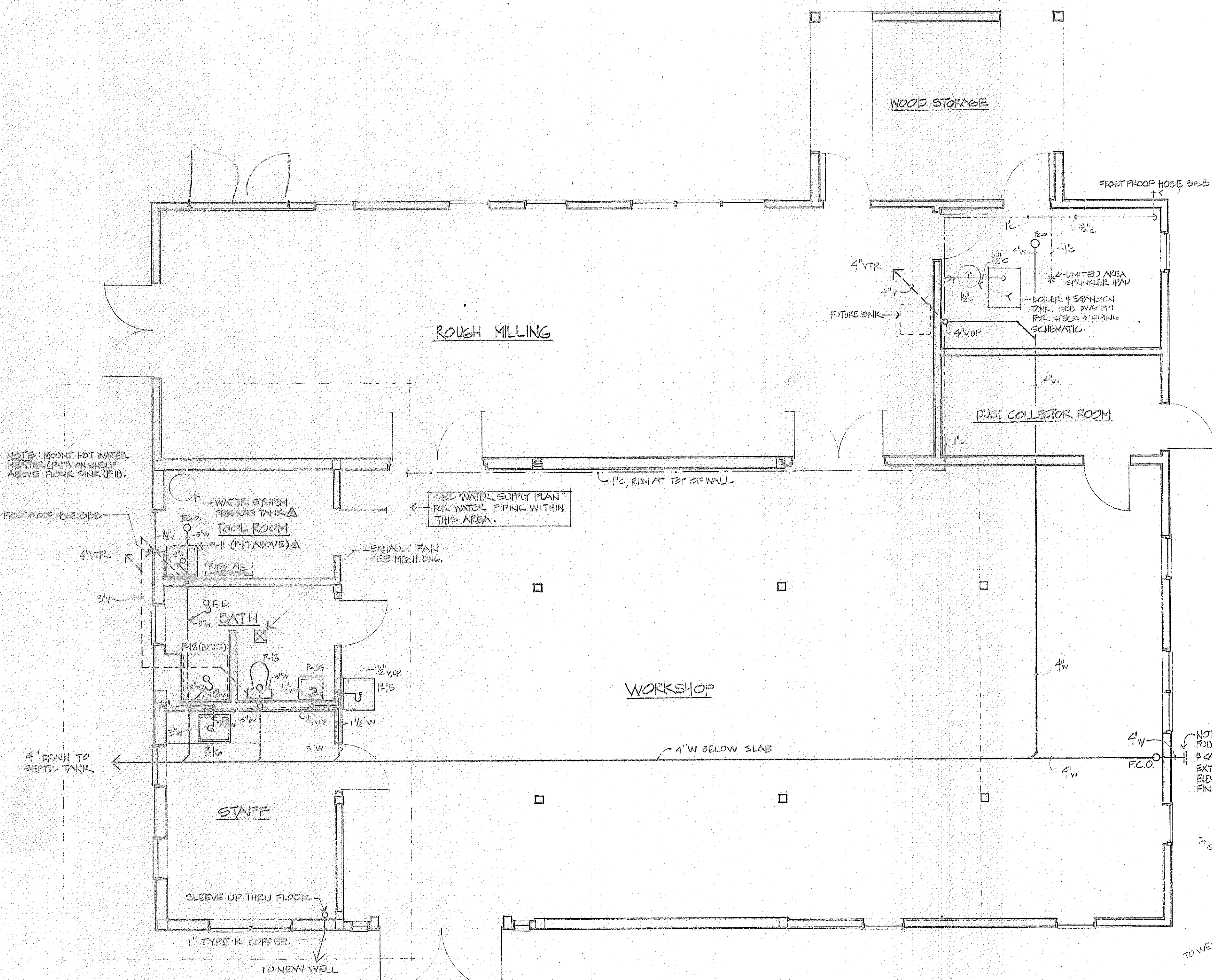


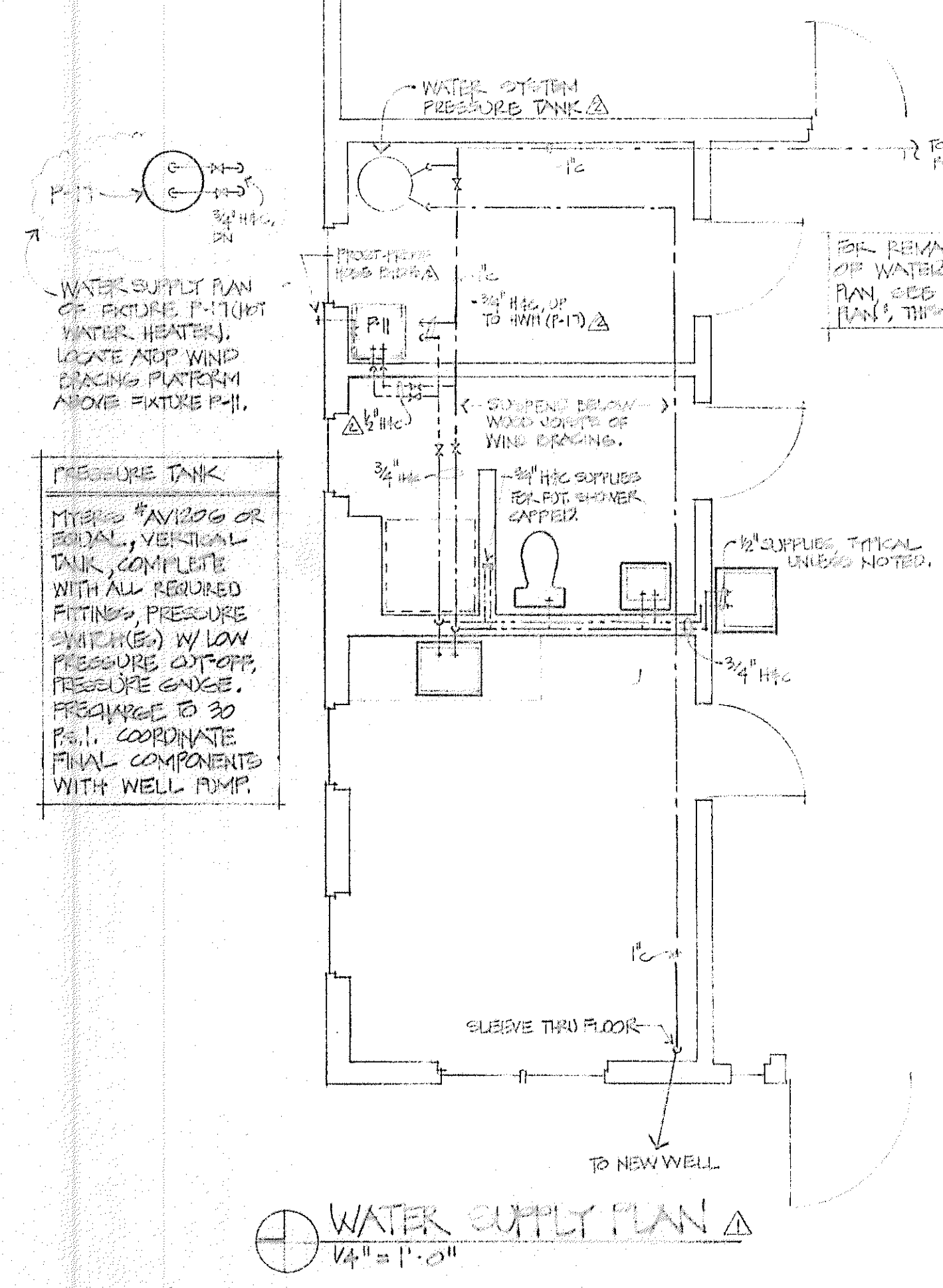
MARK	ITEM	MANUF.	MODEL #	ACCESSORIES	REMARKS
P-11	FLOOR SINK	FLORSTONE	MER-2424	#MR-511 PEXET	
P-12	MT SHOWER	BT OWNER			
P-13	TOILET	AM. STANDARD	2104.2260		
P-14	LAVATORY	AM. STANDARD	0321.020	MOEN #4120A (PAXET)	
P-15	SINK	FLORSTONE	WM	MOEN #4115 (PAXET)	
P-16	SINK	BURKAT	PUR-2522 4	MOEN #7051-A (PAXET)	1/2" HOLE RING 9" x 2", 1/2" PEXET 4
P-17	HOT WATER HTR.	RIBEM	615V-200	A-1000 TFP VALVE	

NOTES: 1) ALL FIXTURES TO BE WHITE UNLESS NOTED.
 2) ALL STOPS & COUPLES TO BE CHROME.
 3) FINISH 206A CHROME TUBE TRAYS FOR ALL SINKS & LAVS.
 4) INSULATE HOT WATER HEATER WITH 2" VINYL-FIBER INSULATION JACKET.
 5) ALL LAVATORY & SINK PAXETS TO BE BRIPPED WITH 2.5 GPM FLOW RESTRICTORS (2.75 GPM FOR SHOWERS).

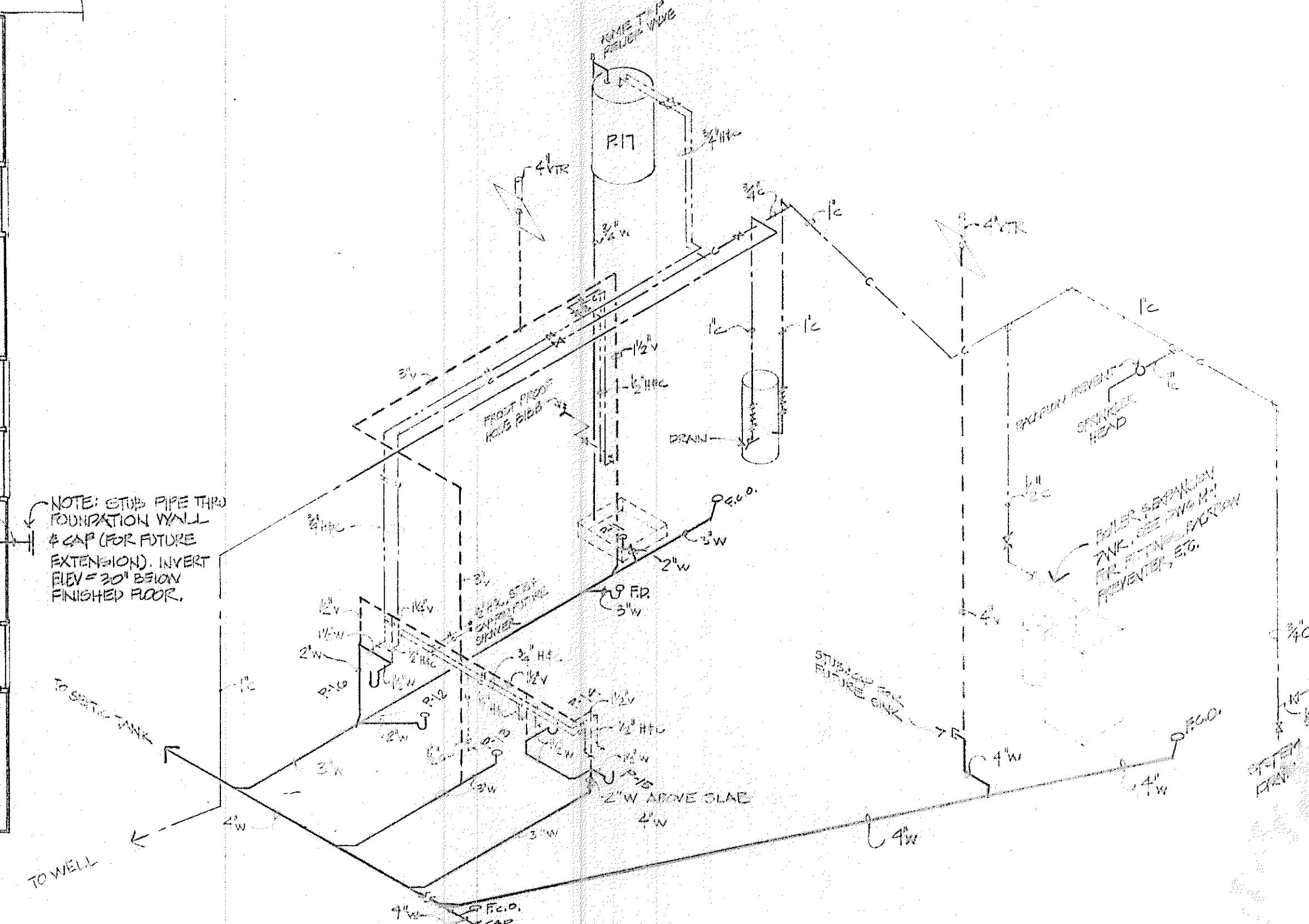


PLUMBING PLAN
 1/4" = 1'-0"
 NOTE: FOR WATER SUPPLY PIPING SEE RISEL DIAGRAM & WATER SUPPLY PLAN.

Reel



WATER SUPPLY PLAN
 1/4" = 1'-0"



WATER SUPPLY & WASTE PIPING RISER DIAGRAM
 N.T.S.

NORTHERN ARCHITECTS, inc
 BURLINGTON, VERMONT 05401
 115 COLLEGE STREET
 802-653-1953

OFFICE AND MANUFACTURING FACILITY FOR THE
 Vermont Sled Co.
 Monkton, Vermont

DATE NOV. 21, 1988
 SCALE AS SHOWN
 CHKD
 REVISIONS
 1) 12/15/88 CORRECTIONS APPLIED WATER SUPPLY PLAN, BY PER. AMBURY
 2) 1/15/89