

340 E. EDGEWOOD BLVD.  
LANSING, MICHIGAN

INDUSTRIAL FOR LEASE  
20,000 - 68,467 Square Feet Available



**SIGNATURE  
ASSOCIATES**  
KNOW SIGNATURE | KNOW RESULTS

**INDUSTRIAL OR COMMERCIAL/RETAIL**



## PROPERTY FEATURES

- 20,000 - 68,467 square feet available
- 2,000 square feet office
- 27' clear height
- (4) grade level doors, (8) truckwells
- Zoned Commercial
- Former Sam's Club being redeveloped for multiple tenants
- Can accommodate industrial or commercial/retail
- Can add additional truckwells and overhead doors
- 100% air-conditioned
- 3000 amps, 480 volts power
- 700 car parking
- Wide columns at 60' x 40'
- Quick access to I-96 via exit 104 at Cedar Street



For more information, please contact:

**JEFF LEMANSKI**  
(248) 359 0641  
jlemanski@signatureassociates.com

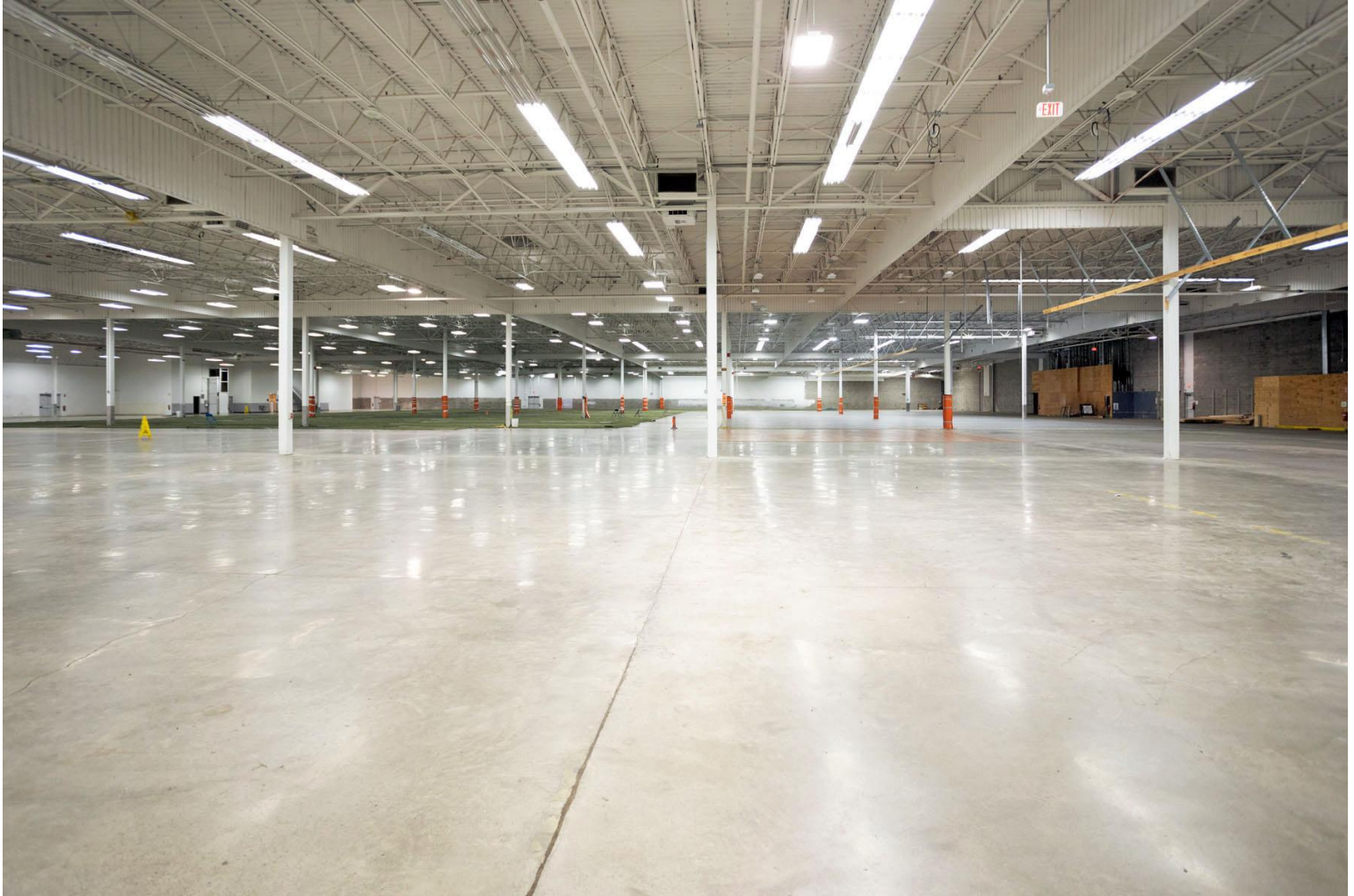
**SIGNATURE ASSOCIATES**  
One Towne Square, Suite 1200  
Southfield, MI 48076  
www.signatureassociates.com

# 340 E. Edgewood Blvd. – Lansing, Michigan

## Industrial For Lease

20,000 - 68,467  
Square Feet  
AVAILABLE

### Additional Photos



For more information, please contact:

**JEFF LEMANSKI**  
(248) 359 0641  
jlemanski@signatureassociates.com

**SIGNATURE ASSOCIATES**  
One Towne Square, Suite 1200  
Southfield, MI 48076  
www.signatureassociates.com

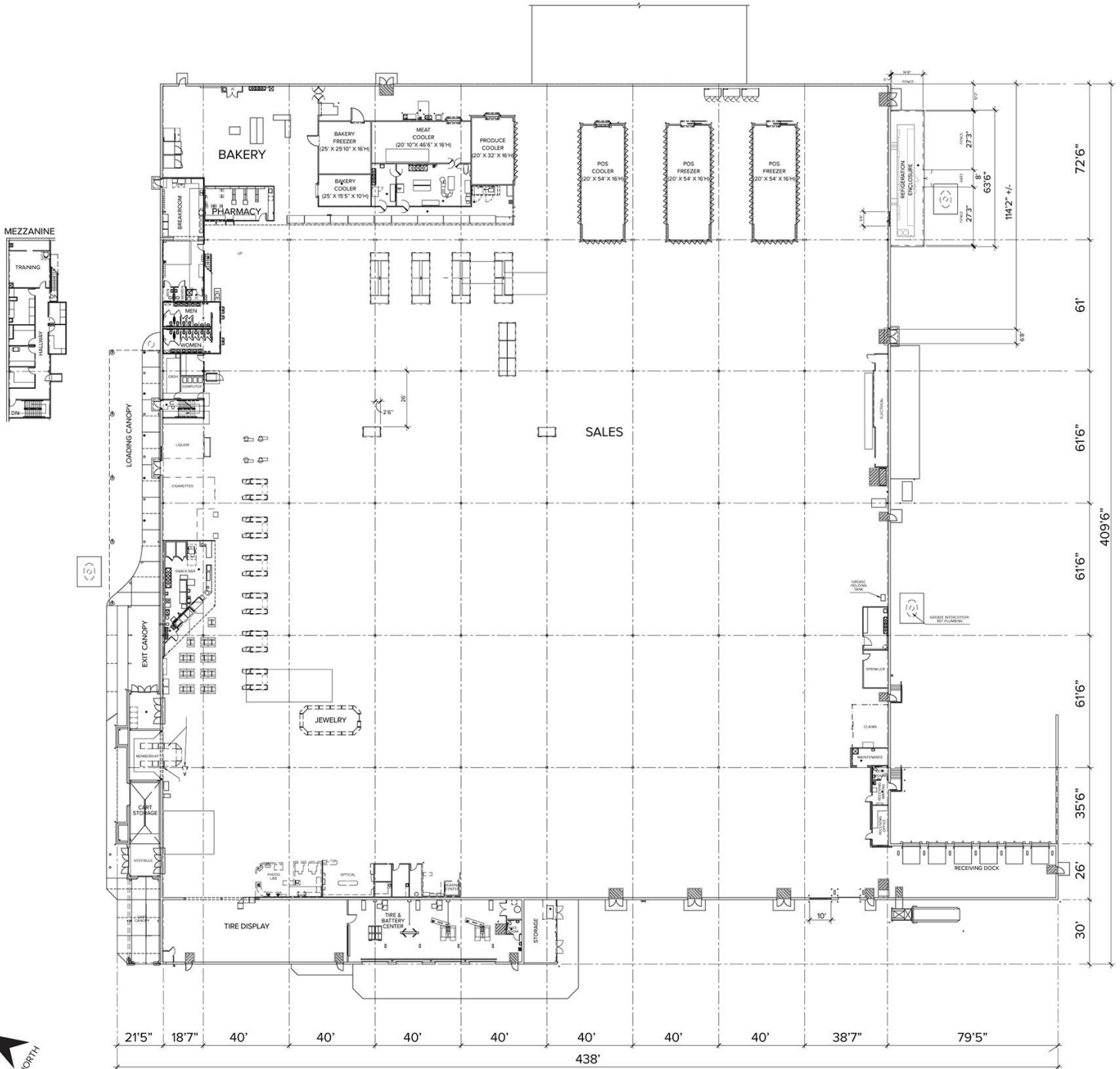


# 340 E. Edgewood Blvd. – Lansing, Michigan

## Industrial For Lease

20,000 - 68,467  
Square Feet  
AVAILABLE

### Floor Plan



For more information, please contact:  
**JEFF LEMANSKI**  
 (248) 359 0641  
 jlemanski@signatureassociates.com

**SIGNATURE ASSOCIATES**  
 One Towne Square, Suite 1200  
 Southfield, MI 48076  
 www.signatureassociates.com

Information is subject to verification and no liability for errors or omissions is assumed. Price is subject to change and listing withdrawal.

# 340 E. Edgewood Blvd. – Lansing, Michigan

## Industrial For Lease

20,000 - 68,467  
Square Feet  
AVAILABLE

Aerial



For more information, please contact:

**JEFF LEMANSKI**

(248) 359 0641

[jlemanski@signatureassociates.com](mailto:jlemanski@signatureassociates.com)

**SIGNATURE ASSOCIATES**  
One Towne Square, Suite 1200  
Southfield, MI 48076  
[www.signatureassociates.com](http://www.signatureassociates.com)