

FOR LEASE

138 LOGISTICS CENTER

160,170 SF REMAINING - DIVISIBLE TO 72,000 SF

DEVELOPED BY:

 CLARION PARTNERS

 PHELAN[™]
DEVELOPMENT



Kevin VandenBrink
503.972.7289
kevinv@macadamforbes.com
Licensed In OR

Greg Burpee
503.972.7282
burpee@macadamforbes.com
Licensed In OR

FOR LEASE

138 LOGISTICS CENTER

4840 NE 138TH AVENUE, PORTLAND, OR 97230

THE PROJECT

138 Logistics Center offers two state-of-the-art distribution warehouses totaling 489,700 SF on 25.56 acres in NE Airport Way, one of Portland's premier industrial gateways. The remaining space in Building A is divisible to 72,000 SF and is ready to occupy.

138 Logistics Center is constructed to LEED design standards, using the most up to date sustainability standards during construction and built to assist our tenants in working to reduce waste and offer the most efficient operating environment in the market.



FOR LEASE

138 LOGISTICS CENTER

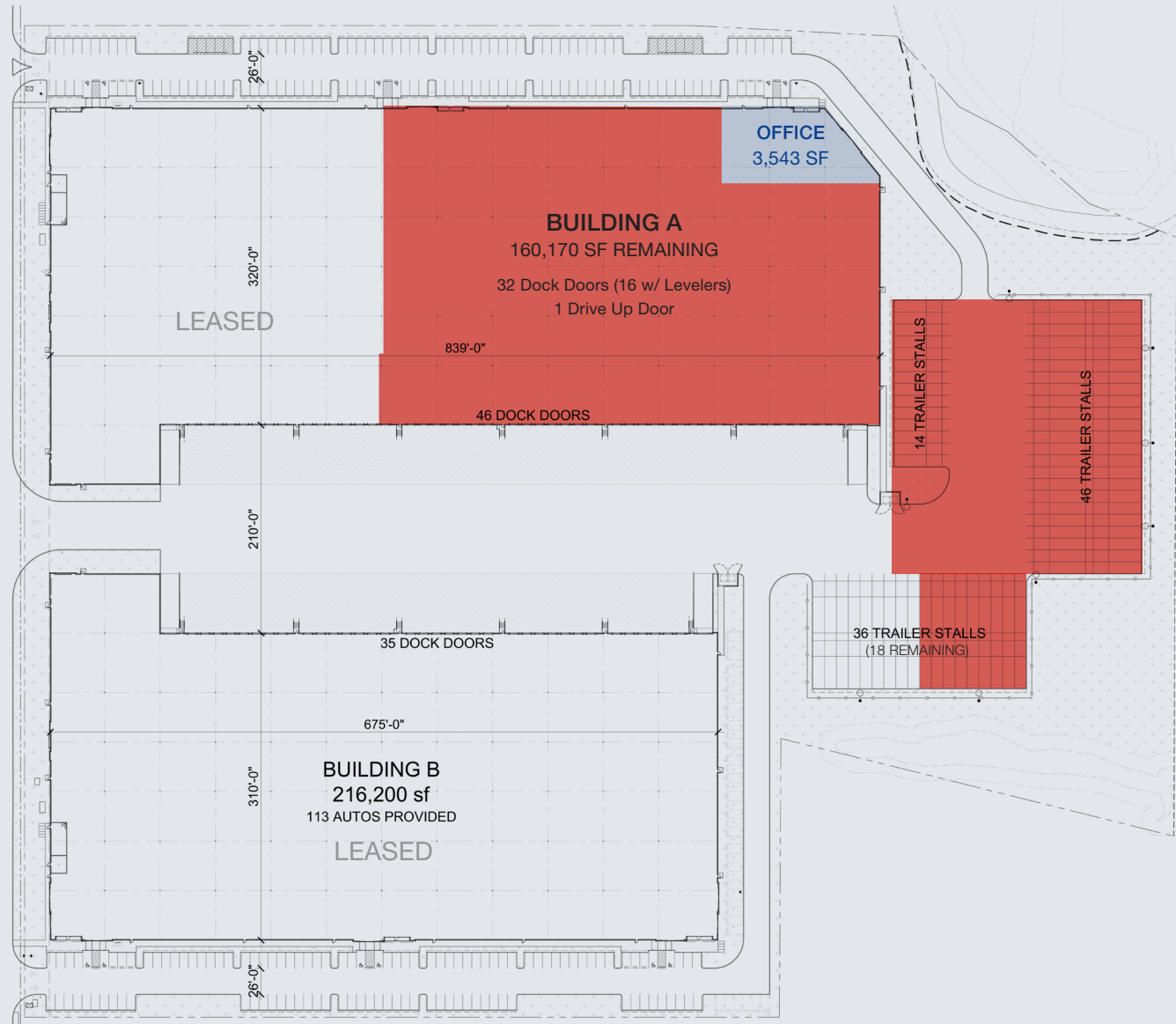
4840 NE 138TH AVENUE, PORTLAND, OR 97230

BUILDING A

Space Available	160,170 SF
	Divisible to Approx. 72,000 SF
Dock Doors:	32 (Including 16 Pit Levelers)
Grade Level Doors:	1
Clear Height:	36'
Column Spacing:	55' x 50'
Building Depth:	320'
Power:	1,700 amps
Sprinklers:	ESFR
Parking Spaces:	83
Trailer Stalls:	78 / Secure Yard Storage
Spec Office Space:	3,543 SF
Security Fencing:	Can be added upon request

OFFERING SUMMARY

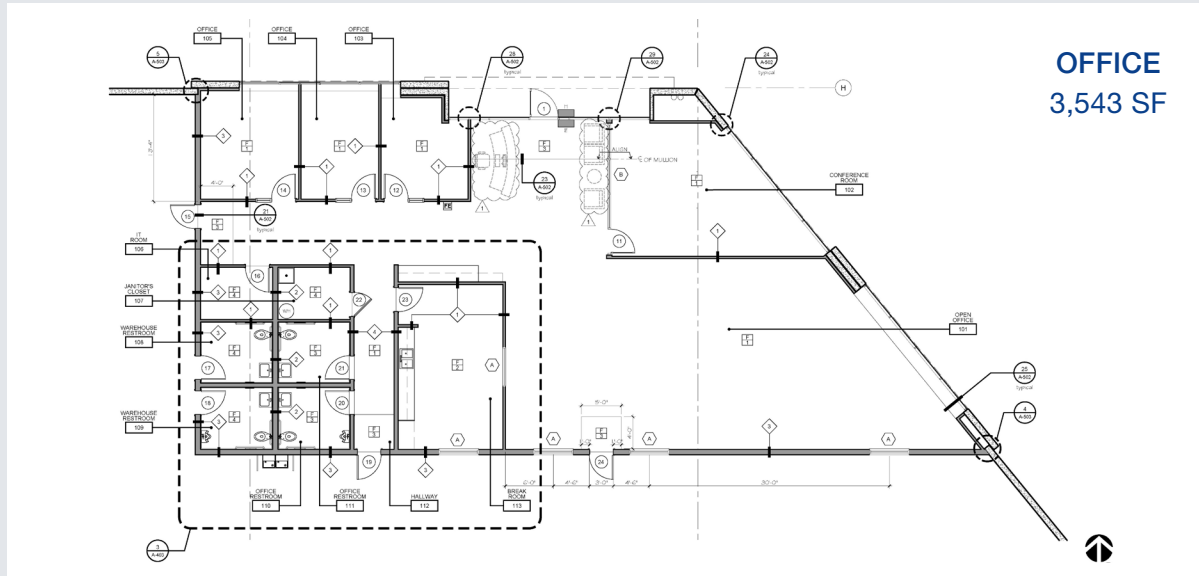
Asking Rate:	Call For Rates
NNN:	Call For Rates
Date Available:	Now



FOR LEASE

138 LOGISTICS CENTER

4840 NE 138TH AVENUE, PORTLAND, OR 97230



OFFICE
3,543 SF



FOR LEASE

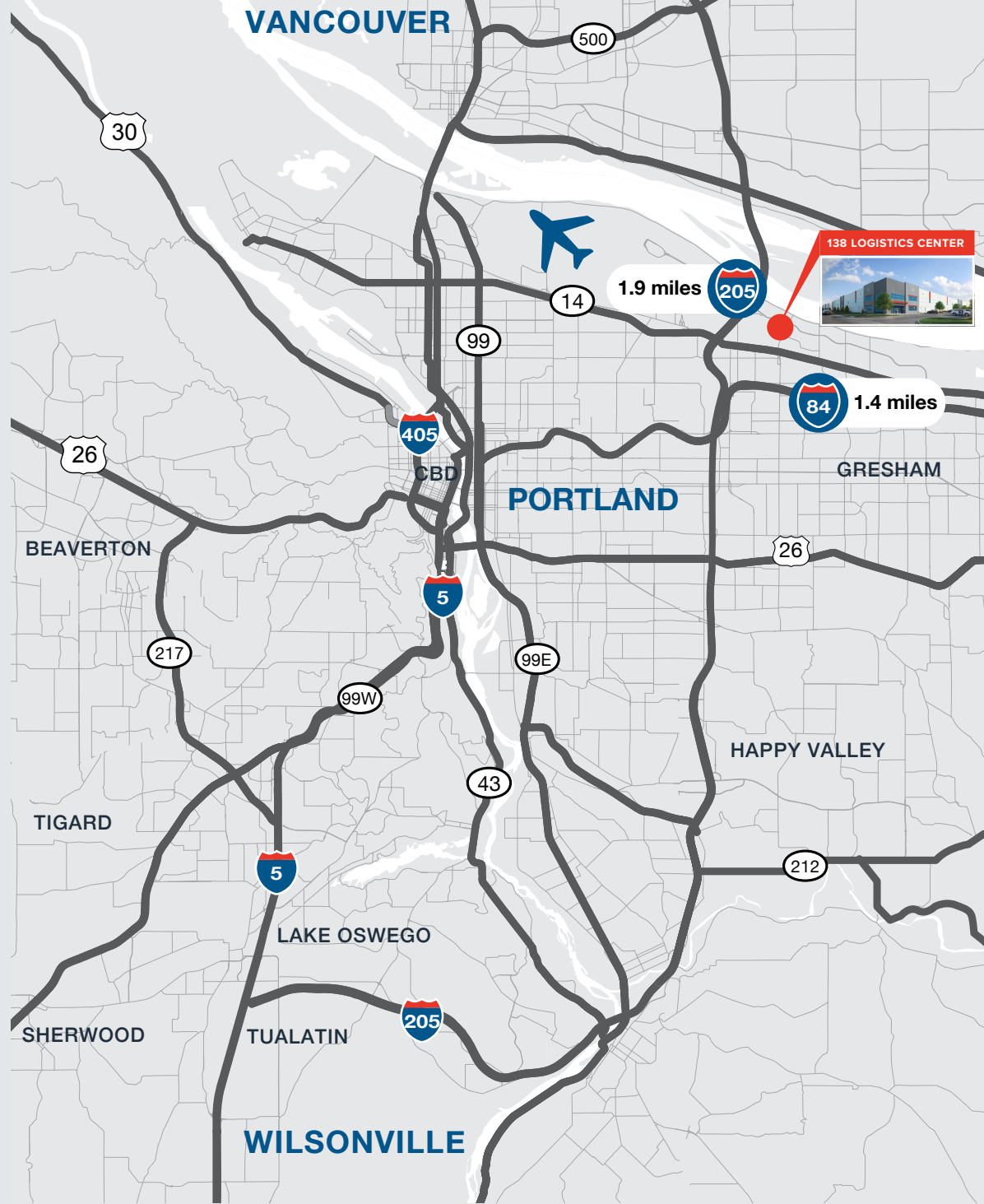
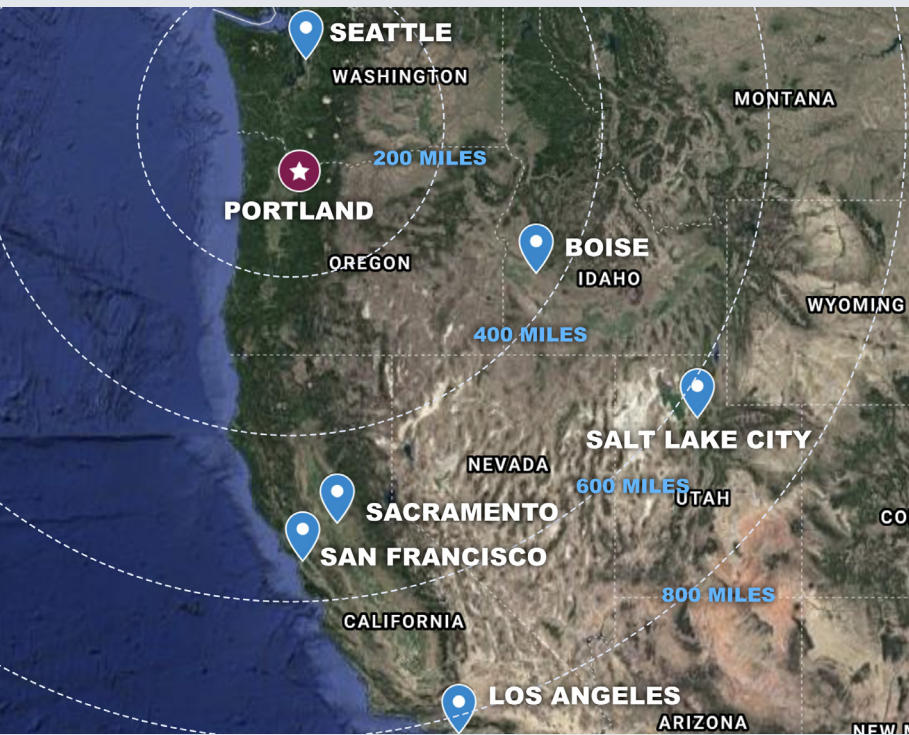
138 LOGISTICS CENTER

4840 NE 138TH AVENUE, PORTLAND, OR 97230

STRATEGICALLY LOCATED

The property has unfettered access to I-205 and I-84 interchanges. Located in Portland's Enterprise Zone offering new business tax incentives and access to a large employee base, making this a world-class logistics center location capable of meeting customer demand.

- Labor pool of nearly 2 million workers within a 30 mile radius
- Well positioned to access major west coast cities, the midwest, and international markets



FOR LEASE

138 LOGISTICS CENTER

4840 NE 138TH AVENUE, PORTLAND, OR 97230

AIRPORT WAY SUBMARKET

Airport Way is named after its proximity to Portland International Airport. It is home to over 150 industrial tenants including, Portland’s Air Cargo Facilities and Portland International Center, a 458 acre logistics center. This submarket has traditionally been the most desired for logistics companies with easy accessibility to major transportation arterials including I-5/I-205 going north and south and I-84 going east and west.

DEMOGRAPHICS

	1 MILE	3 MILES	5 MILES
Total Population	8,251	86,468	321,244
Total Households	3,095	32,686	121,630
Total Businesses	510	3,651	12,512
Average Household Income	\$89,198	\$75,762	\$83,352

DRIVE TIMES

Portland International Airport:	9 min	Nearest Amazon Distribution Hub:	10 min
Port of Portland:	10 min	Nearest UPS Distribution Hub:	22 min
Port of Vancouver:	22 min	Nearest USPS Distribution Hub:	14 min
Nearest FedEx Distribution Hub:	10 min		



FOR LEASE

138 LOGISTICS CENTER

4840 NE 138TH AVENUE, PORTLAND, OR 97230

THE DEVELOPMENT TEAM



Clarion Partners, LLC, has been a leading real estate investment manager for more than 39 years. Headquartered in New York, the Firm maintains strategically located offices across the United States and Europe. With over \$65.9 billion in total real estate assets under management, Clarion Partners offers a broad range of equity and debt strategies across the risk/return spectrum to its 500 institutional investors across the globe. More information about the Firm is available at www.clarionpartners.com.



Phelan Development is a privately held real estate company with over \$5 billion of development experience. They are focused on developing high-quality industrial projects and pride themselves on the ability to deliver well-designed buildings in strategic locations. Their expertise and attention to detail have helped them establish a reputation for producing and managing attractive, well-designed buildings that meet the diverse needs of our customers.

