

3001 Darrell Rd, Island Lake, IL

Short/Flexible Lease Term

~9,258 SF FOR LEASE



## SPECIFICATIONS

AVAILABLE SIZE: ~9,258 SF Overflow Storage Space

OFFICE SIZE: None

BUILDING SIZE: 207,332 SF

LAND AREA: 17.58 Acres

LOADING: 3 Ext. Docks; 1 DID (Shared)

POWER: TBD

CEILINGS: 18' Clear

COLUMN SPACING: 40' x 40'

SPRINKLERED: Yes

PARKING: Ample

ZONING: I

AGE: Varies (1976, 1981, 2001, 2006 and 2012)

LEASE RATE: \$6.95 - \$7.50 PSF Modified Gross

- Ideal for overflow storage
- Large paved outdoor area for heavy parking or outside storage potential

## Contact

Dan Benassi, SIOR, Managing Broker  
847-310-4298  
[dbenassi@entrecmercial.com](mailto:dbenassi@entrecmercial.com)

Dan Jones, SIOR  
847-310-4299  
[djones@entrecmercial.com](mailto:djones@entrecmercial.com)

Marc Bartolini  
708-256-9615  
[mbartolini@entrecmercial.com](mailto:mbartolini@entrecmercial.com)

[www.entrecmercial.com](http://www.entrecmercial.com) | 847-310-4295

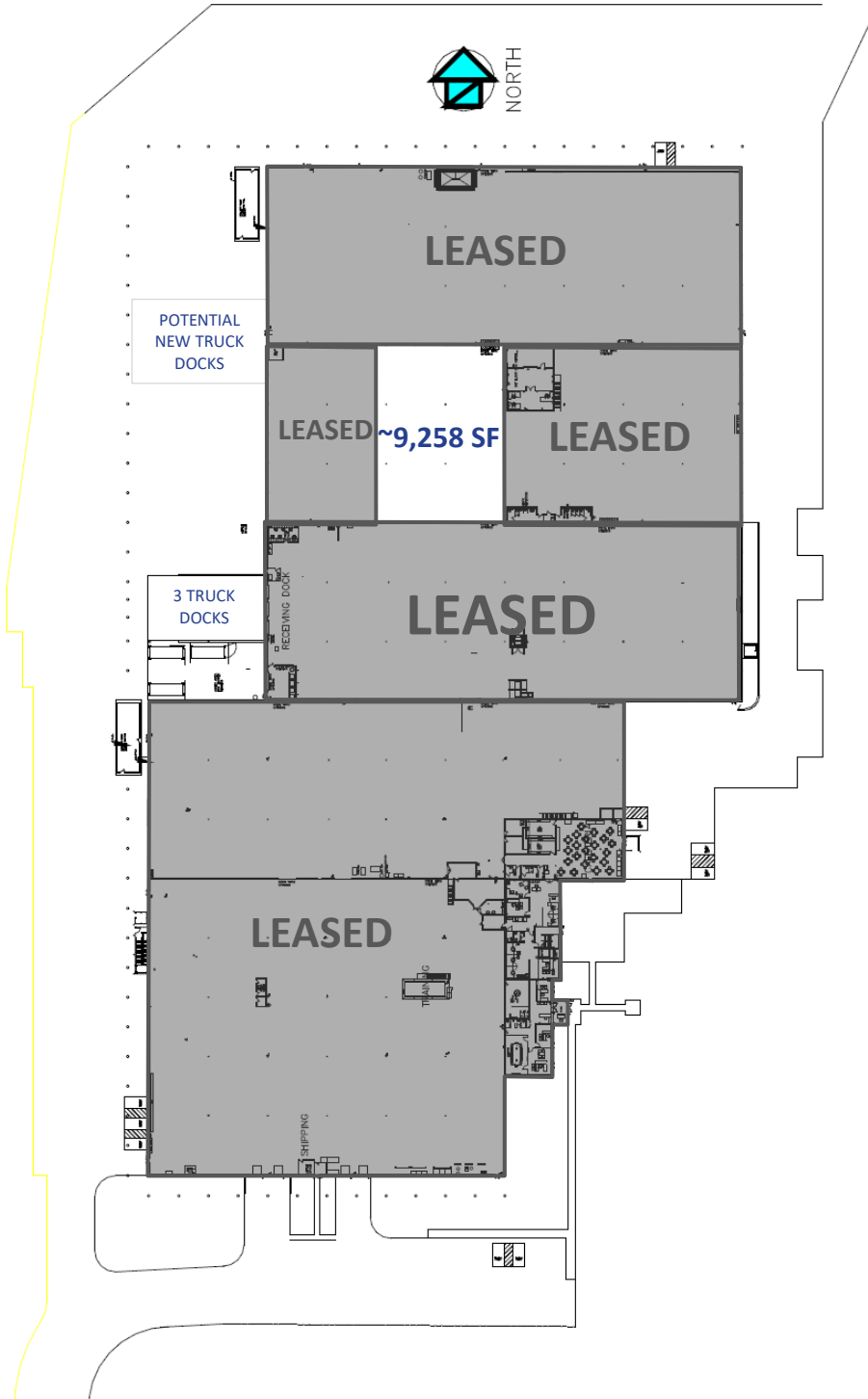
3550 Salt Creek Lane, Suite 104, Arlington Heights, IL. 60005

**ENTRE**  
Commercial Realty LLC

3001 Darrell Rd, Island Lake, IL

~9,258 SF FOR LEASE

AVAILABILITY



[www.entrecommercial.com](http://www.entrecommercial.com) | 847-310-4295

3550 Salt Creek Lane, Suite 104, Arlington Heights, IL. 60005



# 3001 Darrell Rd, Island Lake, IL

**~9,258 SF FOR LEASE**



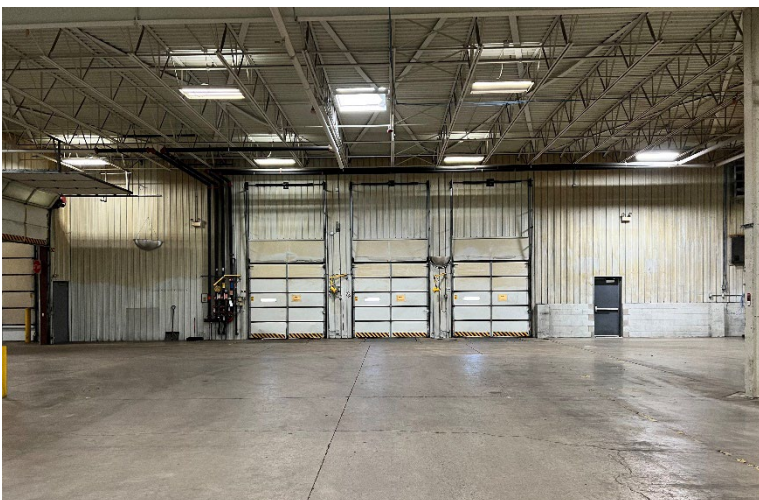
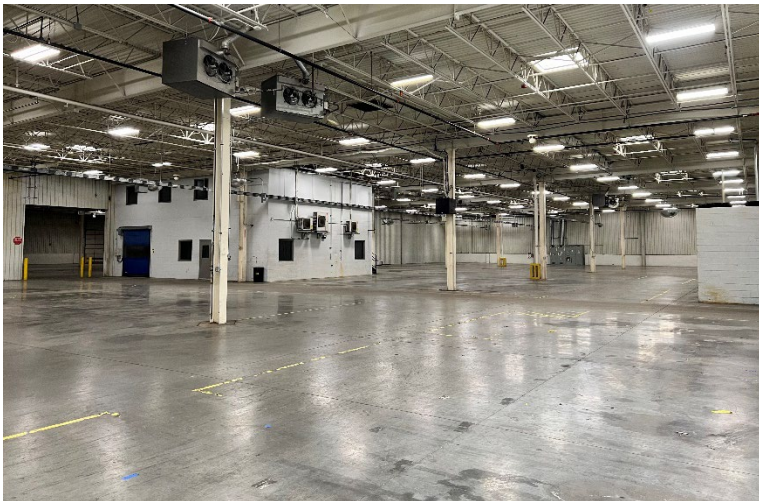
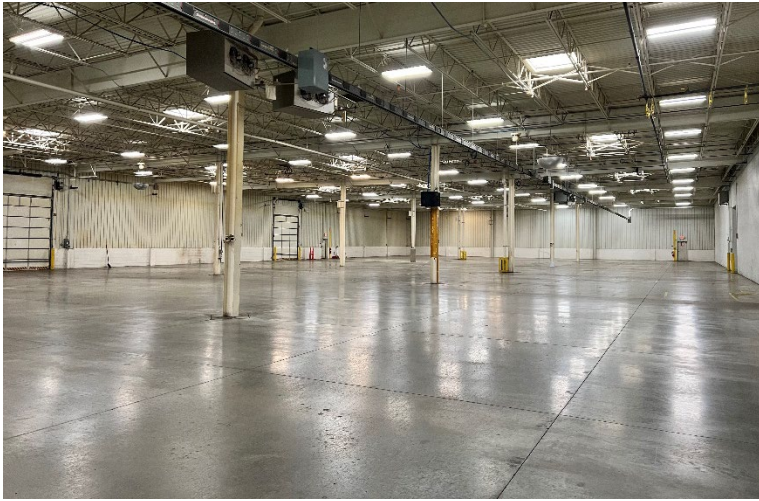
[www.entrecommercial.com](http://www.entrecommercial.com) | 847-310-4295

3550 Salt Creek Lane, Suite 104, Arlington Heights, IL. 60005



# 3001 Darrell Rd, Island Lake, IL

~9,258 SF FOR LEASE



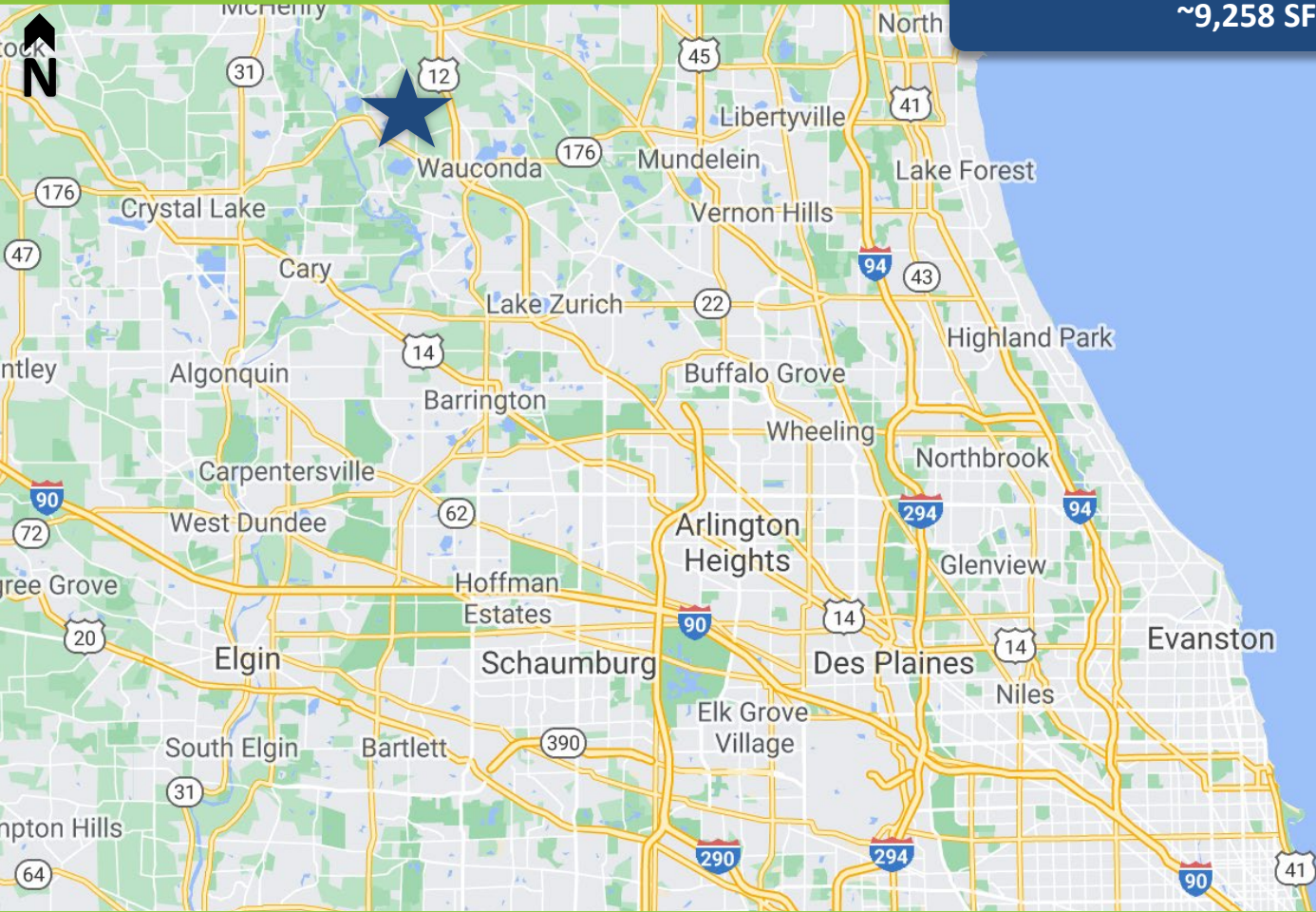
[www.entrecommercial.com](http://www.entrecommercial.com) | 847-310-4295

3550 Salt Creek Lane, Suite 104, Arlington Heights, IL. 60005



## 3001 Darrell Rd, Island Lake, IL

~9,258 SF FOR LEASE



## LOCATION

- Economical option to serve northern IL and southern WI
- Easy Access to Route 12 and IL-176
- Located in western Lake County, IL



[www.entrecommercial.com](http://www.entrecommercial.com) | 847-310-4295

3550 Salt Creek Lane, Suite 104, Arlington Heights, IL. 60005

**ENTRE**  
Commercial Realty LLC