



613 SW Sheridan Rd.
Lawton, OK 73505



Lease Price: \$1,100.00/mo

Size: 2,400sf

Zoning: C-5

Additional Information: Freestanding building on Sheridan Rd. Previous use was a muffler shop. Has two restrooms and one is ADA accessible. More parking in the rear.

**For Further Details Contact:
Jason Wells, Listing Broker
Insight Commercial Real Estate Brokerage, LLC
622 SW "D" Ave.
Lawton, OK 73501
www.insightbrokers.com
580.353.6100**

The information contained herein has been obtained from the Owner and other reliable sources and is offered as an aid for investment analysis. Although deemed reliable, information is not guaranteed and is provided subject to errors, omissions, prior sale or withdrawal. Any referenced square foot sizes are taken from Comanche County Assessor's office. Insight Commercial Real Estate Brokerage, LLC, Jason Wells Managing Broker



613 SW Sheridan Rd.
Lawton, OK 73505

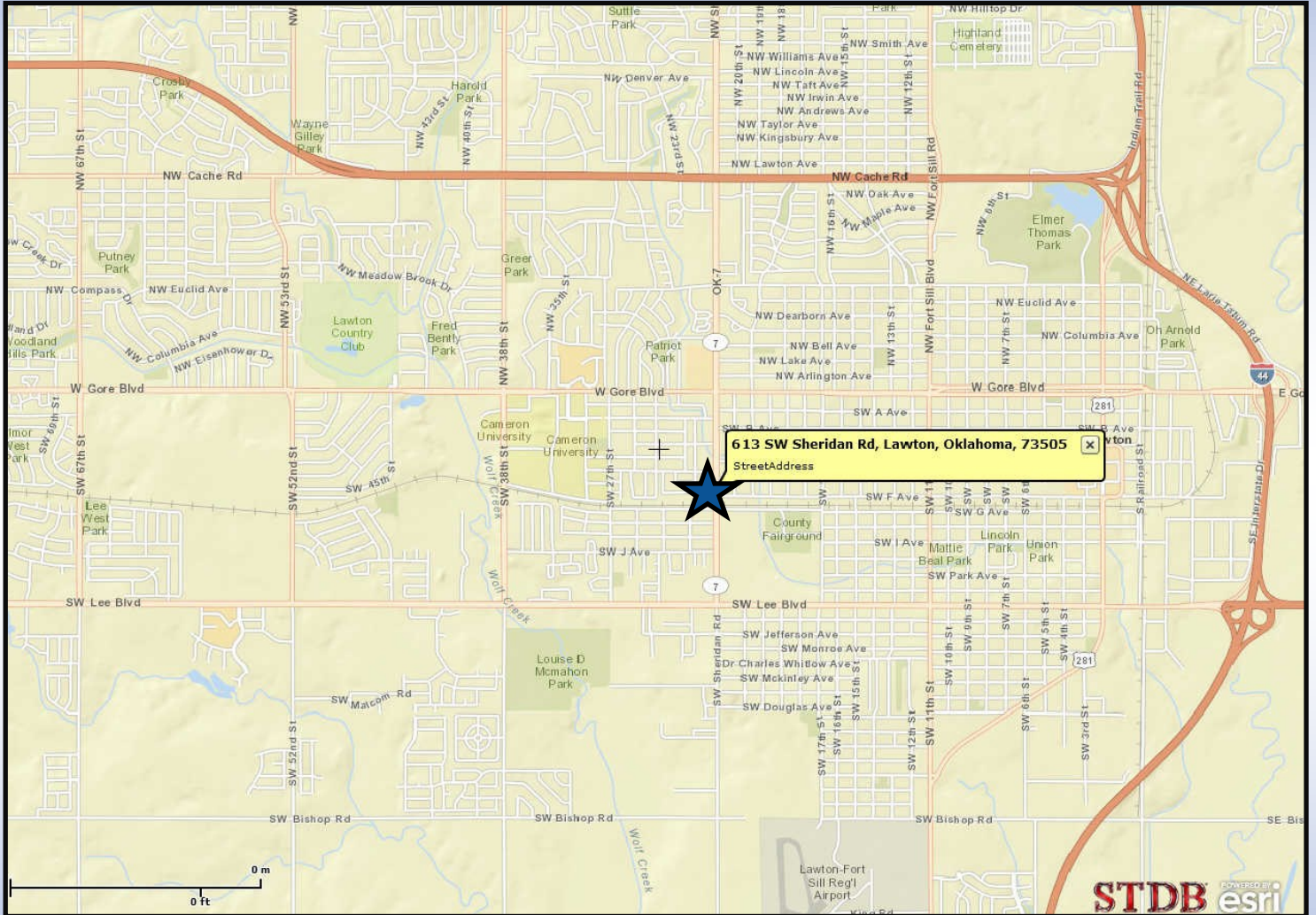


For Further Details Contact:
Jason Wells, Listing Broker
Insight Commercial Real Estate Brokerage, LLC
622 SW "D" Ave.
Lawton, OK 73501
www.insightbrokers.com
580.353.6100

The information contained herein has been obtained from the Owner and other reliable sources and is offered as an aid for investment analysis. Although deemed reliable, information is not guaranteed and is provided subject to errors, omissions, prior sale or withdrawal. Any referenced square foot sizes are taken from Comanche County Assessor's office. Insight Commercial Real Estate Brokerage, LLC, Jason Wells Managing Broker



613 SW Sheridan Rd.
Lawton, OK 73505



For Further Details Contact:
Jason Wells, Listing Broker
Insight Commercial Real Estate Brokerage, LLC
622 SW "D" Ave.
Lawton, OK 73501
www.insightbrokers.com
580.353.6100

The information contained herein has been obtained from the Owner and other reliable sources and is offered as an aid for investment analysis. Although deemed reliable, information is not guaranteed and is provided subject to errors, omissions, prior sale or withdrawal. Any referenced square foot sizes are taken from Comanche County Assessor's office. Insight Commercial Real Estate Brokerage, LLC, Jason Wells Managing Broker