

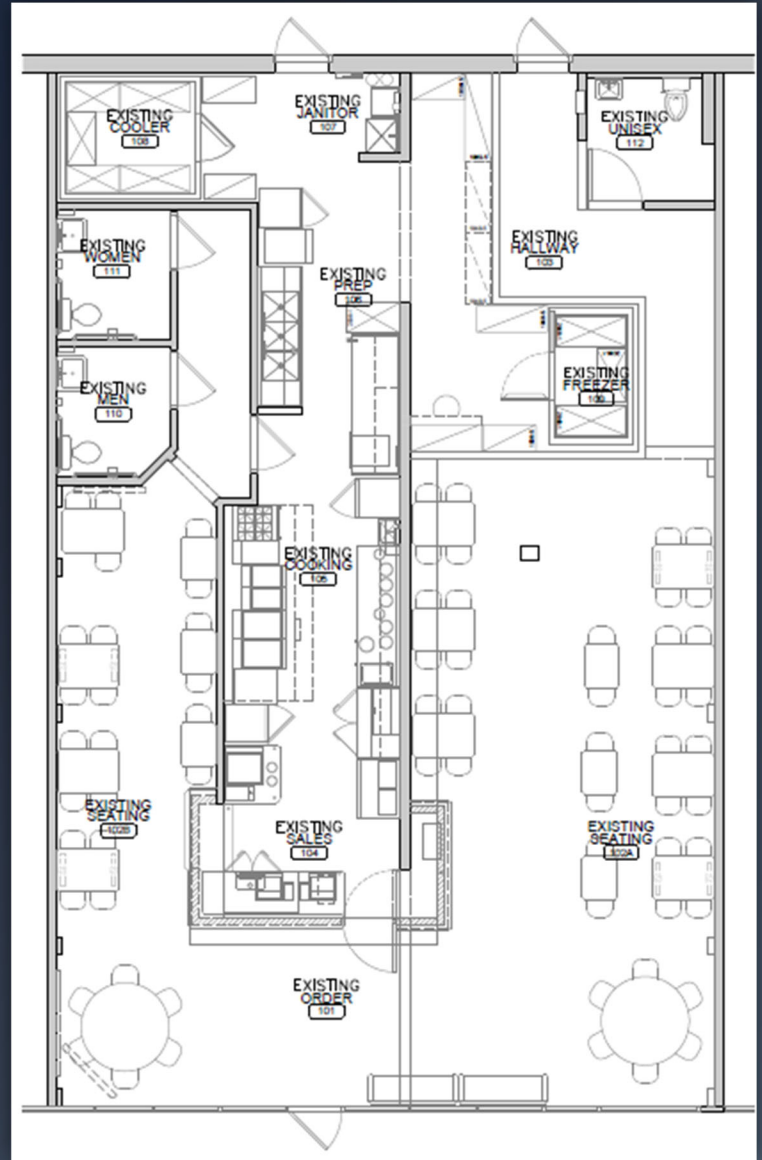
SUITE 660

PRICING SUMMARY:

Size: 2,250SF
Base Rent: \$45.00 PSF/yr.
Triple Nets: \$8.89 PSF/yr.
Total: \$10,104/mo.

COMMENTS

- Second generation Restaurant
- Little Road frontage



Phillip Carameros (832. 937.5900) phillip@gordonpartners.com
Jenny Nguyen (409.900.2060) jenny@gordonpartners.com