



aries

MULTIPLE SPACES AVAILABLE
2,224 - 9,000 SF AVAILABLE
FREE STANDING FORMER BANK BRANCH AVAILABLE

101 Carver Rd | Plymouth, MA

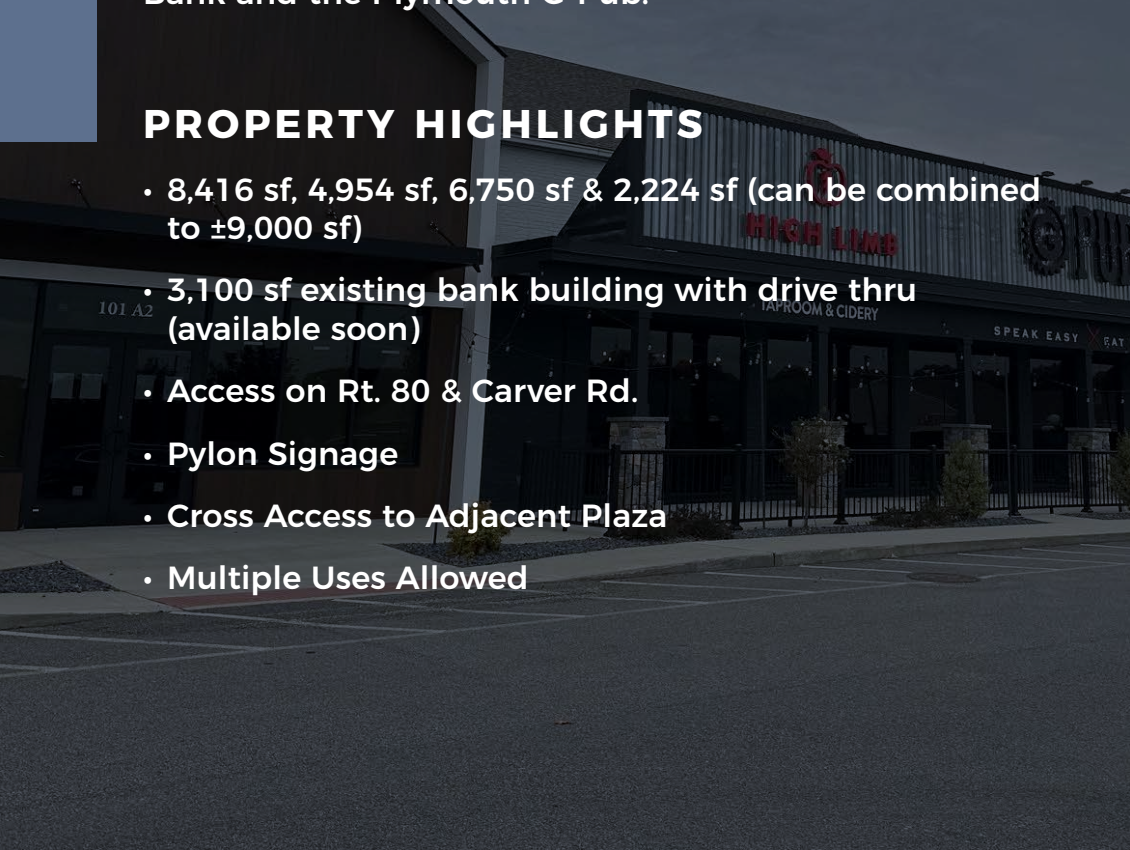
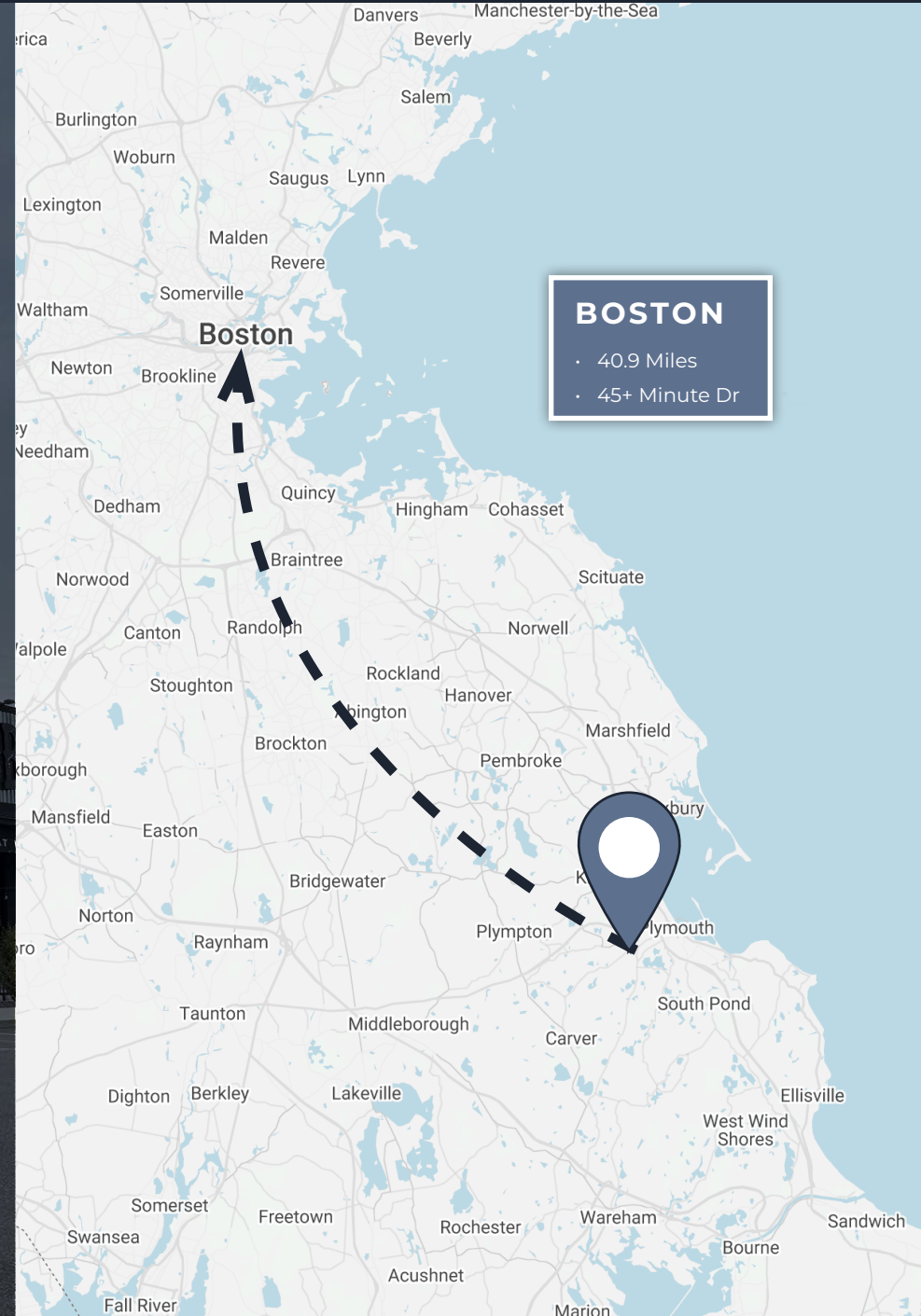
Jeffrey A. White
Partner & Principal Broker
jwhite@ariescre.com
978.821.8396

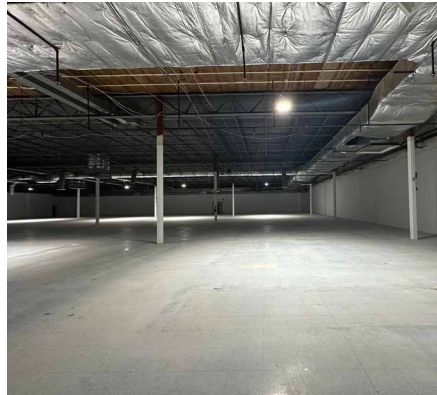
PROPERTY SUMMARY

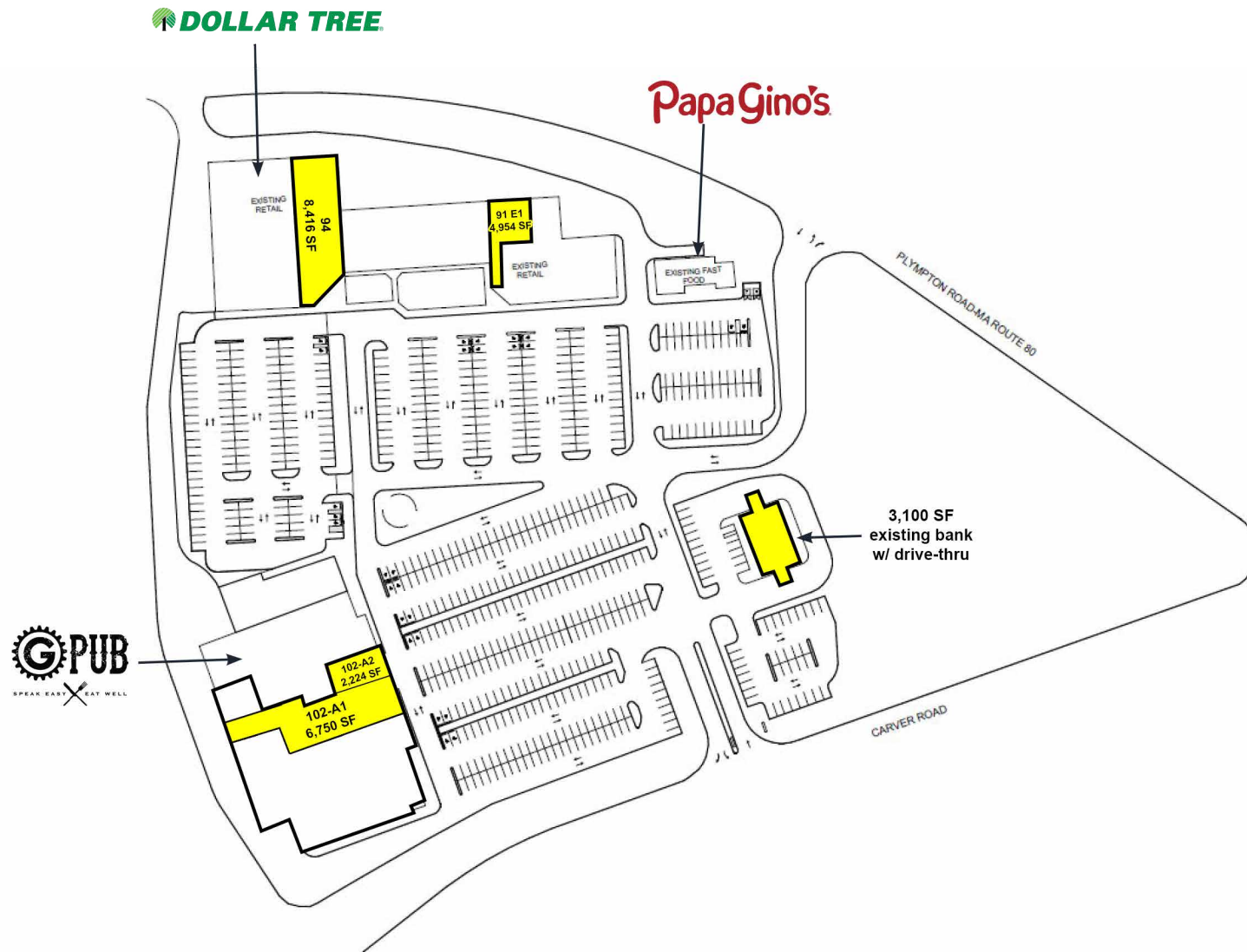
Aries Commercial Real Estate, LLC is pleased to present multiple spaces for lease at West Plymouth Square, located at 101 Carver Road, Plymouth MA. Available spaces include 2,224 sf, 4,954 sf, 6,750 sf & 8,416 sf retail space and a 3,100 sf existing bank building with drive-thru. Ownership has recently invested in property upgrades including building facades and parking lot resurfacing. With easy access off both Carver Road and Plympton Road, the site is well positioned and benefits from other area retailers such as Market Basket, HomeGoods, Marshalls, Cape Cod 5, Dollar Tree, Eastern Bank and the Plymouth G-Pub.

PROPERTY HIGHLIGHTS

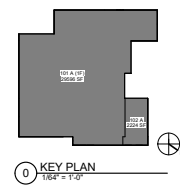
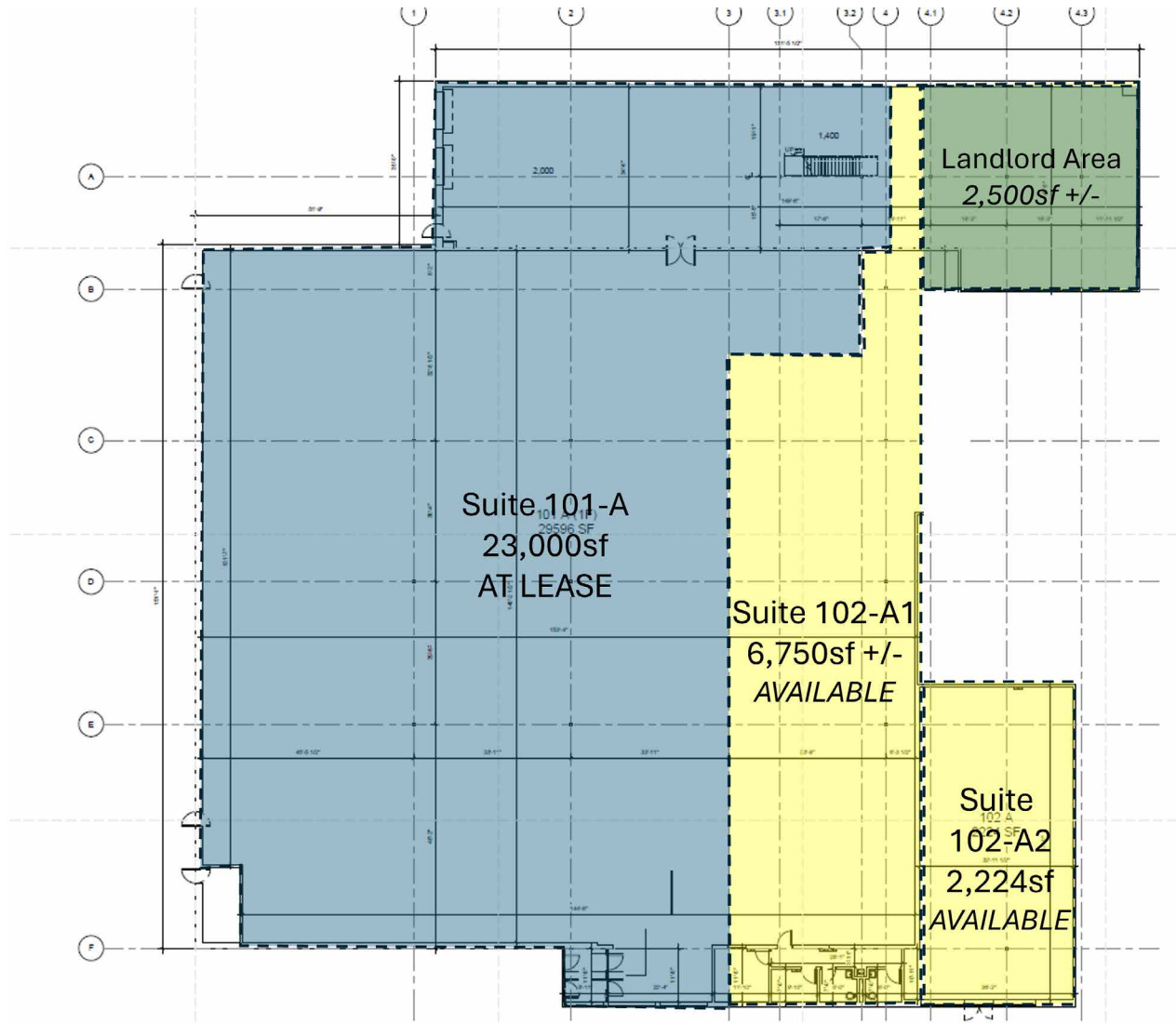
- 8,416 sf, 4,954 sf, 6,750 sf & 2,224 sf (can be combined to ±9,000 sf)
- 3,100 sf existing bank building with drive thru (available soon)
- Access on Rt. 80 & Carver Rd.
- Pylon Signage
- Cross Access to Adjacent Plaza
- Multiple Uses Allowed



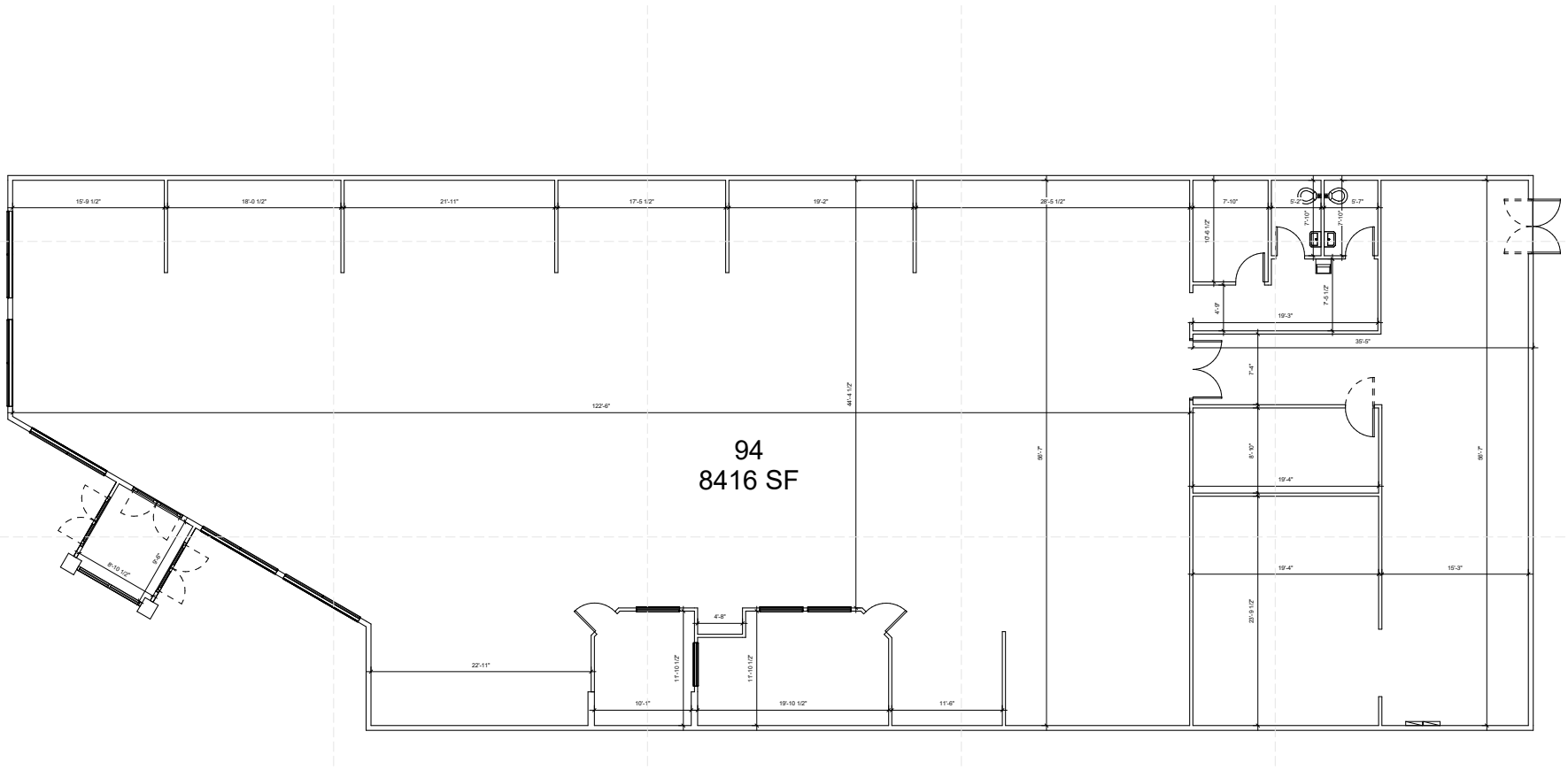




FLOOR PLAN



FLOOR PLAN



LOCAL AMENITIES



LOWE'S

3

44

target macys
REGAL

TALBOTS
OLD NAVY
five BELOW
verizon ULTA BEAUTY
Starbucks MOE'S
Olive Garden tropical CAFE
COLD STONE CREAMERY

HARBOR FREIGHT
QUALITY TOOLS LOWEST PRICES
Staples
STOP & SHOP
McDonald's Holiday Inn Express

Walmart

Chick-fil-A
FIVE GUYS
BURGERS and FRIES

Wendy's
DUNKIN'
CHASE

Subject Property

DOLLAR TREE

Burlington Michaels BEST BUY
petco DICK'S SPORTING GOODS Red Robin
ALDI Hampton by HILTON JARED
Fairfield BY MARRIOTT TJ-MAXX

11,680+ VPD

17,350+ VPD

MARKET BASKET
Marshalls

5 MINUTES
TO ROUTE 3

DEMOGRAPHICS



2024 SUMMARY	1 MILE	3 MILES	5 MILES
Population	5,291	29,067	49,542
Daytime Population	3,336	18,971	29,680
Households	2,279	12,293	19,803
Families	1,504	7,399	12,618
Average Household Size	2.31	2.33	2.41
Owner Occupied Housing Units	1,788	8,019	14,420
Renter Occupied Housing Units	491	4,274	5,383
Median Age	47.0	45.0	45.0
Median Household Income	\$108,023	\$94,227	\$100,681
Average Household Income	\$136,302	\$124,565	\$133,808

PLYMOUTH, MA

Plymouth, Massachusetts, is a historic coastal town that beautifully combines a rich American heritage with modern appeal. Famous for its role in the founding of Plymouth Colony in 1620, Plymouth draws history enthusiasts to iconic landmarks like Plymouth Rock, the Mayflower II, and Plimoth Patuxet Museums, offering a deep dive into colonial life. The town's downtown and waterfront areas are lined with charming colonial architecture, unique shops, and an array of dining spots, many with scenic views of Plymouth Harbor, adding to its vibrant, small-town feel.

Outdoor enthusiasts will enjoy Plymouth's natural beauty, with options ranging from sandy beaches like White Horse Beach to the tranquil ponds and hiking trails at Morton Park. Miles Standish State Forest is a favorite for those who enjoy hiking, biking, and camping, while Plymouth Harbor offers boating, fishing, and kayaking opportunities. Plymouth's close-knit community is supported by cultural centers like the Plymouth Center for the Arts and Spire Center for Performing Arts, which host concerts, art exhibitions, and festivals year-round, including the renowned Thanksgiving Parade and the Plymouth Waterfront Festival.

Families are attracted to Plymouth for its strong educational system, with Plymouth Public Schools offering a range of academic and extracurricular programs, making it a great place to raise children. The town also has numerous recreational opportunities, from sports leagues to arts and music programs for all ages. With easy access to Boston via Route 3 and the commuter rail, Plymouth offers the perfect mix of coastal charm, suburban convenience, and historical richness, making it a desirable place for families, retirees, and professionals alike.

