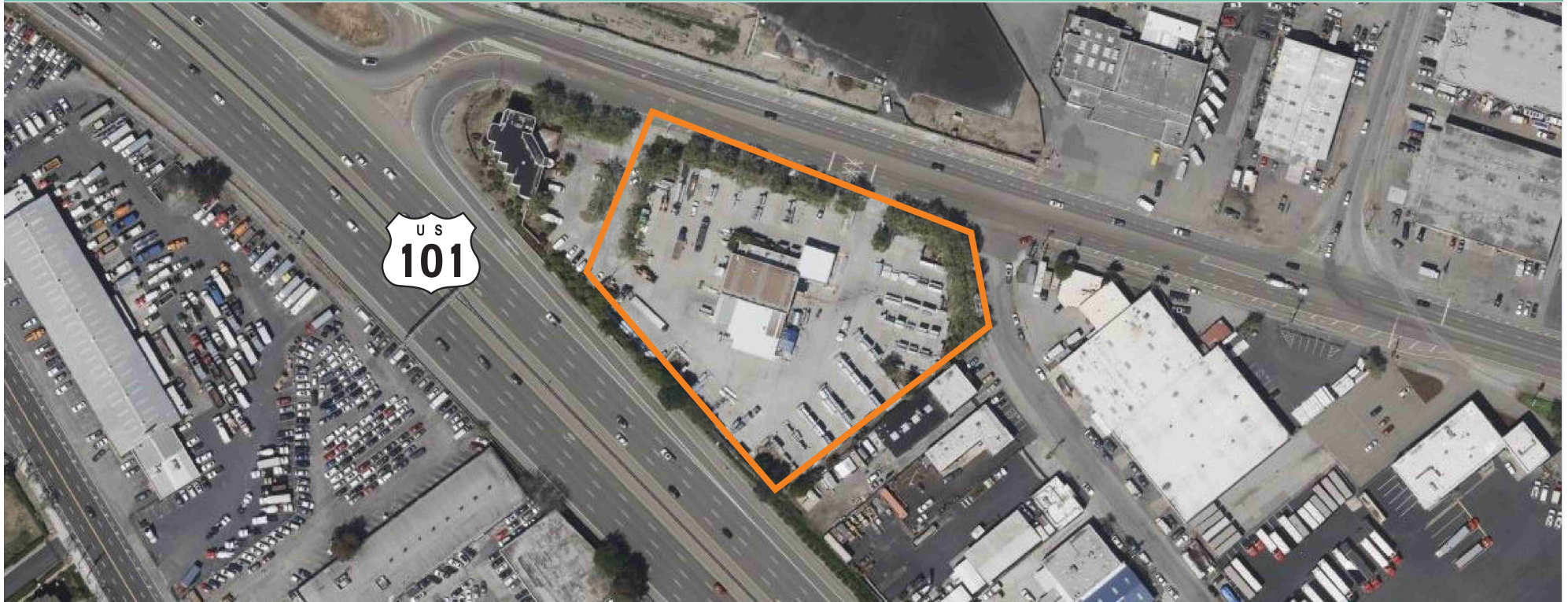


1691 Old Bayshore Hwy

San Jose, CA
95112

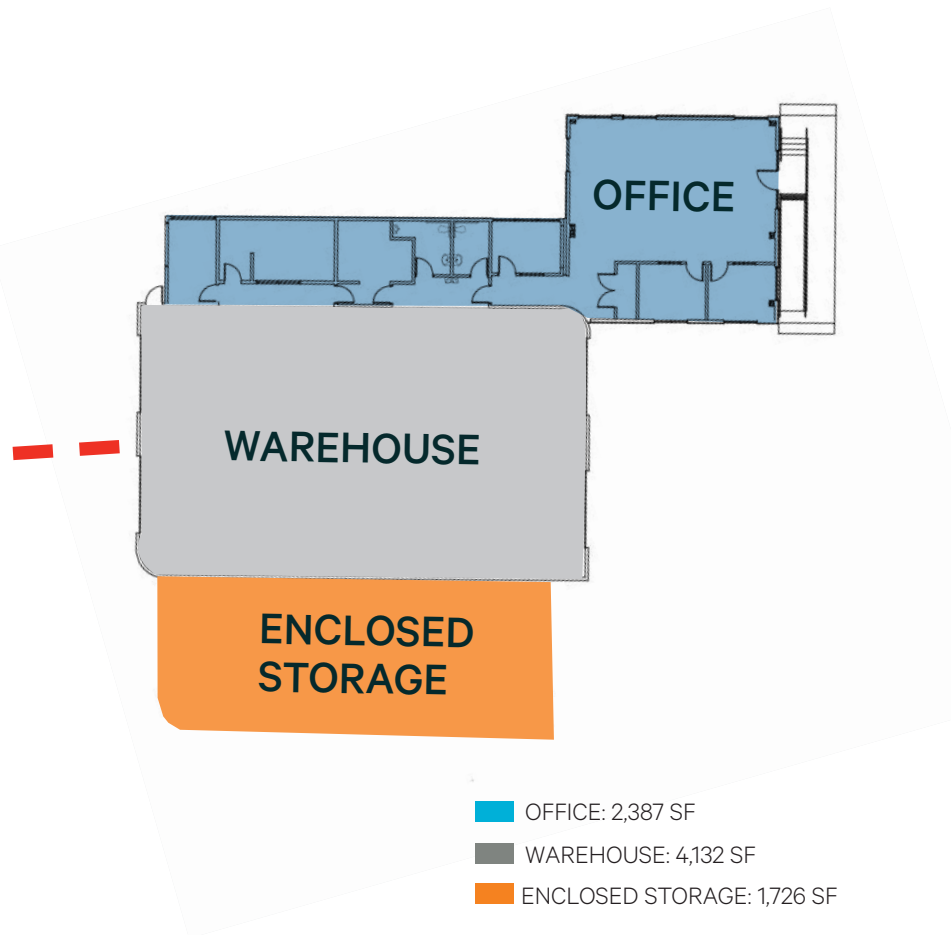
±2.73 Acres



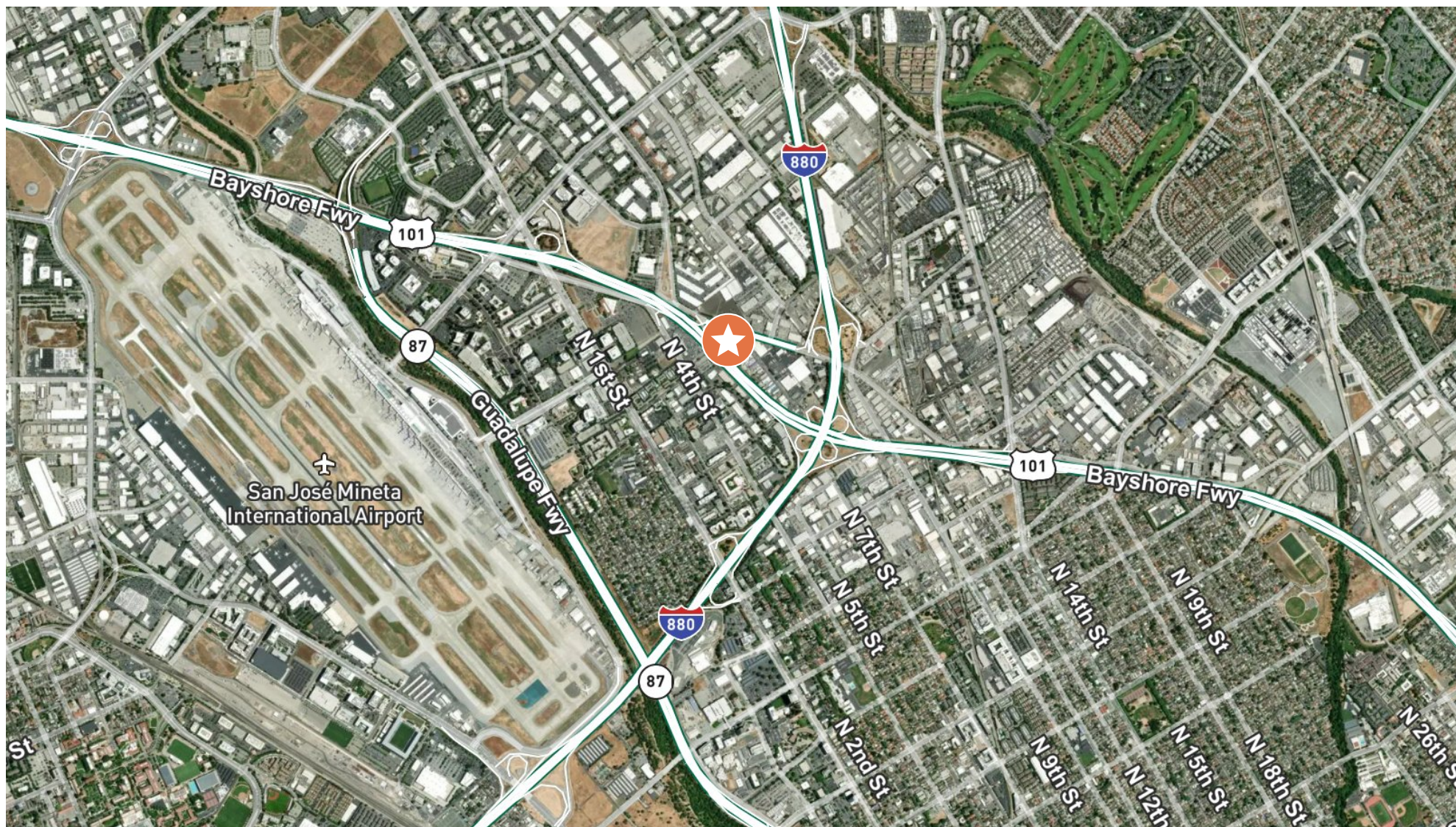
PROPERTY HIGHLIGHTS

- + ±2.73 Acres
- + ±6,519 SF
 - ±2,387 SF Office
 - ±4,132 SF Warehouse
- + ±1,726 SF Covered Storage/Loading Area
- + Freeway Identity Hwy 101
- + Immediate Access to Hwy 101 and I-880
- + Daily Traffic of Over 130,000 Vehicles
- + Easy Access to San Jose International Airport
- + Close Proximity to Hwy 87
- + 2 Miles from San Jose Bart Station

Site Plan



© 2026 CBRE, Inc. All rights reserved. This information has been obtained from sources believed reliable, but has not been verified for accuracy or completeness. You should conduct a careful, independent investigation of the property and verify all information. Any reliance on this information is solely at your own risk. CBRE and the CBRE logo are service marks of CBRE, Inc. All other marks displayed on this document are the property of their respective owners, and the use of such logos does not imply any affiliation with or endorsement of CBRE. Photos herein are the property of their respective owners. Use of these images without the express written consent of the owner is prohibited.



Contact Us

Craig Kovaleski

Senior Vice President
+1 408 453 7428
craig.kovaleski@cbre.com
Lic. 01303011

Jim Kovaleski

Senior Vice President
+1 408 453 7451
jim.kovaleski@cbre.com
Lic. 00846878

© 2026 CBRE, Inc. All rights reserved. This information has been obtained from sources believed reliable, but has not been verified for accuracy or completeness. You should conduct a careful, independent investigation of the property and verify all information. Any reliance on this information is solely at your own risk. CBRE and the CBRE logo are service marks of CBRE, Inc. All other marks displayed on this document are the property of their respective owners, and the use of such logos does not imply any affiliation with or endorsement of CBRE. Photos herein are the property of their respective owners. Use of these images without the express written consent of the owner is prohibited.