



# Bentall II

555 Burrard Street

## Space availability summary

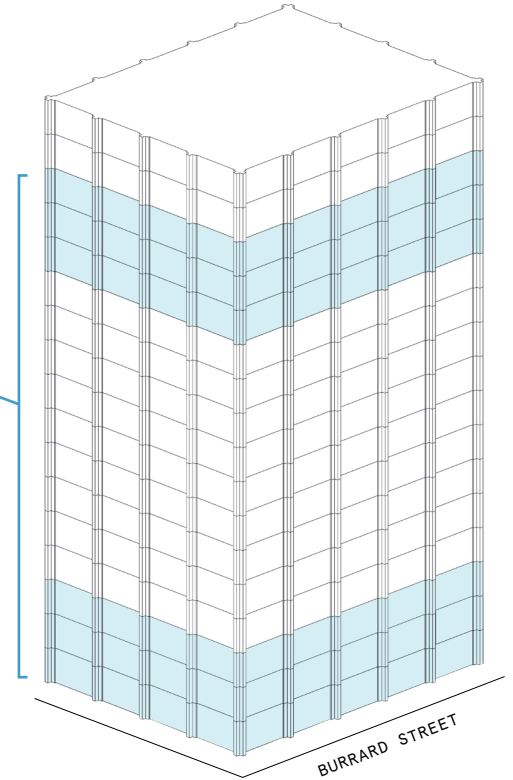
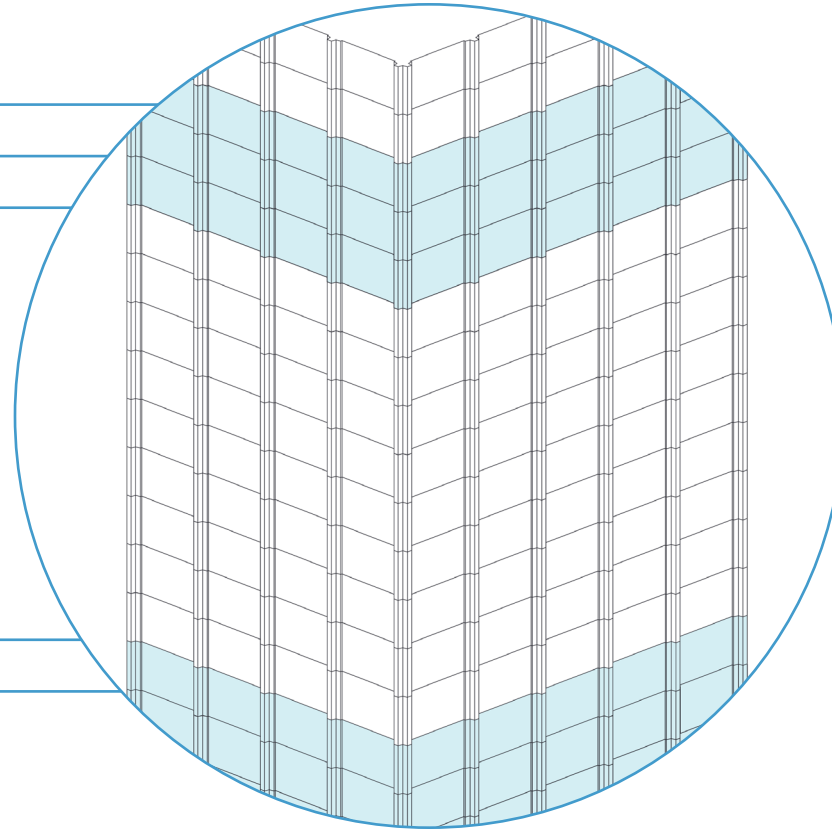
WeWork @ 555 Burrard Street  
Vancouver, BC

**wework**

VIEW VIRTUAL TOUR

16th Floor 10 782 RSF  
15th Floor 10 337 RSF  
14th Floor 10 784 RSF

3rd Floor 11 003 RSF  
2nd Floor 10 999 RSF



---

**53,905 RSF**

TOTAL WEWORK RSF

---

## Bentall II

At a glance

---

Workspaces designed for productivity and creativity with flexible size & term

---

Dedicated, private suites available from 58 to 2,177 RSF

---

Move-in ready suites furnished & wired

---

**18**

TOTAL BUILDING FLOORS

---

**174,635**

TOTAL BUILDING SQ FT



Floor-to-ceiling windows flood common spaces with bright natural light.



Vibrant furnishings and décor brings unexpected colour to this sunny lounge.

## Bright, modern workspace in a prime location

---

Bentall II is a LEED Gold and BOMA BEST Silver certified building centrally located in Vancouver's Financial District. Originally constructed in 1969, the building spans 174,635 square feet across 18 stories. WeWork's 53,905 square foot offering in Bentall II features a mix of private offices, meeting rooms, and common lounges. This workspace offers unparalleled flexibility and a uniquely vibrant personality—one reflective of the energy of Vancouver itself.

This massive, modern tower stands as one of the four landmark buildings collectively known as Bentall Centre. Anchored by WeWork, Bentall II hosts an expansive outdoor plaza and direct access to a large food service amenity located directly below in the retail concourse. It also plays host to a popular underground shopping destination known as The Shops at Bentall Centre.



A custom wooden seating alcove with built-in lighting brings warmth with a luxe, modern feel.



Bright yellow pipelines and minimal light fixtures adorn this neutral-tone space.

# A vibrant space with eclectic charm

Combining a prime location with a warm, cozy feel, Bentall II features a youthful, creative atmosphere and central access to one of the world's most exciting cities. The space's design aesthetic reflects the city's vibrant energy and artistic scene, resulting in a workspace that feels like anything but a traditional office.

- Bright common areas feature oversized windows, providing plenty of natural light and beautiful views of downtown Vancouver
- Natural materials—including rustic oak flooring and custom-built distressed wood accents—give the space warmth and character
- Patterned wallpaper and painted accent walls in forest green, poppy, and deep teal combine with natural materials and a neutral palette for a youthful but refined feel



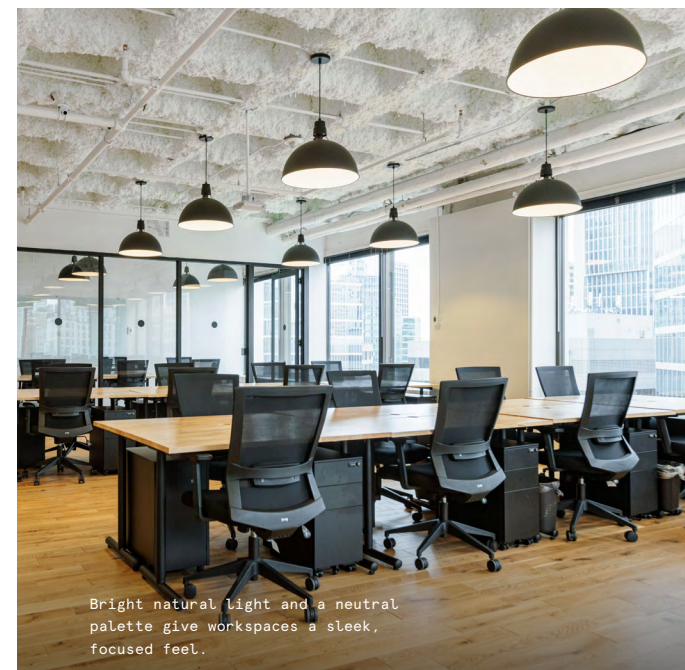
Corner windows in this shared workspace provide sweeping views of the Vancouver skyline.



Natural materials like rattan and wood bring warmth and softness to this industrial space.



Custom built-in bookshelves provide the perfect backdrop for live greenery and a colourful library.



Bright natural light and a neutral palette give workspaces a sleek, focused feel.



Custom wall coverings, muted tones, and leather sitting give this lounge the feel of an inviting home study.



A mix of saturated and neutral tones, natural and industrial materials, and irreverent décor pieces define this workspace's eclectic style.

## On-site amenities

---

- 24/7 security
- Electronic keycard access
- Web-based visitor access
- Meeting rooms
- Wellness/meditation room
- Locker room with showers
- Gender-neutral restrooms
- Phone booths
- Landscaped plaza
- Pet-friendly spaces
- Bicycle storage
- On-site parking
- Access to car charging stations
- Emergency back-up power
- Supplemental HVAC and electric
- Fitness center

# Building specifications

---



## Hours of operation

---

Monday - Friday:  
9am-6pm



## Security

---

Attended lobby:  
Monday - Friday: 9am-6pm

24/7 CCTV monitoring



## Certifications

---

BOMA Best Silver certified

LEED Platinum certified

Energy Star certified



## Building history

---

Built in 1969

Renovated in 2020

Developed by Dominion  
Construction



## Ceiling heights

---

1st floor: 20 feet slab-to-slab

2nd-16th floor: 14 feet slab-to-slab



## HVAC

---

Monday - Friday:  
6am-6pm



## Building size

---

18 stories

175,365 SF



## Elevators

---

6 passenger elevators

1 freight elevator



## Fire strategy




---

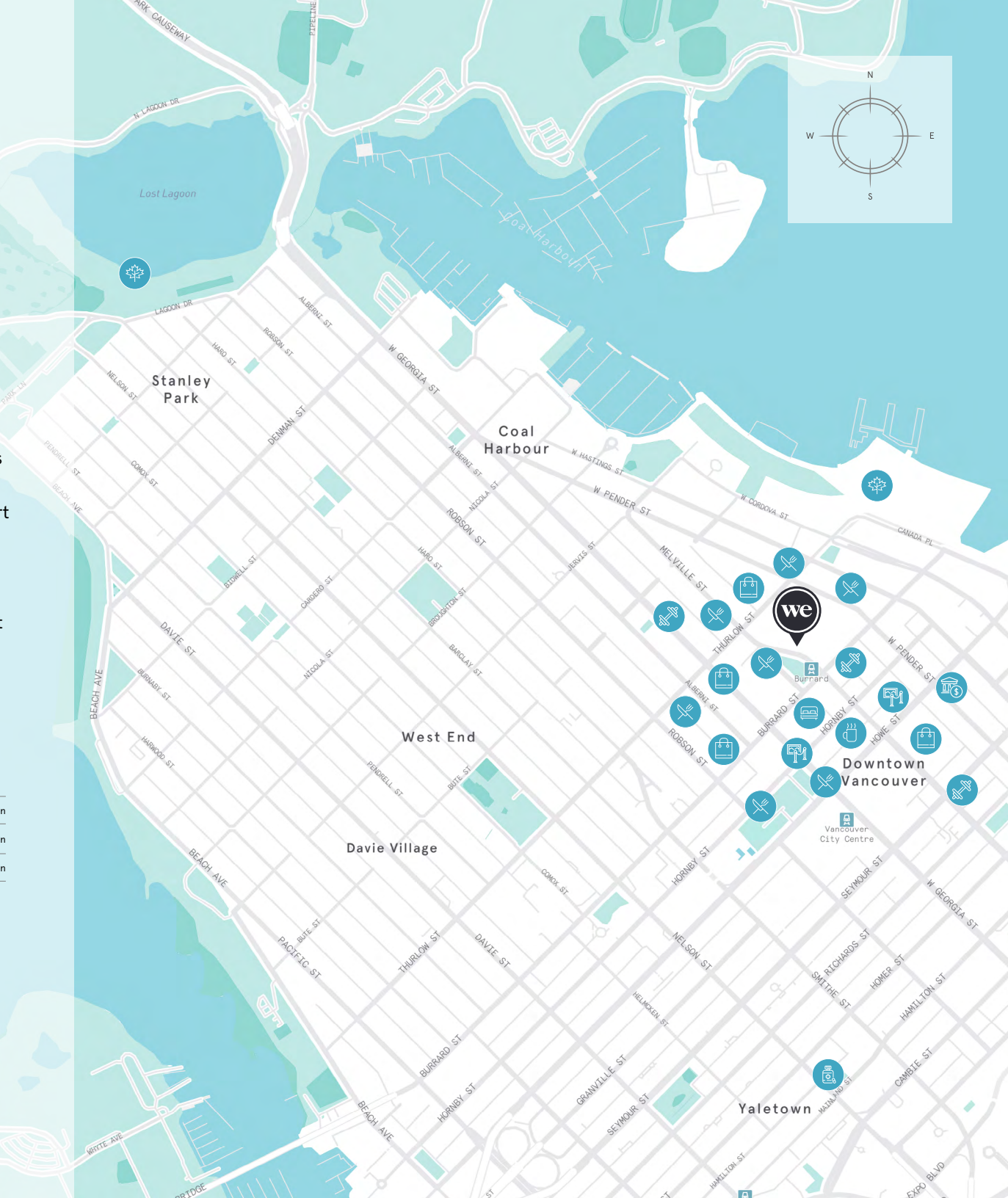
Fully-sprinklered floors

# Easy access to the best of Vancouver

Thanks to its prime downtown location, Bentall II gives members and guests easy access to attractions like the Stanley Park seawall and views of the Burrard Inlet from nearby Jack Poole Plaza. With plenty of local restaurants and bars nearby, this space is ideal for business lunches and post-work happy hours alike. A number of nearby art galleries, parks, and fitness centres means members are never far from something to do. Better yet, convenient on-site retail at The Shops at Bentall Centre connects directly to the Burrard Street SkyTrain station, and about 1,200 buses stop in front of Bentall Centre each day, making commuting easy.

## Distance to WeWork

|                                 |   |        |
|---------------------------------|---|--------|
| Burrard SkyTrain Station        |  Walk  | 1 min  |
| Bentall Centre Bus Stop         |  Walk  | 1 min  |
| Vancouver International Airport |  Drive | 21 min |



# 2nd Floor

10,999 RSF



4  
MEETING ROOM(S)

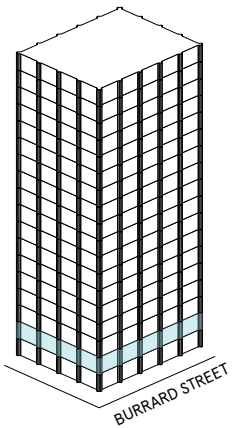
6  
SHARED WORKSPACE(S)

## LEGEND

- MEETING ROOM
- SHARED WORKSPACE
- DEDICATED SPACE



BURRARD STREET



# 2nd Floor

10,999 RSF

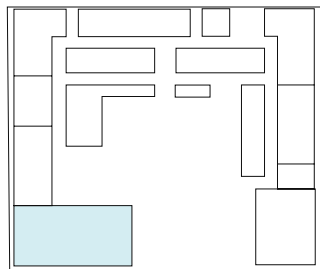
2,106 RSF Suite 02-101

1  
MEETING ROOM(S)

1  
PRIVATE OFFICE(S)



BURRARD STREET



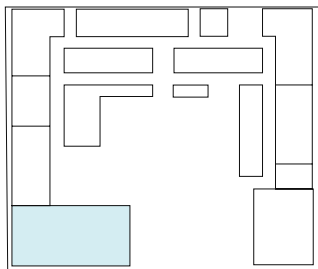
BURRARD STREET

# Suite 02-101

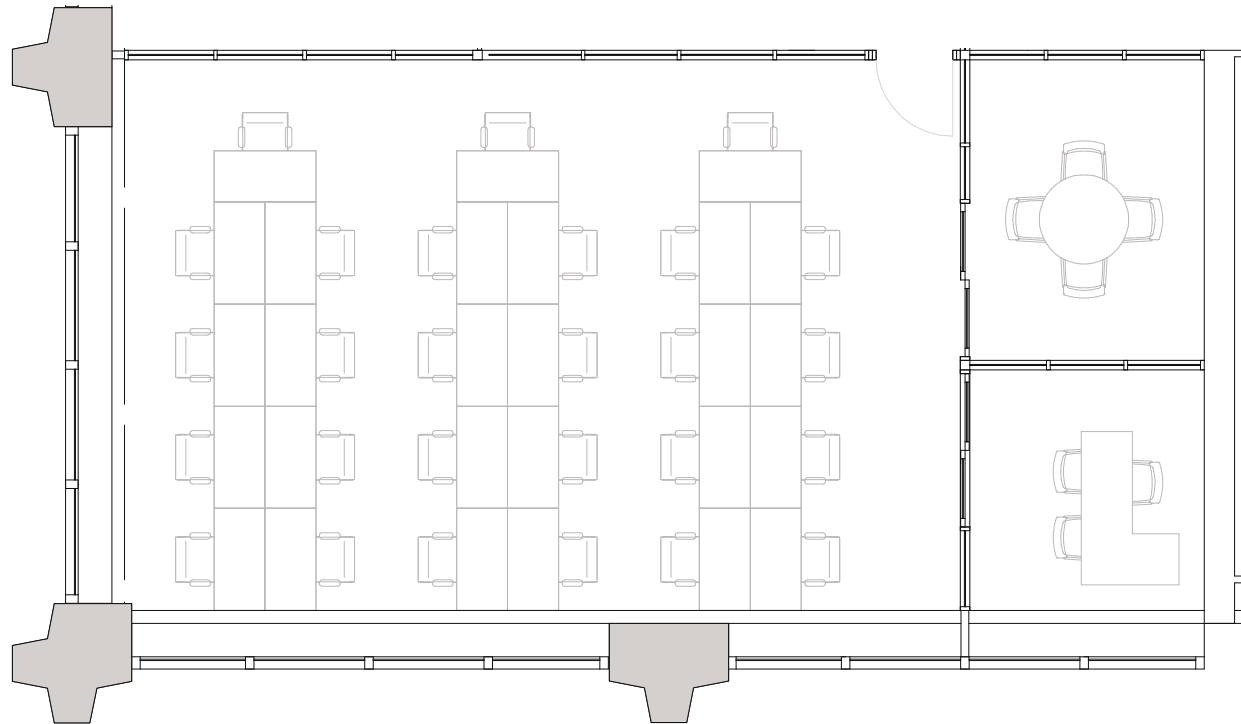
## 2nd Floor

- 1 MEETING ROOM(S)
- 1 PRIVATE OFFICE(S)

2,106 RSF  
RENTABLE AREA



BURRARD STREET



# 3rd Floor

11,003 RSF



4  
MEETING ROOM(S)

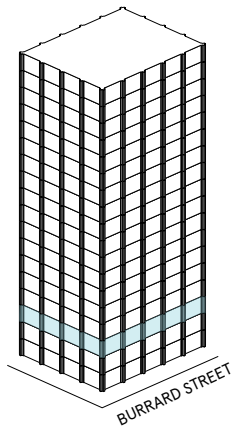
6  
SHARED WORKSPACE(S)

## LEGEND

- MEETING ROOM
- SHARED WORKSPACE
- DEDICATED SPACE



BURRARD STREET



# 3rd Floor

11,003 RSF

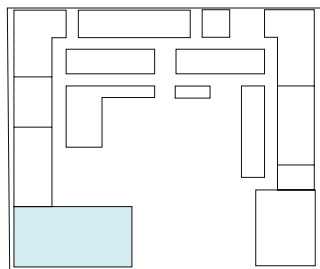
2,097 RSF Suite 03-101

1  
MEETING ROOM(S)

1  
PRIVATE OFFICE(S)



BURRARD STREET



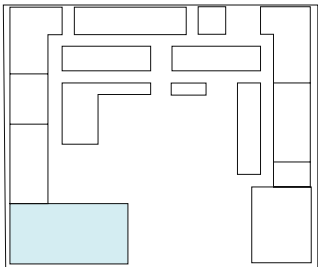
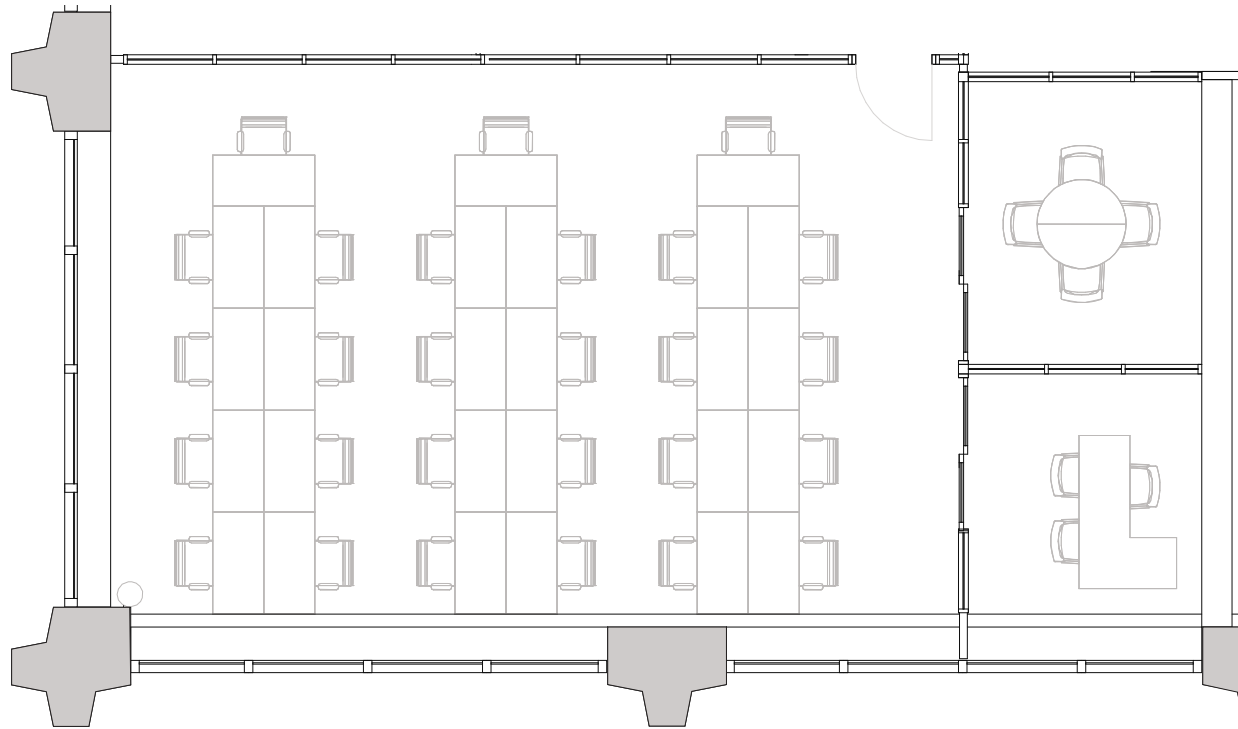
BURRARD STREET

# Suite 03-101

## 3rd Floor

- 1 MEETING ROOM(S)
- 1 PRIVATE OFFICE(S)

2,097 RSF  
RENTABLE AREA



BURRARD STREET

# 3rd Floor

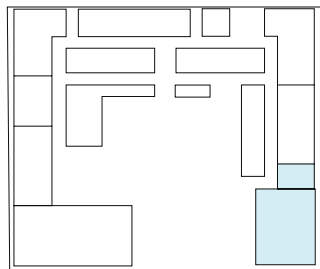
11,003 RSF

1,741 RSF Suite 03-128

1  
PRIVATE OFFICE(S)



BURRARD STREET



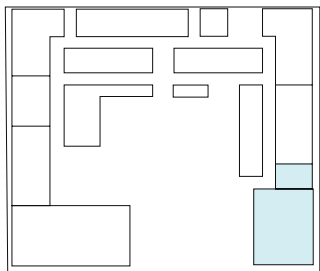
BURRARD STREET

# Suite 03-128

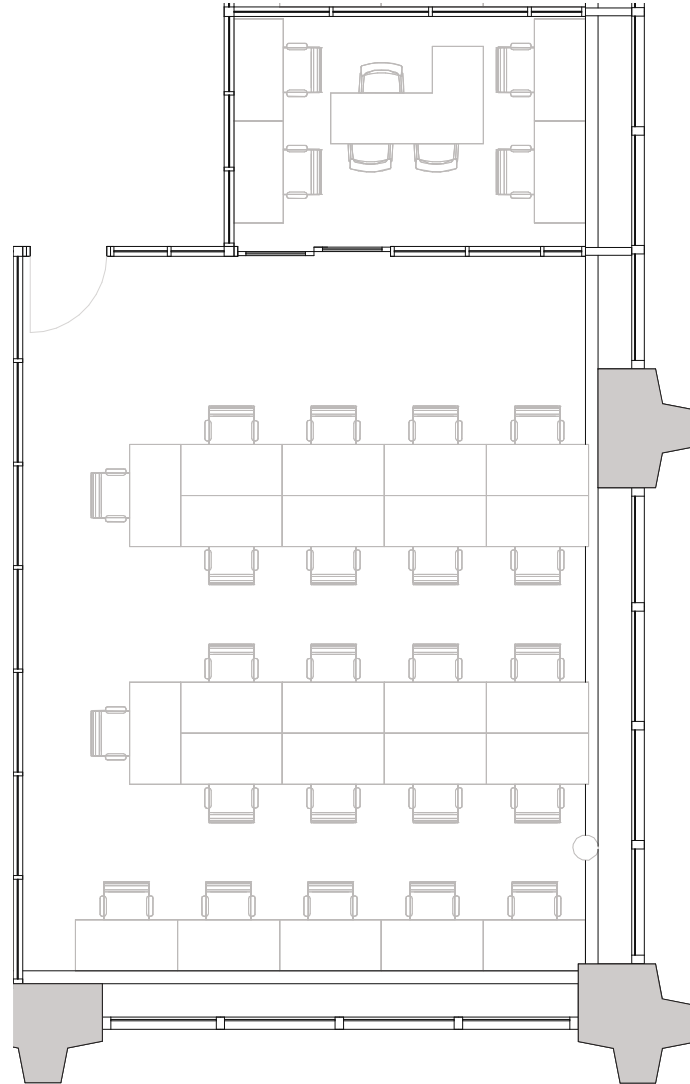
## 3rd Floor

1  
PRIVATE OFFICE(S)

1,741 RSF  
RENTABLE AREA



BURRARD STREET



# 14th Floor

10,784 RSF

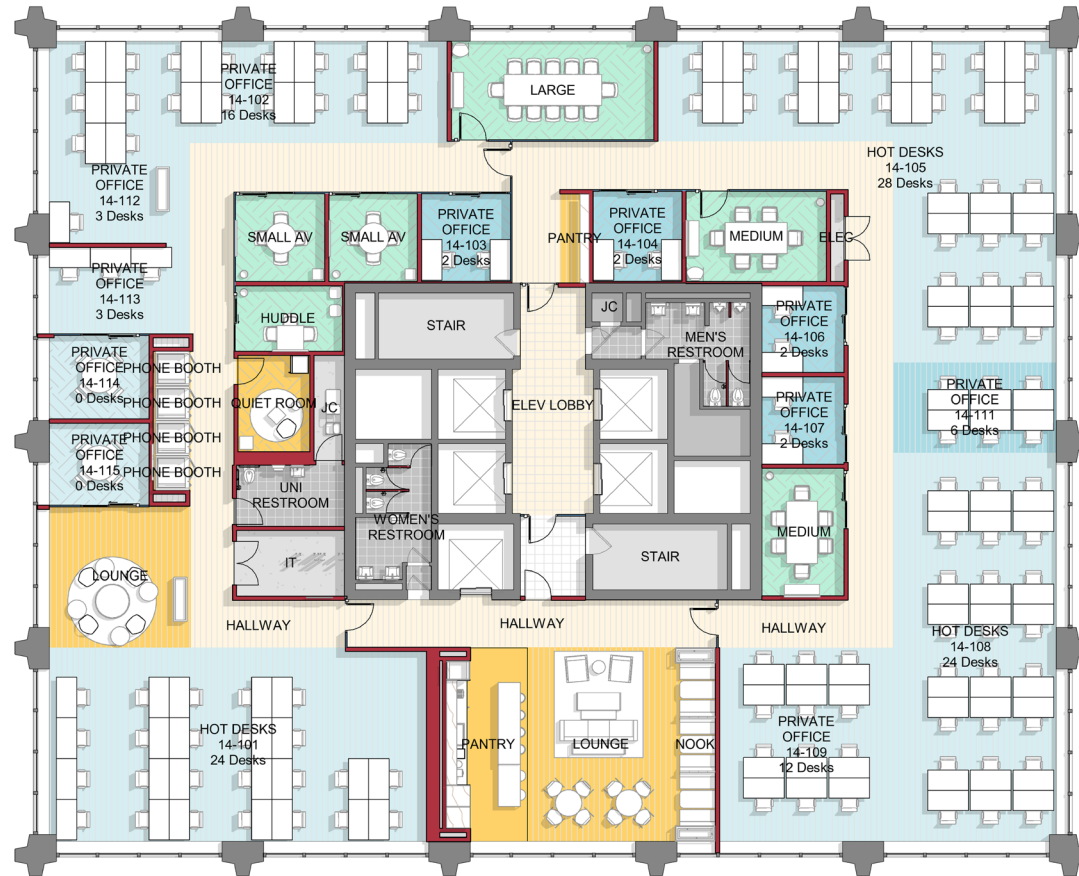


8  
MEETING ROOM(S)

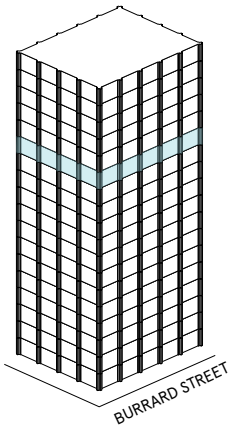
4  
PRIVATE OFFICE(S)

## LEGEND

- MEETING ROOM
- SHARED WORKSPACE
- DEDICATED SPACE



BURRARD STREET



# 14th Floor

10,784 RSF

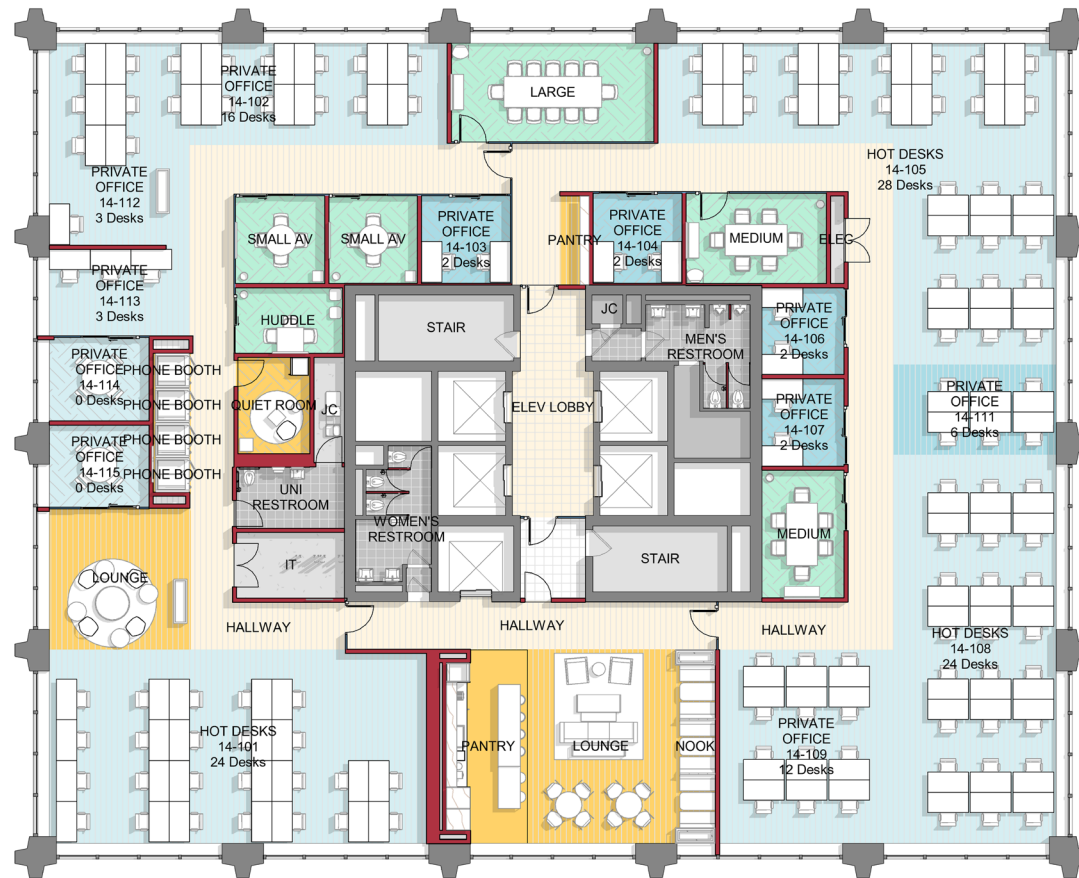
10,784 RSF Suite 14-100

8  
MEETING ROOM(S)

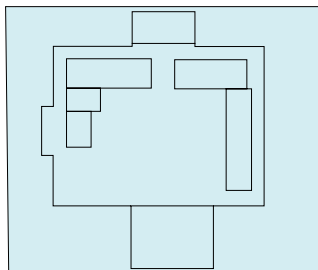
4  
PRIVATE OFFICE(S)

## LEGEND

 DEDICATED SPACE



BURRARD STREET



BURRARD STREET

# 16th Floor

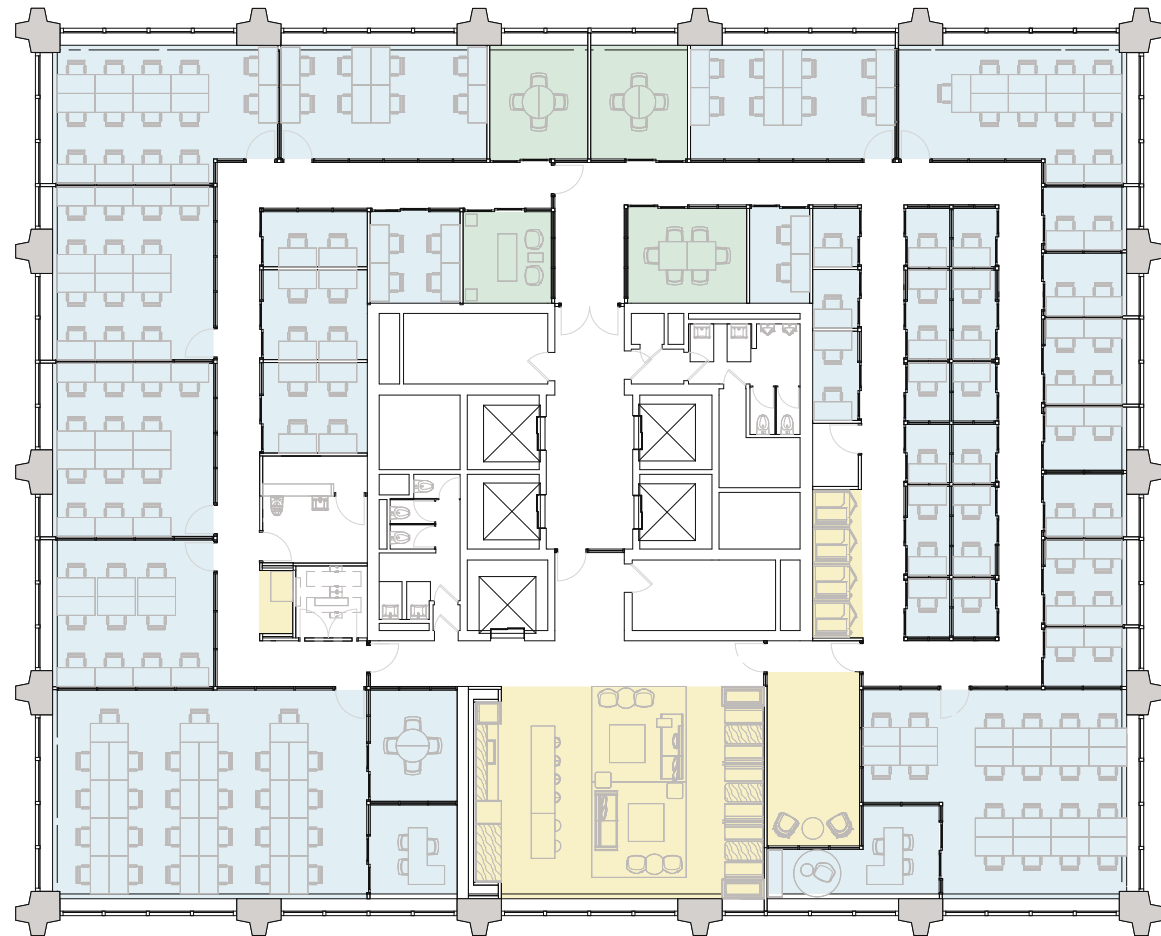
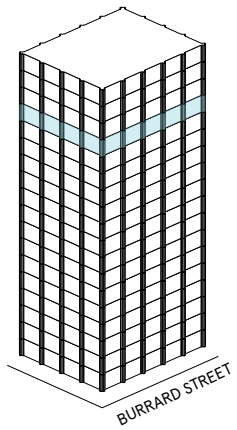
10,782 RSF

4  
MEETING ROOM(S)

4  
SHARED WORKSPACE(S)

## LEGEND

- MEETING ROOM
- SHARED WORKSPACE
- DEDICATED SPACE



BURRARD STREET



# 16th Floor

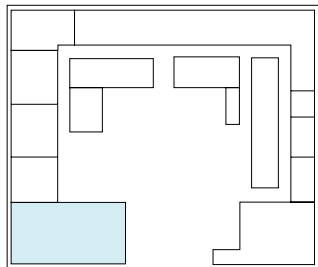
10,782 RSF

2,012 RSF Suite 16-101

- 1 MEETING ROOM(S)
- 1 PRIVATE OFFICE(S)



BURRARD STREET



BURRARD STREET

# Suite 16-101

## 16th Floor

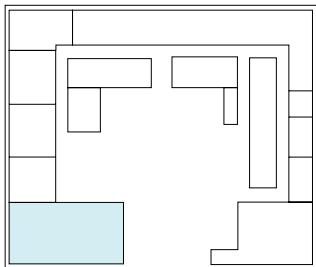
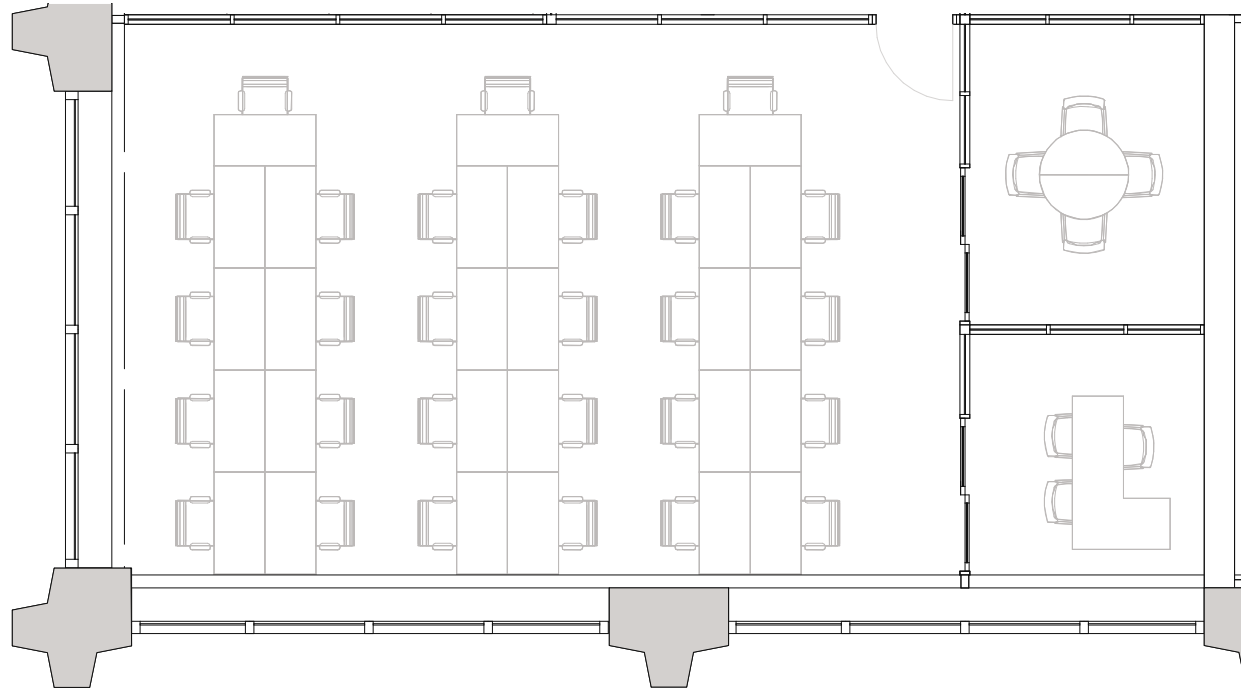
1

MEETING ROOM(S)

1

PRIVATE OFFICE(S)

2,012 RSF



BURRARD STREET

# 16th Floor

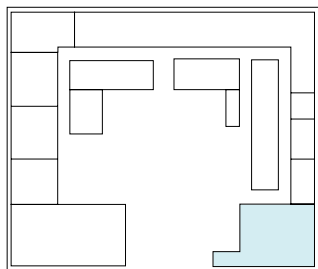
10,782 RSF

1,427 RSF Suite 16-136

1  
PRIVATE OFFICE(S)



BURRARD STREET



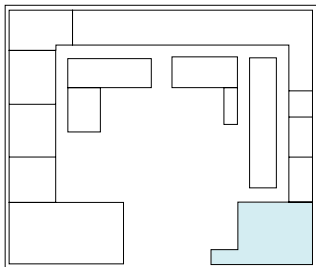
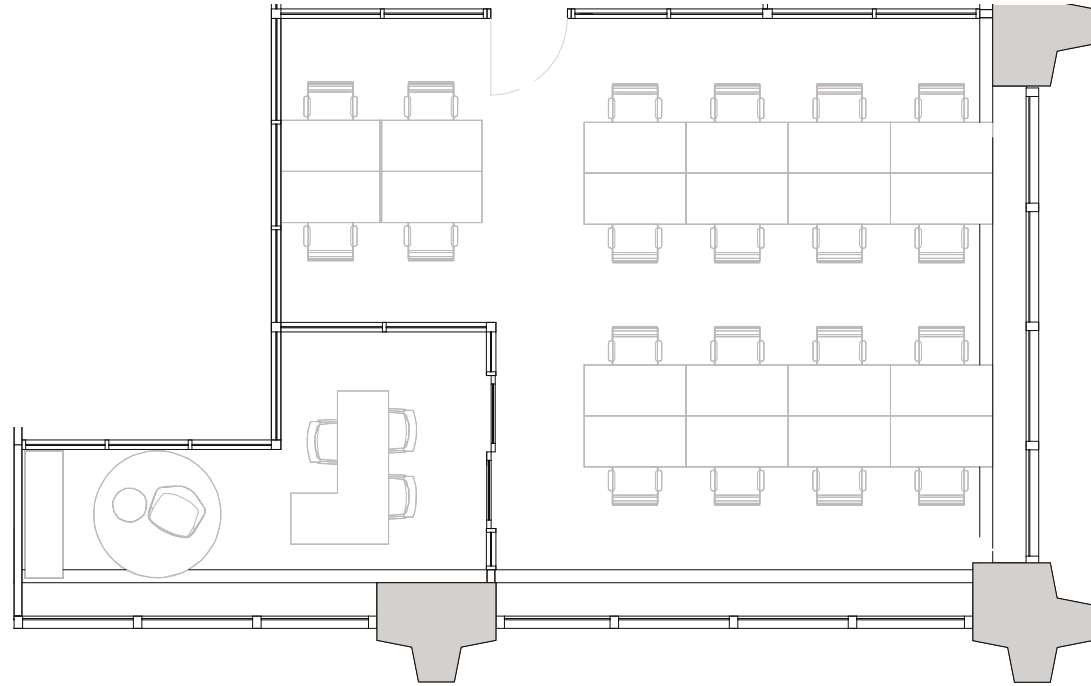
BURRARD STREET

# Suite 16-136

## 16th Floor

1  
PRIVATE OFFICE(S)

1,427 RSF  
RENTABLE AREA



BURRARD STREET