

1700-1770 OPDYKE COURT
UNIT #1710
AUBURN HILLS, MICHIGAN

HI-TECH FOR LEASE
14,386 Square Feet Available



**SIGNATURE
ASSOCIATES**
KNOW SIGNATURE | KNOW RESULTS

MEADOWBROOK TECHNICAL CENTER



PROPERTY FEATURES

- 14,386 square feet available
- 6,146 square feet office
- 18' clear height
- (1) 12' x 14' overhead door
- I-75 visibility and close to University Drive exit
- Space completely upgraded and rebuilt this year
- Zoned light industrial
- 800 amps, 240/480 volts power
- Lease Rate: \$10.95/sq. ft. NNN



For more information, please contact:

PAUL HOGE
(248) 948 0103
paulhoge@signatureassociates.com

JOE BANYAI
(248) 948 0108
jbanyai@signatureassociates.com

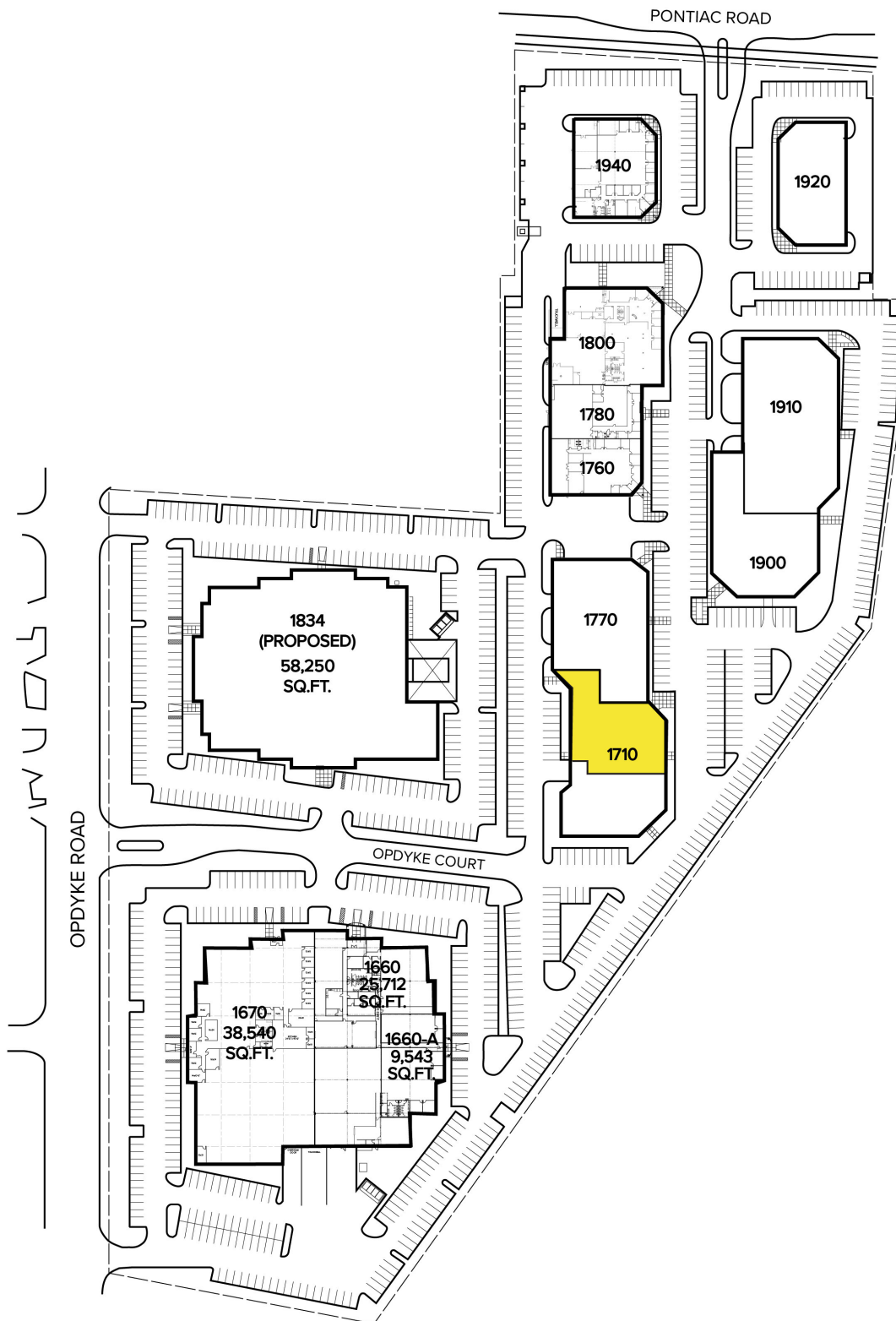
SIGNATURE ASSOCIATES
One Towne Square, Suite 1200
Southfield, MI 48076
www.signatureassociates.com

1700-1770 Opdyke Ct., Unit #1710 – Auburn Hills, MI

Hi-Tech For Lease

14,386
Square Feet
AVAILABLE

Site Plan



For more information, please contact:

PAUL HOGE
(248) 948 0103

paulhoge@signatureassociates.com

JOE BANYAI
(248) 948 0108

jbanyai@signatureassociates.com

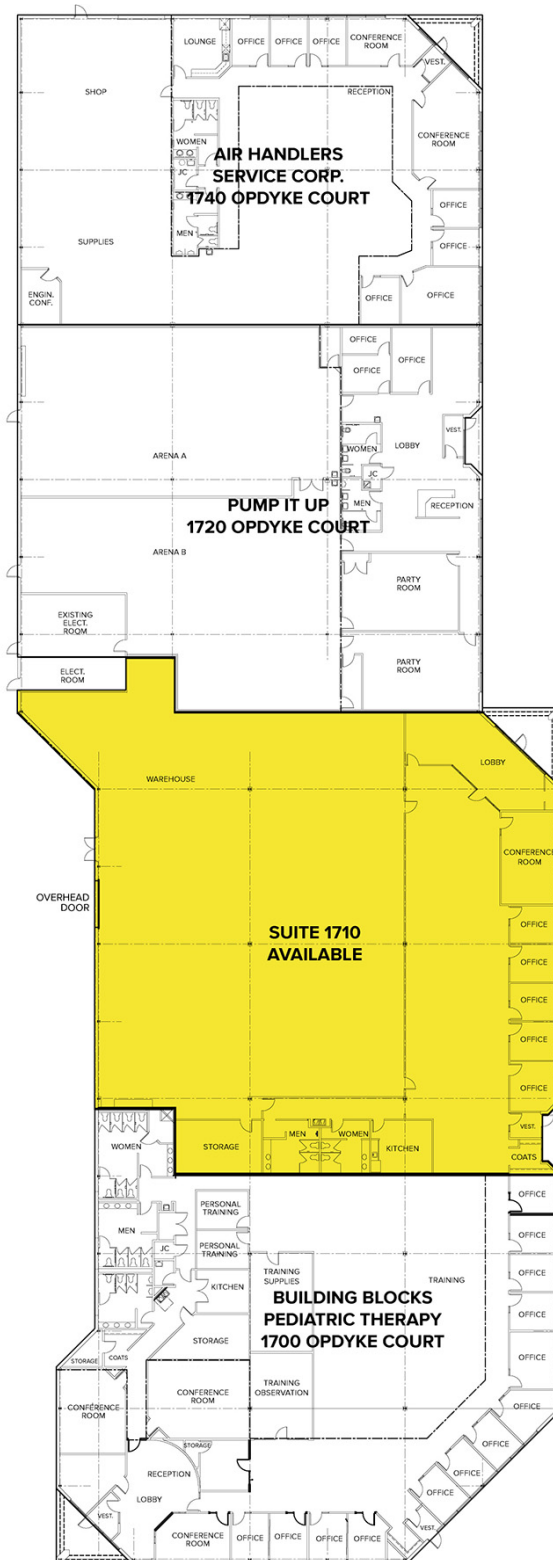
SIGNATURE ASSOCIATES
One Towne Square, Suite 1200
Southfield, MI 48076
www.signatureassociates.com

1700-1770 Opdyke Ct., Unit #1710 – Auburn Hills, MI

Hi-Tech For Lease

14,386
Square Feet
AVAILABLE

Floor Plan



For more information, please contact:

PAUL HOGE
(248) 948 0103
paulhoge@signatureassociates.com

JOE BANYAI
(248) 948 0108
jbanyai@signatureassociates.com

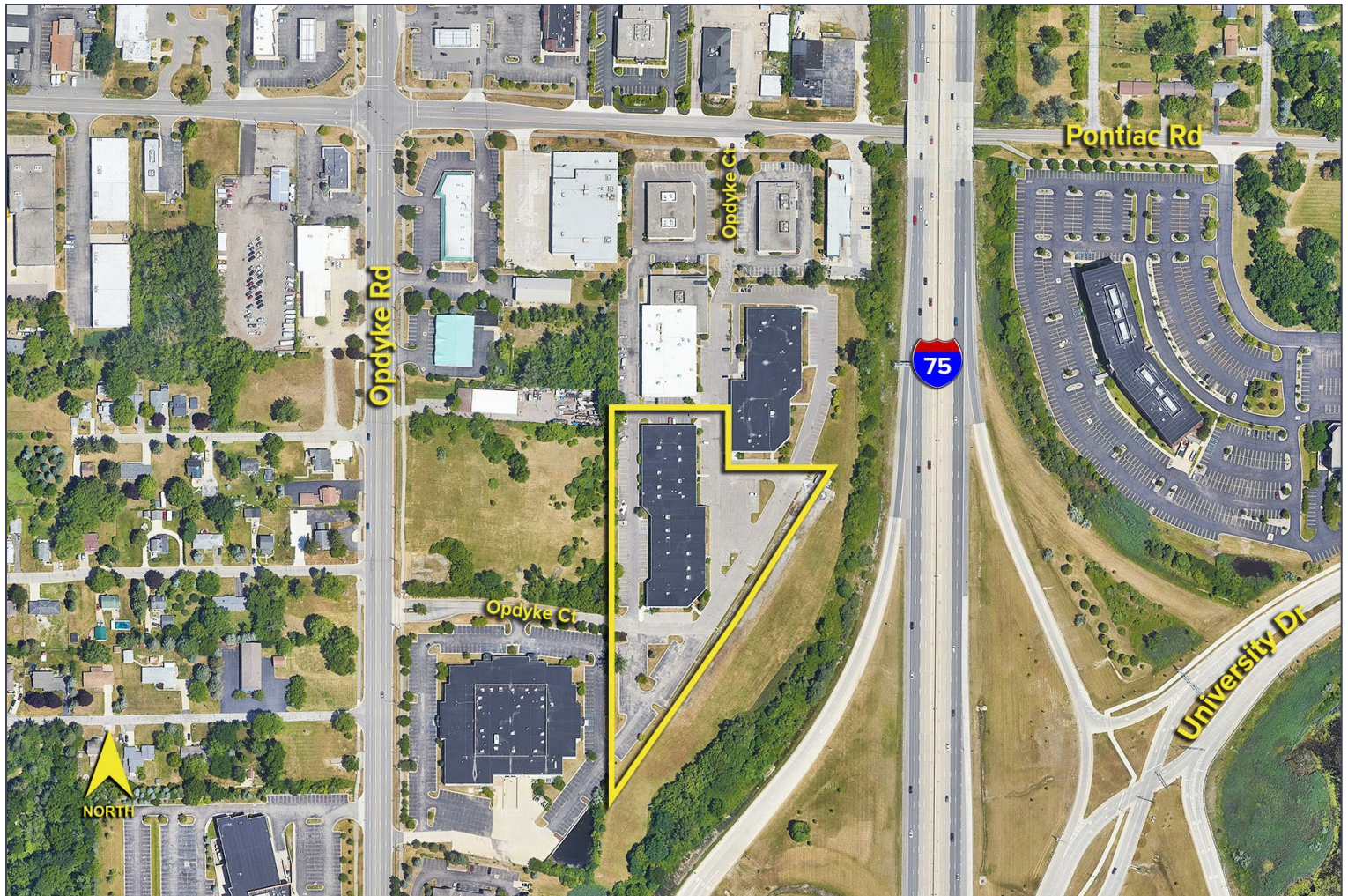
SIGNATURE ASSOCIATES
One Towne Square, Suite 1200
Southfield, MI 48076
www.signatureassociates.com

1700-1770 Opdyke Ct., Unit #1710 – Auburn Hills, MI

Hi-Tech For Lease

14,386
Square Feet
AVAILABLE

Aerial



For more information, please contact:

PAUL HOGE
(248) 948 0103
paulhoge@signatureassociates.com

JOE BANYAI
(248) 948 0108
jbanyai@signatureassociates.com

SIGNATURE ASSOCIATES
One Towne Square, Suite 1200
Southfield, MI 48076
www.signatureassociates.com