

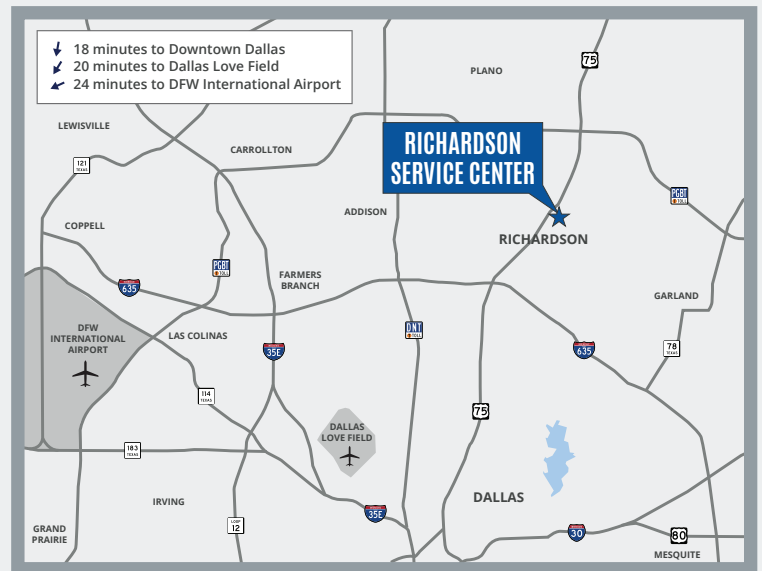
RICHARDSON SERVICE CENTER

870 North Dorothy Drive, Suite 712 | Richardson, Texas 75081



PROPERTY HIGHLIGHTS

- 24,700 SF Total
- 3,120 SF Available
- 16' Clear Height
- Parking Ratio: 12.15/1000 SF
- Year of Construction: 1983



CONTACT

Josh Barnes, SIOR
972.280.8353
jbarnes@holtlunsford.com

Weston Porter
214.442.8933
wporter@holtlunsford.com

The information is provided by sources deemed reliable, however, Holt Lunsford Commercial makes no guarantees, warranties or representations as to the completeness or accuracy thereof.

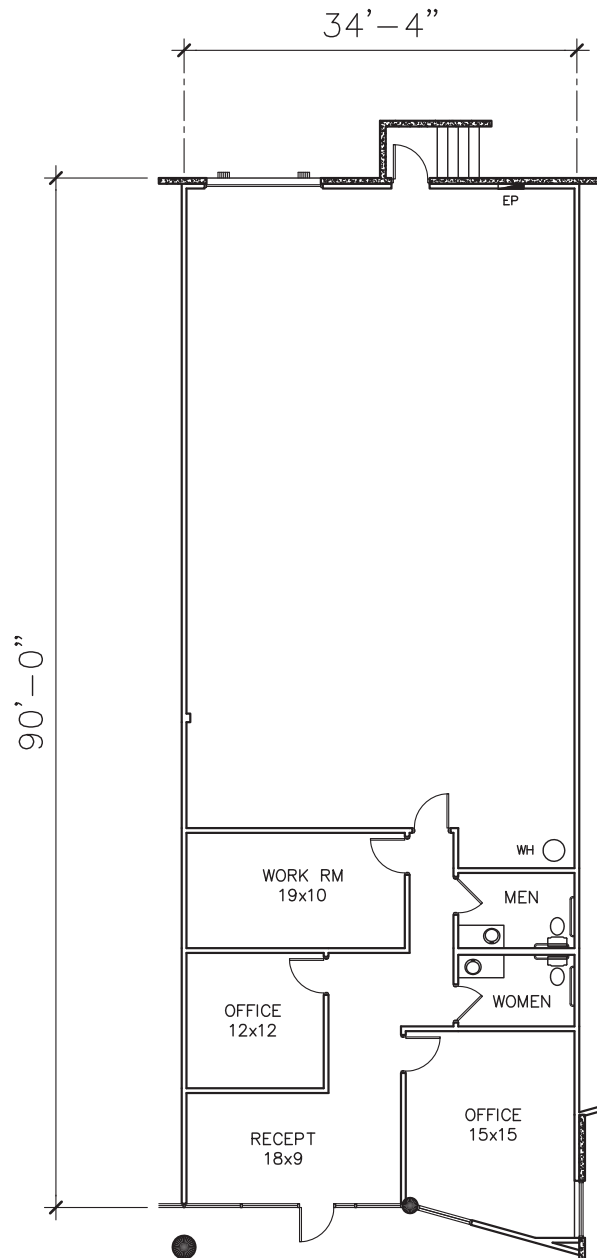
RICHARDSON SERVICE CENTER

870 North Dorothy Drive, Suite 712 | Richardson, Texas 75081

FLOOR PLAN

SUITE 712 HIGHLIGHTS

- 3,120 SF Available
- 750 SF Office
- One (1) Dock High Door
- 16' Clear Height



CONTACT

Josh Barnes, SIOR
972.280.8353

jbarnes@holtlunsford.com

Weston Porter
214.442.8933

wporter@holtlunsford.com

The information is provided by sources deemed reliable, however, Holt Lunsford Commercial makes no guarantees, warranties or representations as to the completeness or accuracy thereof.

