

OFFICE FOR SALE OR LEASE

IMMEDIATE OCCUPANCY



1075 W. ENTRANCE DRIVE

AUBURN HILLS, MI

For more information, contact:

JOHN BOYD

(248) 948 0102

jboyd@signatureassociates.com

DAVE MILLER

(248) 948 4183

dmiller@signatureassociates.com



**SIGNATURE
ASSOCIATES**

KNOW SIGNATURE | KNOW RESULTS

Information is subject to verification and no liability for errors or omissions is assumed. Price is subject to change and listing withdrawal.



PROPERTY SUMMARY



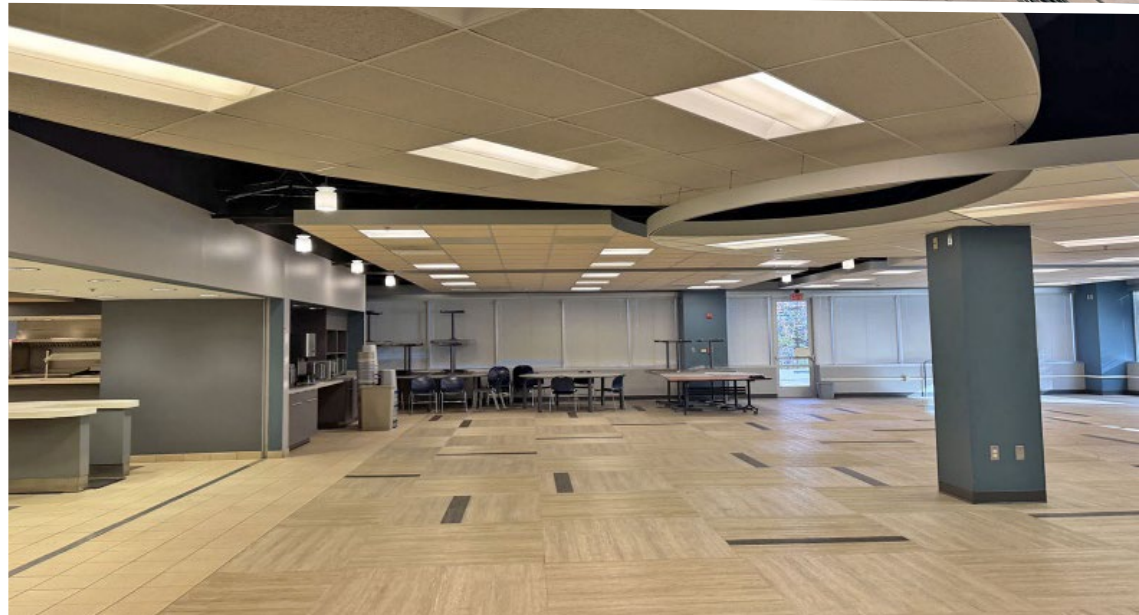
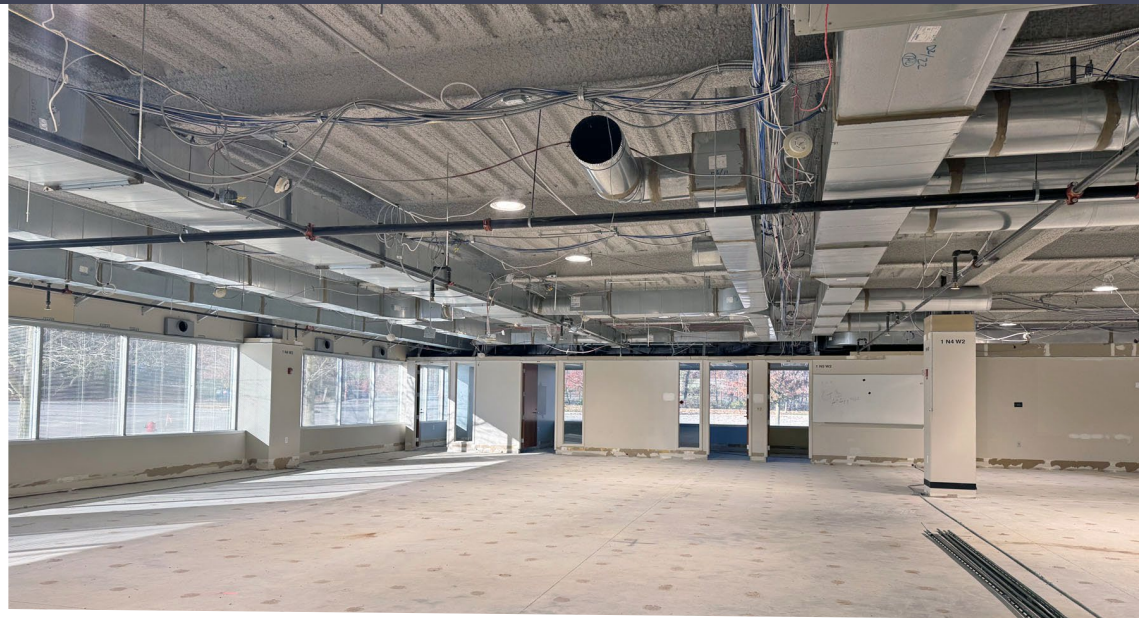
FOR SALE OR LEASE

*RARE, FREESTANDING
OFFICE/TECH BUILDING WITH
FOUR FLOORS IN PRIME
AUBURN HILLS LOCATION*

- 25,000 – 210,000 square feet available
- Will divide from 25,000 square feet – full floors available
- Available immediately
- Parking for 1,000+
- 3000 amps, 480 volts power
- Join FANUC, Comerica, VW, Oakland University and Oakland Community College
- Located on 14 acres
- Contact broker for pricing information



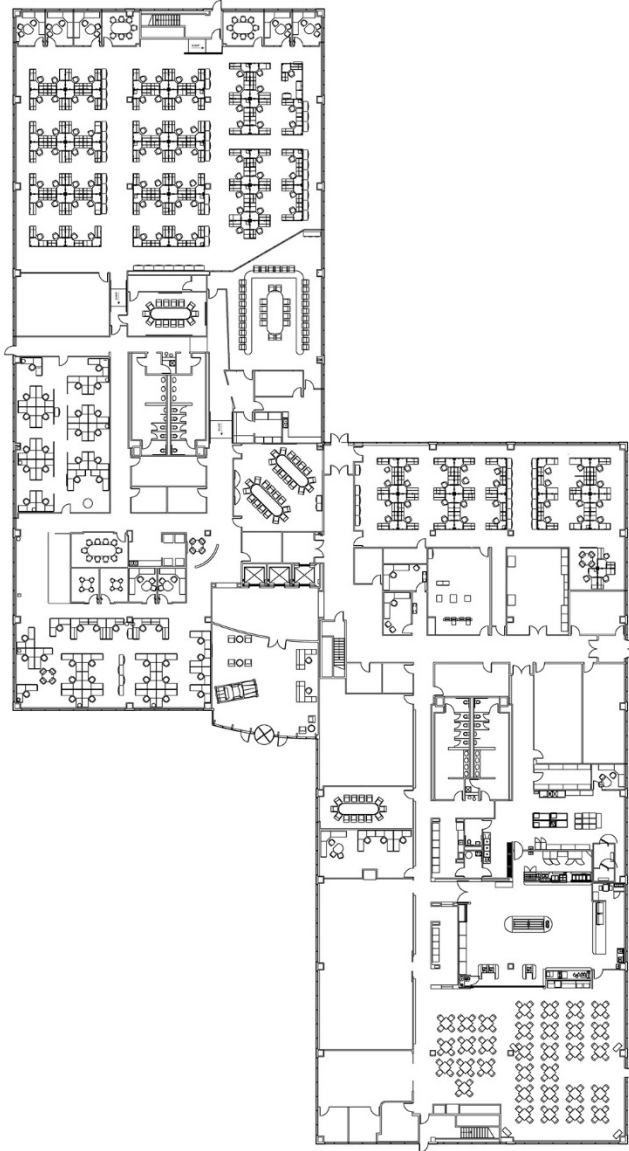
INTERIOR SPACES



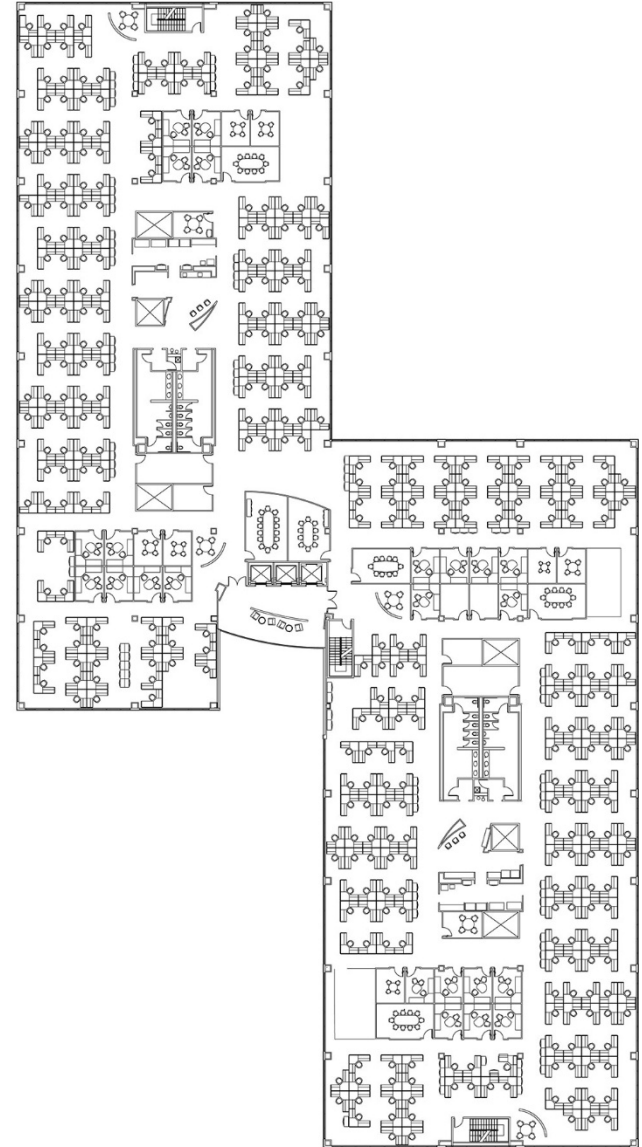


FLOOR PLANS

FIRST FLOOR



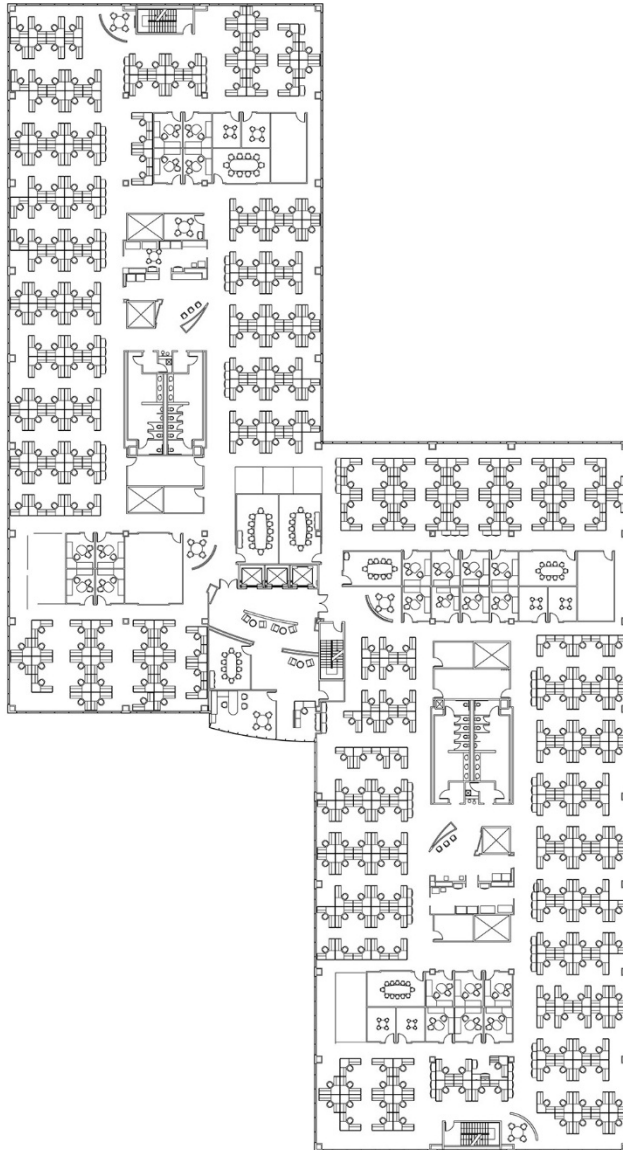
SECOND FLOOR



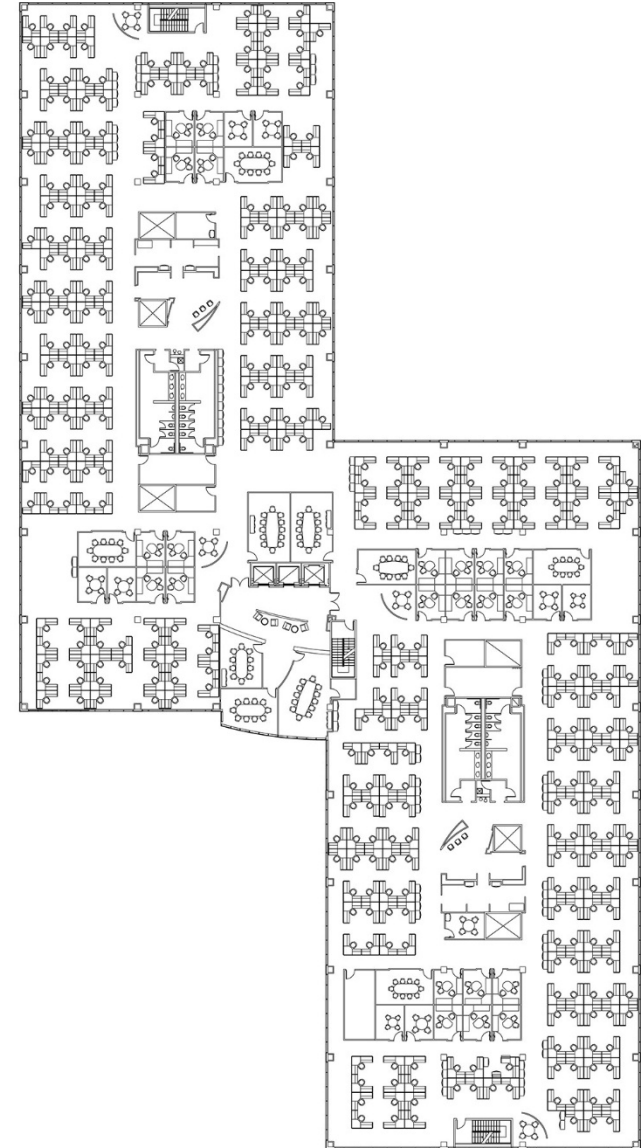


FLOOR PLANS

THIRD FLOOR



FOURTH FLOOR



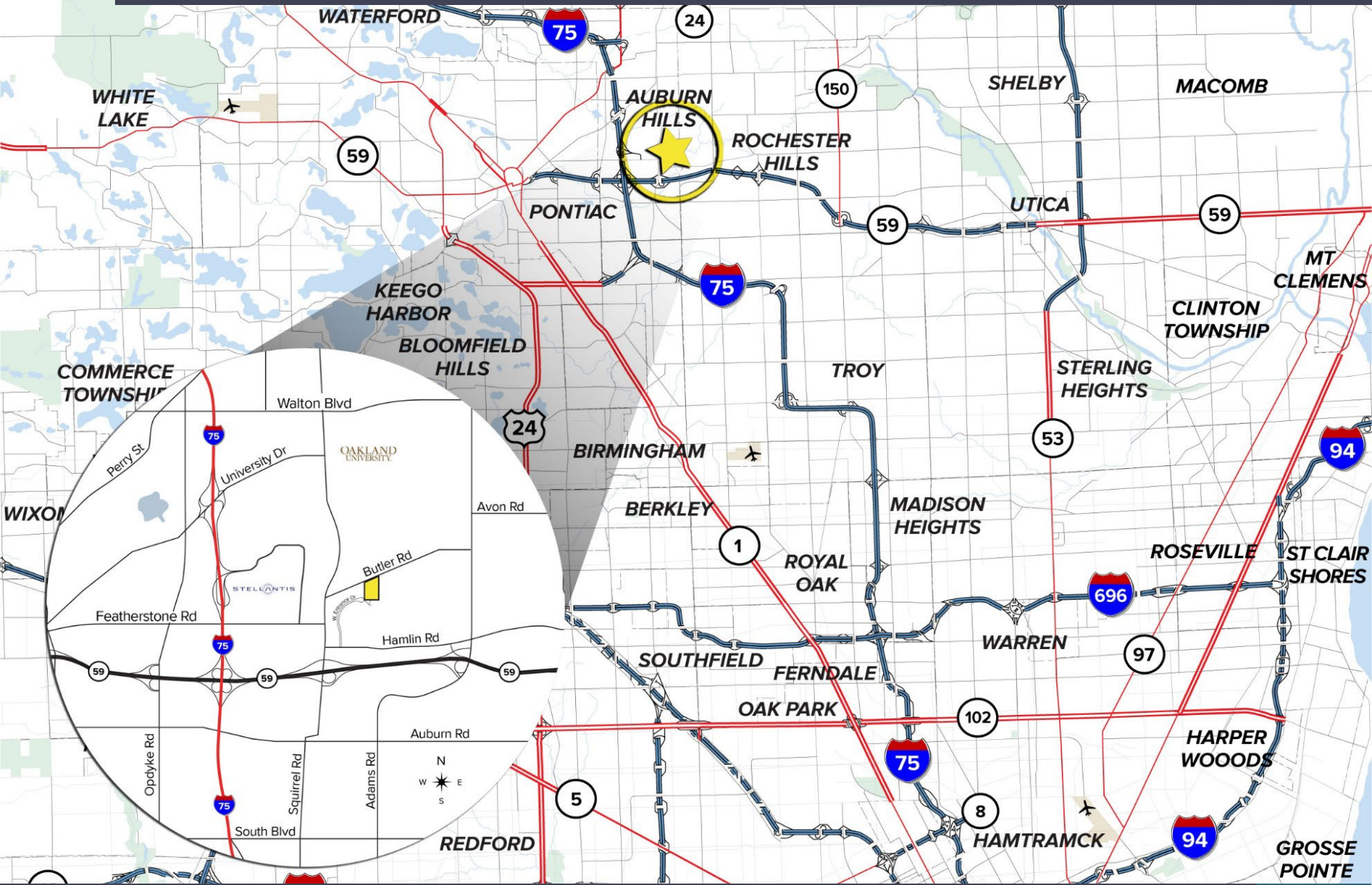


AERIAL VIEW





AREA MAP



For more information, contact:

JOHN BOYD

(248) 948 0102

jboyd@signatureassociates.com

DAVE MILLER

(248) 948 4183

dmiller@signatureassociates.com

BROKERAGE SERVICES

TENANT REPRESENTATION

INVESTMENT SALES

BUSINESS SALES

VALUATION

ADVISORY SERVICES

PROPERTY/ASSET MANAGEMENT

CONSULTING

MARKET RESEARCH

MARKETING

SIGNATURE ASSOCIATES

One Towne Square, Suite 1200

Southfield, Michigan 48076

(248) 948 9000

www.signatureassociates.com