

# FOR LEASE

248 HOMER AVE, PALO ALTO, CA

±4,600 SQ. FT. OFFICE BUILDING



**PREMIER  
PROPERTIES**  
COMMERCIAL  
REAL ESTATE

**BRAD EHIKIAN**  
Partner  
dre license #01736391  
| 650.618.3001  
| brad.ehikian@prprop.com

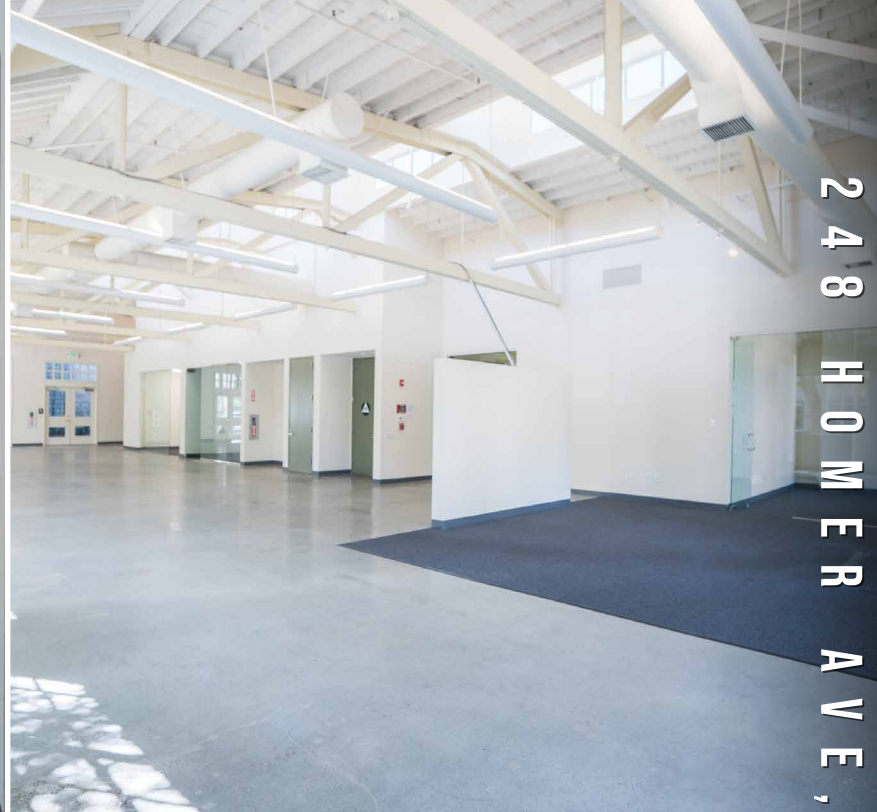
**JON GOLDMAN**  
Partner  
dre license #01295503  
| 650.618.3003  
| jon.goldman@prprop.com

**JESSE EBNER**  
Vice President  
dre license #02055989  
| 650.618.3017  
| jesse.ebner@prprop.com

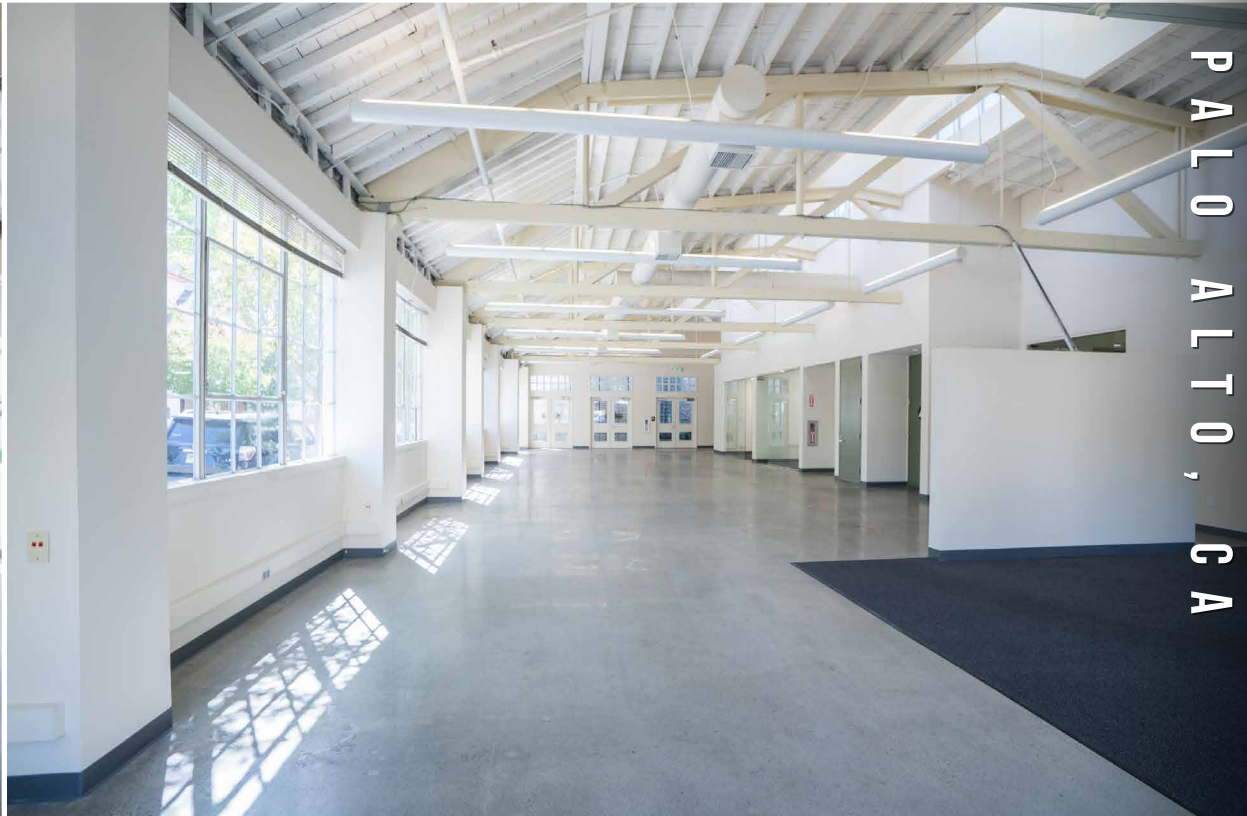
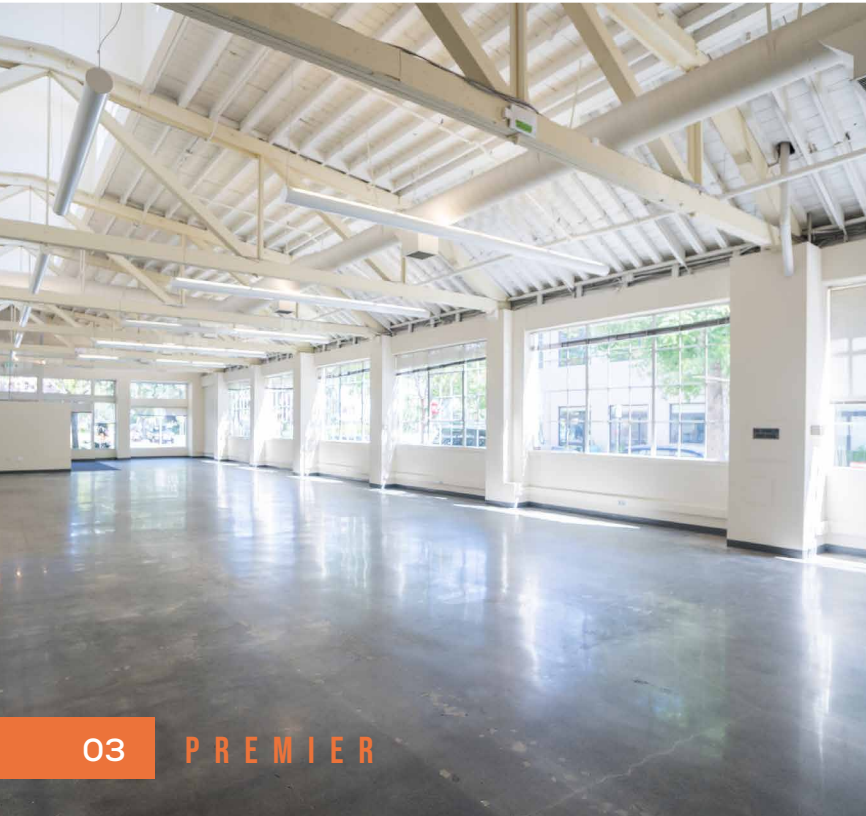
# PROPERTY HIGHLIGHTS

- ▀ ±4,600 Sq. Ft. Single Tenant Historic Office Building
- ▀ 5 Reserved Parking Spaces
- ▀ High Ceilings with Exposed Trusses
- ▀ Enormous Floor-to-Ceiling Windows Provide Abundant Natural Light
- ▀ Mostly Open Layout
- ▀ Polished Concrete Floors
- ▀ Private Courtyard Serves as Outdoor Lunch Area
- ▀ Large Kitchenette / Break Area
- ▀ Surrounded by Downtown Restaurants & Amenities
- ▀ Walking Distance to CalTrain Station
- ▀ Available September 1, 2026

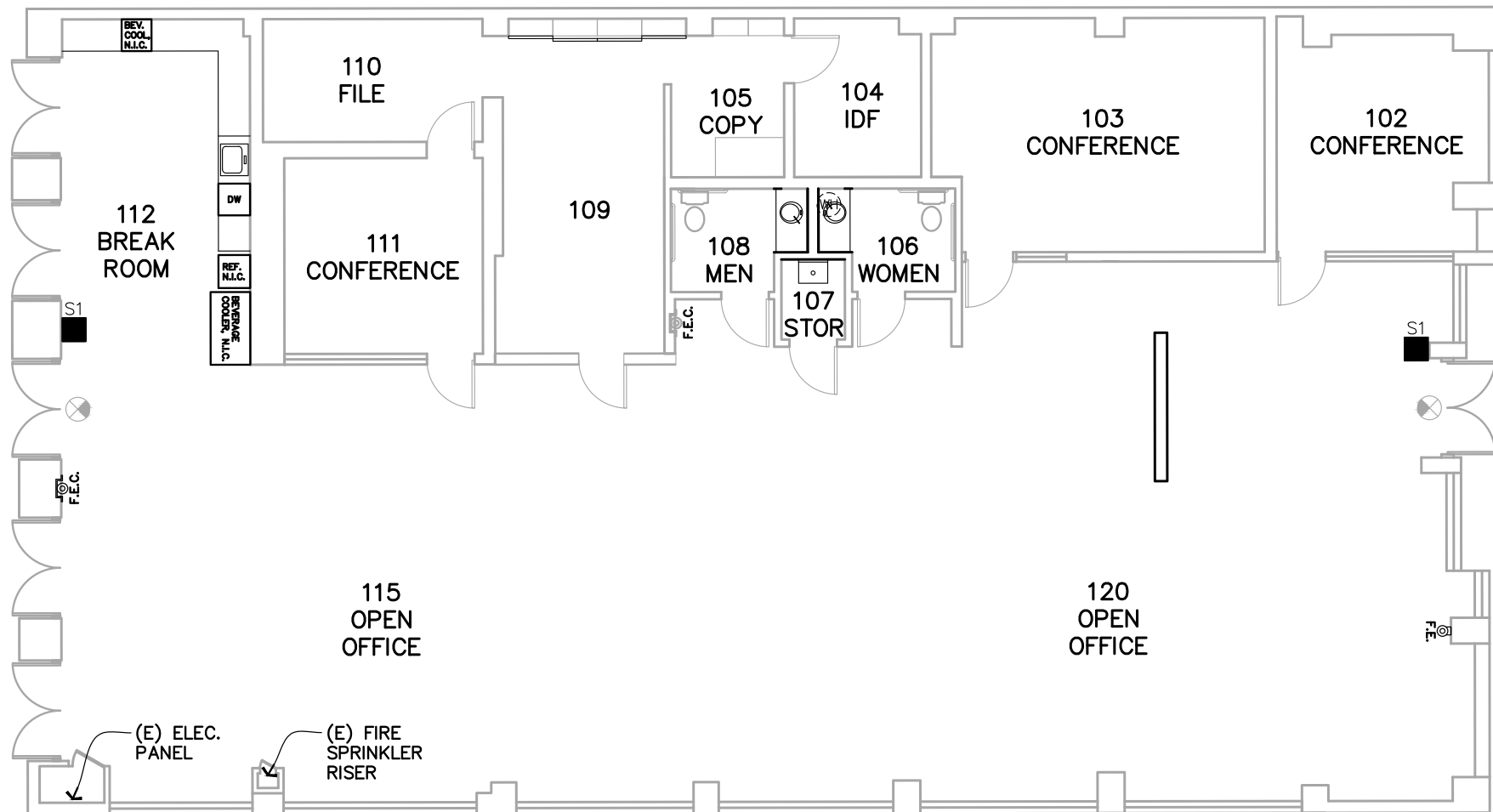
248 HOMER AVE, PALO ALTO, CA



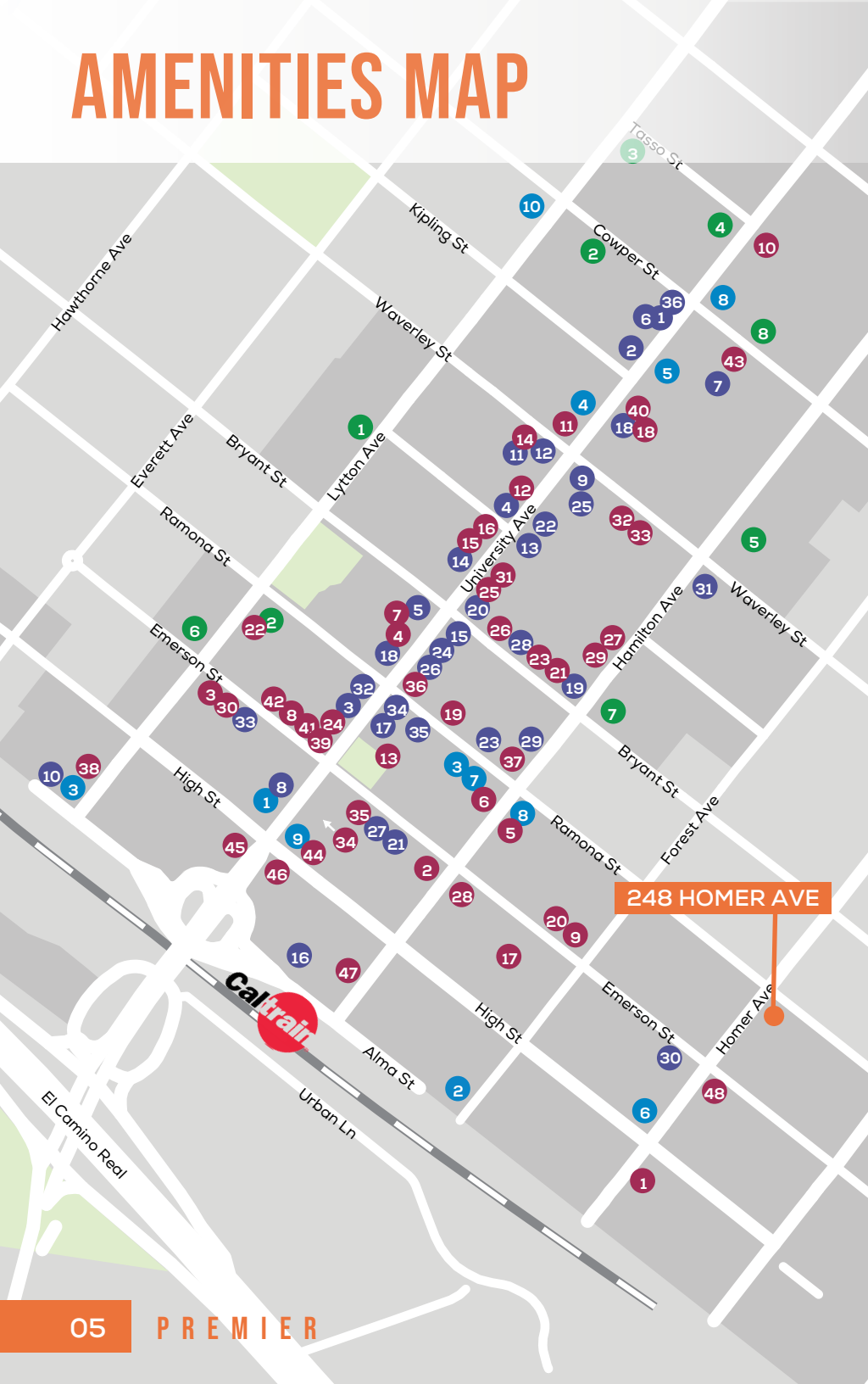
248 HOMER AVE,  
PALO ALTO, CA



# FLOOR PLAN



# AMENITIES MAP



## SHOPPING / SERVICES

- 1 AT&T Store
- 2 Footwear Etc
- 3 Verizon
- 4 Design Within Reach
- 5 Miniso
- 6 Cielo
- 7 el PRADO Hotel
- 8 Palo Alto Bicycles
- 9 Chico's
- 10 E-bike Annex
- 11 Visual Comfort & Co
- 12 The RealReal
- 13 Apple Store
- 14 Brandy Melville
- 15 Keen Garage
- 16 Patagonia
- 17 Fjallraven
- 18 Arnoldi Jewelers
- 19 UPS Store
- 20 Artsy Rugs
- 21 Bells Books
- 22 CVS
- 23 Warby Parker
- 24 Lenscrafters
- 25 Avocado Green Mattress
- 26 The Shade Store
- 27 Mac's Smoke Shop
- 28 Timothy Adams
- 29 Scandia Home
- 30 Whole Foods
- 31 US Postal Service
- 32 Stanford Theatre
- 33 Aquarius Theatre
- 34 Juut Salon
- 35 Mansoor Fine Jewelers
- 36 Solidcore

## RESTAURANTS

- 1 St Michael's Alley
- 2 Palo Alto Creamery
- 3 Evvia
- 4 Orens Hummus
- 5 Reposado
- 6 Osteria Toscana
- 7 Local Union
- 8 Rangoon Ruby
- 9 Pizzeria Delfina
- 10 Tamarine
- 11 Yayoi Palo Alto
- 12 Crepevine
- 13 Pizza My Heart
- 14 Marugame Udon
- 15 Bevri
- 16 Khazana by Chef Sanjeev Kapoor
- 17 Tacolicious
- 18 SOMSOMI
- 19 Nola
- 20 Buca di Beppo
- 21 Zola
- 22 Macarena
- 23 Ramen Nagi
- 24 Steam
- 25 Curry Pizza House
- 26 Son & Garden
- 27 New York Pizza
- 28 Nobu
- 29 Curry Up Now
- 30 The Patio
- 31 La Corneta Taqueria
- 32 Ethel's Fancy
- 33 Tai Pan
- 34 Sprout Café
- 35 Bare Bowls
- 36 Salt and Straw
- 37 sweetgreen
- 38 Darbar Indian Cuisine
- 39 Scoop
- 40 Sushirrito
- 41 Tane Vegan Izakaya
- 42 Gelato Classico
- 43 Il Fornaio
- 44 Sweet Maple
- 45 New York New York Sandwiches
- 46 Arya Steakhouse
- 47 San Agus Cocina Urbana
- 48 Taverna

## BANKS

- 1 Heritage Bank of Commerce
- 2 Comerica Bank
- 3 Bank of America
- 4 Stanford Credit Union
- 5 Wells Fargo
- 6 City National Bank
- 7 Chase Bank
- 8 Bank of The West

## COFFEE

- 1 Starbucks
- 2 Philz Coffee
- 3 Coupa Cafe
- 4 Café Venetia
- 5 Blue Bottle Café
- 6 Peets
- 7 Bistro Maxine
- 8 Joe & the Juice
- 9 Verve
- 10 Mademoiselle Colette

248 HOMER AVE, PALO ALTO, GA

# TRANSPORTATION MAP

Downtown San Francisco →

 **PLANES**

SJC - 16 miles  
SFO - 19 miles  
OAK - 28 miles

 **TRAINS**

San Francisco - 58 min  
Milbrae - 37 min  
San Jose - 17 min

 **AUTOMOBILES**

San Francisco - 38 miles  
Downtown San Jose - 19 miles  
Downtown Oakland - 34 miles



(122,000 VPD)



Downtown Redwood City

Stanford Medical Center

Stanford Shopping Center

**Caltrain**  
Downtown Menlo Park

Sand Hill Rd (31,468 VPD)

El Camino Real (37,300 VPD)  
Caltrain Rail Line

Downtown Palo Alto

Palm Dr

**Caltrain**  
Downtown Palo Alto

248 HOMER AVE

University Ave (18,700 VPD)

# FOR LEASE

248 HOMER AVE, PALO ALTO, CA

±4,600 SQ. FT. OFFICE BUILDING



**PREMIER  
PROPERTIES**  
COMMERCIAL  
REAL ESTATE

## BRAD EHIKIAN

Partner  
dre license #01736391  
| 650.618.3001  
| brad.ehikian@prprop.com

## JON GOLDMAN

Partner  
dre license #01295503  
| 650.618.3003  
| jon.goldman@prprop.com

## JESSE EBNER

Vice President  
dre license #02055989  
| 650.618.3017  
| jesse.ebner@prprop.com