



**TRAILER  
PARKING  
AVAILABLE**

**\$495 PER TRAILER  
PER MONTH**

## EXPERIOR SCHAUMBURG LOGISTICS CENTER

1001 W IRVING PARK ROAD | Schaumburg, Illinois 60193

### PROPERTY HIGHLIGHTS

Welcome to Phase 1 of the Experior Schaumburg Logistics Center. Trailer parking is currently available to the public at \$495 per trailer per month. Phase 2 is slated to begin in Q2, 2025 and will include fueling, fleet maintenance, office/dispatch space, warehousing/transloading and other retail amenities.



635 TRUCK  
PARKING SPOTS



PHASE 2  
2025 CONSTRUCTION



QUICK ACCESS TO  
390 INTERCHANGE



± 4.8 MILES TO  
HIGHWAY I-290



12 MINUTES TO  
O'HARE AIRPORT

### Contact

David Haigh, CCIM  
+1 630 693 0649  
dhaigh@hiffman.com

Nick Feczko  
+1 630 693 0668  
nfezko@hiffman.com

One Oakbrook Terrace  
Suite 400  
Oakbrook Terrace, Illinois 60181  
+1 630 932 1234

NO WARRANTY OR REPRESENTATION, EXPRESS OR IMPLIED, IS MADE AS TO THE ACCURACY OF THE INFORMATION CONTAINED HEREIN, AND THE SAME IS SUBMITTED SUBJECT TO ERRORS, OMISSIONS, CHANGE OF PRICE, RENTAL OR OTHER CONDITIONS, PRIOR SALE, LEASE OR FINANCING, OR WITHDRAWAL WITHOUT NOTICE, AND OF ANY SPECIAL LISTING CONDITIONS IMPOSED BY OUR PRINCIPALS NO WARRANTIES OR REPRESENTATIONS ARE MADE AS TO THE CONDITION OF THE PROPERTY OR ANY HAZARDS CONTAINED THEREIN ARE ANY TO BE IMPLIED.

## EXPERIOR SCHAUMBURG LOGISTICS CENTER

Welcome to Phase 1 of the Experior Schaumburg Logistics Center. Trailer parking is currently available to the public at \$495 per trailer per month. Phase 2 is slated to begin in Q2, 2025 and will include fueling, fleet maintenance, office/dispatch space, warehousing/transloading and other retail amenities.





PARKING LOT  
COMPLETED

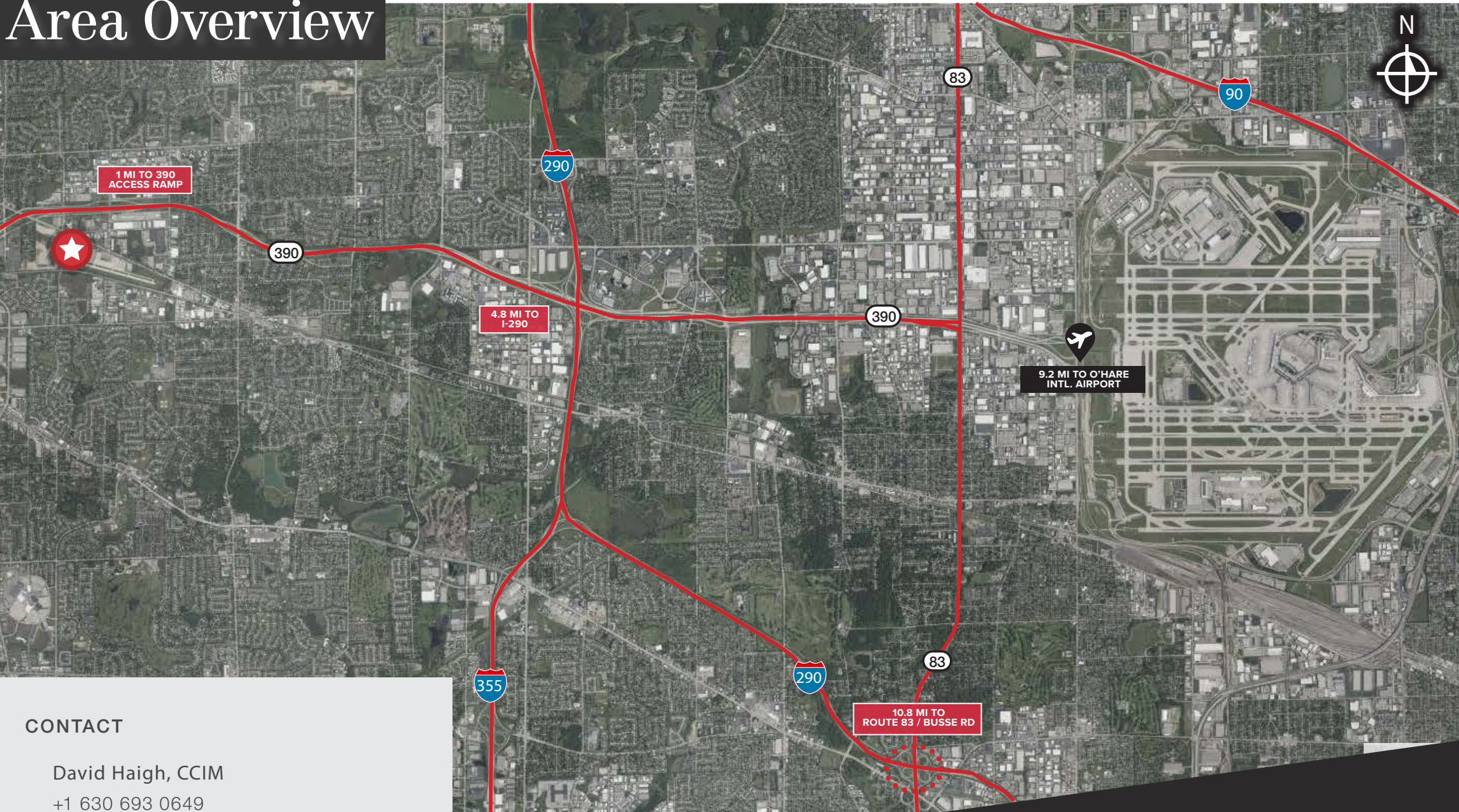
---

2024

\$495 PER TRAILER PER MONTH



# Area Overview



## CONTACT

David Haigh, CCIM  
+1 630 693 0649  
dhaigh@hiffman.com

Nick Feczko  
+1 630 693 0668  
nfezko@hiffman.com

One Oakbrook Terrace  
Suite 400  
Oakbrook Terrace, Illinois 60181  
+1 630 932 1234