

Shop 5/89 Goodwood Road, Goodwood

## Office Retail for Lease

Office Retail opportunity in Goodwood, located on a high exposure corner at 89 Goodwood Rd Goodwood, adjacent Tram stop 3 Goodwood.

Offers:

- 40sqm area
- Kitchen facilities
- Two areas
- Dry Cellar
- Split System Air conditioning

in a group of 8 specialty shops with great mix of tenancies.  
Terms negotiable.

Contact Ralph Pacillo 0433 117 801 to arrange a private inspection.

Disclaimer:

Information and imagery which is believed to be accurate based on 3rd party sources and inspections of the property before or at the time of advertising. Prospective tenants or other parties should make their own enquiries about the validity and accuracy of this information and view the property before making any leasing decisions.

RLA 215339

**FOR LEASE**

Contact Agent

**BUILDING AREA**

40sqm

**AGENTS**

Ralph Pacillo  
0433 117 801  
ralph@ljhfp.com.au

**AGENCY**

LJ Hooker Flinders Park  
(08) 8352 1155

All information contained therein is gathered from relevant third parties sources.  
We cannot guarantee or give any warranty about the information provided.  
Interested parties must rely solely on their own enquiries.

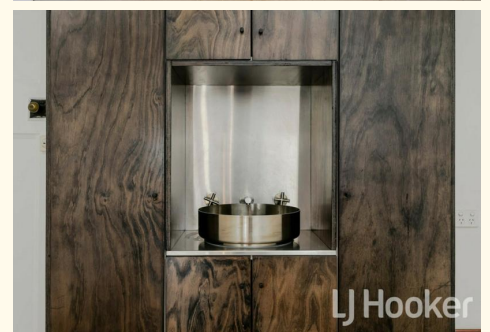
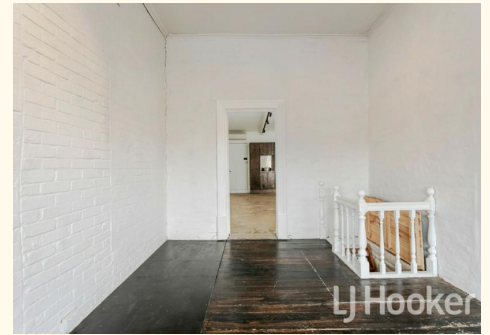
 **LJ Hooker**

## MORE DETAILS

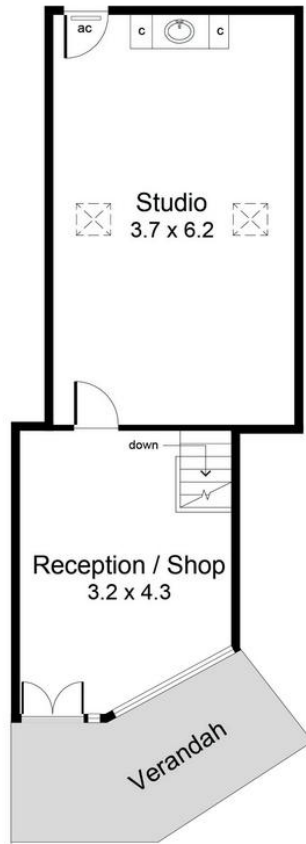
Property ID JQSH67  
Property Type Retail  
Offices  
Building Area 40 m2

**Ralph Pacillo 0433 117 801**  
Licensee | [ralph@ljhfp.com.au](mailto:ralph@ljhfp.com.au)

**LJ Hooker Flinders Park (08) 8352 1155**  
Suite 2/166-168 Grange Road, FLINDERS PARK SA 5025  
[flinderspark.ljhooker.com.au](http://flinderspark.ljhooker.com.au) | [flinderspark@ljhfp.com.au](mailto:flinderspark@ljhfp.com.au)



All information contained therein is gathered from relevant third parties sources.  
We cannot guarantee or give any warranty about the information provided.  
Interested parties must rely solely on their own enquiries.



Upper Level



Lower Level



Area (Estimate only)	
Upper Level	39.5 m <sup>2</sup>
Lower Level	13.0 m <sup>2</sup>
Verandah	7.0 m <sup>2</sup>
<b>Total</b>	<b>59.5 m<sup>2</sup></b>

For illustrative purposes only.  
All measurements are approximate