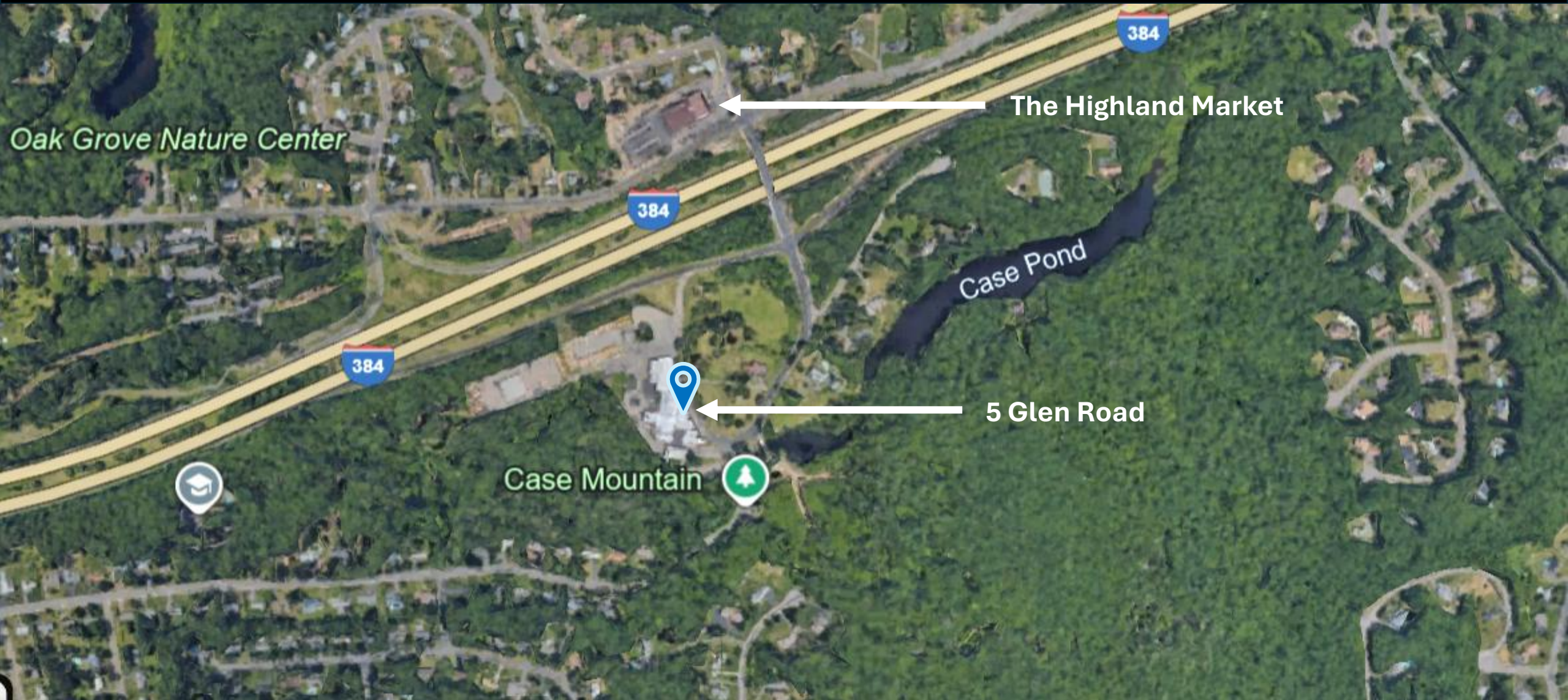


The Loft Offices at Case Mountain

5 Glen Road
Manchester, CT



Location



Overview

Available Spaces

Unit	Size	Possession	Term	Price
Unit A	2,295 RSF	Immediate - arranged	5-10 Years	Upon request
Unit B	4,041 RSF	Immediate - arranged	5-10 Years	Upon request
Unit C	6,174 RSF	Immediate - arranged	5-10 Years	Upon request

Amenities

Directly next to the walking trails of Case Mountain and with close proximity to the Highland Market

Location

Direct Access to Route 384

Floor Plans

Floor Plans can be found on the following pages.

Case Mountain

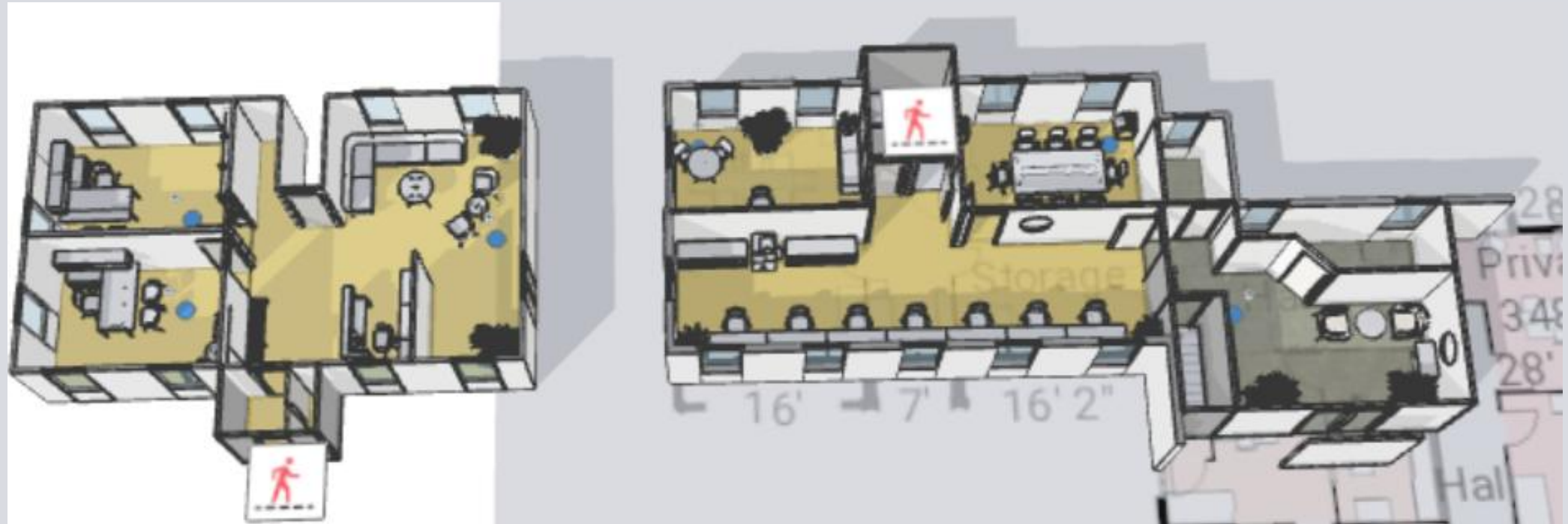
Direct access to Case Mountain provides a unique quality of life office opportunity in Manchester, CT



UNIT A: First and Second Floor

Total RSF = 2,295 RSF

Virtual Tour



UNIT B: Second Floor

Total RSF = 4,041 RSF

Virtual Tour



UNIT C: Second Floor

Total RSF = 6,174 RSF

Virtual Tour

