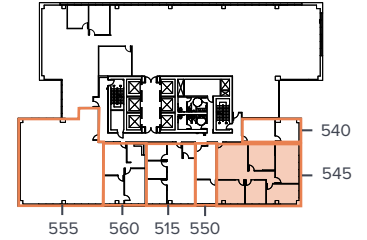




4041 N. Central Ave. Phoenix  
4041ncentral.colliers.com

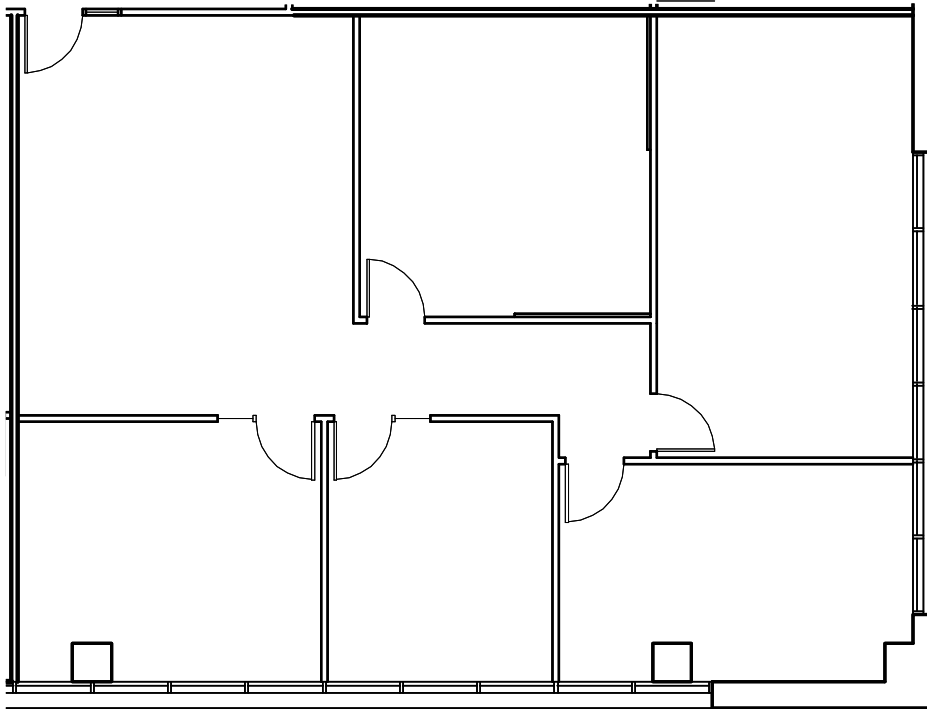


## TOWER

# SUITE 545

±1,938 RSF

Contiguous to ±39,353 RSF with  
Suites 300, 400, 515, 540, 555,  
and 560



*Let's  
Talk*

TODD NOEL, CCIM  
Vice Chairman  
DIR +1 602 222 5190  
todd.noel@colliers.com

MATT BANISZEWSKI  
Vice President  
DIR +1 602 222 5176  
matt.baniszewski@colliers.com

COLLIERS  
2390 E Camelback Rd., Ste. 100  
+1 602 222 5000  
colliers.com/arizona



This document has been prepared by Colliers for advertising and general information only. Colliers makes no guarantees, representations or warranties of any kind, expressed or implied, regarding the information including, but not limited to, warranties of content, accuracy and reliability. Any interested party should undertake their own inquiries as to the accuracy of the information. Colliers excludes unequivocally all inferred or implied terms, conditions and warranties arising out of this document and excludes all liability for loss and damages arising there from. This publication is the copyrighted property of Colliers and/or its licensor(s). © 2025. All rights reserved. This communication is not intended to cause or induce breach of an existing listing agreement. Colliers International AZ, LLC.