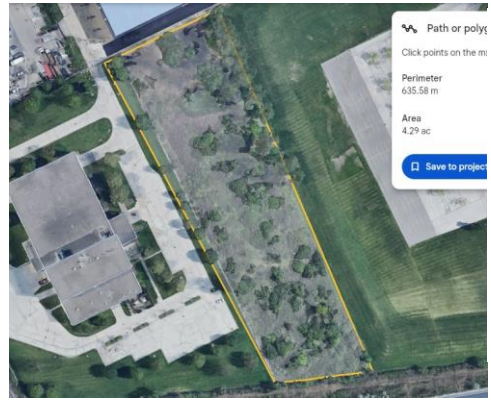


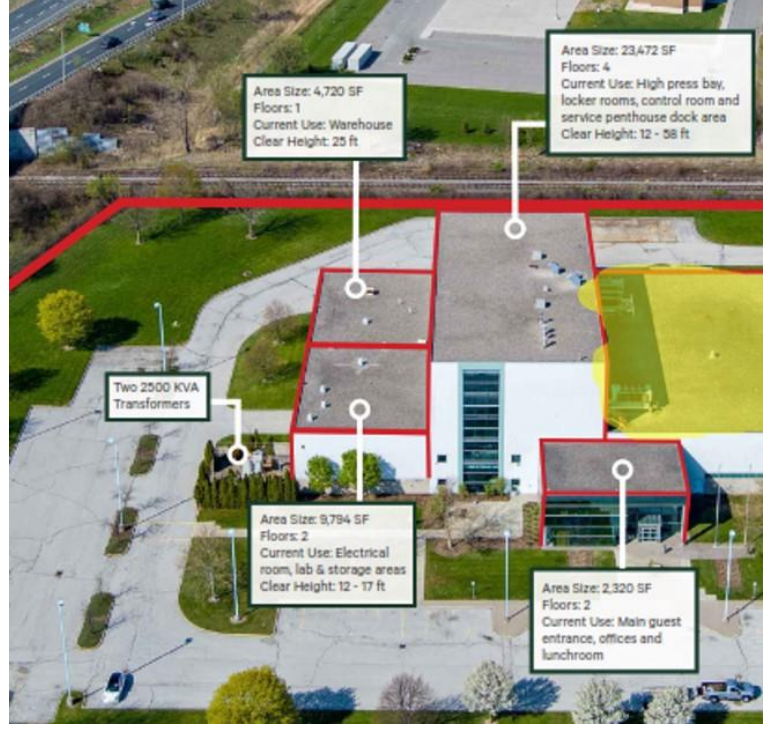
LAND AND OFFICE

AVAILABLE NOW

Lower Office Area
Area 3 - 58'x 40' = 2,320 sq. ft
Upper Office Area
Area 4 - 1,500 sq. ft.
Total Office Space = 3,820 sq. ft.



4.29 Acres in total
3.5 Acres Rentable



Anuj Sood

519-259-1488

Sasha Dhillon

519-946-3696
