

# Elkhart Building Specifications



- 250'x120' building split into (20) 25'x60' spaces
- Exposed fastener walls and roof
- 16' clear height, 20' peak
- Each unit has a man door and a 14'x14' overhead door
- Window next to each man door
- 100 amp, 3 phase power
- Floor drain
- Hose bib
- Full insulation
- Heated (A/C optional)
- Full sprinkler system
- Rough-ins for half bathroom
- 3 overhead LED lights per 1,500 SF unit
- Conduit box for additional lighting, fans, etc.
- Individually metered



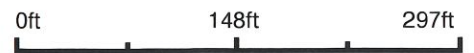
# Topography Hillshade 157



©2024 AgriData, Inc.



Source: USGS 1 meter dem  
 Interval(ft): 2  
 Min: 983.6  
 Max: 996.7  
 Range: 13.1  
 Average: 989.3  
 Standard Deviation: 2.76 ft



**28-81N-23W**  
**Polk County**  
**Iowa**

Boundary Center: 41° 47' 30.71, -93° 32' 15.64



© AgriData, Inc. 2023 www.AgriDataInc.com

Field borders provided by Farm Service Agency as of 5/21/2008.