



FINEBERG & ASSOCIATES
COMMERCIAL REAL ESTATE

104 S Main Street Bentonville, AR 72712

ARKREALESTATE.COM



1271 TULIP ST



240 CISTERNA



1011 SILVERTHORNE



1131 TULIP ST

4 OCCUPIED RESIDENTIAL HOMES - CENTERTON, AR

Discover a rare investment opportunity in one of Northwest Arkansas' fastest-growing areas! This exclusive package includes four well-maintained residential homes located in Centerton, AR 72719. Each home features 3 bedrooms and 2 bathrooms with spacious floor plans ranging from 1,408 to 1,448 square feet. With all four properties fully developed and income-producing, this is an ideal portfolio addition for investors.

PROPERTY DETAILS:

ADDRESS	SF	BEDS/ BATHS	RENT INCOME	LEASE EXP
240 Cisterna Dr	1,408	3/2	\$1,525	10.1.26
1011 Silverthorn	1,448	3/2	\$1,750	4.1.28
1271 Tulip St	1,448	3/2	\$1,700	4.16.27
1131 Tulip ST	1,448	3/2	\$1,725	10.21.27
TOTAL PRICE:	\$1,307,800			

STEVE FINEBERG
(479)271-4161
steve@arkrealestate.com



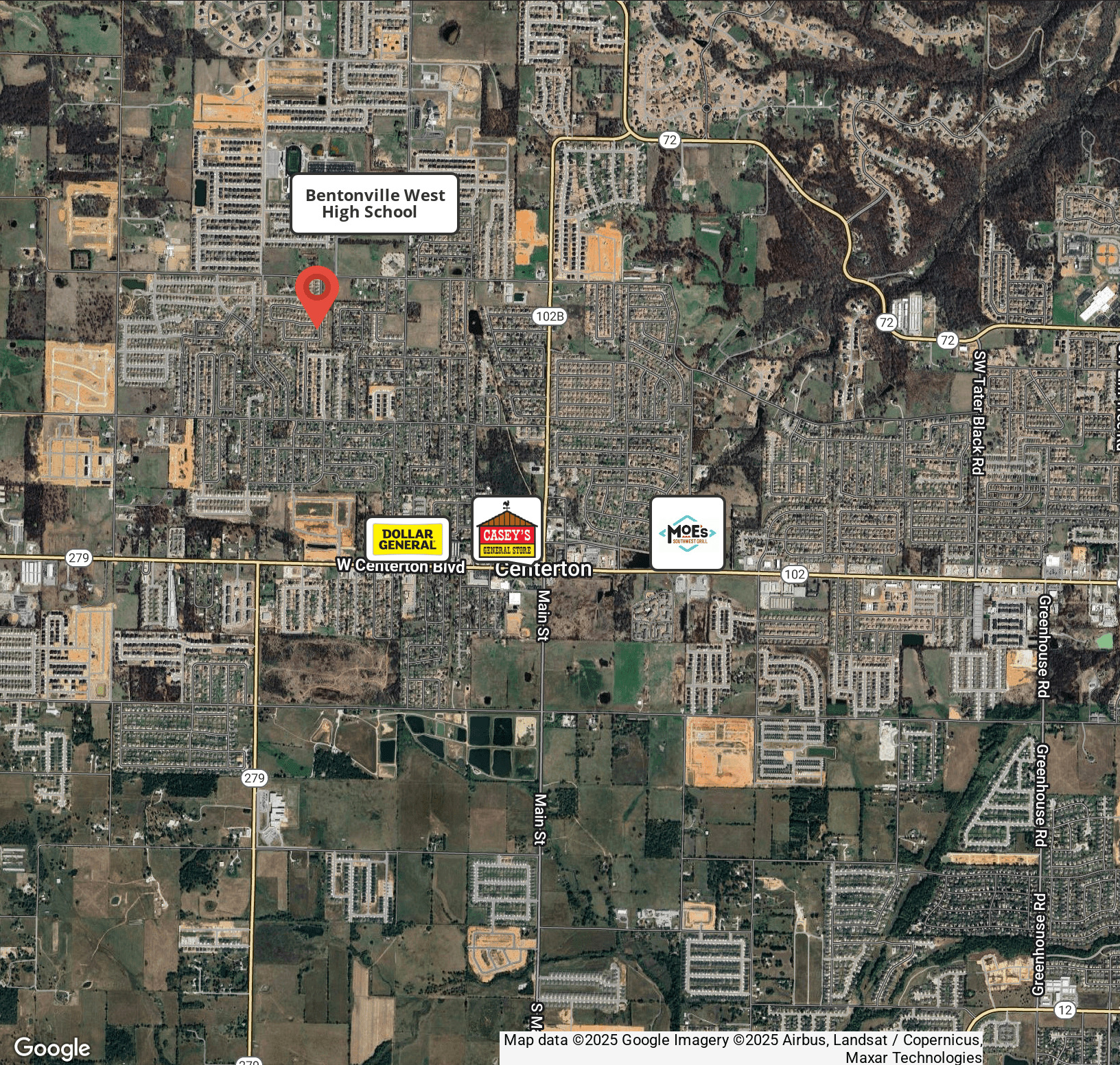


FINEBERG & ASSOCIATES

COMMERCIAL REAL ESTATE

104 S Main Street Bentonville, AR 72712

ARKREALSTATE.COM



Bentonville West High School



Google

Map data ©2025 Google Imagery ©2025 Airbus, Landsat / Copernicus, Maxar Technologies

STEVE FINEBERG
(479)271-4161
steve@arkrealestate.com



FOR MORE INFORMATION ON THIS PROPERTY OR TO SEE OUR OTHER PROPERTIES VISIT ARKREALSTATE.COM