

4450 COMMERCE CIRCLE

ATLANTA, GA
30336

FOR SALE or LEASE
18,700± SF Freestanding Warehouse

BRIAN BRATTON, SIOR

Senior Vice President
404.942.2028
bbratton@kingindustrial.com

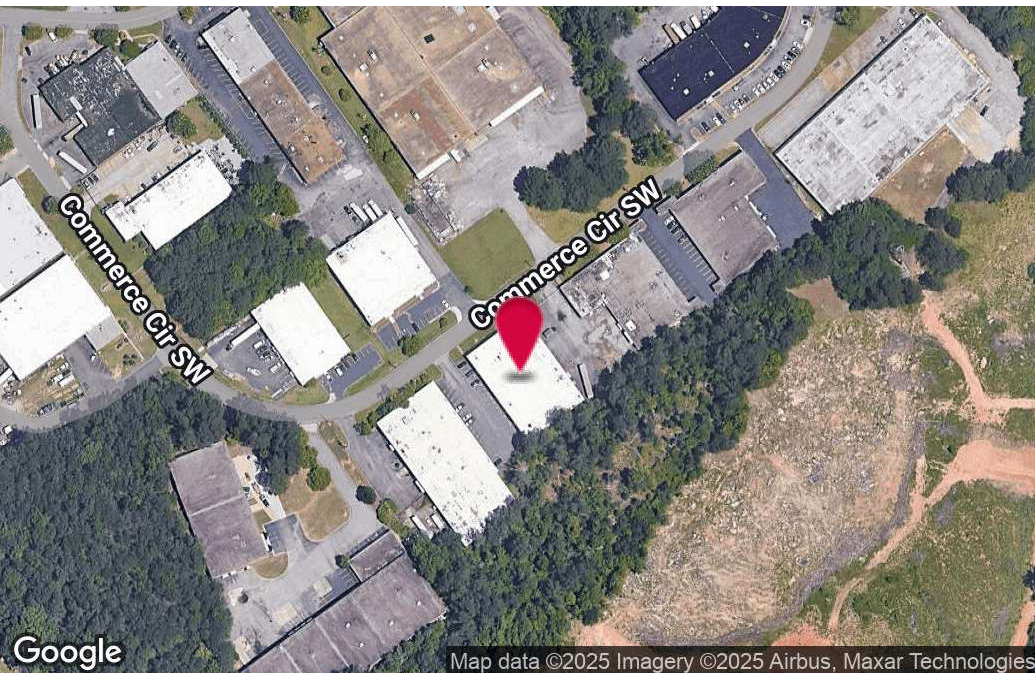
STEVE RATCHFORD, SIOR, CCIM

Senior Vice President
404.942.2003
sratchford@kingindustrial.com



Industrial • Commercial • Investment
404.942.2000 | kingindustrial.com

FOR
SALE/LEASE
18,700±SF



PROPERTY HIGHLIGHTS

- 2,018± SF Office Space
- 1 Drive-In Door, Front Load
- 3 Dock High Doors, Rear Load
- 16' Clear Ceiling Height
- 600 Amps, 120/280 Volts, 3 Phase Power
- Sprinklered
- Zoned M-2
- 1.15± Acres

BRIAN BRATTON, SIOR

Senior Vice President

404.942.2028

bbratton@kingindustrial.com

STEVE RATCHFORD, SIOR, CCIM

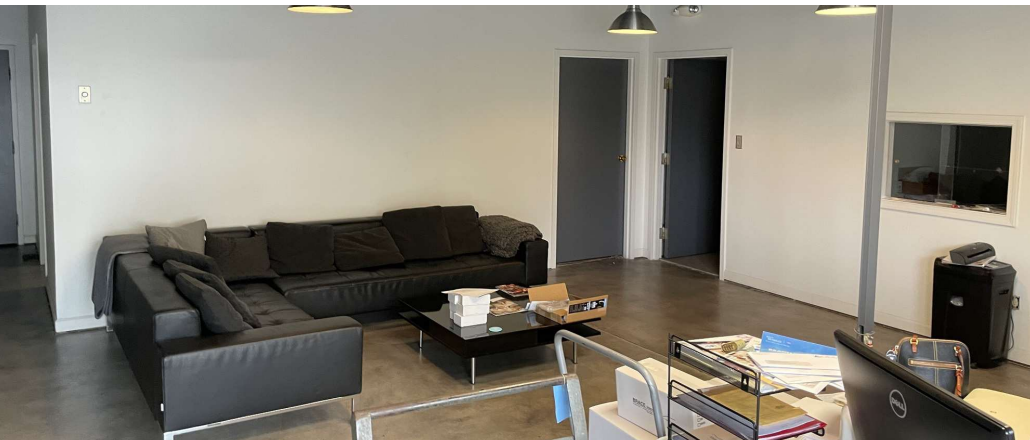
Senior Vice President

404.942.2003

sratchford@kingindustrial.com

Every effort has been made to provide accurate information, but no liability is assumed for errors or omissions.

ADDITIONAL PHOTOS



BRIAN BRATTON, SIOR

Senior Vice President

404.942.2028

bbratton@kingindustrial.com

STEVE RATCHFORD, SIOR, CCIM

Senior Vice President

404.942.2003

sratchford@kingindustrial.com

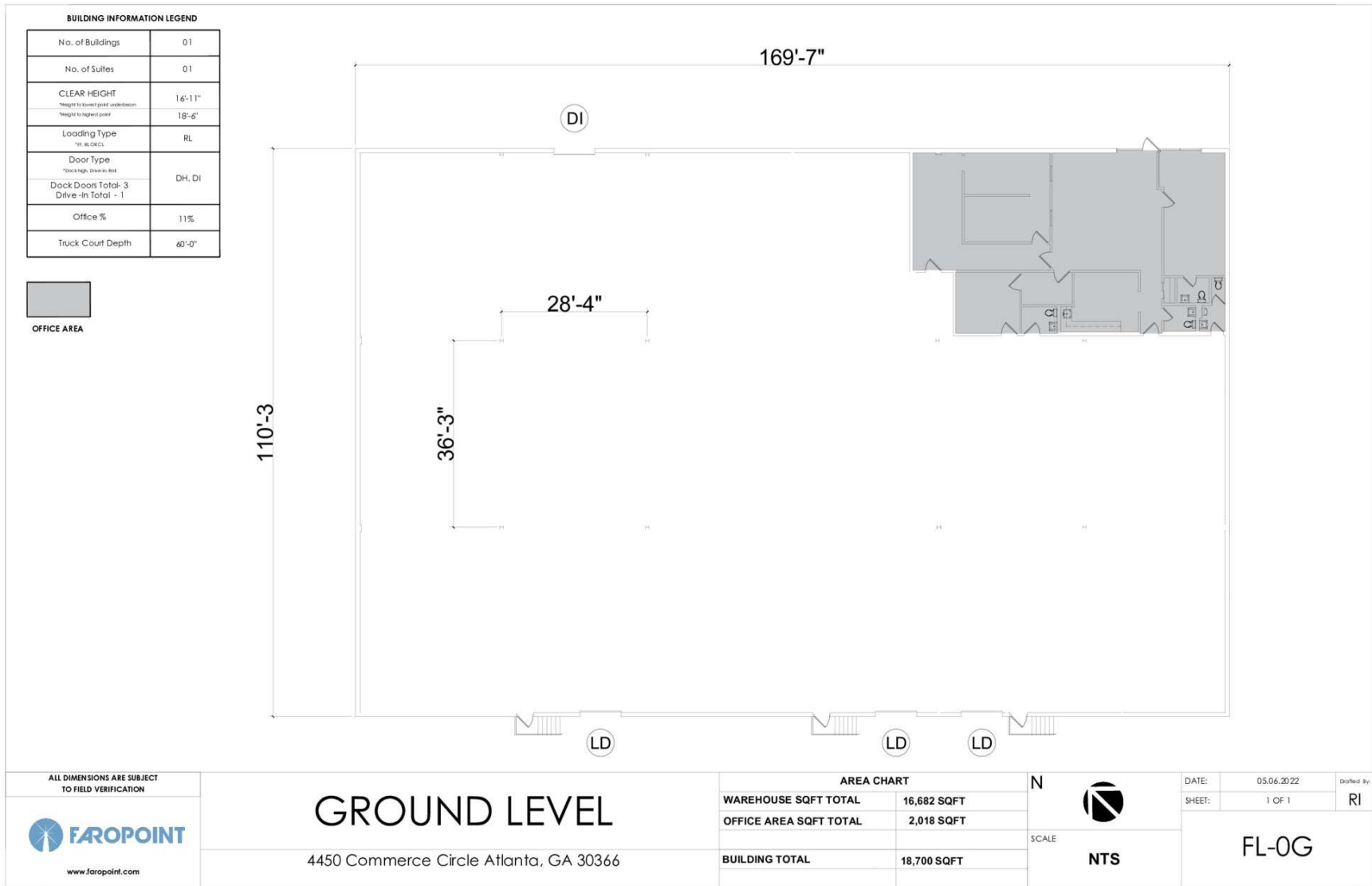
Every effort has been made to provide accurate information, but no liability is assumed for errors or omissions.

CORFAC
INTERNATIONAL

King Industrial
Realty, Inc.  **Faropoint**

Industrial • Commercial • Investment
404.942.2000 | kingindustrial.com

FLOOR PLAN



BRIAN BRATTON, SIOR

Senior Vice President

404.942.2028

bbratton@kingindustrial.com

STEVE RATCHFORD, SIOR, CCIM

Senior Vice President

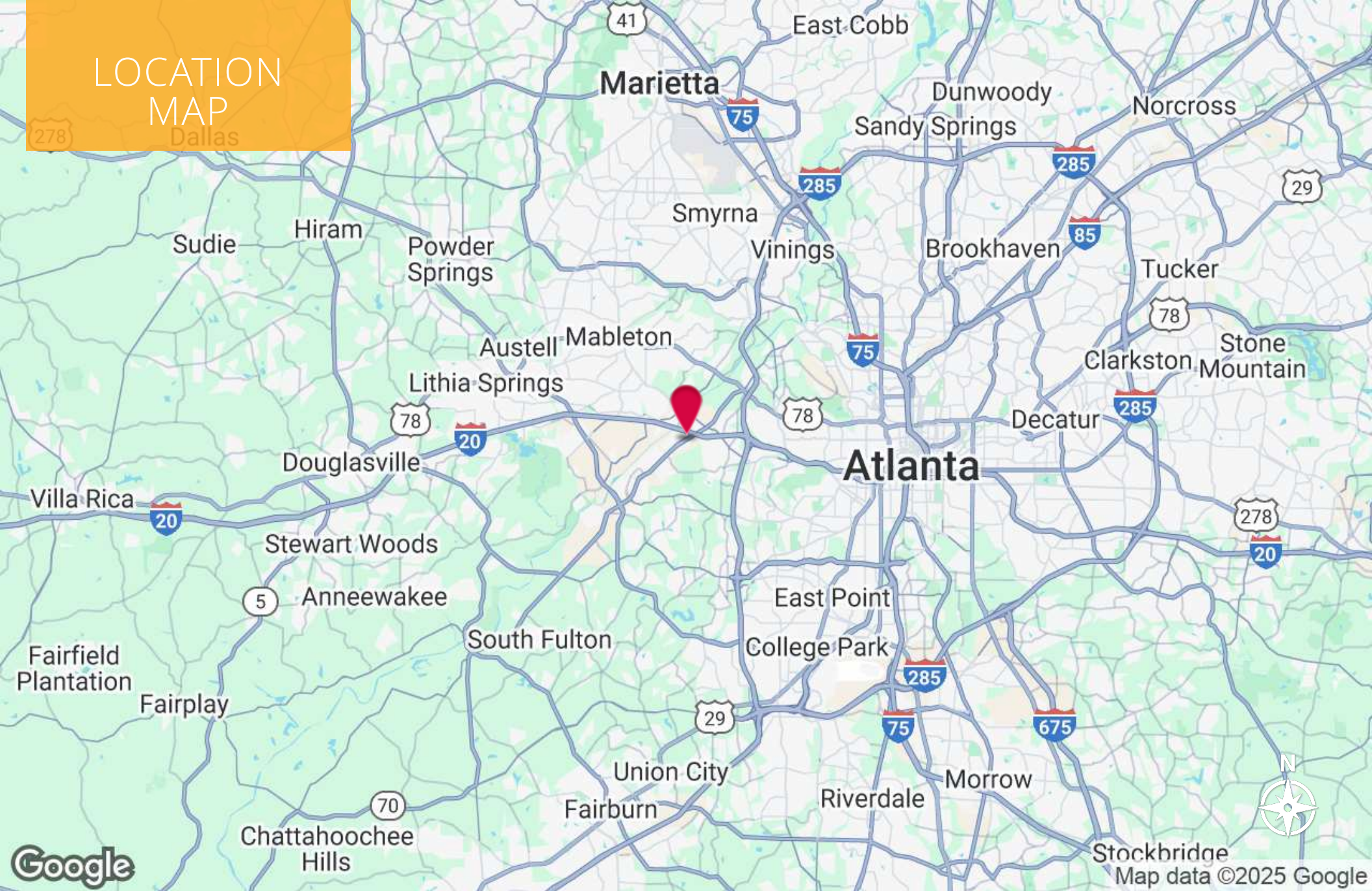
404.942.2003

sratchford@kingindustrial.com

Every effort has been made to provide accurate information, but no liability is assumed for errors or omissions.

LOCATION MAP

Dallas



BRIAN BRATTON, SIOR

Senior Vice President

404.942.2028

bbratton@kingindustrial.com

STEVE RATCHFORD, SIOR, CCIM

Senior Vice President

404.942.2003

sratchford@kingindustrial.com

Every effort has been made to provide accurate information, but no liability is assumed for errors or omissions.

CORFAC
INTERNATIONAL

King Industrial
Realty, Inc.  **Faropoint**

Industrial • Commercial • Investment
404.942.2000 | kingindustrial.com

EXCLUSIVELY LISTED BY:

BRIAN BRATTON, SIOR

Senior Vice President
bbratton@kingindustrial.com
404.942.2028

STEVE RATCHFORD, SIOR, CCIM

Senior Vice President
sratchford@kingindustrial.com
404.942.2003

King Industrial Realty, Inc.  **Faropoint**

Industrial • Commercial • Investment
404.942.2000 | kingindustrial.com