



BRANDON WAREHOUSE

BURKMAN INDUSTRIAL PARK

AIR-CONDITIONED SHOP FOR LEASE

1005 North 9th Avenue | Brandon, SD 57005



SIZE

Building Size: 2,772 sqft
Land: .37 acres



PRICE

\$2,000 / month (Gross + Utilities)
Tenant Self-CAM



DETAILS

- Morton building is air-conditioned/ heated
- Office with 5 windows, storage closet, and 3/4 bath
- 13' sidewalls
- 1 12' x 12' overhead door
- Paint bay with 10' x 10' overhead door, separate ventilation system and extra lighting
- Floor drains
- Storage room with utility sink
- 3-phase power
- Mezzanine storage area above office
- Outdoor storage potential



LOCATION

Located in the Burkman Industrial Park, with close proximity to Interstate 90.



LAYOUT

Office space, large shop area with overhead door, second enclosed shop area with overhead door.

*Body Shop restriction

Information deemed reliable but not guaranteed.



TYSDAL
COMMERCIAL

7400 South Bitterroot Place
Sioux Falls, South Dakota 57108
TySDalCommercial.com



376-0127
ryan@tySDalcommercial.com

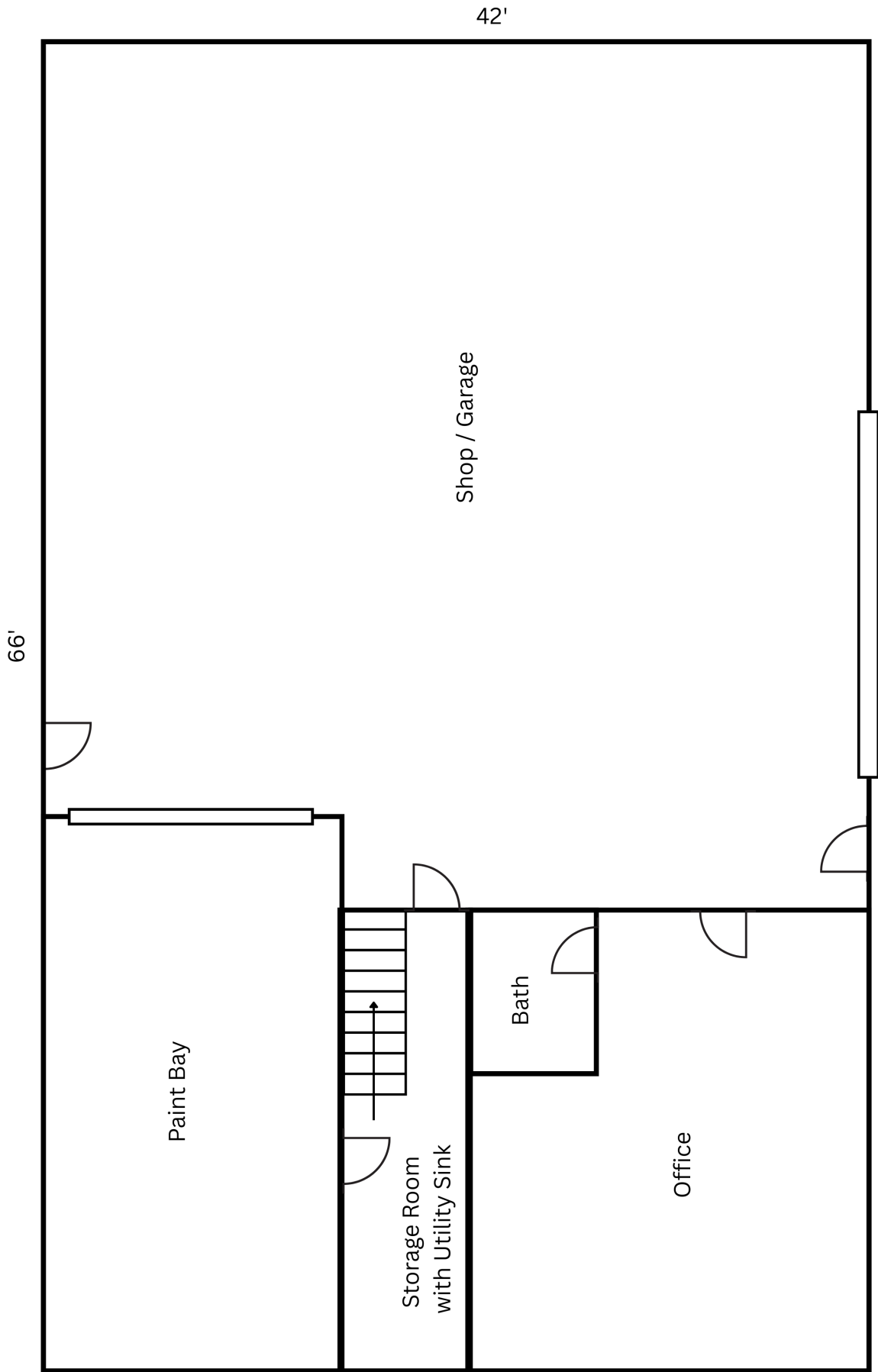
AREA MAP



PARCEL MAP



FLOOR PLAN



PHOTOS

