

# Chestermere Business Park

100 Rainbow Road, Chestermere AB



# Property Information

## Highlights

- Located along Chestermere's growing south side neighborhood of Rainbow Falls.
- Class A Commercial space built with structural steel framing, high efficiency glass, full frontal glazed facade, sprinklers and a thoughtful landscaping throughout the site
- Units offer 14" doors, generous loading areas and ample parking
- Each bay features concrete mezzanine spaces
- 18' high ceilings
- Only a 7 minute drive to Calgary's new Ring Road via 17th Avenue SE or Glenmore Trail SE

## Details

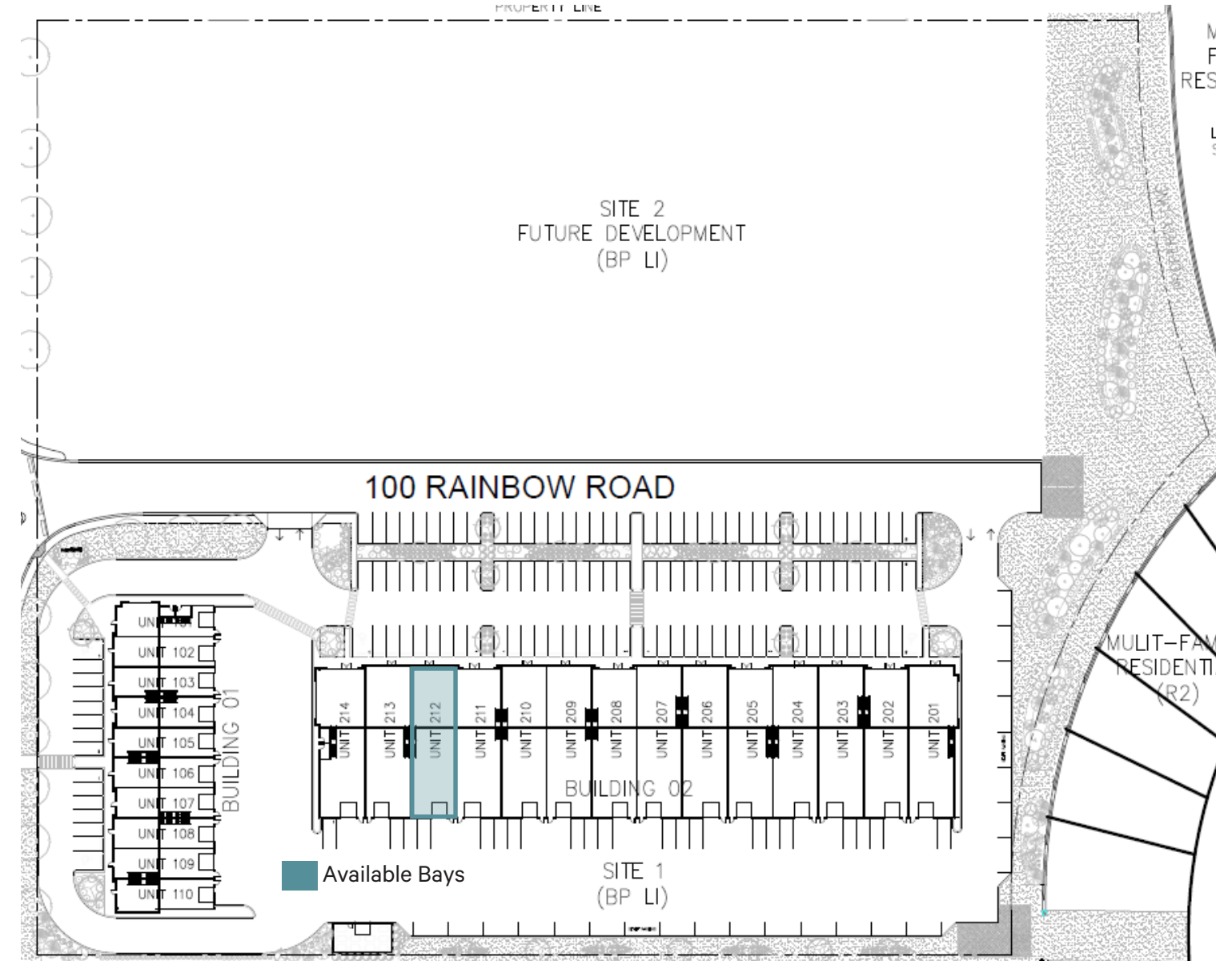
<b>Size:</b>	Building 2- Bay 212- 2,957 sq. ft. (Main Floor only)
<b>Op Costs ( 2025 est.) :</b>	\$5.50 per sq.ft
<b>Parking:</b>	mall style
<b>Available:</b>	September 1, 2025
<b>Signage:</b>	Pylon & Fascia
<b>Rates:</b>	Market



Population of 20,732  
Chestermere Population

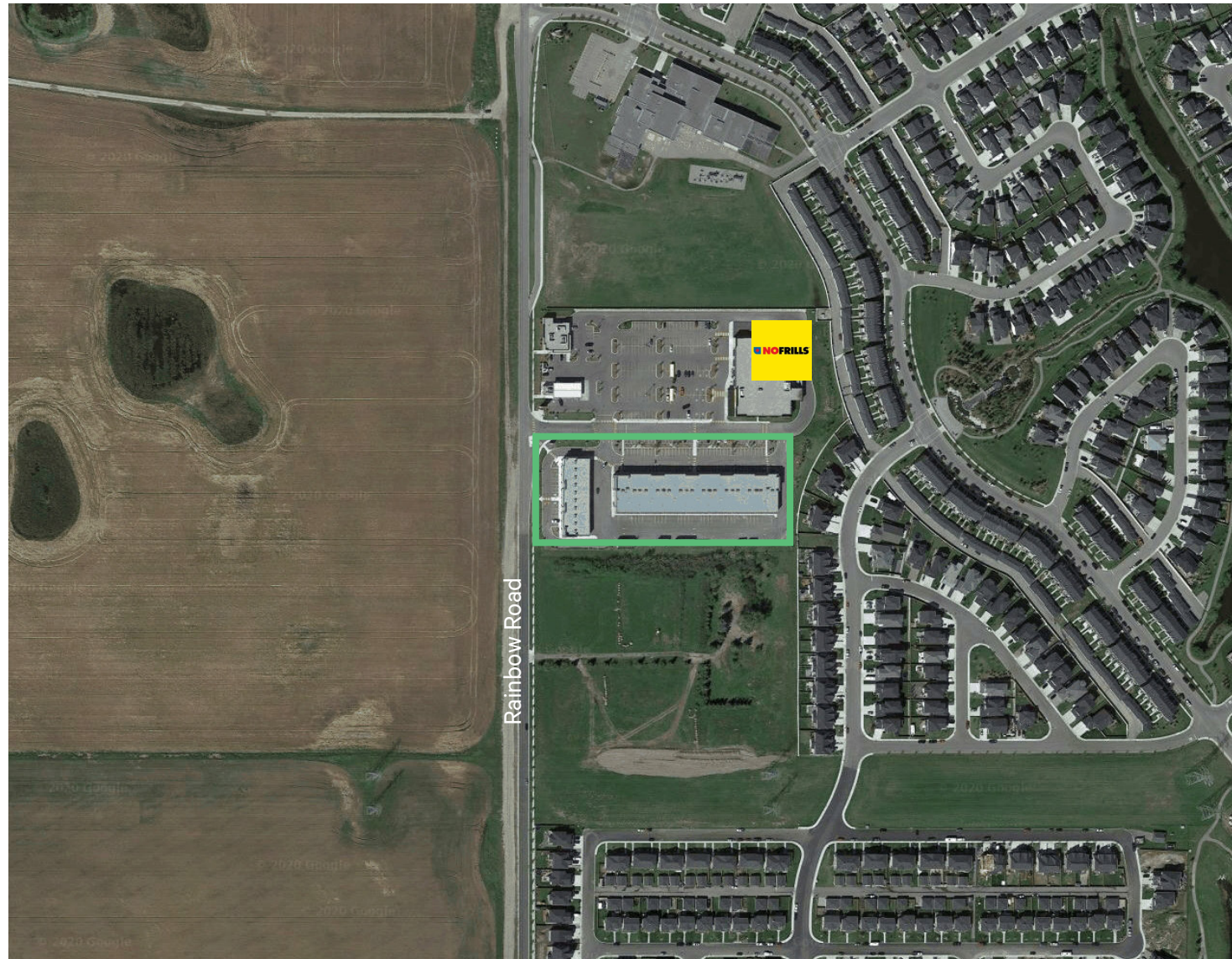


Average Income \$134,101



# Chestermere Business Park

## Site Location



## Drive Times

- 7 minute drive to Calgary Ring Road, via 17th Avenue SE or Glenmore Trail SE
- 20 minute drive from Calgary
- 10 minute drive from Foothills Industrial Area (SE Calgary)
- 3 minute drive to Chestermere Golf Course

## Contact Us

**John Moss**  
Senior Vice President  
+1 403 750 0507  
john.moss@cbre.com

**Ania Gryzewski**  
Vice President  
+1 403 750 0806  
ania.gryzewski@cbre.com

This disclaimer shall apply to CBRE Limited, and to all divisions of the Corporation ("CBRE"). The information set out herein (the "Information") has not been verified by CBRE, and CBRE does not represent, warrant or guarantee the accuracy, correctness and completeness of the Information. CBRE does not accept or assume any responsibility or liability, direct or consequential, for the Information or the recipient's reliance upon the Information. The recipient of the Information should take such steps as the recipient may deem necessary to verify the Information prior to placing any reliance upon the Information. The Information may change and any property described in the Information may be withdrawn from the market at any time without notice or obligation to the recipient from CBRE.