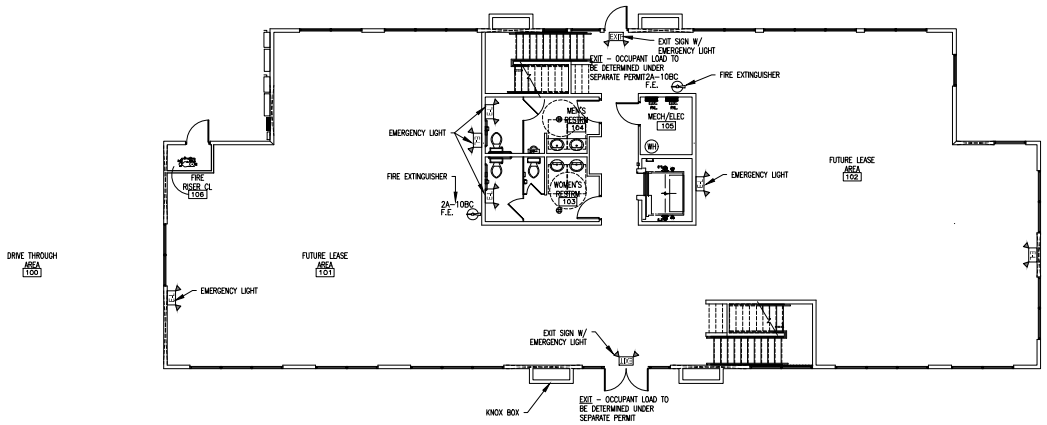
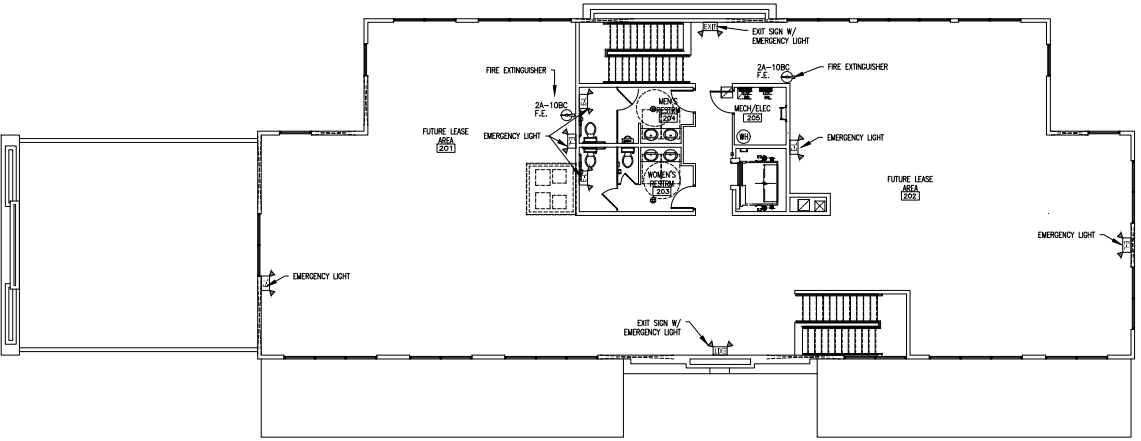




BY DRAWING NAME



0 4' 8' 16'
SCALE: 1/8" = 1'-0"
FIRST FLOOR PLAN - FIRE 2



0 4' 8' 16'
SCALE: 1/8" = 1'-0"
SECOND FLOOR PLAN - FIRE 2

CODE DATA	
OCCUPANCY CLASSIFICATION: B & S1 (NON SEPARATED USE)	
CONSTRUCTION TYPE: I-B 1-STORY (SPRINKLED)	
CONSTRUCTION AREA DATA: ENCLOSURE AREA: 12,158 S.F. PATIO AREA: 1,431 S.F. TOTAL AREA: 13,589 S.F.	
ACTUAL & ALLOWABLE BUILDING AREAS & HEIGHT (SECTION 506.2)	
OCC. TYPE	ALLOWABLE
B & S1 (NON SEPARATED USE) (TO BE SUBMITTED UNDER SEPARATE PERMIT)	HT. 2 STORIES 36,000 S.F. (> THAN ACTUAL OF 5,535 S.F.)
OCCUPANT LOAD	
UNASSIGNED: 12,158 S.F. (TO BE SUBMITTED UNDER SEPARATE PERMIT)	
EXITING REQUIREMENTS (TABLE 1006.1.2)	
EGRESS WIDTH REQUIRED:	
DOOR OPENING WIDTH REQUIRED - (TO BE SUBMITTED UNDER SEPARATE PERMIT)	
DOOR OPENING WIDTH PROVIDED - 72"	
FIRE EXTINGUISHERS:	
2A-10BC FIRE EXTINGUISHER, WALL MOUNTED (1 PER 3,000 SF, 75' TRAVEL DISTANCE MAX.) - 5-REQUIRED	

GENERAL NOTE:
907.2.1.1.2 DUCT SMOKE DETECTION. DUCT SMOKE DETECTORS COMPLYING WITH SECTION 907.2.1.1 SHALL BE LOCATED AS FOLLOWS:
1. IN THE MAIN RETURN AIR AND EXHAUST AIR PLENUM OF EACH AIR-CONDITIONING SYSTEM HAVING A CAPACITY GREATER THAN 2,000 CUBIC FEET PER MINUTE (CFM) (0.94 M3/S). SUCH DETECTORS SHALL BE LOCATED IN A SERVICEABLE AREA DOWNSTREAM OF THE LAST DUCT INLET.
2. AT EACH CONNECTION TO A VERTICAL DUCT OR RISER SERVING TWO OR MORE STORES FROM A RETURN AIR DUCT OR PLENUM OF AN AIR-CONDITIONING SYSTEM IN GROUP R-1 AND R-2 OCCUPANCIES, A SMOKE DETECTOR IS ALLOWED TO BE USED IN EACH RETURN AIR RISER CARRYING NOT MORE THAN 5,000 CFM (0.4 M3/S) AND SERVING NOT MORE THAN 10 AIR-INLET OPENINGS.

- GENERAL NOTES FOR FIRE PROTECTION SYSTEMS**
- FIRE SPRINKLER SHOP DRAWINGS SHALL BE SUBMITTED TO THE ALBUQUERQUE FIRE MARSHAL'S OFFICE FOR REVIEW AND APPROVAL OF ANY INSTALLATION OR MODIFICATION TO THE FIRE SPRINKLER SYSTEM, FIRE ALARM SYSTEM, KITCHEN SUPPRESSION SYSTEM OR ANY OTHER FIRE RELATED SYSTEM
 - THE FIRE SPRINKLER SYSTEM WILL BE SUPERVISED WHEN REQUIRED BY THE 2015 INTERNATIONAL FIRE CODE

LEGEND	
	NEW EXIT SIGNAGE - DIRECTIONAL AS NOTED
	NEW EMERGENCY LIGHT WITH EXIT SIGNAGE
	NEW EMERGENCY LIGHT
	FIRE EXTINGUISHER (2A-10BC)