

For Sale / For Lease

# 1103 Donner Avenue

MONESSEN, PA 15062

ROSTRAVER TOWNSHIP / WESTMORELAND COUNTY

7,200 SF<sub>±</sub>

Office & Warehouse Space  
Available Immediately



## Property Highlights

- + Building Size: 7,200 SF<sub>±</sub>
- + Grade Level
- + Lot size: 110' x 440'

- + 1.18 Acres<sub>±</sub>
- + Can be used as office, warehouse, showroom, or conference center

**KIM CLACKSON**  
Executive Vice President  
412.471.3018  
kim.clackson@cbre.com

**MATT CLACKSON**  
Senior Vice President  
412.471.4069  
matt.clackson@cbre.com

**JOSH SINGER**  
Associate  
412.496.7255  
josh.singer@cbre.com

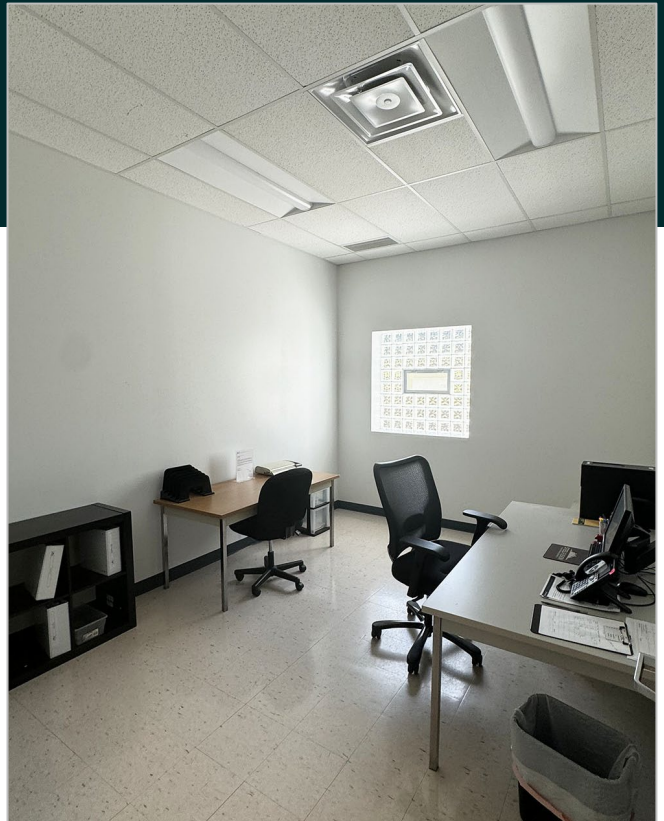
**CBRE**



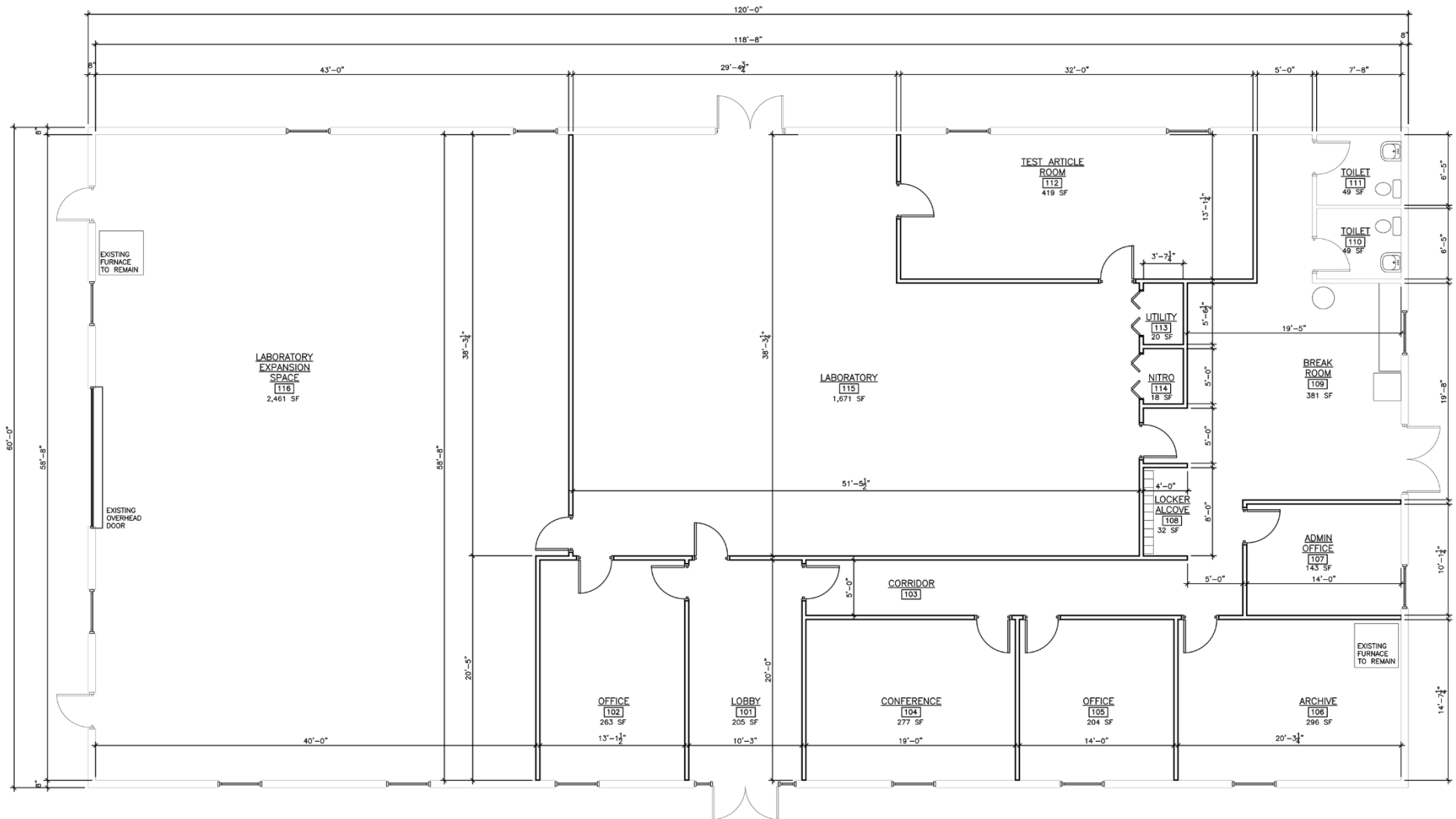
**CBRE**

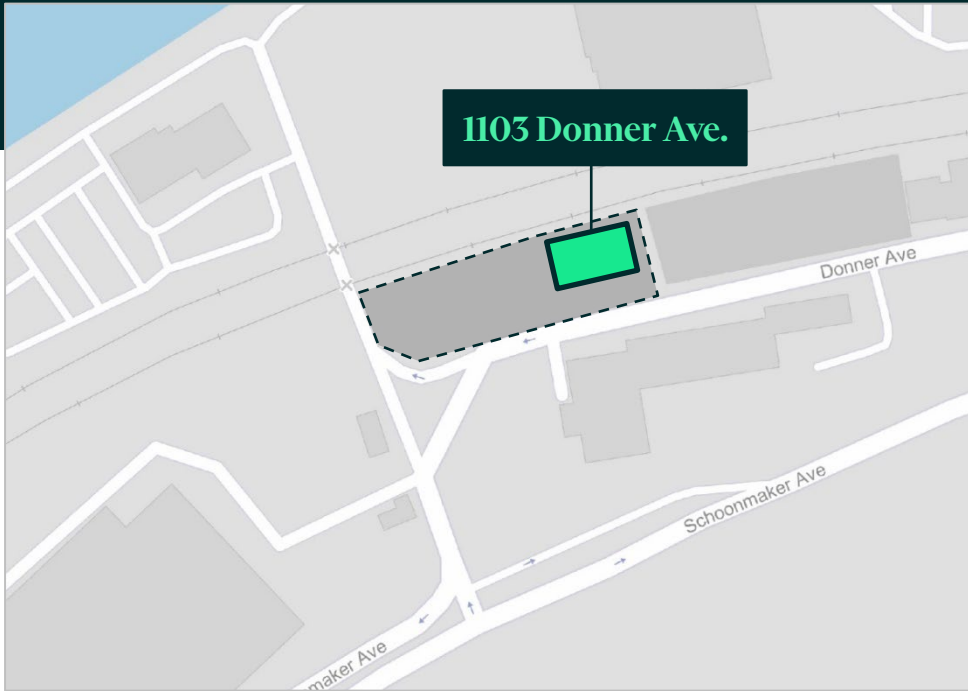
301 Grant Street, Suite 4000  
Pittsburgh, PA 15219  
cbre.com

# 1103 Donner Avenue



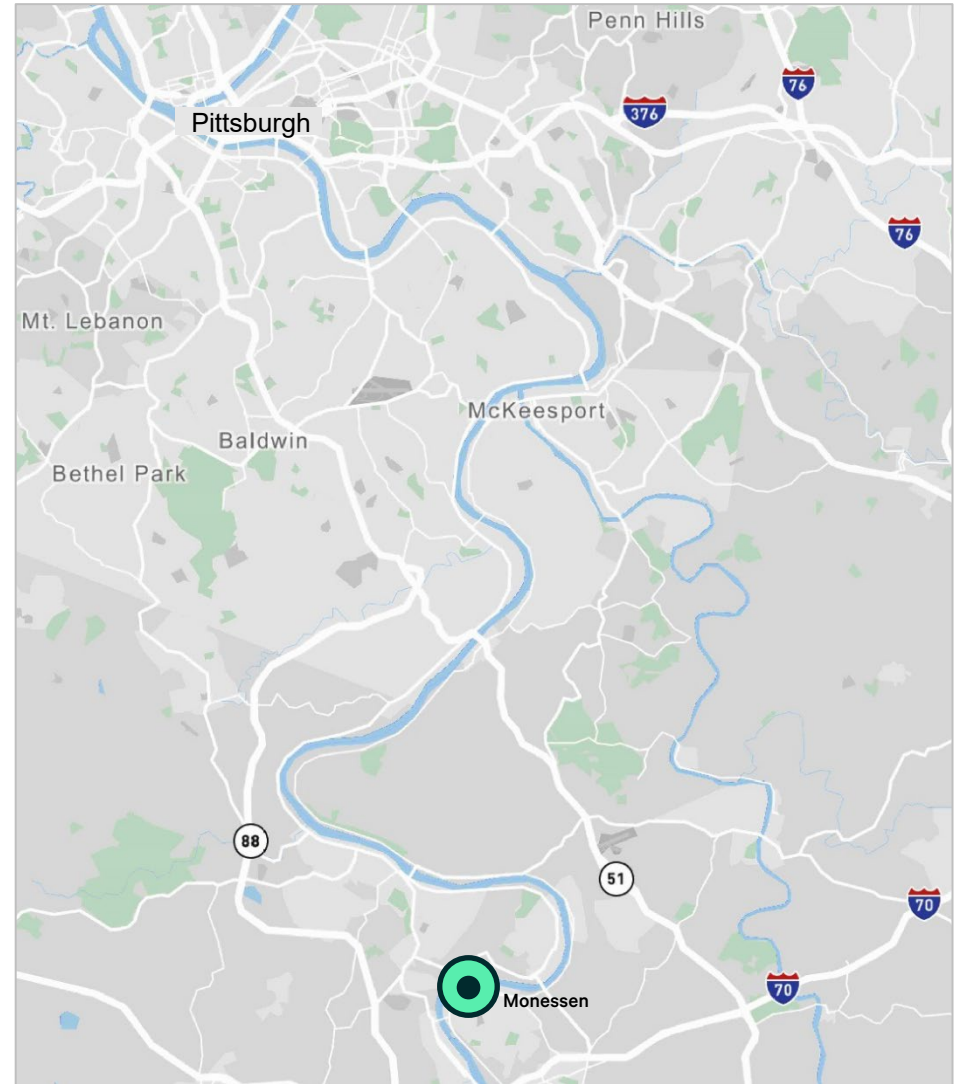
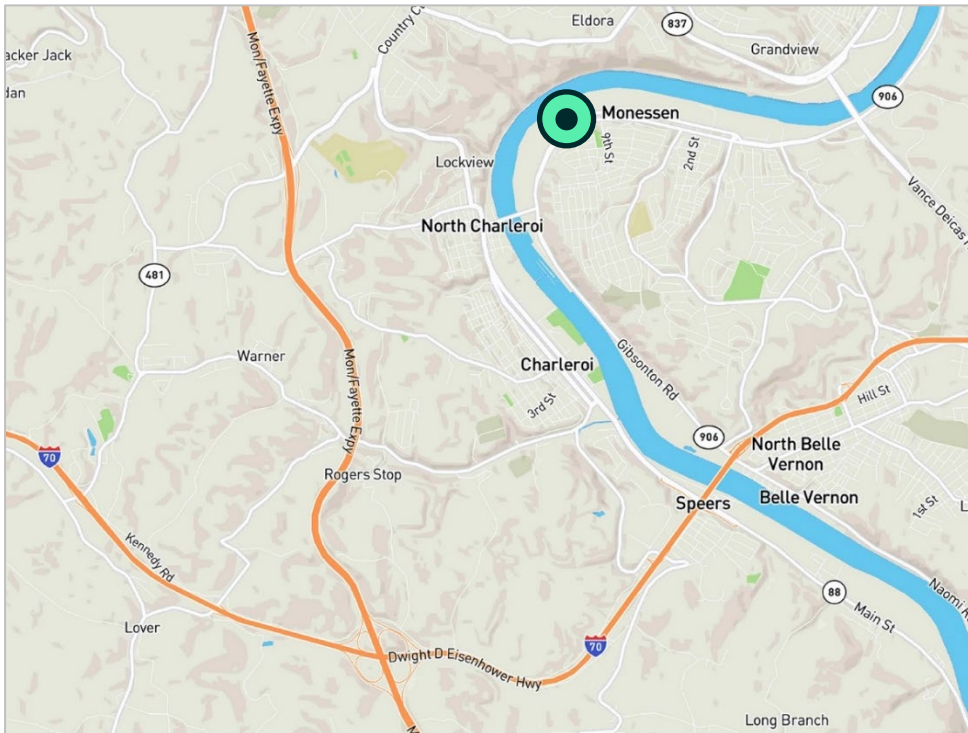
# Floor Plan





## Location / Highway Access

- + Route 43 – 7.5 miles
- + Route 51 – 7 miles
- + Interstate 70 – 3.8 miles (Exit 42A)
- + Approx. 50 minutes / 30 miles to Pittsburgh



# Aerial



MONONGAHELA RIVER

MARONDA WAY

12th STREET

1103 Donner Ave.

DONNER AVENUE

DONNER AVE.

SCHOONMAKER AVE.