

Office



Restroom



Rear View

INDUSTRIAL SPACE FOR LEASE

410 Elwood Rd. #103, Irving TX 75061

**BASE RENT: \$1500 +
Utilities (Water & Electricity)**

Clearance Height: 16 FT

Suite Square Footage
1,500

Year of Construction
1984

Real Estate Broker

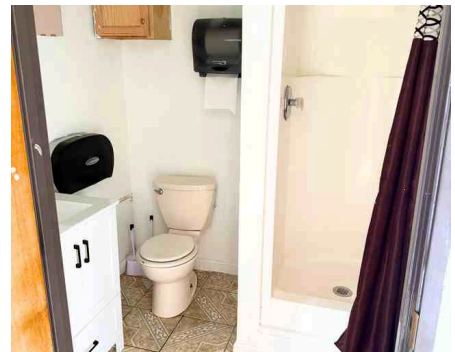
Joe Goldsmith
214-499-8569
gdj405@gmail.com



Lobby



Office 3



Bathroom

RETAIL / OFFICE SPACE FOR LEASE

614 N. Britain Road #618, Irving, TX 75061

RENT: \$1500 + Utilities

1,152 TOTAL SF

- Entry Way - 51 SF
- Lobby - 145 SF
- Office 1 - 93 SF
- Office 2 - 133 SF
- Office 3 - 131 SF
- Office 4 - 154 SF
- Bathroom with Shower

Building Square Footage

7,920

Year of Construction

1984

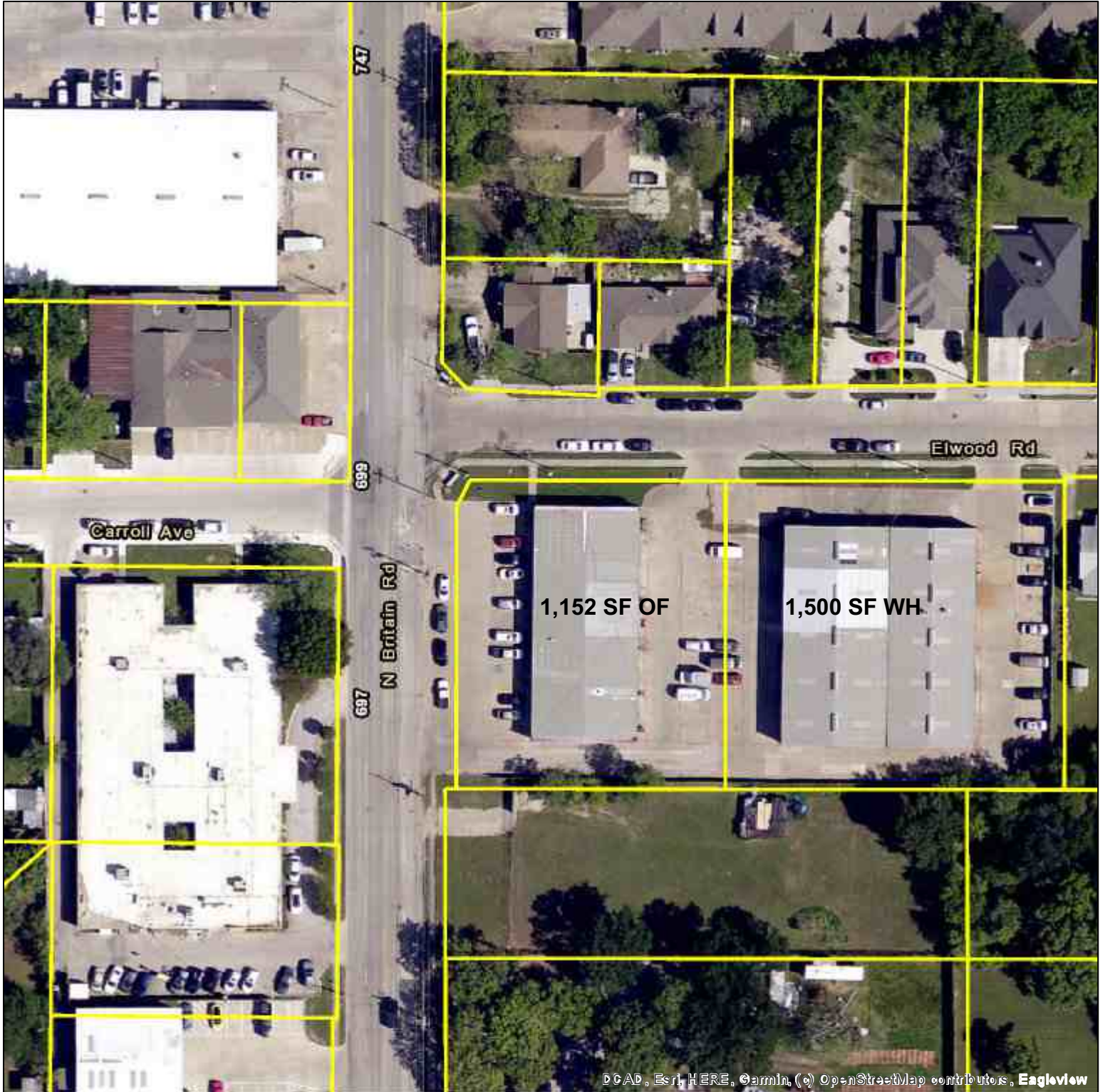
Real Estate Broker

Joe Goldsmith
214-499-8569
gdj405@gmail.com

Aerial

Date of copy: 6/11/2026

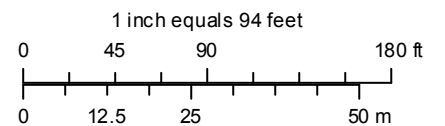
DCAD Tax Account: 325225300A0010000



This product is for INFORMATIONAL purposes only and may not have been prepared for or be suitable for legal, engineering, or surveying purposes. It does not represent an on-the-ground survey and represents only the approximate relative location of property boundaries.

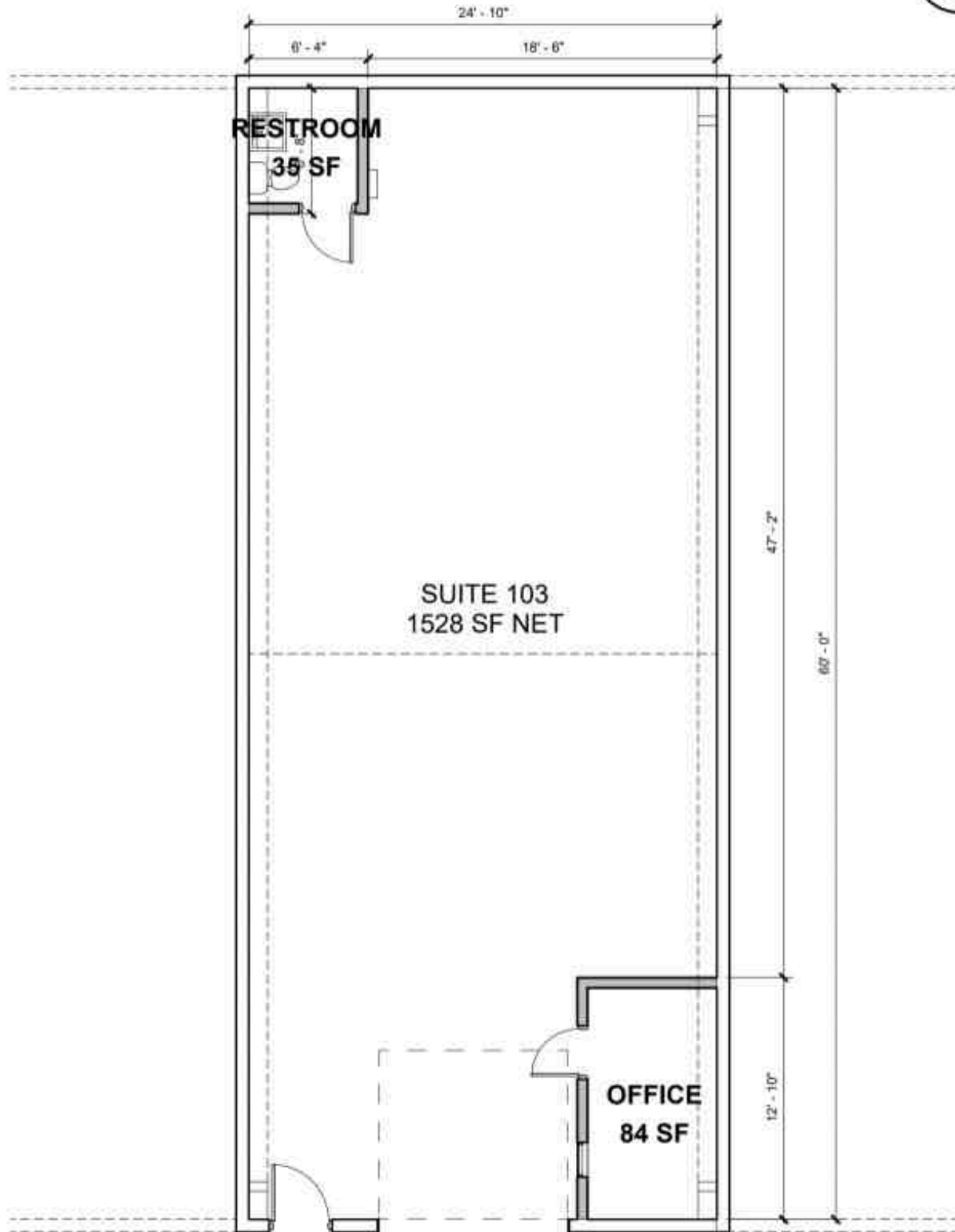


Dallas Central Appraisal District
2949 N Stemmons Freeway
Dallas, TX 75247-6195
(214) 631-1342
www.dallascad.org

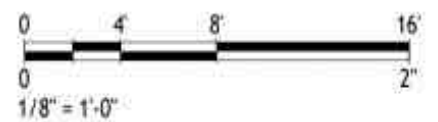


DCAD, NCTCOG, USGS, Esri, Inc

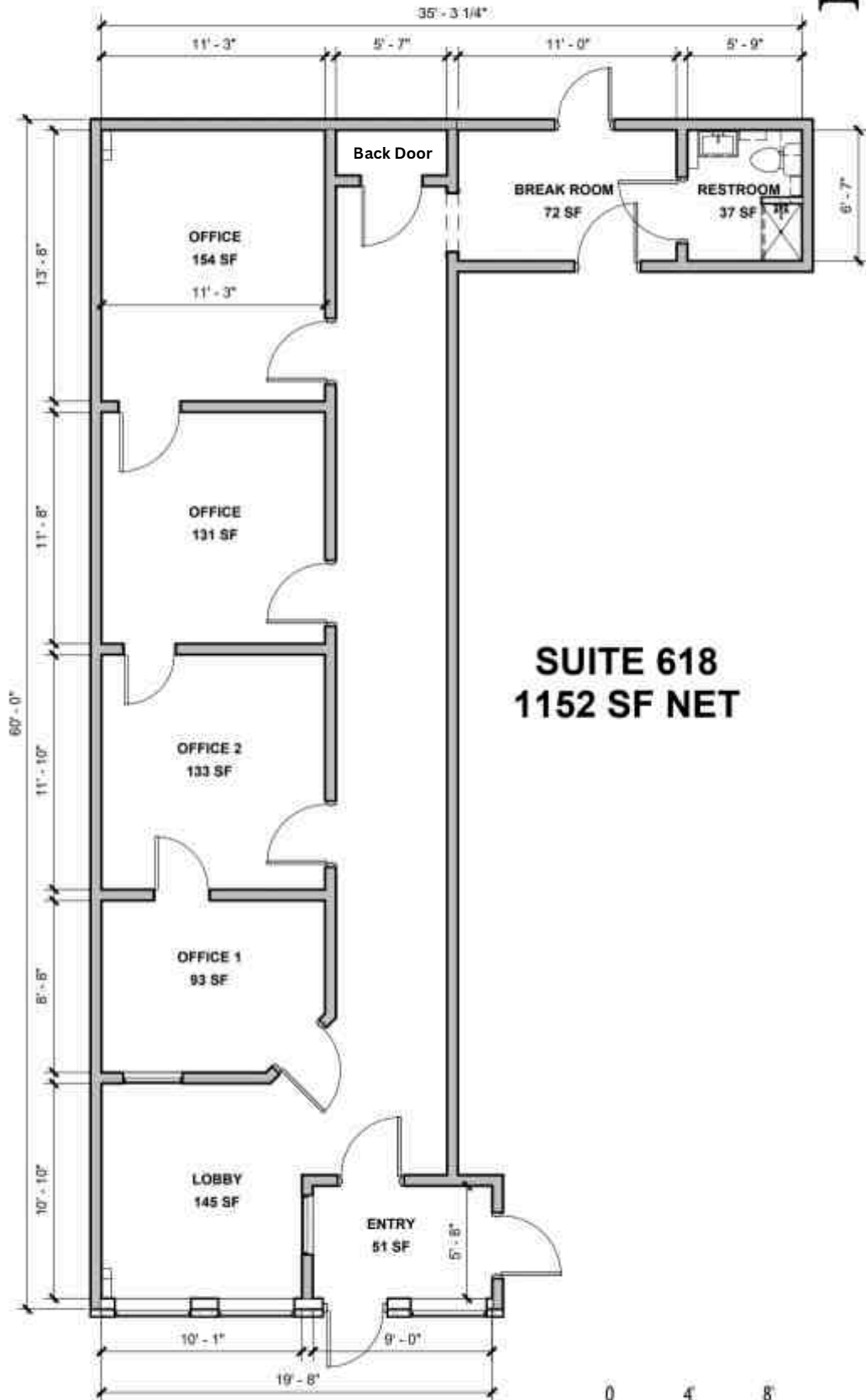
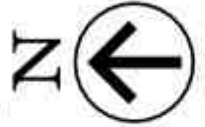
410 Elwood Rd #103,
Irving, TX 75061



① Suite 103 Floor Plan
1/8" = 1'-0"

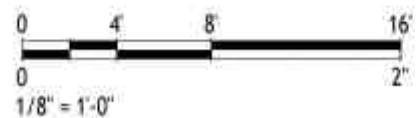


618 N Britain Rd,
Irving, TX 75061



SUITE 618
1152 SF NET

① Suite 618 Floor Plan
1/8" = 1'-0"





Entry Way



Lobby



Office 1



Office 2



Office 3



Office 4

