



MARKETING FLYER

675 ARAPEEN

UNIVERSITY OF UTAH RESEARCH PARK | SALT LAKE CITY, UT

SPENCER WIXOM

801-633-3891

s_wixom@woodburycorp.com



675 ARAPEEN | UNIVERSITY OF UTAH RESEARCH PARK | SALT LAKE CITY, UT

PROJECT HIGHLIGHTS

- 1,113 to 11,889 RSF available
- Lab and office compatible
- 4 parking stalls / 1,000 SF
- Class-A finishes
- Preeminent Location
- Fiber optic data connectivity
- Subway Subs in the Building
- ½ mile from the heart of the University
- 32,077 students at the University provides a large pool from which employees and interns may be recruited
- 9.8 miles to the Salt Lake International Airport
- 3.9 miles from downtown SLC



Suite 100

- 8,884 RSF available on 9/30/2026

Suite 101

- 2,733 RSF available

Suite 102

- 7,431 RSF available

Suite 103

- 8,839 RSF available

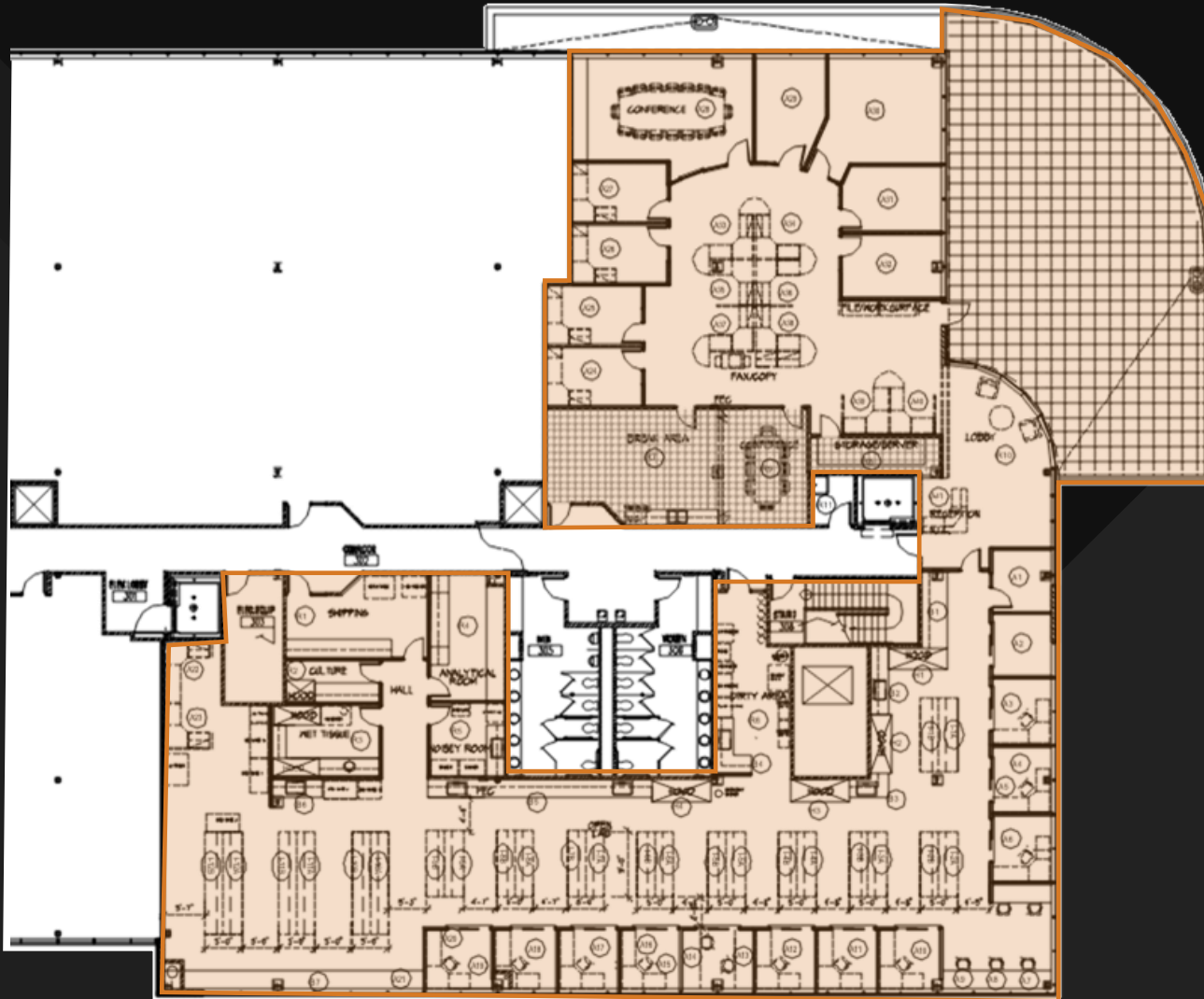
Suite 104

- 4,286 RSF available 12/31/2026



Suite 200

- 6,746 RSF available



Suite 302

- 11,889 RSF available

