



NEW RETAIL SOUTHEAST BOISE

FOR LEASE

2351 S. Apple St.
Boise, ID 83706



PROPERTY INFORMATION

PROPERTY TYPE	Retail
LEASE RATE	Contact Agent
AVAILABLE SPACE	±1,200 - 2,760 SF
ADDRESS	2351 S. Apple St. Boise, ID 83706
LEASE TERM	Negotiable
LEASE TYPE	NNN

HIGHLIGHTS

- Prime Southeast Boise location with convenient access to I-84, Downtown Boise, and the Boise Airport
- New construction - grocery-adjacent retail building suitable for restaurant, medical, or other retail uses.
- High building image with prominent identity is surrounded by a strong mix of tenants.
- Excellent accessibility via Apple St and surrounding arterial corridors
- Desirable demographic profile includes strong daytime populations and high incomes.
- Ample on-site parking and circulation

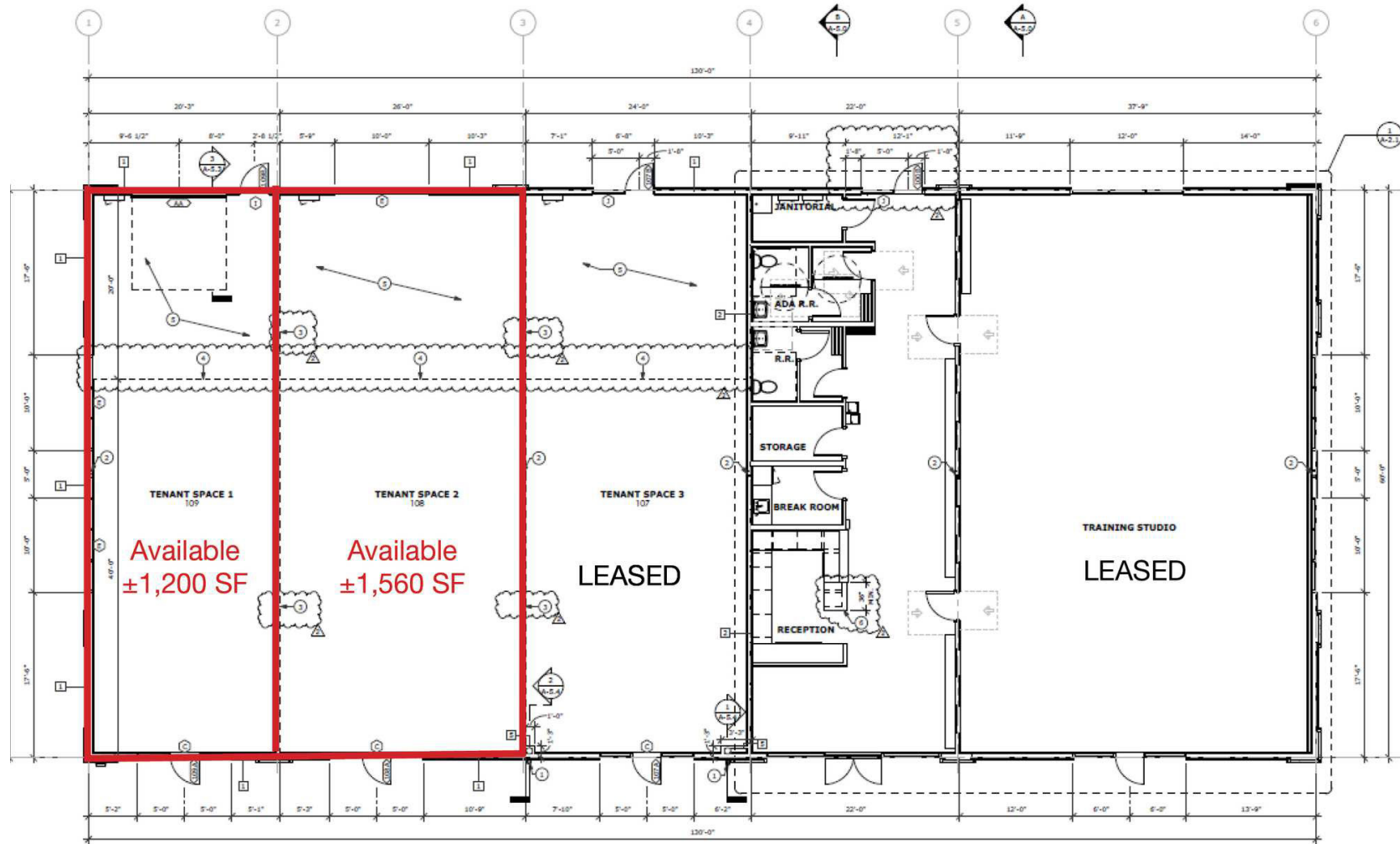
This information was obtained from sources believed reliable but cannot be guaranteed and is subject to change at any time. Any opinions or estimates are used for example only.

TRAVIS DUNN

208.229.6005 | travis@naiselect.com

RILEY WIEDMEIER, MBA

208.954.2229 | riley@naiselect.com

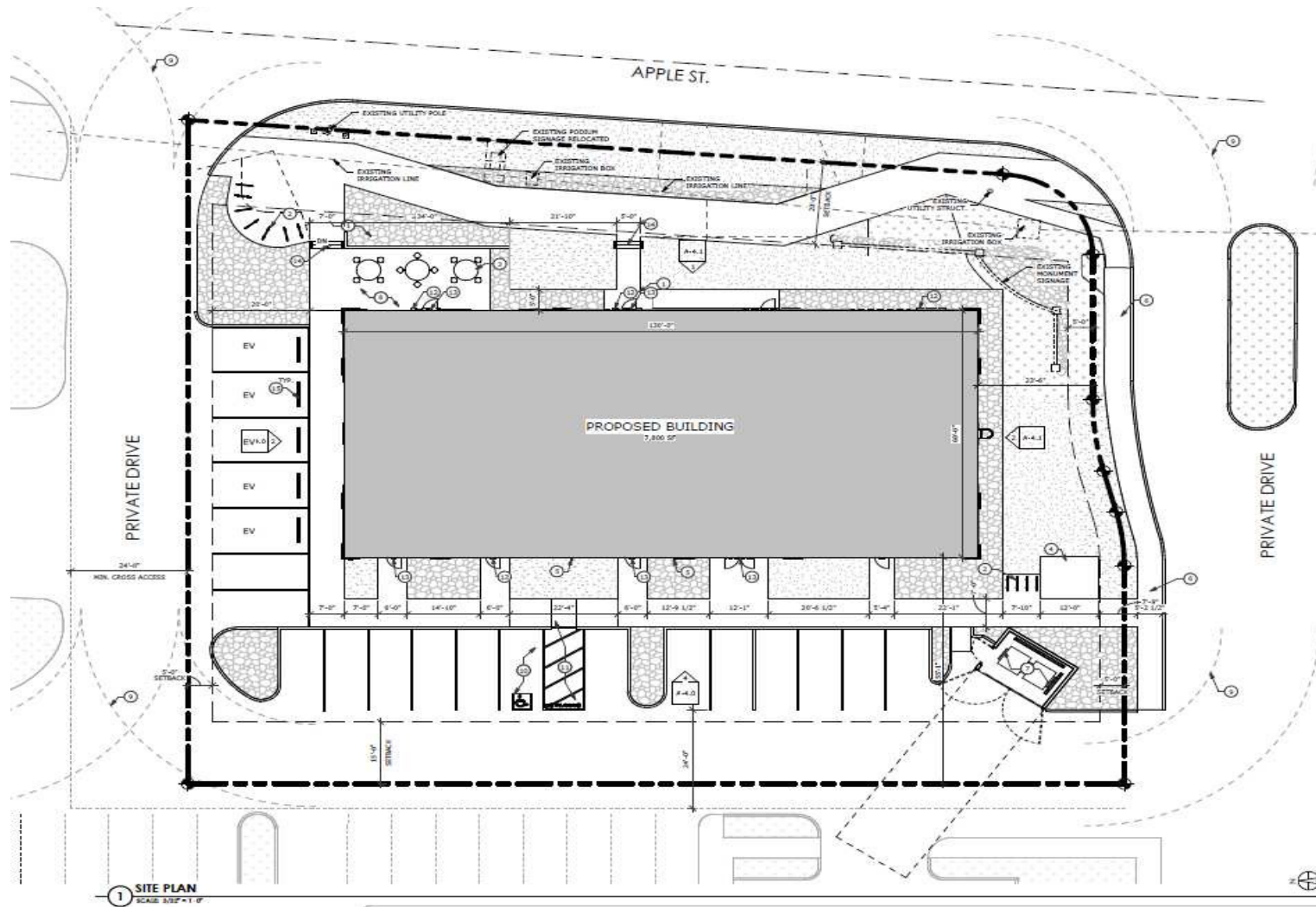


TRAVIS DUNN

208.229.6005 | travis@naiselect.com

RILEY WIEDMEIER, MBA

208.954.2229 | riley@naiselect.com

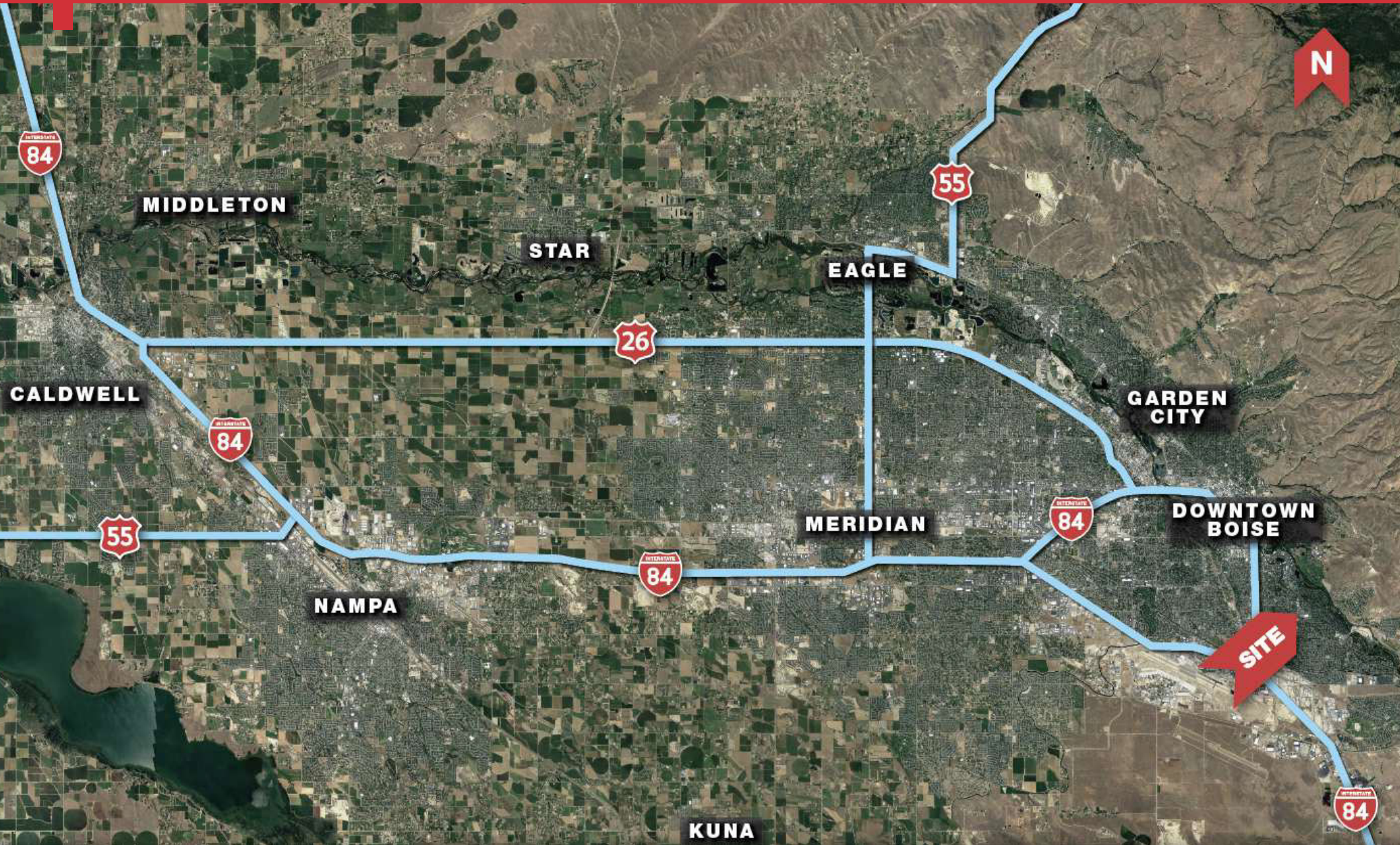


TRAVIS DUNN

208.229.6005 | travis@naiselect.com

RILEY WIEDMEIER, MBA

208.954.2229 | riley@naiselect.com



TRAVIS DUNN

208.229.6005 | travis@naiselect.com

RILEY WIEDMEIER, MBA

208.954.2229 | riley@naiselect.com