



MINUTES TO OKEECHOBEE RD & TURNPIKE

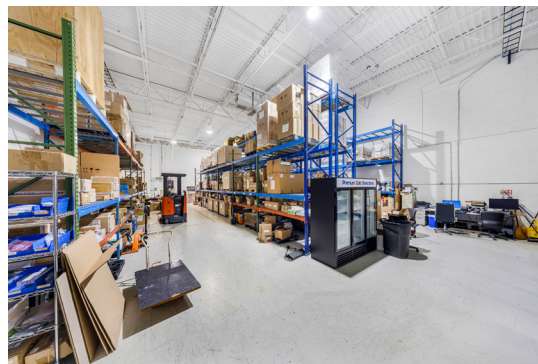
Sublease

OPPORTUNITY


12601 NW
115th
AVE MEDLEY

PROPERTY OVERVIEW

- Location: Medley – central industrial submarket
- Size: ±6,000 SF
- Clear Height: 21'
- A/C: 100% air-conditioned warehouse
- Power: 3-phase power
- Layout: Warehouse + office + showroom
- Reception: Welcoming front entry
- Kitchenette: Included
- Parking: Ample on-site parking
- Condition: Turnkey, move-in ready
- Zoning/Use: Lab / medical / tech / light manufacturing / storage
- Equipment: Racking, forklift & select equipment available
- Functionality: Strong racking capacity
- Connectivity: Minutes to Okeechobee Rd & Turnpike
- Proximity: Easy access to MIA & PortMiami
- Submarket: Established Medley industrial hub
- Opportunity: Central, fully built-out space



Chabeli Castillo 
Real Estate Broker

 (786) 423 0525

 chabelicm@gmail.com

 @castillochabeli