



SPACE AVAILABLE:

Building | 20,705 SF

Lot | 128,066 SF (2.94 Acres)

PRICE:

\$2,500,000.00



Charles Reichert

Partner | CCIM
Commercial Realtor®

701.223.2450

charles@aspengroupprealstate.com



Mathew Reichert

Founder | Partner | CCIM
Commercial Realtor®

701.223.2450

matt@aspengroupprealstate.com

HIGHLIGHTS:

Warehouse Space:

- (6) 16' x 14' Overhead Doors
- (2) 8' x 8' Dock Doors
- 16' Sidewalls
- 120 / 208 V 4W 3 PH
- Mens & Womens Restroom
- Electric Heat & Suspended Unit Heater

Office Space:

- 8 Private Offices
- 2 Open Works Areas
- Conference Room
- Break Room
- Server Room
- Mens & Womens Restroom
- Asphalt & Gravel Fenced & Gated Yard
- 2 Access Points from Centurion Drive
- Great for Owner Occupancy or an Investment

424 S 3rd Street, Suite 2 | Bismarck, ND | WWW.ASPENGROUPPREALESTATE.COM

This information has been secured from sources we believe to be reliable, but we make no representation or warranties, expressed or implied, as to the accuracy of the information. All references to age, square footage, income and expenses are approximate. Buyers or lessors should conduct their own independent investigations and rely on those results.

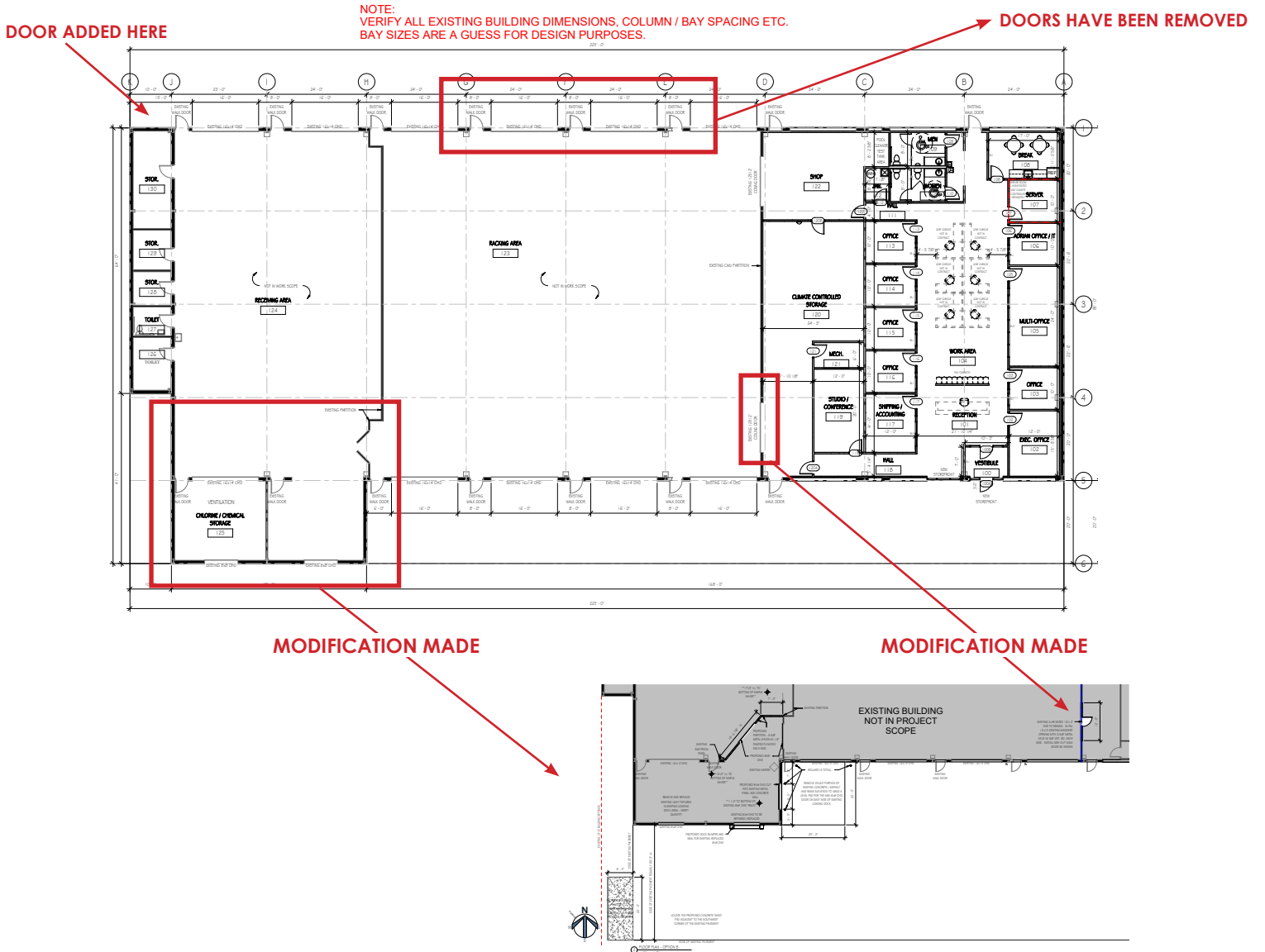
LOT LINES



424 S 3rd Street, Suite 2 | Bismarck, ND | WWW.ASPENGROUPREALESTATE.COM

This information has been secured from sources we believe to be reliable, but we make no representation or warranties, expressed or implied, as to the accuracy of the information. All references to age, square footage, income and expenses are approximate. Buyers or lessors should conduct their own independent investigations and rely on those results.

PROPERTY DRAWINGS



PROPERTY PHOTOS *Exterior*



424 S 3rd Street, Suite 2 | Bismarck, ND | WWW.ASPENGROUPREALESTATE.COM

This information has been secured from sources we believe to be reliable, but we make no representation or warranties, expressed or implied, as to the accuracy of the information. All references to age, square footage, income and expenses are approximate. Buyers or lessors should conduct their own independent investigations and rely on those results.

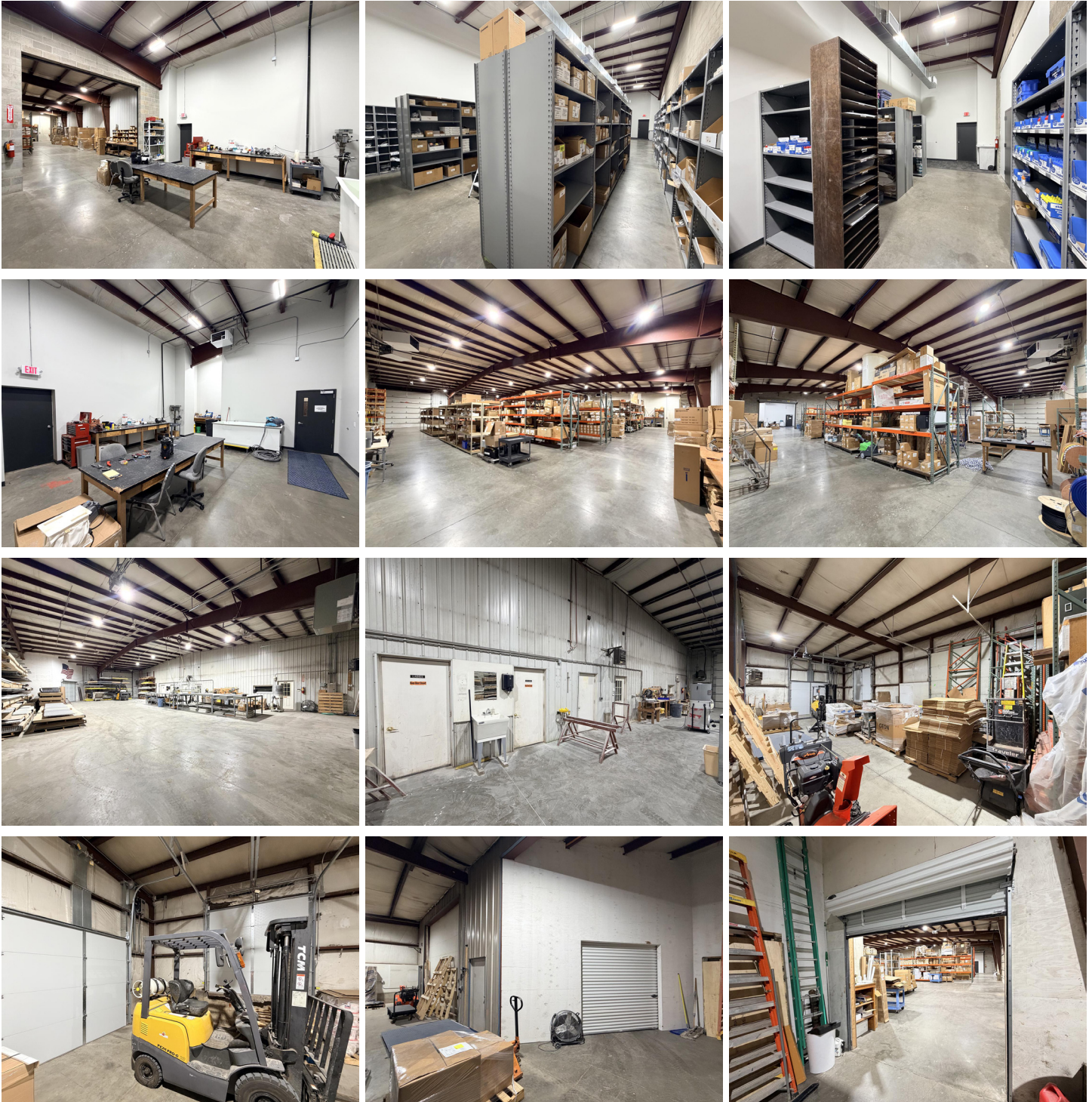
PROPERTY PHOTOS *Interior Office*



424 S 3rd Street, Suite 2 | Bismarck, ND | WWW.ASPENGROUPREALESTATE.COM

This information has been secured from sources we believe to be reliable, but we make no representation or warranties, expressed or implied, as to the accuracy of the information. All references to age, square footage, income and expenses are approximate. Buyers or lessors should conduct their own independent investigations and rely on those results.

PROPERTY PHOTOS *Warehouse*



424 S 3rd Street, Suite 2 | Bismarck, ND | WWW.ASPENGROUPREALESTATE.COM

This information has been secured from sources we believe to be reliable, but we make no representation or warranties, expressed or implied, as to the accuracy of the information. All references to age, square footage, income and expenses are approximate. Buyers or lessors should conduct their own independent investigations and rely on those results.

PROPERTY PHOTOS Warehouse



424 S 3rd Street, Suite 2 | Bismarck, ND | WWW.ASPENGROUPREALESTATE.COM

This information has been secured from sources we believe to be reliable, but we make no representation or warranties, expressed or implied, as to the accuracy of the information. All references to age, square footage, income and expenses are approximate. Buyers or lessors should conduct their own independent investigations and rely on those results.

LOCATION MAP



424 S 3rd Street, Suite 2 | Bismarck, ND | WWW.ASPENGROUPREALESTATE.COM

This information has been secured from sources we believe to be reliable, but we make no representation or warranties, expressed or implied, as to the accuracy of the information. All references to age, square footage, income and expenses are approximate. Buyers or lessors should conduct their own independent investigations and rely on those results.