

WINDSONG OFFICE PARK

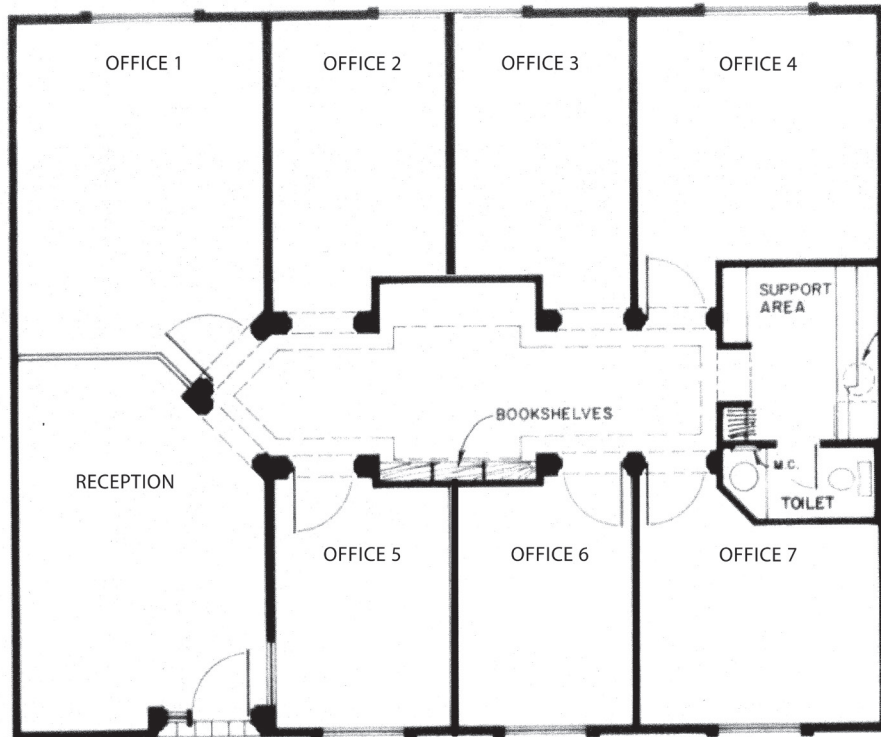
South Lamar's Walkable Garden Office Park

Private Offices - Suite 24

Available Immediately

The suite consists of 7 spacious picture windowed offices, reception/waiting area, private bathroom and work/break-room. High speed fiber optics available through Google. Under-counter refrigerator and microwave provided.

Square Footage	1,571 SF
Rate per SF	\$19.00 NNN
OpEx	\$14.56 + E & J
Monthly Rent	\$4,394 + E & J
Term	5 years
Condition	Full Build-Out
Timing	Immediate
Parking	4 per 1,000 SF



JOHN HANLY
Owner
Cell: 512.203.5608
john@windsongofficepark.com