



FOR
LEASE

6965 - 6967 WASHINGTON AVE S EDEN PRAIRE, MN 55344

Located in a highly desirable Eden Prairie business corridor, Braemar II offers a flexible and functional space ideal for a variety of uses. With convenient access to major highways and a layout designed to support both operational efficiency and growth, this property is well-suited for businesses looking to expand or establish a strong presence in the southwest metro.

HUNTER STANEK

✉ HUNTER@GCPMN.COM

📞 612.500.7997

🌐 GONYEACOMMERCIAL.COM



DETAILS



Address

6965 - 6967
Washington Ave South
Eden Praire, MN 55344



Building Size

31,203 Square Feet



Space Available

Suite 6965 - 6967



Office Square Footage

2,033 Square Feet



Warehouse Square Footage

6,951 Square Feet



Total Square Footage

8984 Square Feet



Additional Office/Mezzanine Square Footage

692 Square Feet



Ceiling Clear Height

18'



Loading Access

1 Dock Door
1 Drive-in Door



Rental Rate

\$10,390.00/month
(plus utilities)



Year Built

1972



Date Available

30 Days

HUNTER STANEK

✉ HUNTER@GCPMN.COM

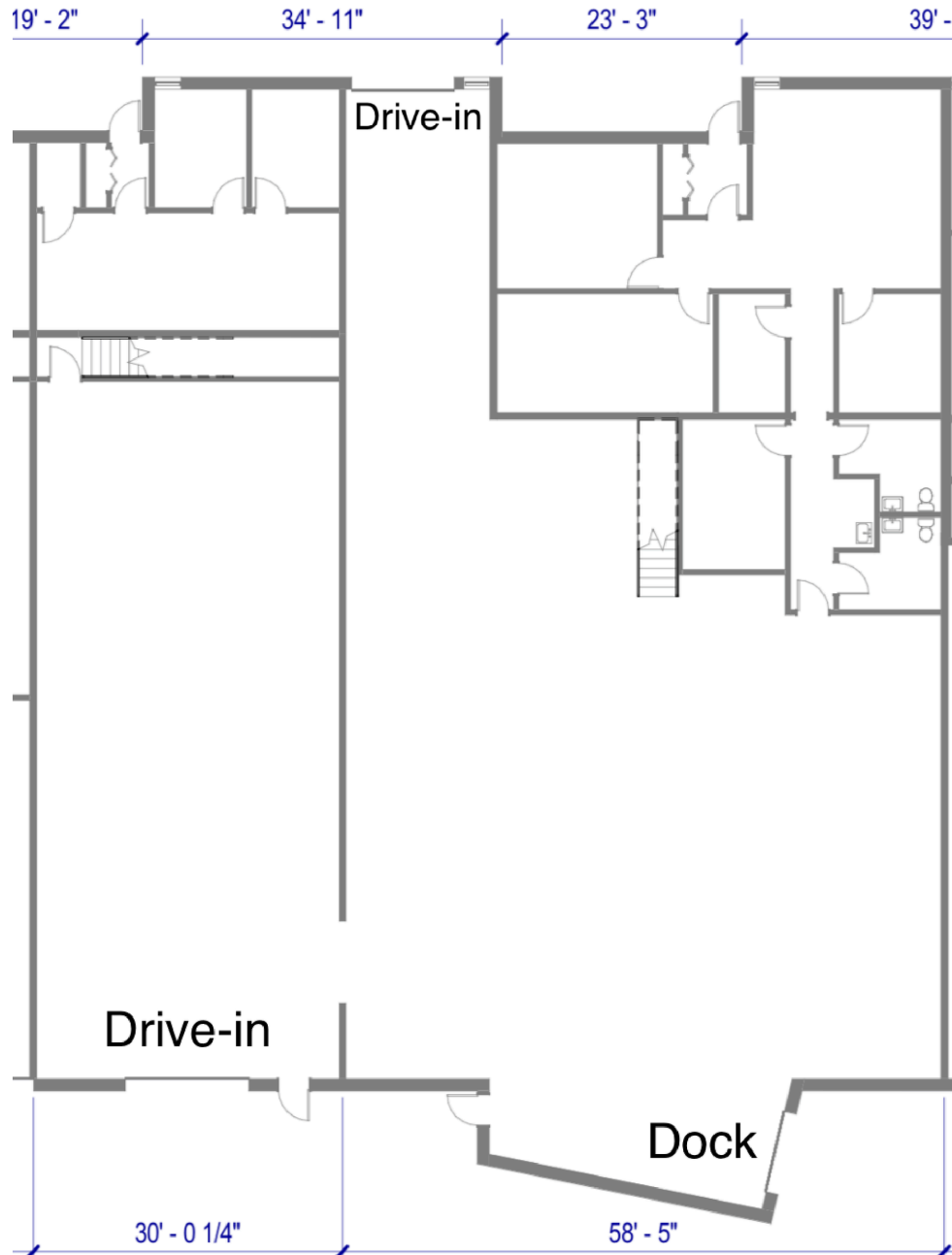
📞 612.500.7997

🌐 GONYEACOMMERCIAL.COM



FLOOR PLAN

6965 - 6967 WASHINGTON AVE SOUTH
EDEN PRAIRE, MN 55344



HUNTER STANEK

✉ HUNTER@GCPMN.COM

☎ 612.500.7997

🌐 GONYEACOMMERCIAL.COM

