

950

L'ENFANT  
PLAZA





## PROPERTY HIGHLIGHTS

- Adjacent to L'Enfant Plaza, The Square, and the new International Spy Museum  
(40+ restaurants and shops within Plaza)
- Minutes from the U.S. Capitol, National Mall, and the Wharf
- Metro Accessible (L'Enfant Metro Station)  

- 2,900-37,000+ RSF suites with private entrances available
- Signage opportunity along I-395

The logo consists of the number '950' in a white, stylized, sans-serif font. The '9' and '5' are connected at the top, and the '0' is a simple circle. A thin white horizontal line is positioned directly below the '950'.

L'ENFANT  
PLAZA

**BUILDING  
ENHANCEMENTS  
COMING SOON**

# LOBBY TRANSFORMATIONS

---

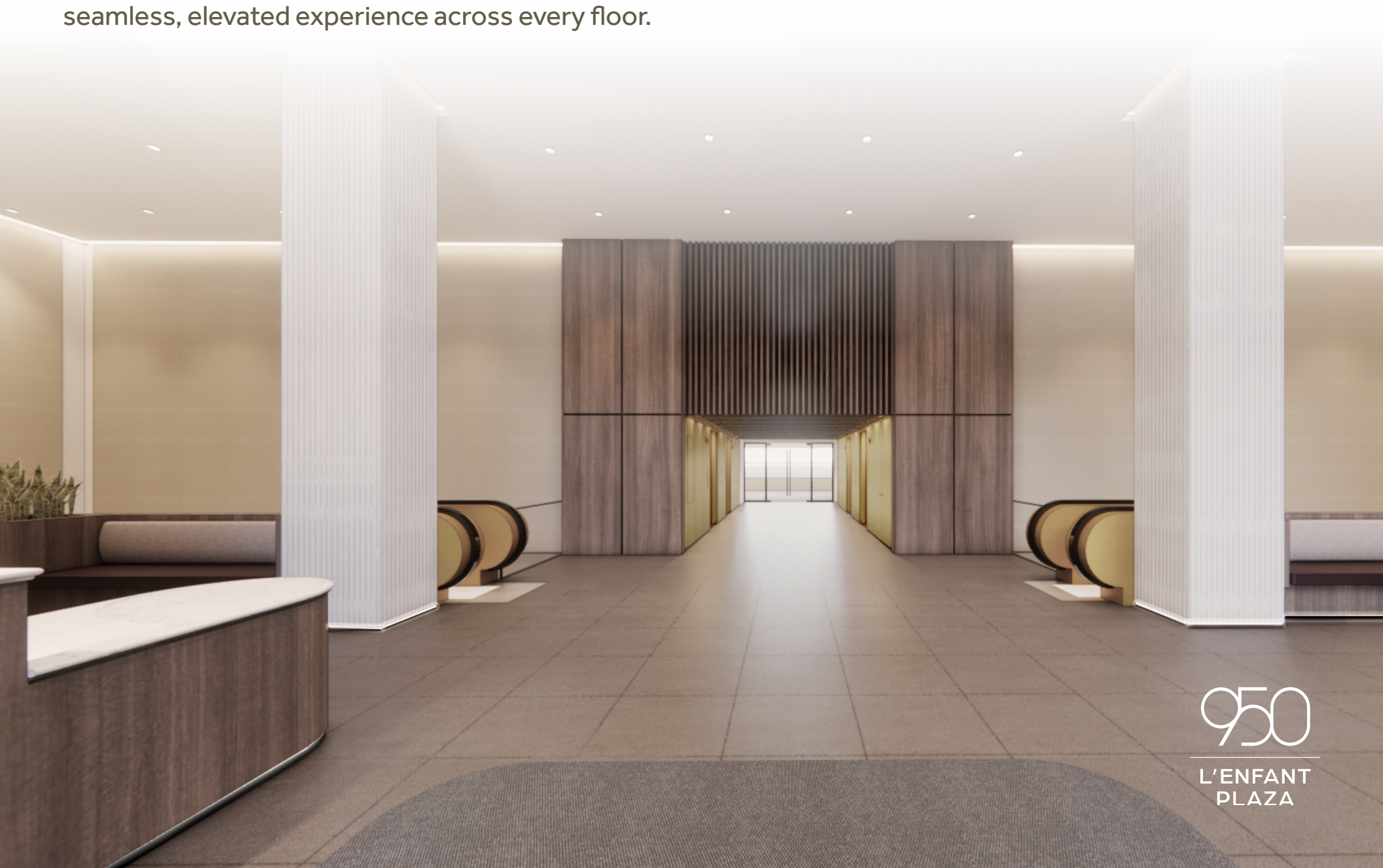
A modernized lobby with upgraded finishes, expanded lounge seating, and a dedicated attendant—designed to create a welcoming, hospitality-inspired experience.



# ELEVATOR LOBBY REDEFINED

---

Brass accents, modern lighting, and refined finishes create a seamless, elevated experience across every floor.



950

L'ENFANT  
PLAZA

# REFRESHED RESTROOMS

Modern finishes and upgraded fixtures  
deliver a clean, contemporary experience.

950

L'ENFANT  
PLAZA



EXCELLENT LOCATION ADJACENT TO L'ENFANT PLAZA + THE SQUARE

40+

RESTAURANTS, SHOPS, & ENTERTAINMENT



METRO ACCESSIBLE (L'ENFANT PLAZA)

# THE NEIGHBORHOOD

## Restaurants + Bars

- District Wharf
- Five Guys
- Au Bon Pain
- Subway
- Starbucks (3)
- Cafe 59
- Rise n' Shine
- Moe's Southwest Grill
- Rice Bar
- Vie de France
- Potbelly
- Amsterdam Falafel Shop
- Casey's Coffee
- Pizza Autentica
- L'Enfant Bar & Grill

## Retail + Convenience

- CVS (2)
- FedEx Office Print and Ship
- Wells Fargo Bank
- Golds Gym
- US Post Office

## Hotels

- Hyatt Place Washington DC/National Mall
- Residence Inn by Marriott
- Hilton Washington, DC National Mall

## Museums, Venues & Attractions

- The Anthem
- International Spy Museum
- Museum on Main Street
- Air and Space Museum
- Hirshhorn Museum
- National Museum of the American Indian
- Museums of African Art
- United States Botanic Garden



# PROMINENT VISIBILITY + SIGNAGE OPPORTUNITY FACING THE WHARF AND I-395

5 MINUTES  
TO THE WHARF



I - 395



**2,900 – 37,550+ RSF  
SUITES AVAILABLE WITH  
PRIVATE ENTRANCES**

**7TH FLOOR**  
37,550 RSF

**6TH FLOOR**  
37,550 RSF

**5TH FLOOR**  
37,550 RSF

**4TH FLOOR**  
37,550 RSF

**3RD FLOOR**  
37,550 RSF

**1ST FLOOR**  
28,112 RSF

**PROMENADE**  
36,273 RSF

**SIGNAGE OPPORTUNITY**

**LARGE BLOCK OPPORTUNITY  
FLOORS 3-7**

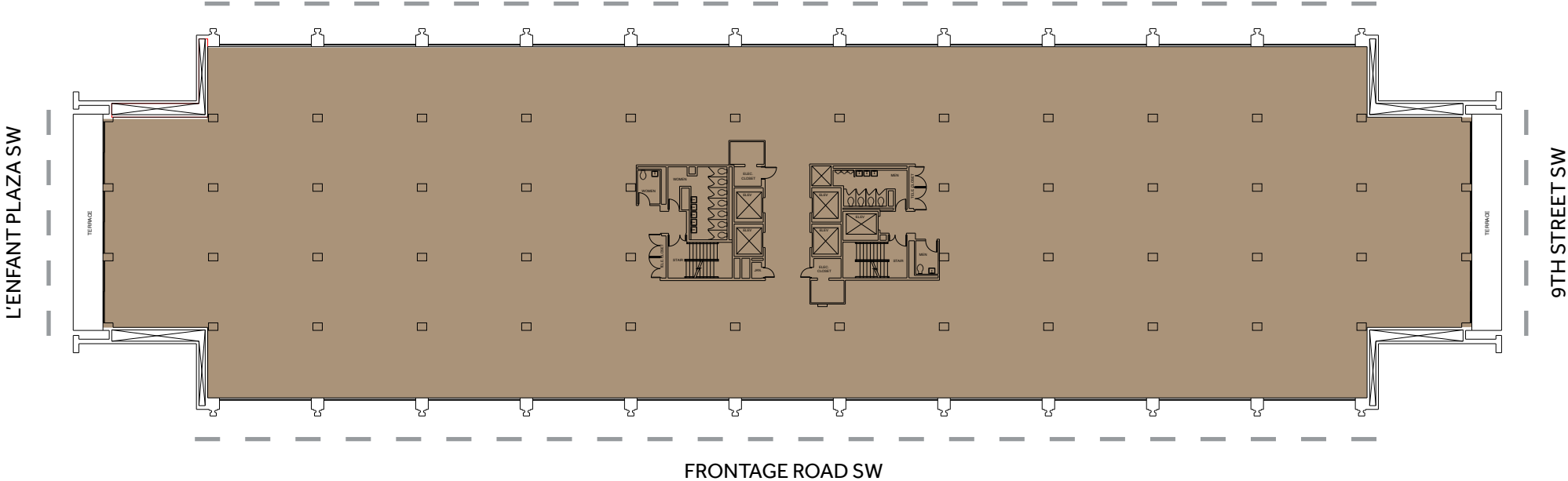
**~188,000 RSF  
OF CONTIGUOUS SPACE**

# 7TH FLOOR | 37,550 RSF

AVAILABLE NOW

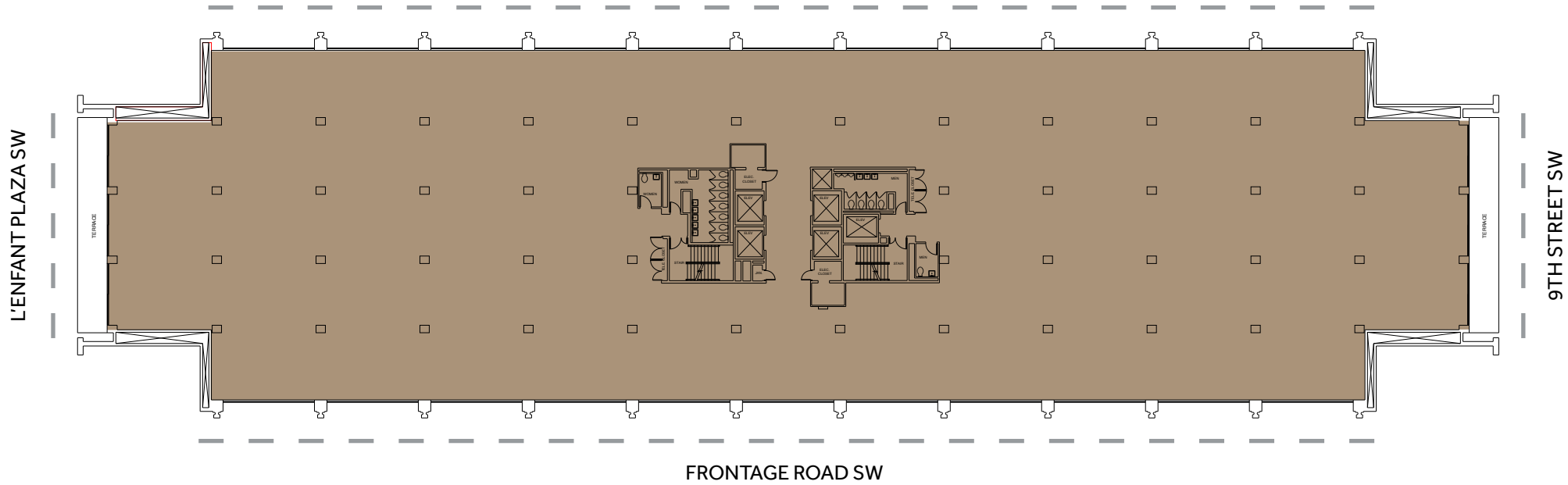
950

L'ENFANT  
PLAZA



-----  
WINDOW LINE

6TH FLOOR | 37,550 RSF  
AVAILABLE NOW



-----  
WINDOW LINE

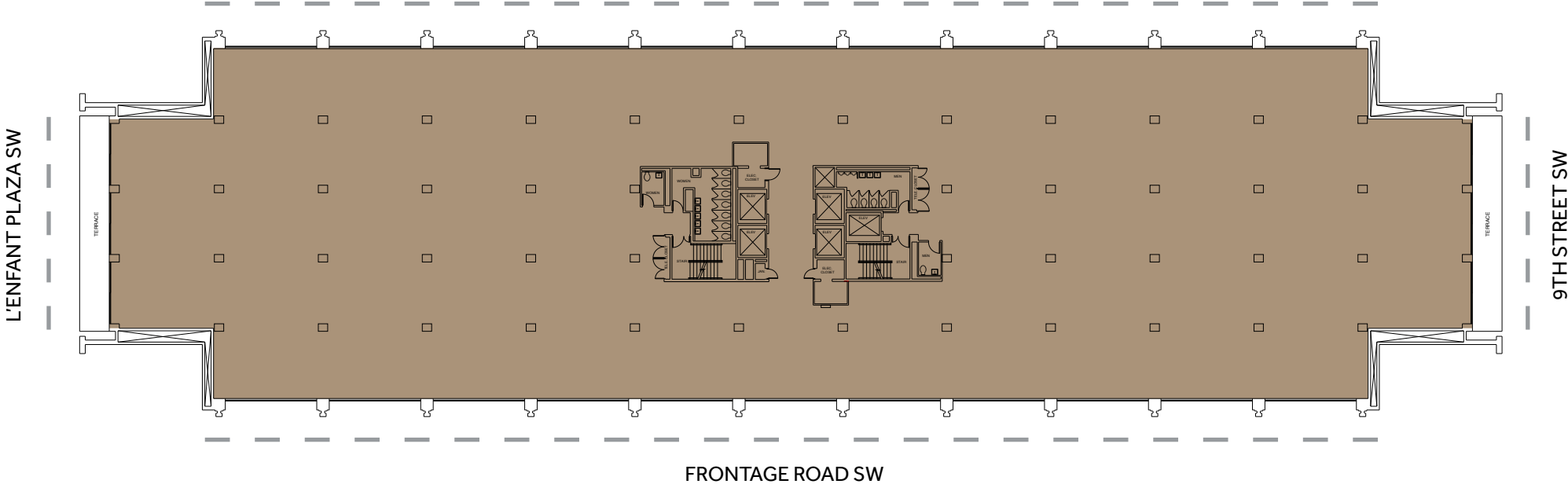


# 5TH FLOOR | 37,550 RSF

AVAILABLE NOW

950

L'ENFANT  
PLAZA



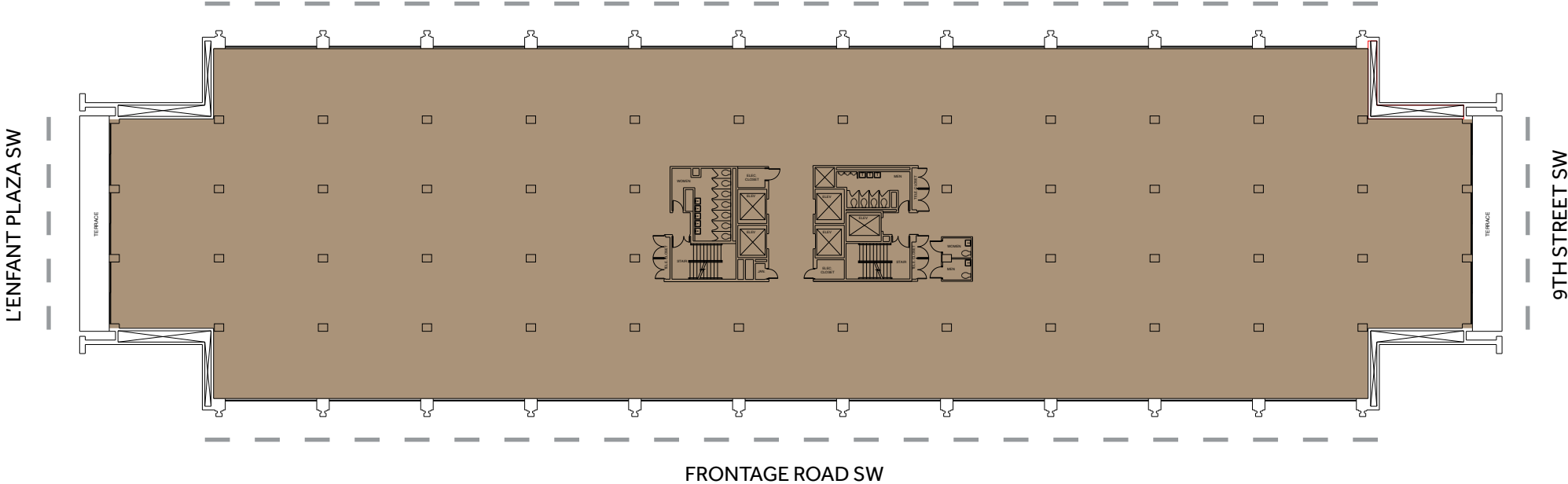
-----  
WINDOW LINE

# 4TH FLOOR | 37,550 RSF

AVAILABLE NOW

950

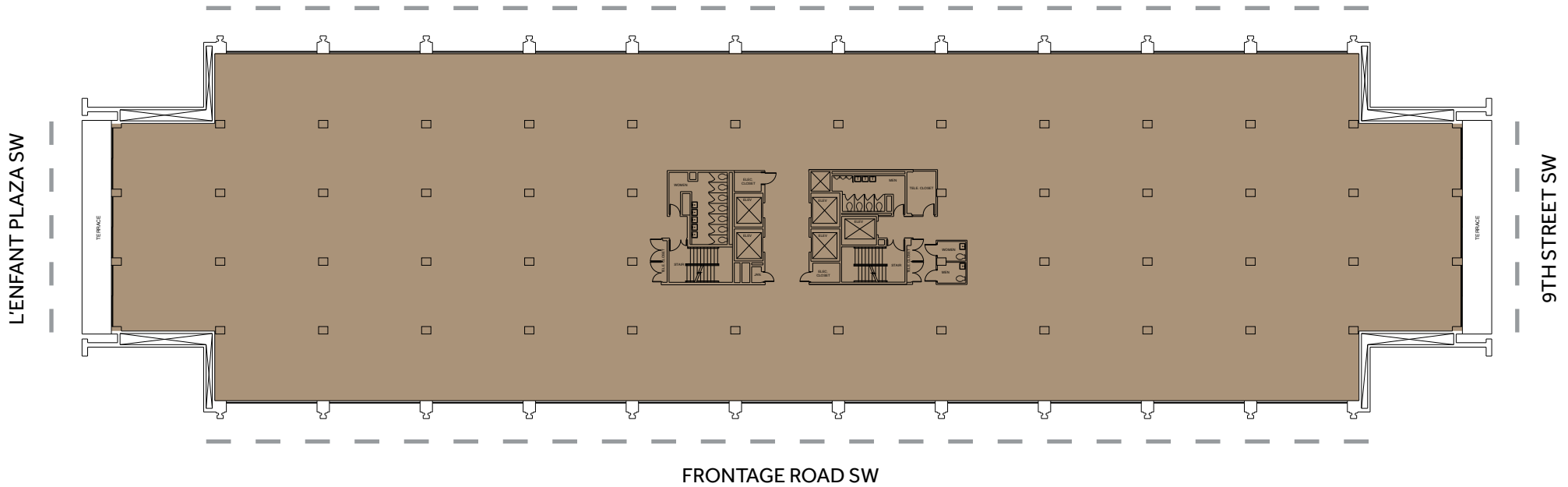
L'ENFANT  
PLAZA



WINDOW LINE



3RD FLOOR | 37,550 RSF  
AVAILABLE NOW



# 1ST FLOOR | UP TO 28,112 RSF (DIVISIBLE)

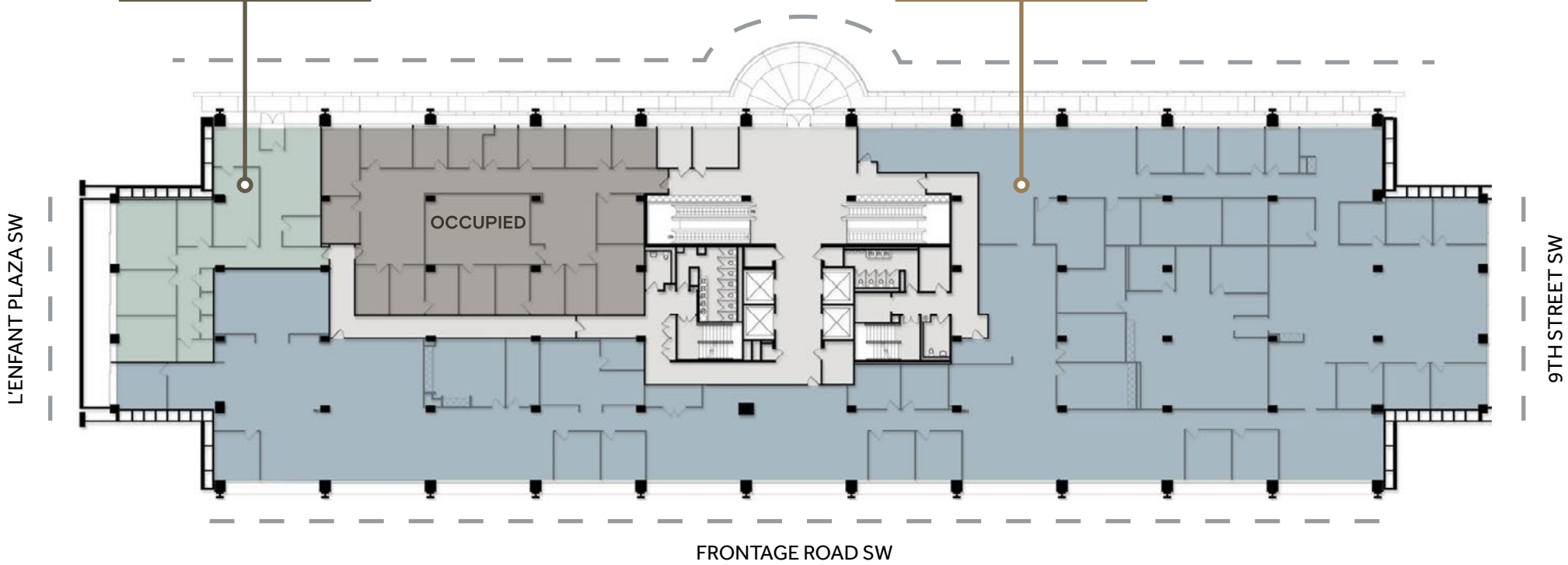
AVAILABLE NOW

950

L'ENFANT  
PLAZA

**SUITE 170**  
2,923 RSF  
AVAILABLE NOW

**SUITE 140**  
25,189 RSF  
AVAILABLE NOW



-----  
WINDOW LINE

**AVISON  
YOUNG**

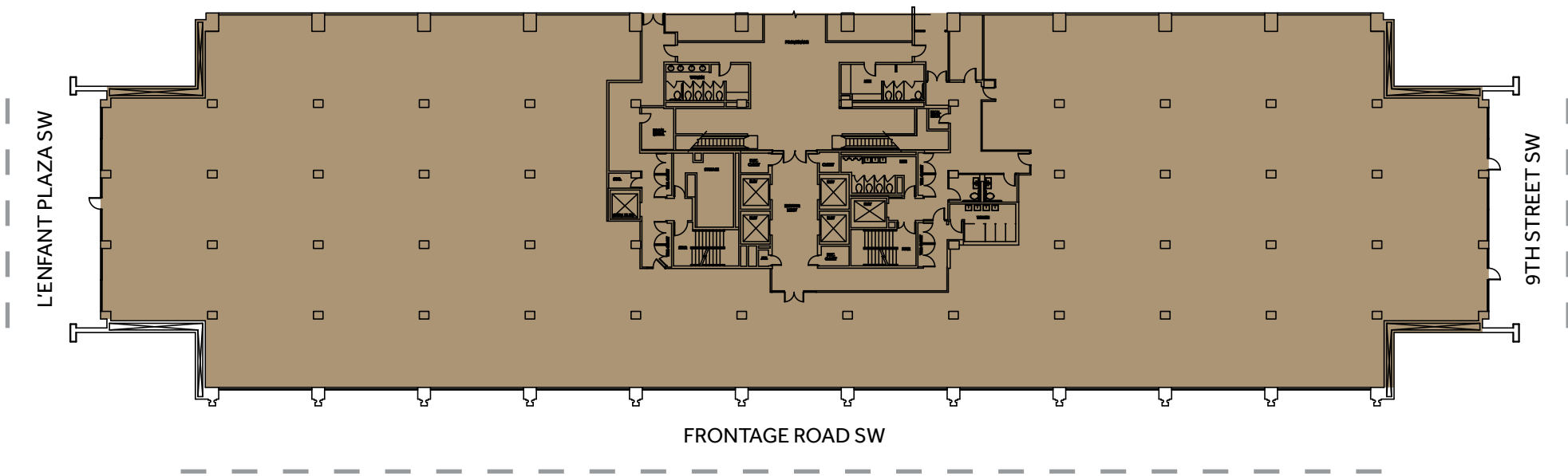
**BOYD WATTERSON**  
ASSET MANAGEMENT

# PROMENADE | 36,273 RSF

AVAILABLE NOW



L'ENFANT  
PLAZA



950

L'ENFANT  
PLAZA

# LEASING INFORMATION

## Jonathan Wellborn

Principal

202.644.8552

[jonathan.wellborn@avisonyoung.com](mailto:jonathan.wellborn@avisonyoung.com)

## Will Stern

Principal

202.644.8553

[will.stern@avisonyoung.com](mailto:will.stern@avisonyoung.com)

## Macy Parana

Senior Associate

202.644.8678

[macy.parana@avisonyoung.com](mailto:macy.parana@avisonyoung.com)

**AVISON  
YOUNG**

2001 K STREET NW  
SUITE 200 NORTH  
WASHINGTON, DC, 20006  
202.644.8700

© 2026. Avison Young. Information contained herein was obtained from sources deemed reliable and, while thought to be correct, have not been verified. Avison Young does not guarantee the accuracy or completeness of the information presented, nor assumes any responsibility or liability for any errors or omissions therein. Some imagery may have been edited using AI tools for visualization purposes.