

1100-1102  
Kermit Drive



The Oaks Tower



Garden South



For Lease  
Office Space



The information contained herein has been obtained from sources deemed to be reliable and we have no reason to doubt its accuracy or reliability; however, this information is provided without any guarantee, should be verified by interested parties, and is subject to change without notice or obligation. Horrell Company assumes no responsibility for the accuracy or reliability of the information herein.

1100-1102 Kermit Drive

Office Space For Lease

The Oaks Tower

*Just  
Reduced*

NOW \$14.00-\$15.00 PSF

Garden North

Garden South



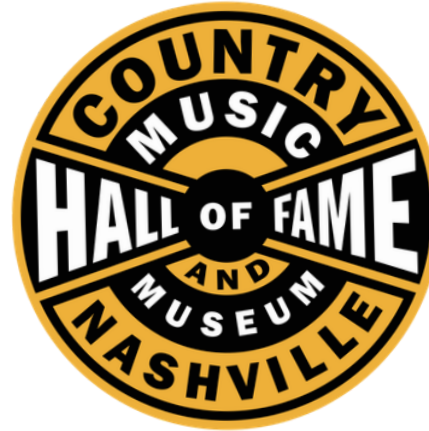
# Property Overview

ADDRESS	1100-1102 Kermit Drive Nashville, TN
SIZE	118,240 $\pm$ SF
PRICE	\$14.00 - \$15.00 PSF
AVAILABLE	1,049 $\pm$ up to 16,627 $\pm$ SF
HIGHLIGHTS	Renovated Office Spaces Conference Rooms Available Outdoor Picnic Area 4.5 per 1,000 SF Parking Ratio Turn-Key Build Out Available



## FOR LEASE

# Conveniently Located Within 15 Minutes:

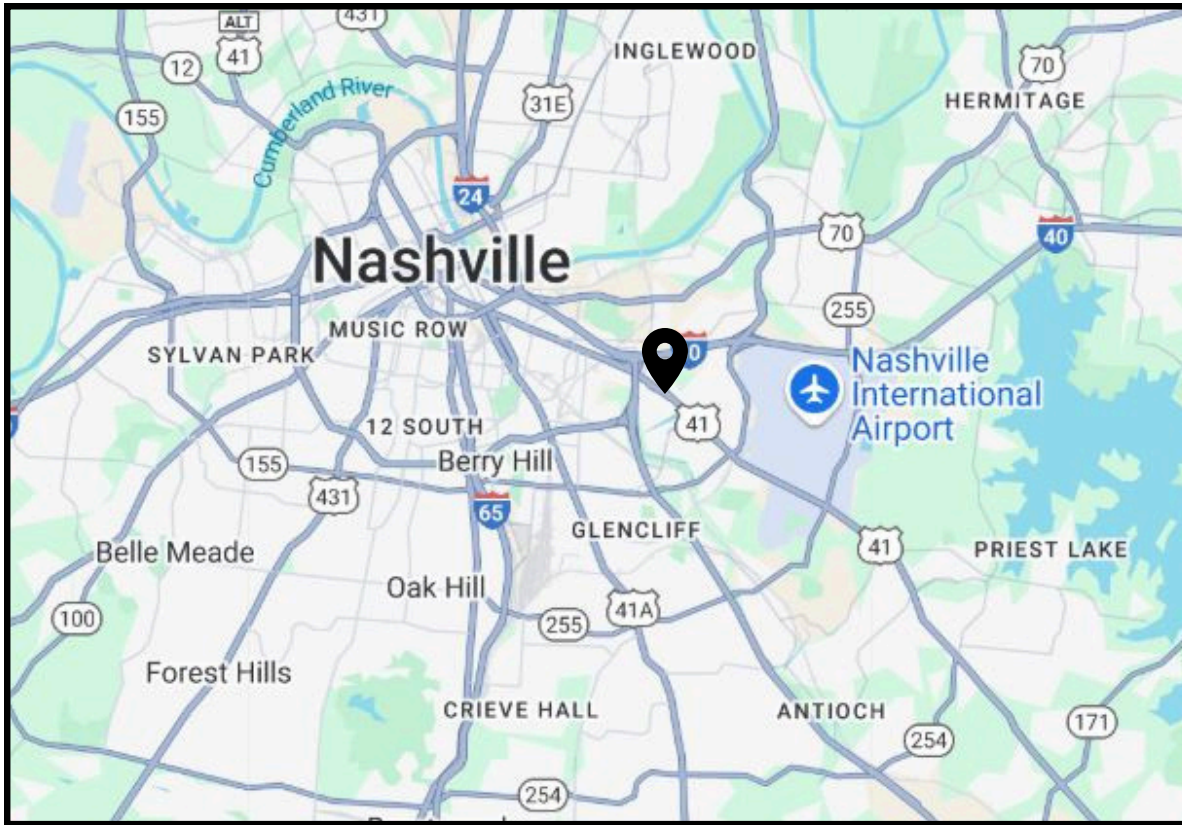


**POPEYES**



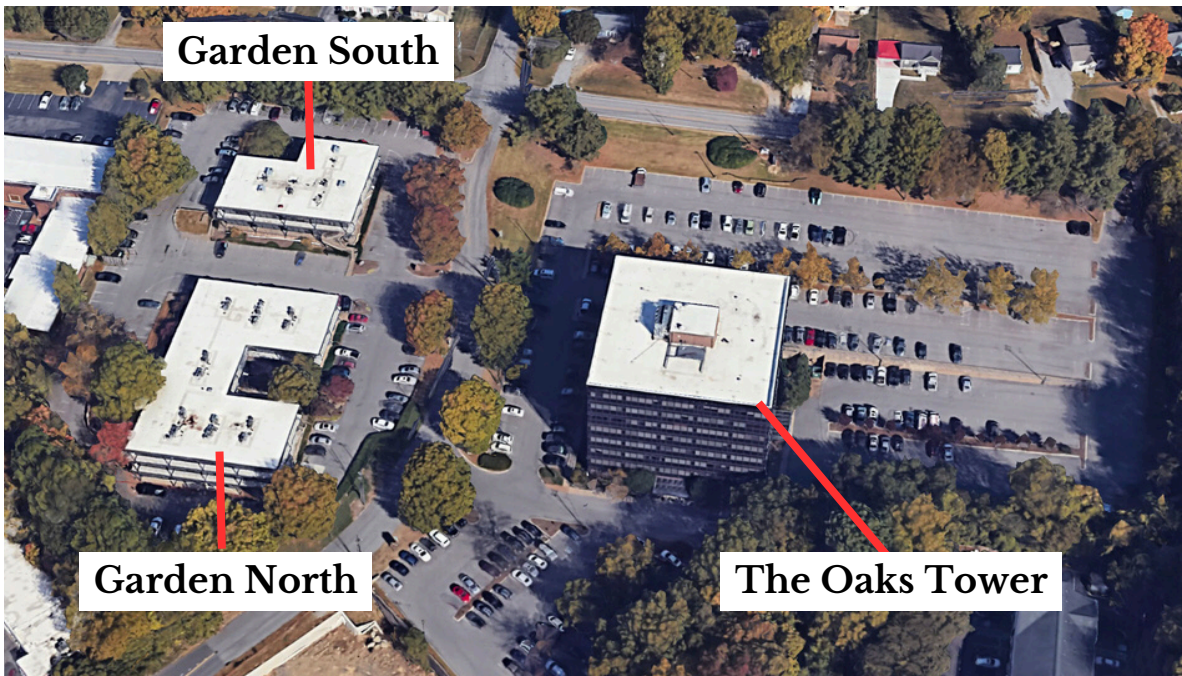
*Holiday Inn*





## Located Near:

- Nashville International Airport
- I-10
- I-65
- I-24
- I-440
- Briley Parkway

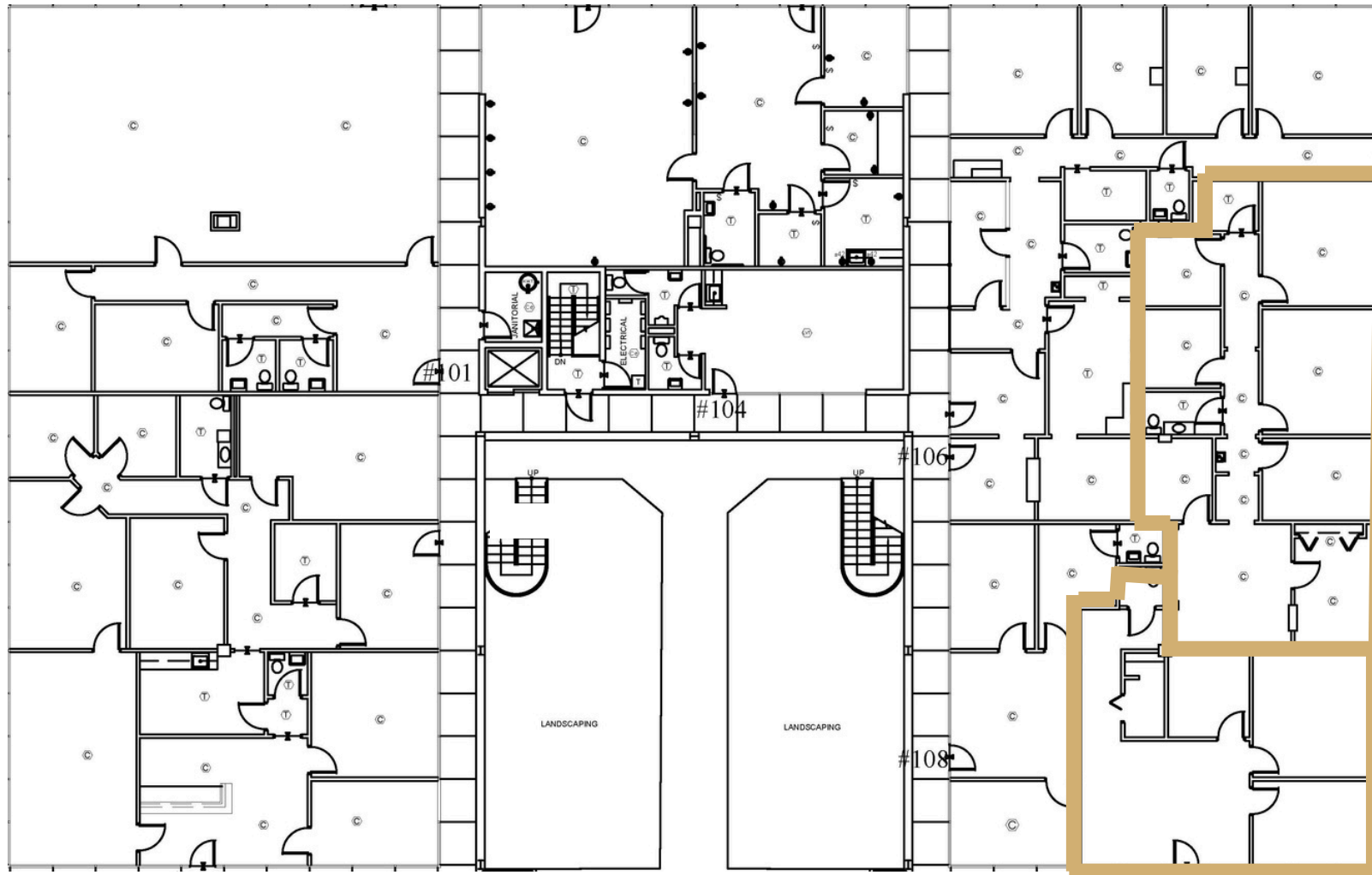


# Up To 2,787<sub>±</sub> SF Available

## The Garden South

Suite 105 & 109 | Office

Available: 60 Days



Suite 105  
1,680<sub>±</sub> SF

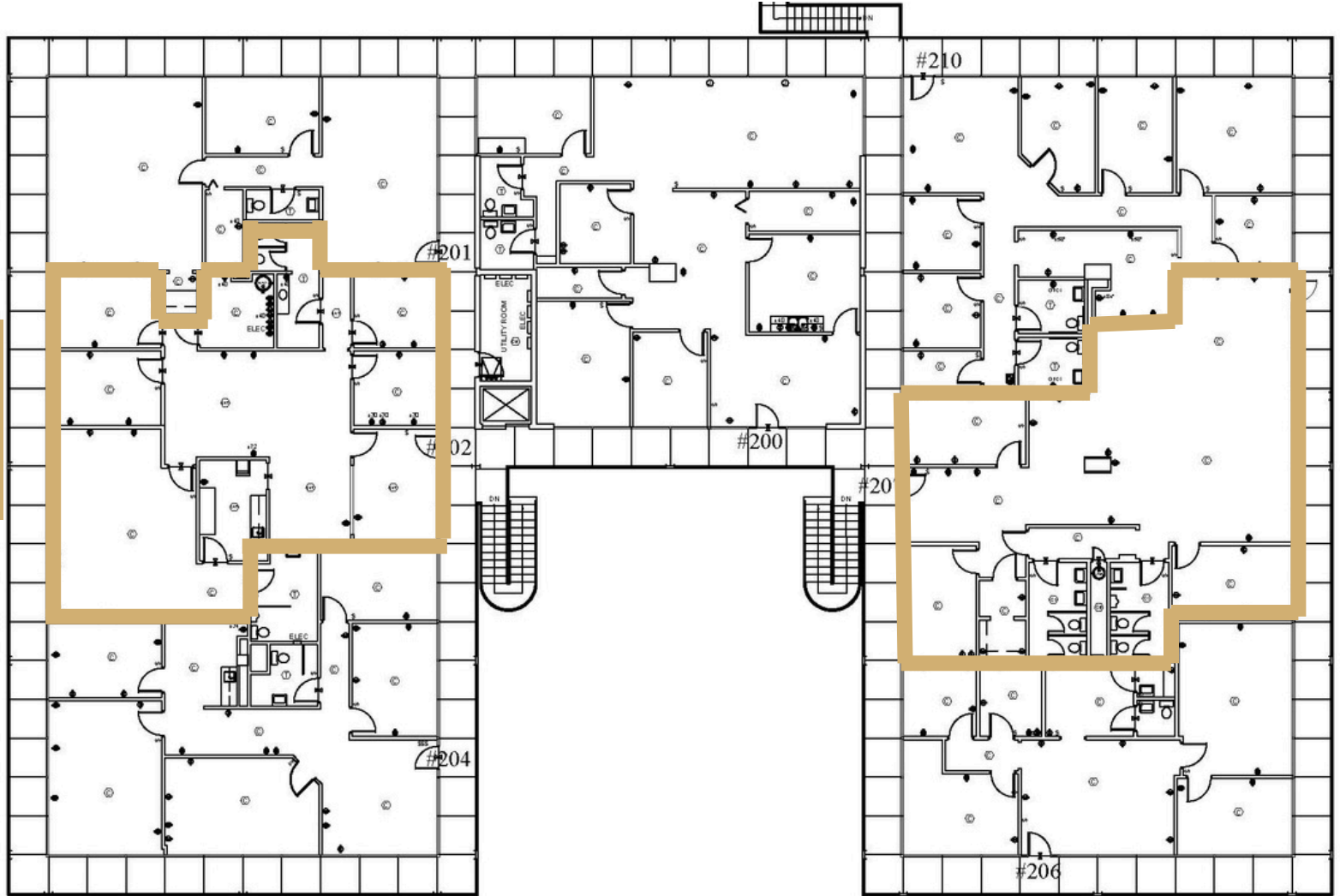
Suite 109  
1,107<sub>±</sub> SF



# The Garden South

## Suite 202 & 207 | Office

Suite 202  
2,500±  
SF



Suite 207 | 2,291± SF

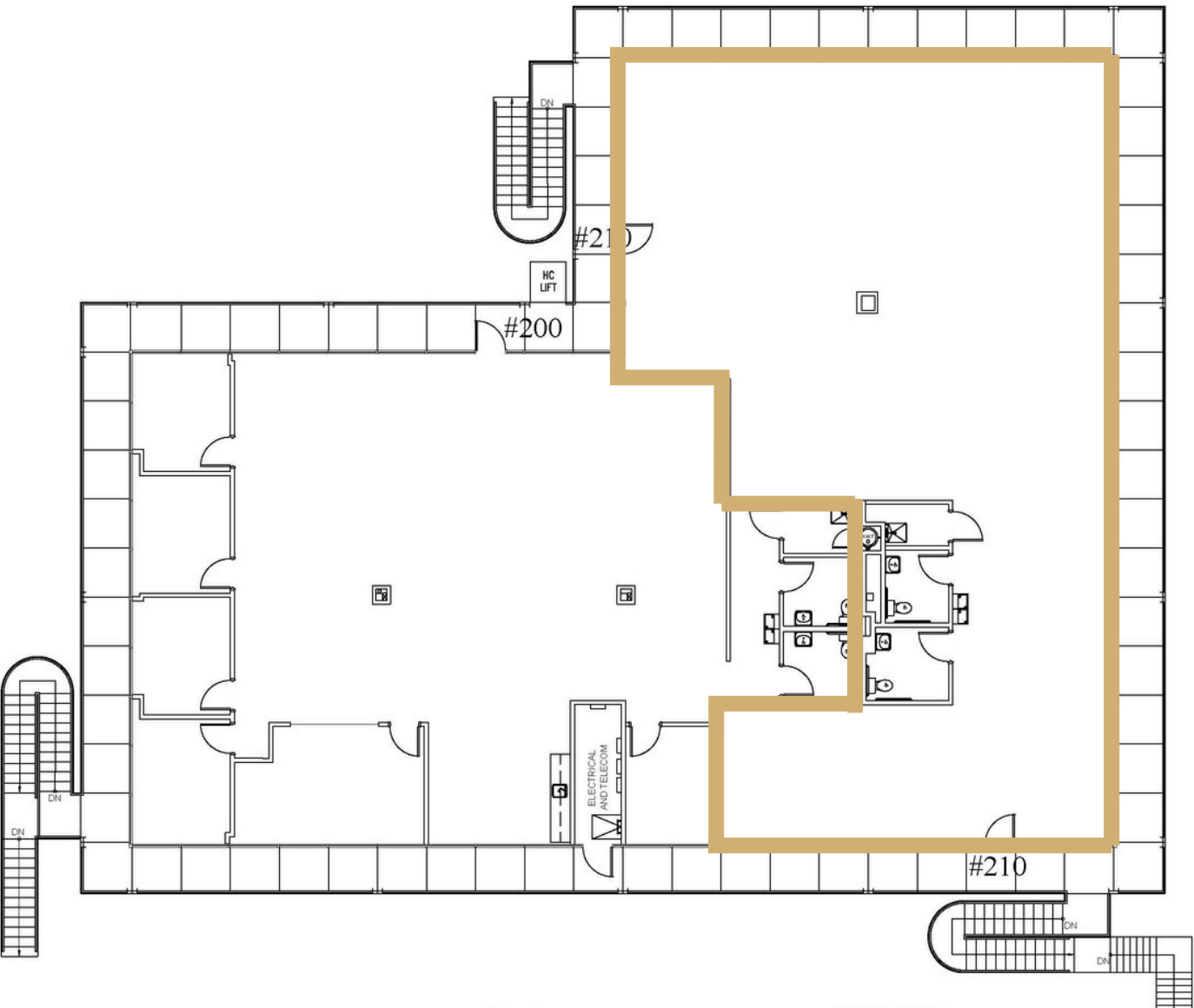
This information contained herein has been obtained from sources deemed to be reliable but is provided for demonstrative purposes only. This information is provided without any guarantee, its accuracy and reliability should be verified by interested parties, and it is subject to change without notice or obligation. Horrell Company assumes no responsibility for the accuracy or reliability of the information herein.



# The Garden North

Suite 210 | Office

Available: Now



Suite 210  
3,745<sub>±</sub> SF

This information contained herein has been obtained from sources deemed to be reliable but is provided for demonstrative purposes only. This information is provided without any guarantee, its accuracy and reliability should be verified by interested parties, and it is subject to change without notice or obligation. Horrell Company assumes no responsibility for the accuracy or reliability of the information herein.



# The Tower | First Floor



Suite 101-103  
8,351+ SF

Suite 100  
3,004+ SF

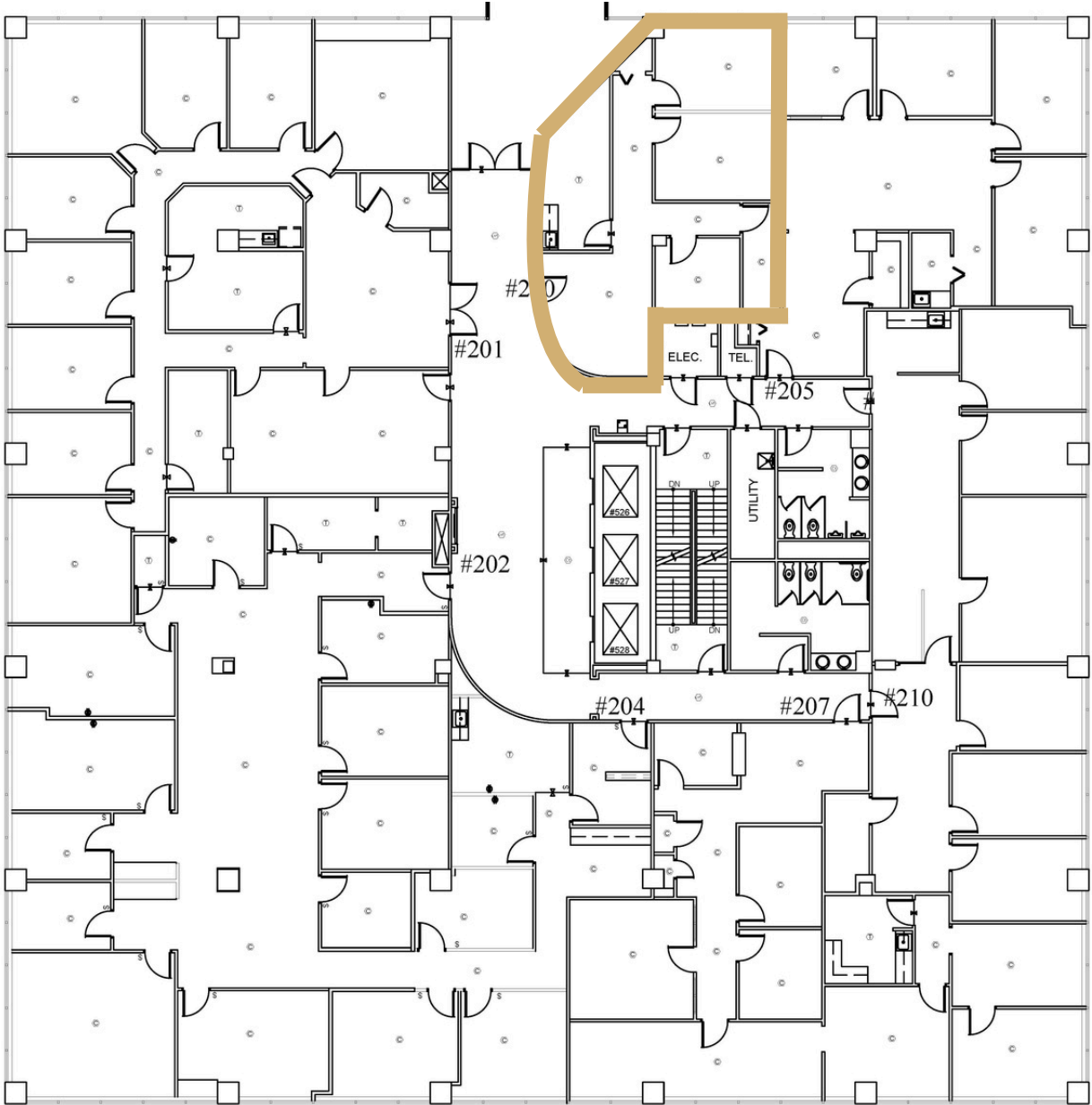


# The Tower | 2nd Floor

Suite 200 | Office

Suite 200 | 1,049± SF

Available: Now



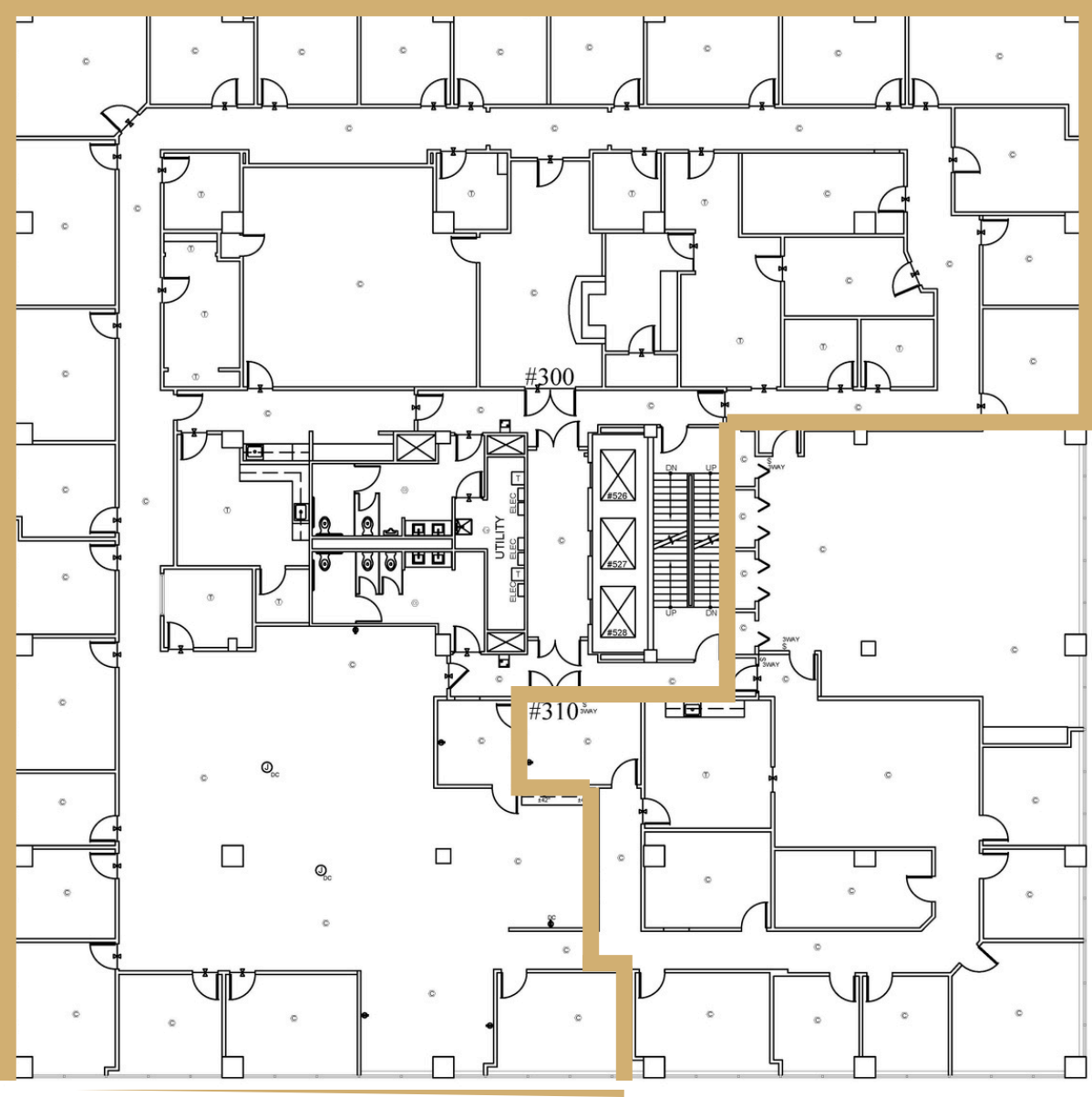
This information contained herein has been obtained from sources deemed to be reliable but is provided for demonstrative purposes only. This information is provided without any guarantee, its accuracy and reliability should be verified by interested parties, and it is subject to change without notice or obligation. Horrell Company assumes no responsibility for the accuracy or reliability of the information herein.



# The Tower | 3rd Floor

Suite 300 | Office

Available: Now



Suite 300 | 12,093<sub>±</sub> SF

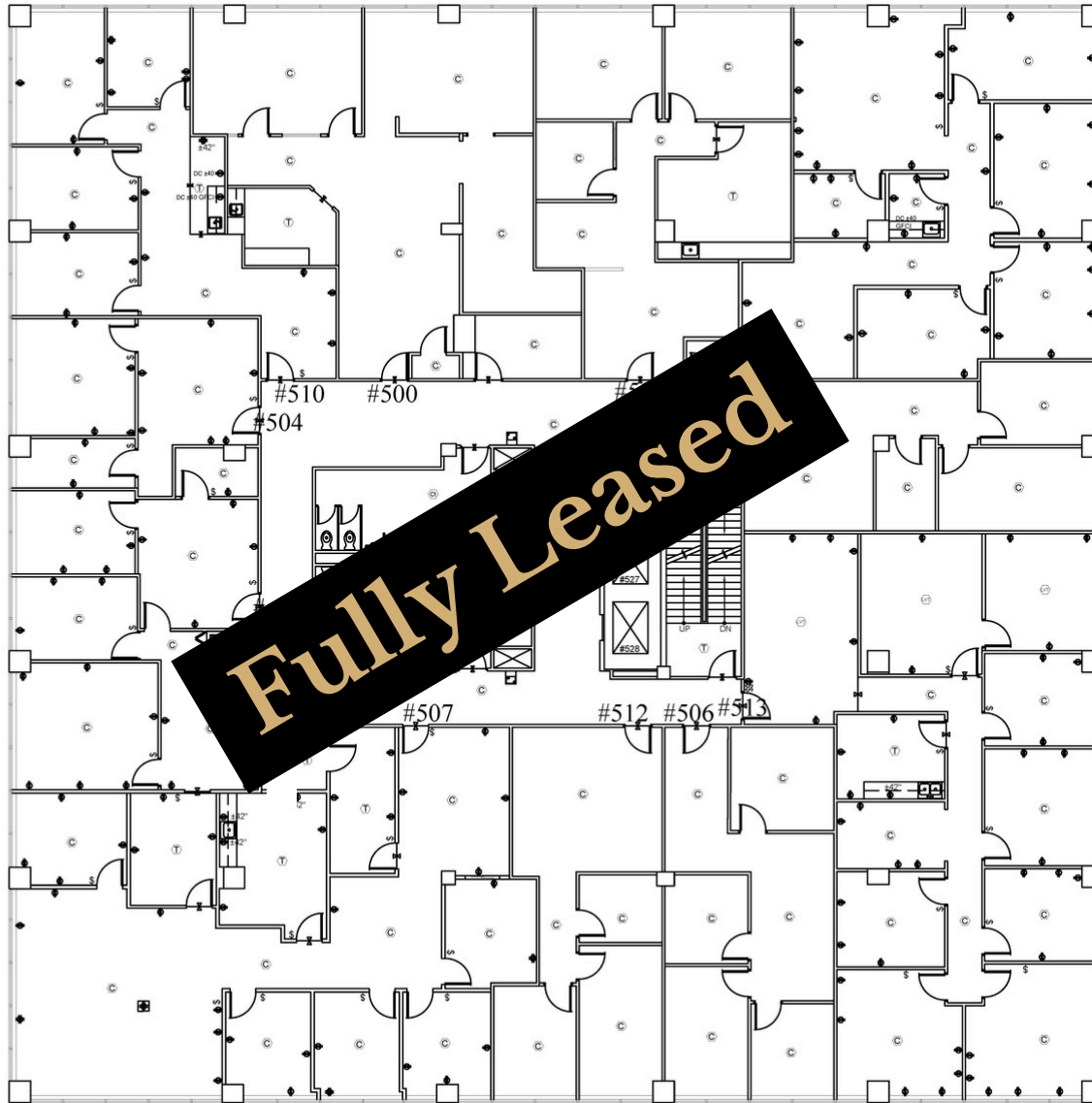
This information contained herein has been obtained from sources deemed to be reliable but is provided for demonstrative purposes only. This information is provided without any guarantee, its accuracy and reliability should be verified by interested parties, and it is subject to change without notice or obligation. Horrell Company assumes no responsibility for the accuracy or reliability of the information herein.



# The Tower | 4th Floor



# The Tower | 5th Floor

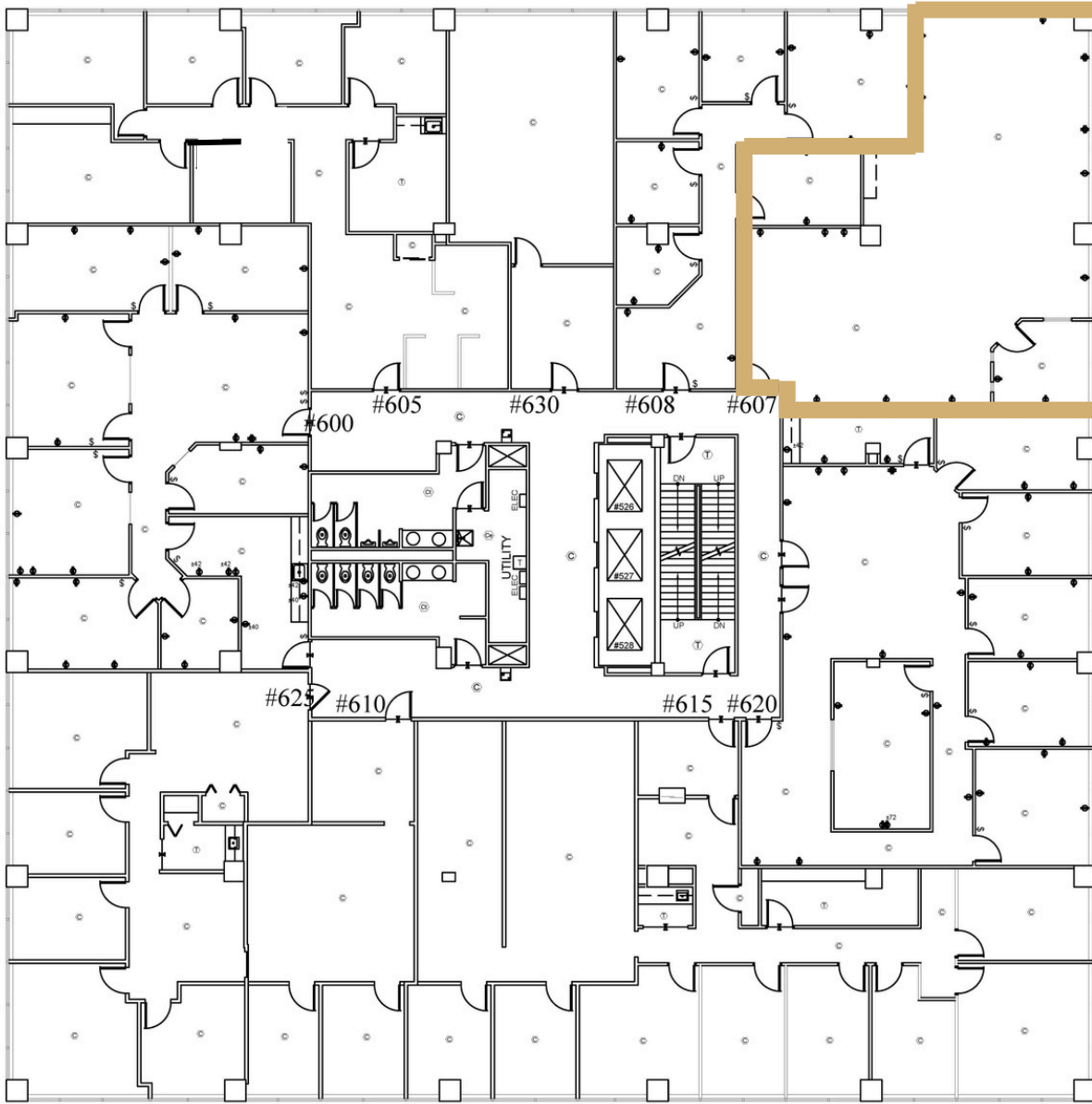


# The Tower | 6th Floor

Suite 607 | Office

Available: Now

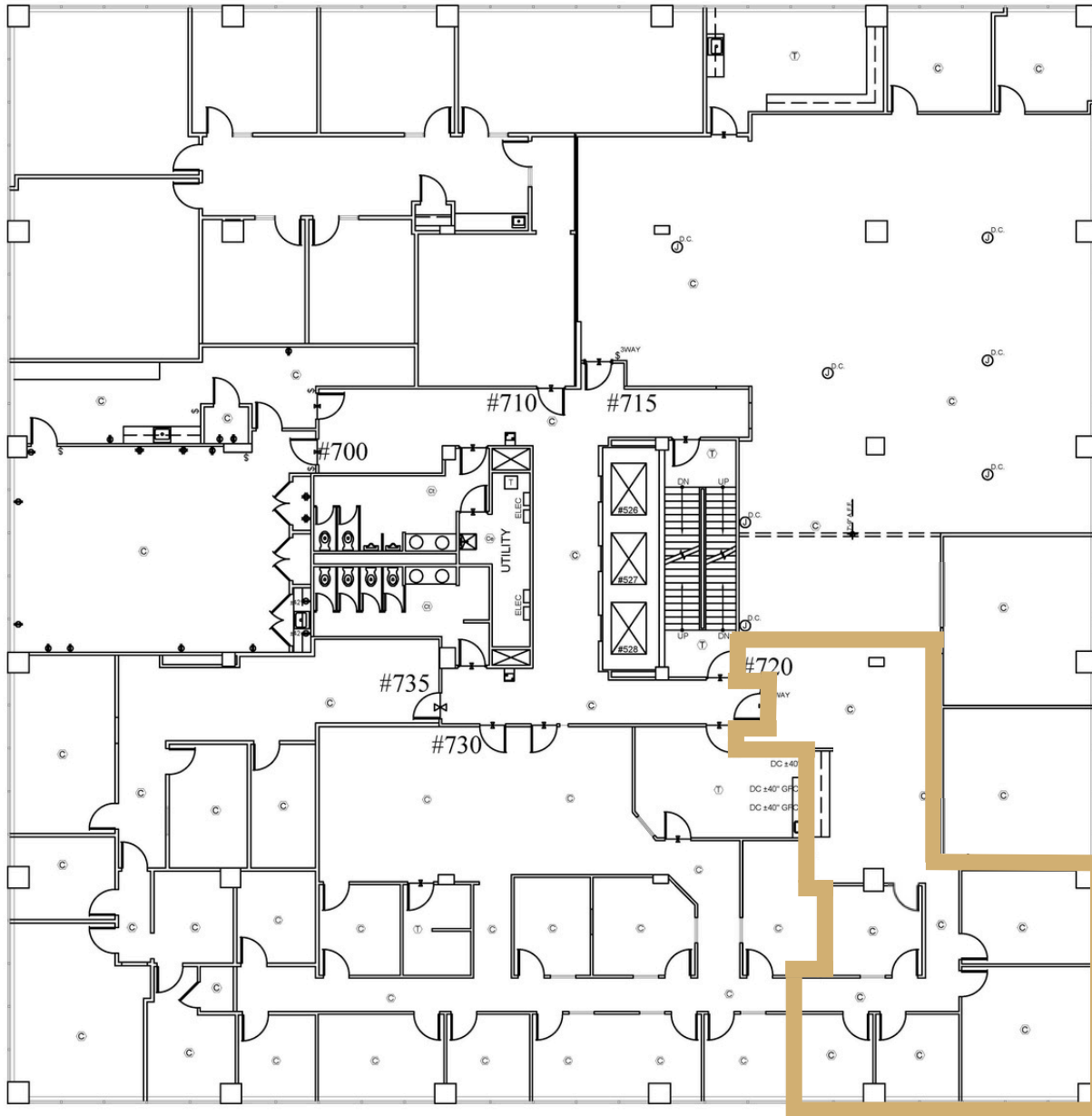
Suite 607 | 1,662 $\pm$  SF



# The Tower | 7th Floor

Suite 720 | Office

Available: Now



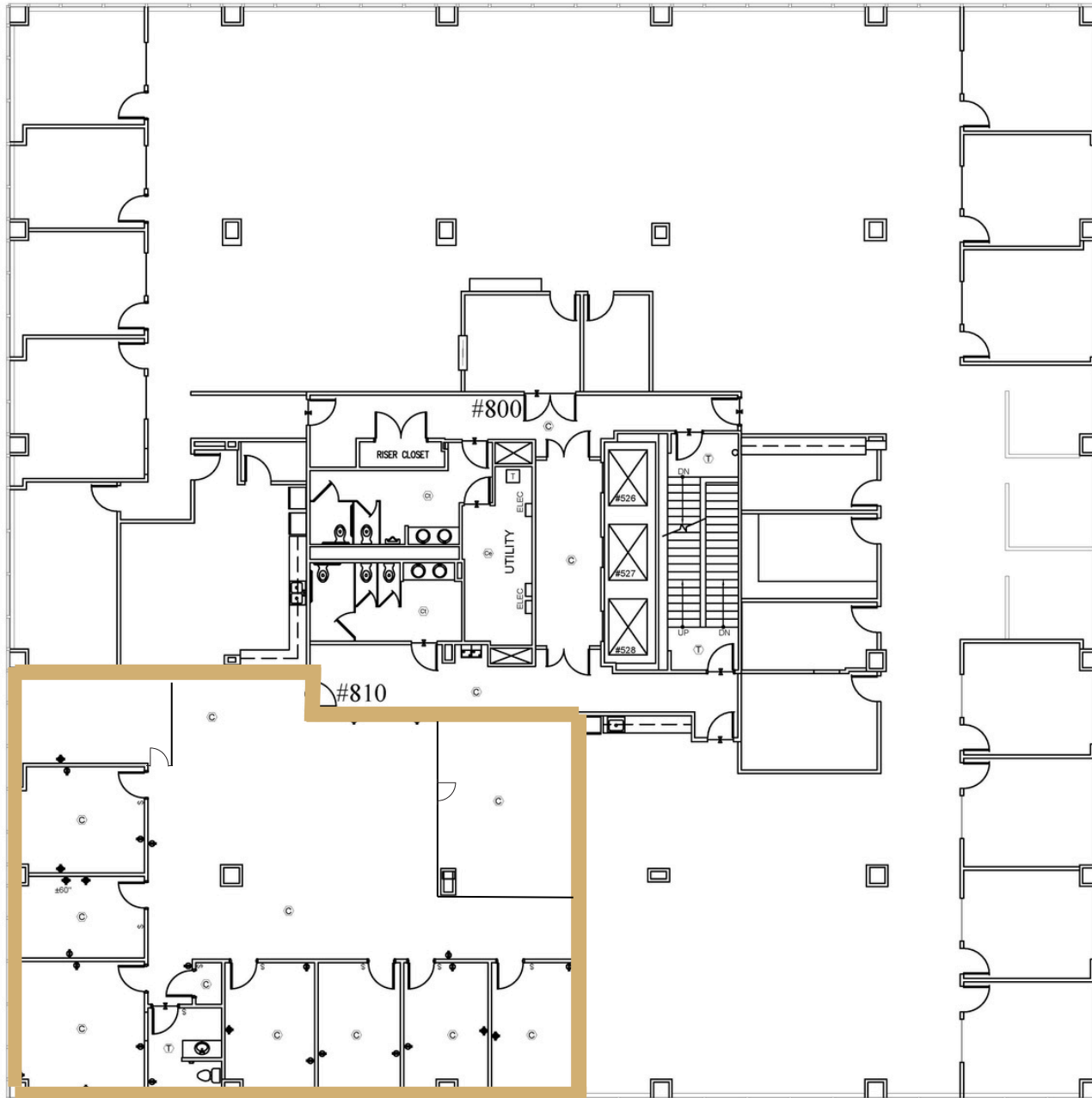
Suite 720 | 1,608 $\pm$  SF



# The Tower | 8th Floor

Suite 810 | Office

Available: Now



Suite 810 | 3,590<sub>±</sub> SF





# Contact Me

Laura Grider

M 615-604-7425

O 615-256-7114

[lgrider@horrellcompany.com](mailto:lgrider@horrellcompany.com)



3030 Sidco Drive  
Nashville, TN 37204

[www.horrellcompany.com](http://www.horrellcompany.com)