



# Mt. Pleasant Commerce Center

13200–13207 Globe Drive  
Mt. Pleasant, WI 53177



## About the Property

Mt. Pleasant Commerce Center is an 18-acre mixed-use business community located near the intersection of WI 20 (Washington Avenue) and Interstate 94/41 in Mt. Pleasant, Wisconsin. The business community is comprised of five buildings, totaling more than 211,800 square feet of office and flex/R&D space.



### Flex/R&D Buildings

13203 Globe Drive	39,400 SF
13205 Globe Drive	39,400 SF
13207 Globe Drive	32,156 SF

### Building Specifications

Ceiling Height	16 ft. clear minimum
Parking	2.3 spaces/1,000 SF
Construction	Masonry
Loading	Dock or drive-in
Zoning	C-4

### Office Buildings

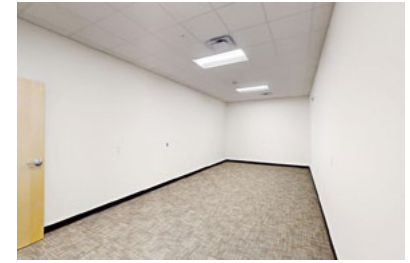
13200 Globe Drive   200	46,545 SF
13200 Globe Drive   100	54,329 SF

### Building Specifications

Ceiling Height	12 ft. clear minimum
Parking	4.5 spaces/1,000 SF
Heat	Natural Gas
Roof	EPDM rubber
Construction	Masonry
Zoning	C-3

For more information on Mt. Pleasant Commerce Center, visit: [sjpi.com/mtpleasantcommerce](https://sjpi.com/mtpleasantcommerce)

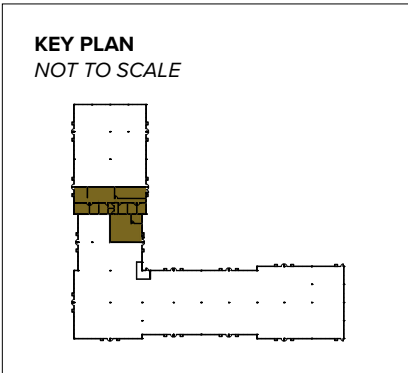
**Mt. Pleasant Commerce Center**  
13200 Globe Drive | Building 200 | Mt. Pleasant, WI 53177  
Suites 204 & 226-227



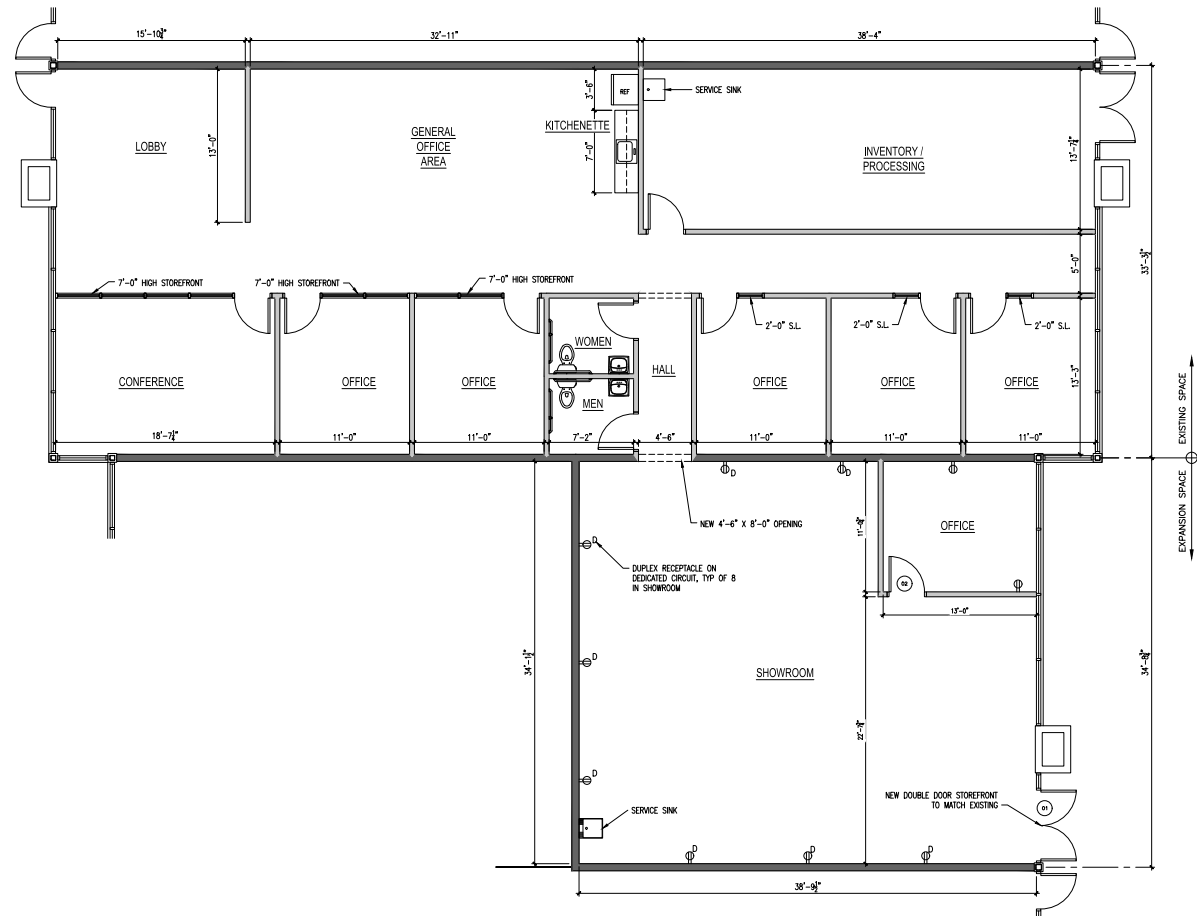
**Total SF Available:**  
4,463 SF

Private offices (6), conference room, showroom, lobby, and open office area

**CLICK TO VIEW VIRTUAL TOUR**



**Note:** This space plan is subject to existing field conditions. This drawing is proprietary and the exclusive property of St. John Properties, Inc. Any duplications, distribution, or other unauthorized use is strictly prohibited.



# Availabilities

## Flex/Office Space at Mt. Pleasant Commerce Center

1,134–22,594 sq. ft.	13207 Globe Drive	Ste. 303(front)-312	First generation Flex/R&D building, drive-in doors, shared ramp for dock loading
1,413 sq. ft.	13200 Globe Drive   200	Ste. 226	Open office space with a private office (1) and kitchenette
2,844 sq. ft.	13203 Globe Drive	Ste. 106	1,422 sq. ft. of office-showroom, 1,422 sq. ft. of warehouse with a 10'x12' drive-in door (1)
2,984 sq. ft.	13207 Globe Drive	Ste. 301	First generation Flex/R&D building, drive-in doors, shared ramp for dock loading
3,050 sq. ft.	13200 Globe Drive   200	Ste. 204 & 227	Private offices (5), conference room (1), training room (1), and open office area
4,463 sq. ft.	13200 Globe Drive   200	Ste. 204 & 226-227	Private offices (6), conference room, showroom, lobby, and open office area
4,564 sq. ft.	13200 Globe Drive   100	Ste. 110 & 129–130	New single-story office building, build to suit; excellent visibility from Highway 20

## Contact Us

### Gregory Fax

Regional Partner, Wisconsin

GFax@sjpi.com | 262.524.0100

### Wisconsin Regional Office:

2000 Pewaukee Road | Suite A

Waukesha, WI 53188



262.524.0100 | [SJPI.COM/WISCONSIN](http://SJPI.COM/WISCONSIN)

This information contained in this publication has been obtained from sources believed to be reliable. St. John Properties makes no guarantee, warranty or representation about this information. Any projections, opinions, assumptions or estimates used here are for example only and do not represent the current or future performance of the property. Interested parties should conduct an independent investigation to determine whether the property suits their needs. REV 12/25