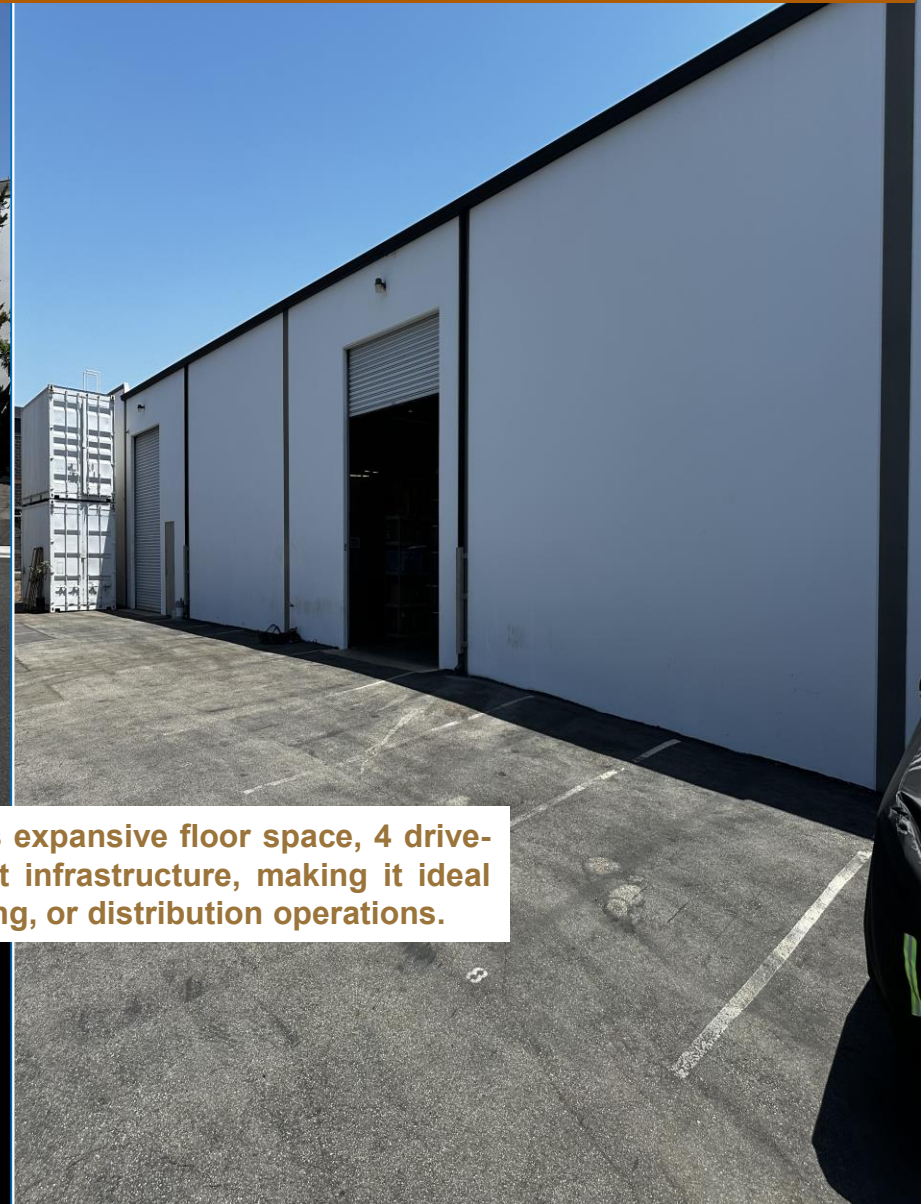
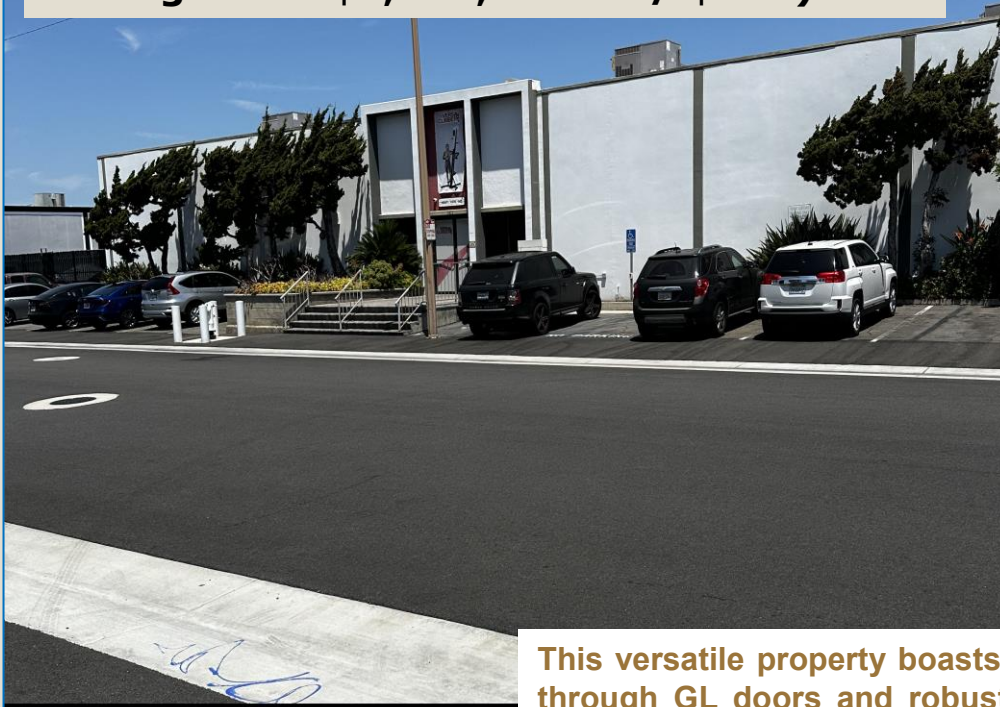


1411 E. Wilshire Ave., Santa Ana, CA 92715

For Sale
17,550 SF Industrial Building
Asking Price: \$6,738,200.00 / (\$384)



This versatile property boasts expansive floor space, 4 drive-through GL doors and robust infrastructure, making it ideal for manufacturing, warehousing, or distribution operations.



1411 E. Wilshire Ave., Santa Ana, CA 92715



Building Specifications

- 17,550 SF
- .75 Acre Lot – 32,496 SF
- Clear Height: 15'3" to 18'
- 4 Ground Level Doors (8" wide x 14' High), Drive Through
- 600 Amps of Power
- 2 Fenced and Secure Yards, 1 private, 1 shared
- Zoning M-1
- Parcel number 014-451-17
- Sprinklers- Yes
- Office size 2,600 SF
- Built 1970
- High bay LED lighting
- 5 Skylights
- 4 restrooms
- Shower
- Video Room
- 32 + Parking Spaces

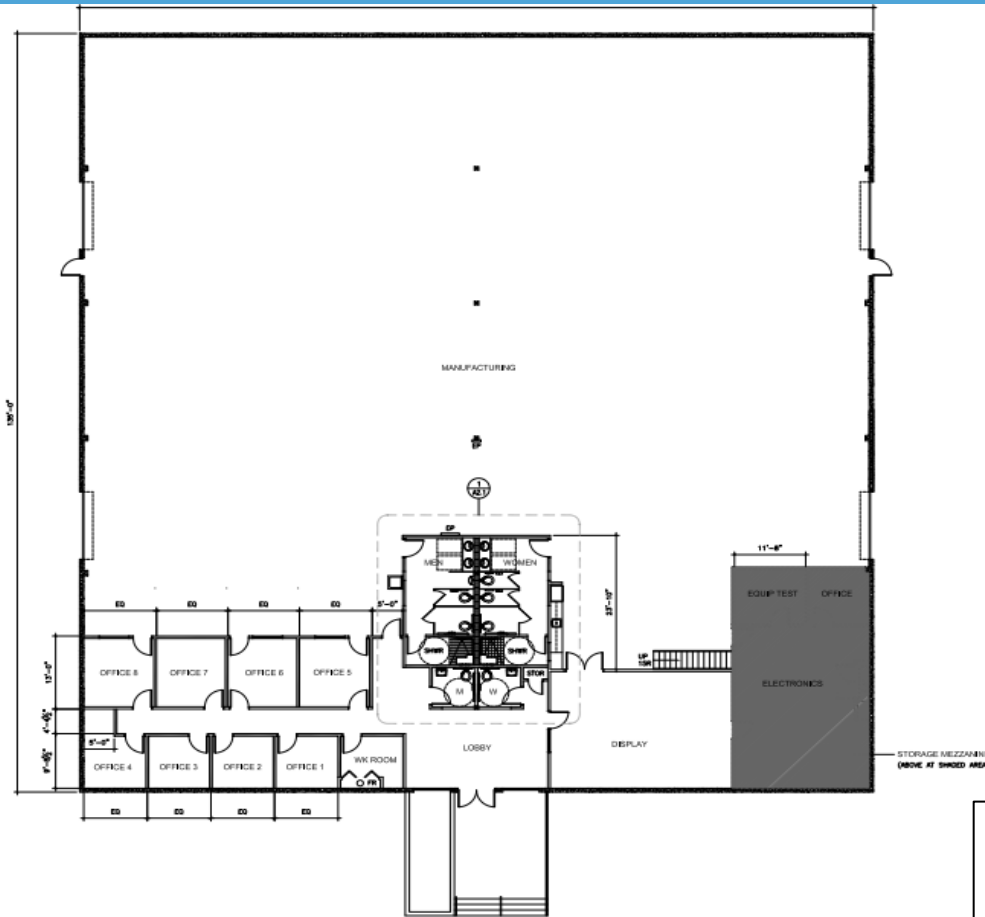
This is a unique opportunity to invest in a facility that not only meets current demands but also offers potential for future growth. Don't miss out on securing a valuable asset in a competitive market!



FLOOR PLANS

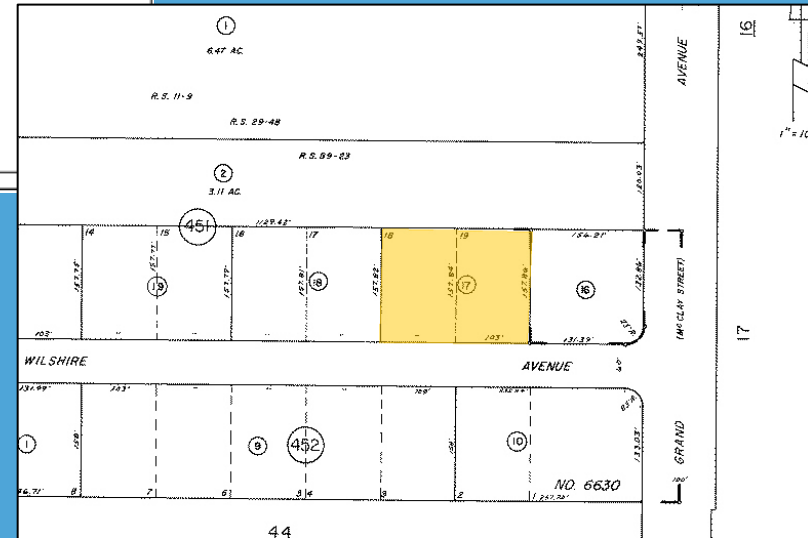
Featuring:

- 2,600 SF of Office
- 8 Private offices (4 with warehouse access)
- Reception
- Demonstration Room
- Video Room
- 4 Restrooms / Shower
- Security / Door motion Sensors
- 2 Package HVAC Units on the roof

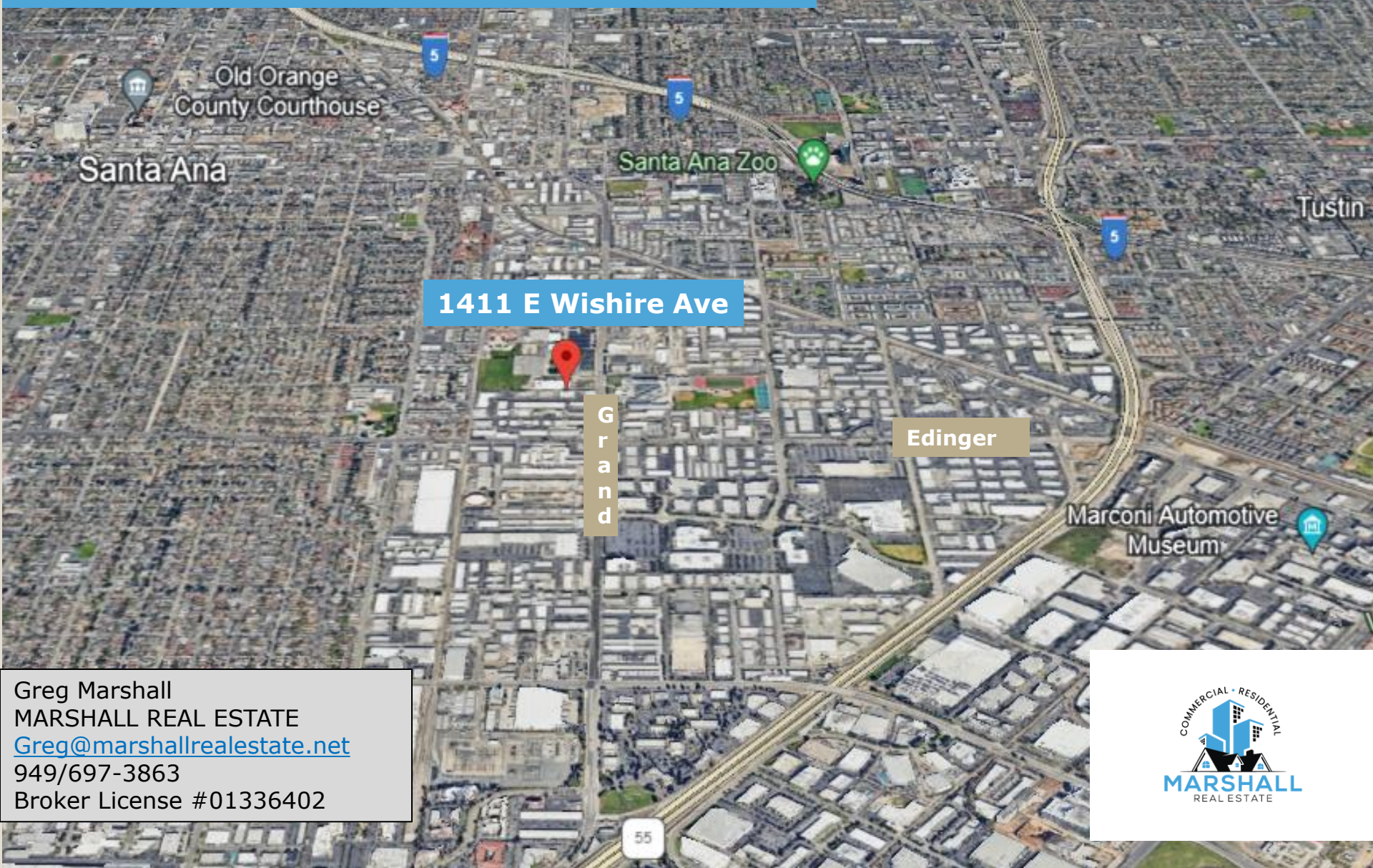


TENANT IMPROVEMENT PLAN

With modern amenities and ample parking, it caters to a wide range of business needs. The surrounding area features a growing workforce and proximity to essential services, enhancing operational efficiency.



Strategically located in a thriving commercial hub, offering unparalleled accessibility to major highways and transportation networks.



1411 E Wishire Ave

G
r
a
n
d

Edinger

Marconi Automotive
Museum

Greg Marshall
MARSHALL REAL ESTATE
Greg@marshallrealestate.net
949/697-3863
Broker License #01336402



This information has been obtained from sources we deem reliable, but we make no representation or warranties, express or implied, as to the accuracy of the information. Buyer must verify all information and bears all risk for any inaccuracies.