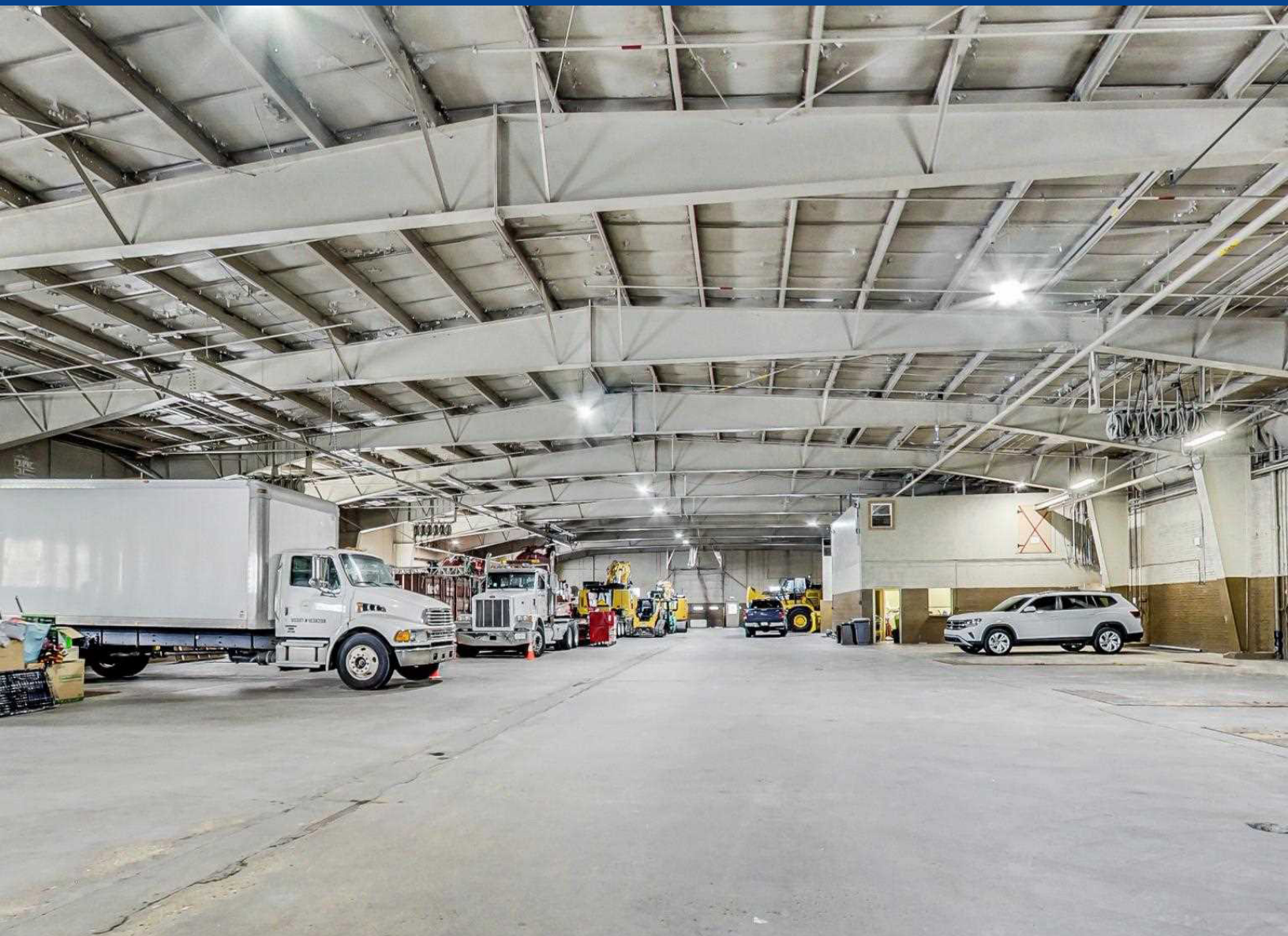


Industrial For Sale/Lease Truck Maintenance/Storage Facility



526 E. 114th Place
Chicago, IL

Contact us:

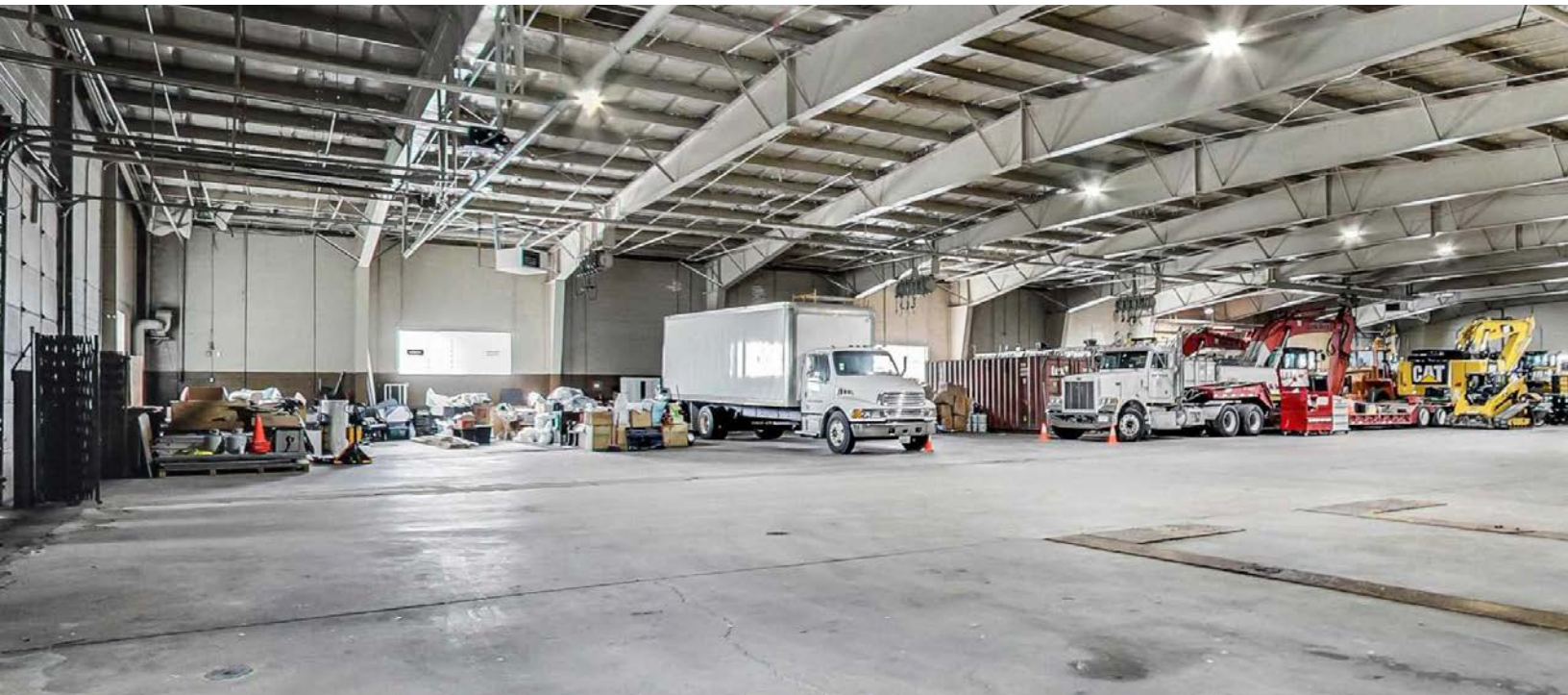
Peter Bourke

+1 847 698 8252

peter.bourke@colliers.com

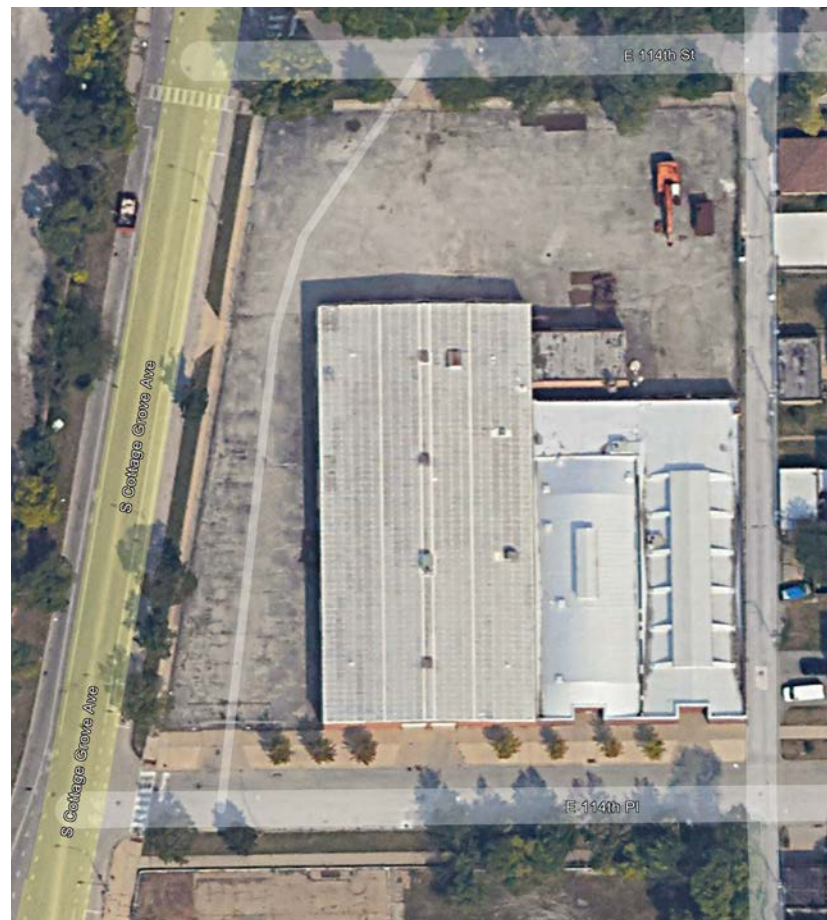


6250 N. River Road, Suite 11-100
Rosemont, IL 60018
colliers.com



Property Overview

- 37,457 SF industrial building
- 7,300 SF office
- 1.7 acre lot
- 5 grade doors
- 14' to 24' clear height
- Both warehouse buildings are clear span
- Multiple truck lifts
- Sprinklered
- Half mile to I-94
- Less than 3 miles to I-57
- 8 miles to I-80
- One block to Kensington Metra Station
- Sale Price: STO
- Lease Rate: STO
- Owner Occupancy
- Floor drains throughout

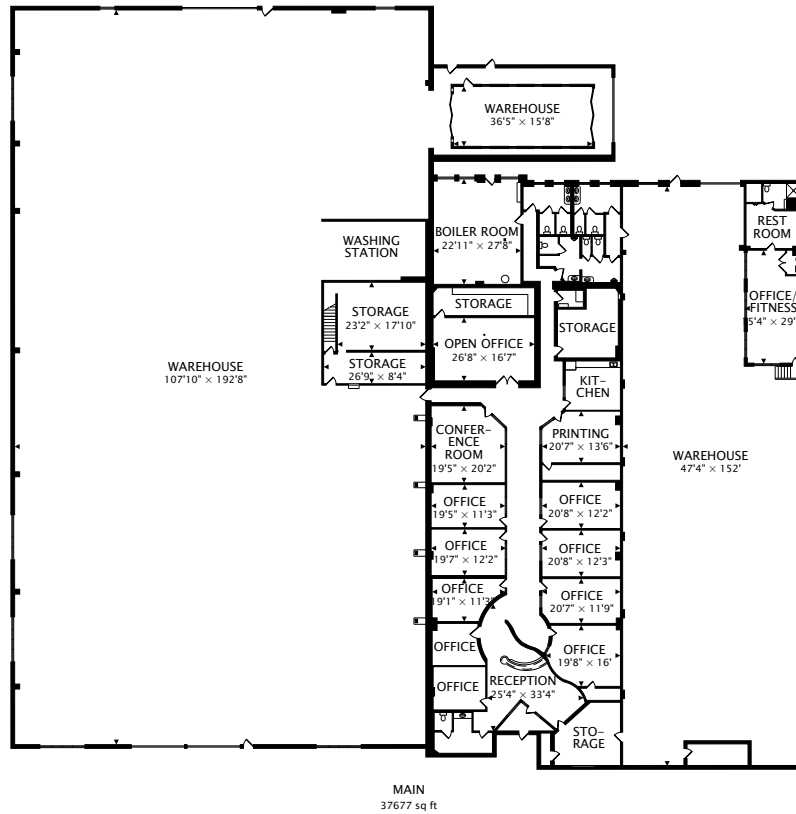


Peter Bourke

+1 847 698 8252
peter.bourke@colliers.com



Floor Plan



Site Plan

