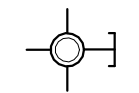
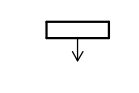




ELEC. SYMBOL LEGEND

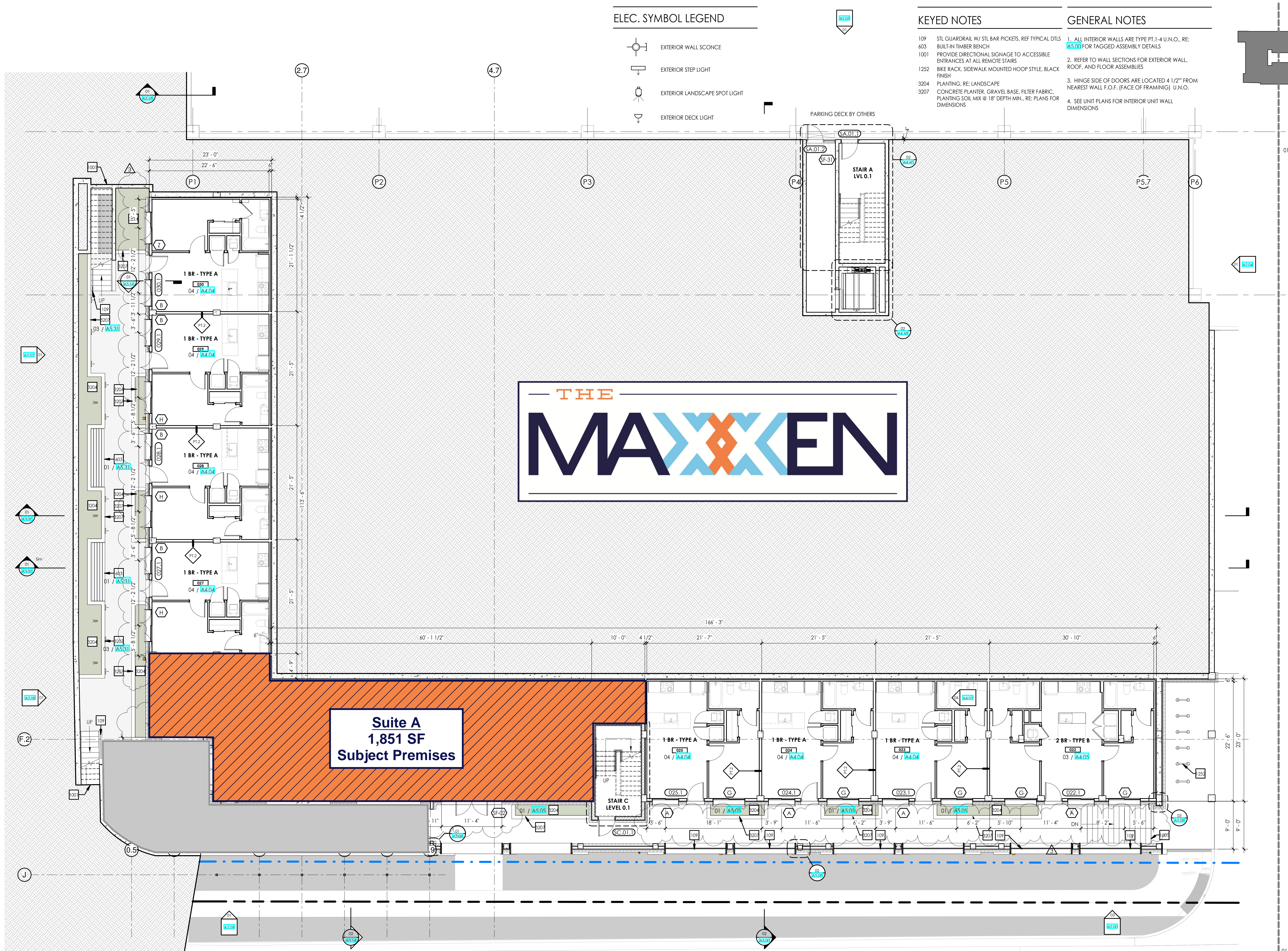
-  EXTERIOR WALL SCONCE
-  EXTERIOR STEP LIGHT
-  EXTERIOR LANDSCAPE SPOT LIGHT
-  EXTERIOR DECK LIGHT

KEYED NOTES

- 109 STL GUARDRAIL W/ STL BAR PICKETS, REF TYPICAL DTLS
- 603 BUILT-IN TIMBER BENCH
- 1001 PROVIDE DIRECTIONAL SIGNAGE TO ACCESSIBLE ENTRANCES AT ALL REMOTE STAIRS
- 1252 BIKE RACK, SIDEWALK MOUNTED HOOP STYLE, BLACK FINISH
- 3204 PLANTING, RE: LANDSCAPE
- 3207 CONCRETE PLANTER, GRAVEL BASE, FILTER FABRIC, PLANTING SOIL MIX @ 18" DEPTH MIN., RE: PLANS FOR DIMENSIONS

GENERAL NOTES

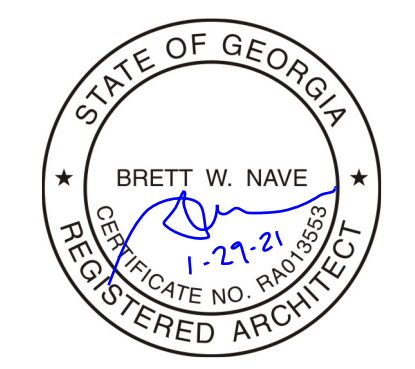
- 1. ALL INTERIOR WALLS ARE TYPE PT.1-4 U.N.O., RE: A5.01 FOR TAGGED ASSEMBLY DETAILS
- 2. REFER TO WALL SECTIONS FOR EXTERIOR WALL, ROOF, AND FLOOR ASSEMBLIES
- 3. HINGE SIDE OF DOORS ARE LOCATED 4 1/2" FROM NEAREST WALL F.O.F. (FACE OF FRAMING) U.N.O.
- 4. SEE UNIT PLANS FOR INTERIOR UNIT WALL DIMENSIONS



Suite A
1,851 SF
Subject Premises

© 2020 STUDIO.BNA, INC. | ALL WORK ASSOCIATED, INDICATED, AND IMPLIED

01 LEVEL 0.1 - FLOOR PLAN WEST
1/8" = 1'-0"
RE: 01 / A2.00



PROJECT NAME:
230 N. FINLEY

PROJECT LOCATION:
230 N. FINLEY STREET

ISSUE:
PERMIT SET

DATE:
09.15.2020

REVISION DATE:
REVISION 3 1/29/2021

DRAWING:
LEVEL 0.1 - FLOOR PLAN

SHEET NO.
A1.13

STUDIO.BNA ARCHITECTS 675 PULASKI STREET, SUITE 600, ATHENS, GEORGIA, 706.850.4224 . studio@studio.bna.com . email: studio@studio.bna.com