



PRICE REDUCED

SHORT TERM SUBLEASE

1144 15TH STREET, SUITE 3290
DENVER, CO 80202



SUITE 3290 - 2,177 SF

- **SUBLEASE THROUGH JUNE 30, 2027**
- Offers 3 private offices, 3 workstations, conference room, kitchen, copy/workroom, reception area, and floor-to-ceiling windows
- Across the hall from the floor's shared restrooms and elevator lobby

ABOUT THE PROPERTY

This 40-story, LEED Gold-certified workplace features a grand lobby, 5,000-sq-ft fitness center, tenant lounge, landscaped terraces, and 24/7 security with 858 parking spaces.

Located in the heart of LoDo's financial and cultural district, it offers premium air filtration and excellent access to major transit routes and Denver International Airport.

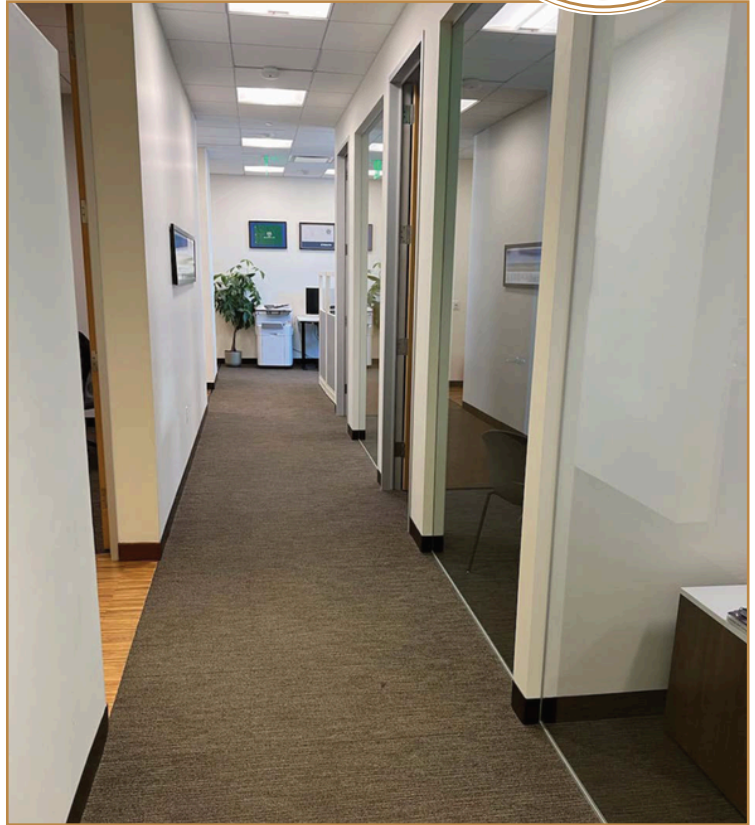
FOR MORE INFORMATION:

DAVID LEUTHOLD

C: 303.520.7729
dleuthold@stcharlestown.com
stcharlestown.com

**SUBLEASE RATE:
\$43.00/SF GROSS**

1144 15TH STREET, SUITE 3290
DENVER, CO 80202

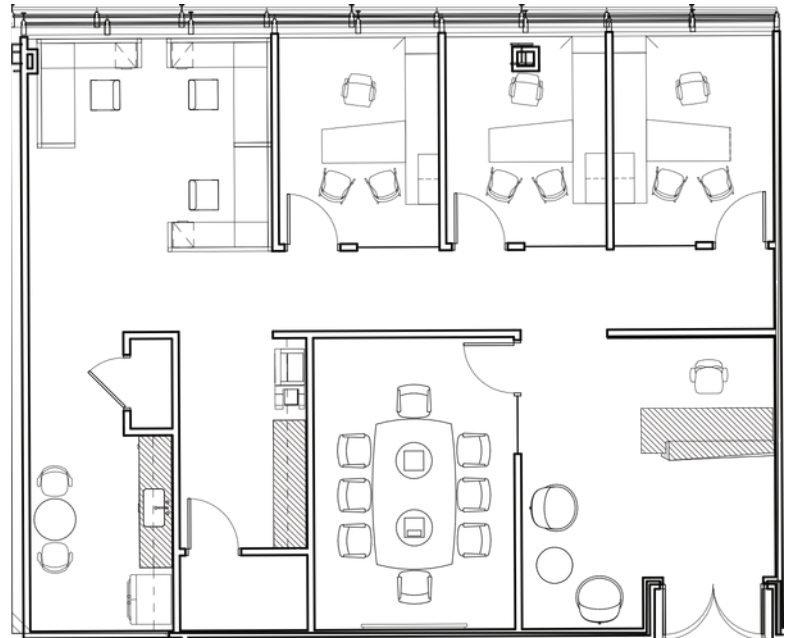


32ND FLOOR PLATE



FOR MORE INFORMATION:
DAVID LEUTHOLD
C: 303.520.7729
dleuthold@stcharlestown.com
stcharlestown.com

SUITE 3290 - 2,177 SF



* Hypothetical furniture layout

NO WARRANTY OR REPRESENTATION, EXPRESS OR IMPLIED, IS MADE AS TO THE ACCURACY OF THE INFORMATION CONTAINED HEREIN, AND THE SAME IS SUBMITTED SUBJECT TO ERRORS, OMISSIONS, CHANGE OF PRICE, RENTAL OR OTHER CONDITIONS, PRIOR SALE, LEASE OR FINANCING, OR WITHDRAWAL WITHOUT NOTICE, AND OF ANY SPECIAL LISTING CONDITIONS IMPOSED BY OUR PRINCIPALS NO WARRANTIES OR REPRESENTATIONS ARE MADE AS TO THE CONDITION OF THE PROPERTY OR ANY HAZARDS CONTAINED THEREIN ARE ANY TO BE IMPLIED.