



OFFICE FOR SUBLEASE

Thad Mallory, SIOR
t 425-362-1410
thad.mallory@nrmk.com

Josh Satterlee
t 425-362-1396
josh.satterlee@nrmk.com

Levi Bundrant
t 425-409-7405
levi.bundrant@nrmk.com

NEWMARK

Property Details

11627 Airport Road, Everett, WA

Size : 5,000 - 15,451 SF

Rate : Contact Broker

Master Lease Expires : March 31, 2029

Flexible Configurations Available



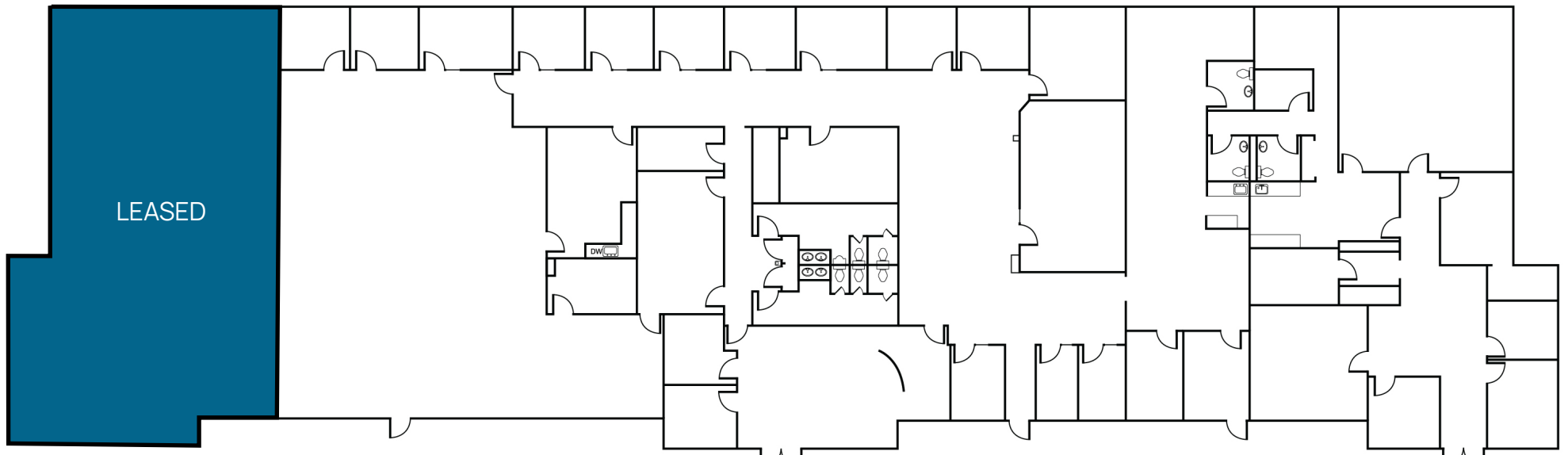
Amenities Nearby

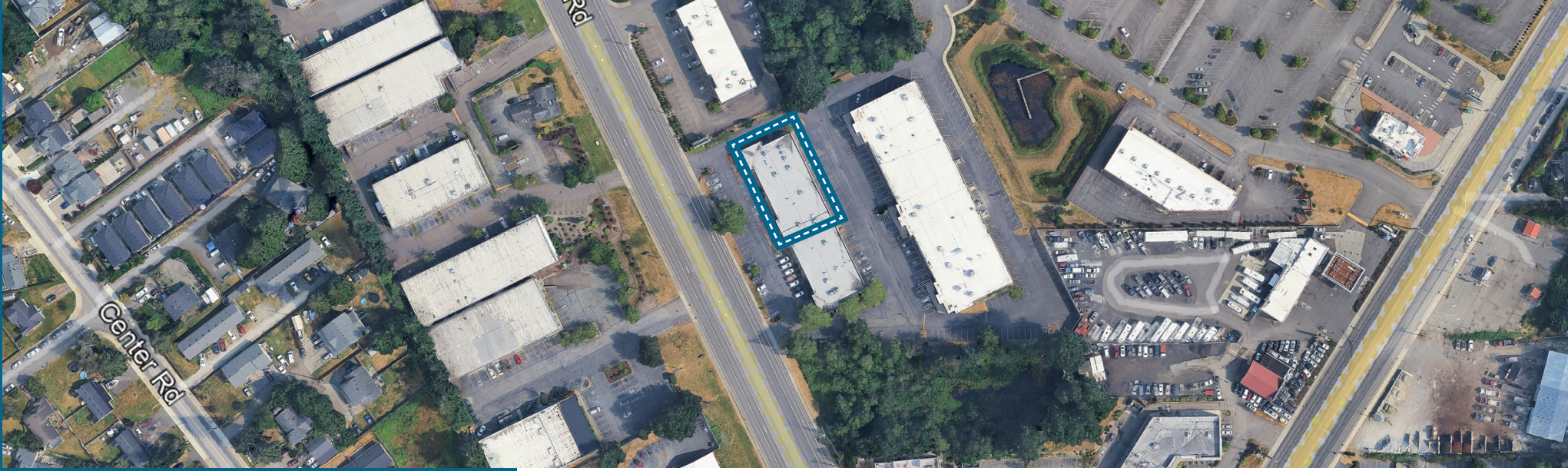


Access to SR 99 & I-5

OFFICE FOR SUBLEASE

Floor Plan





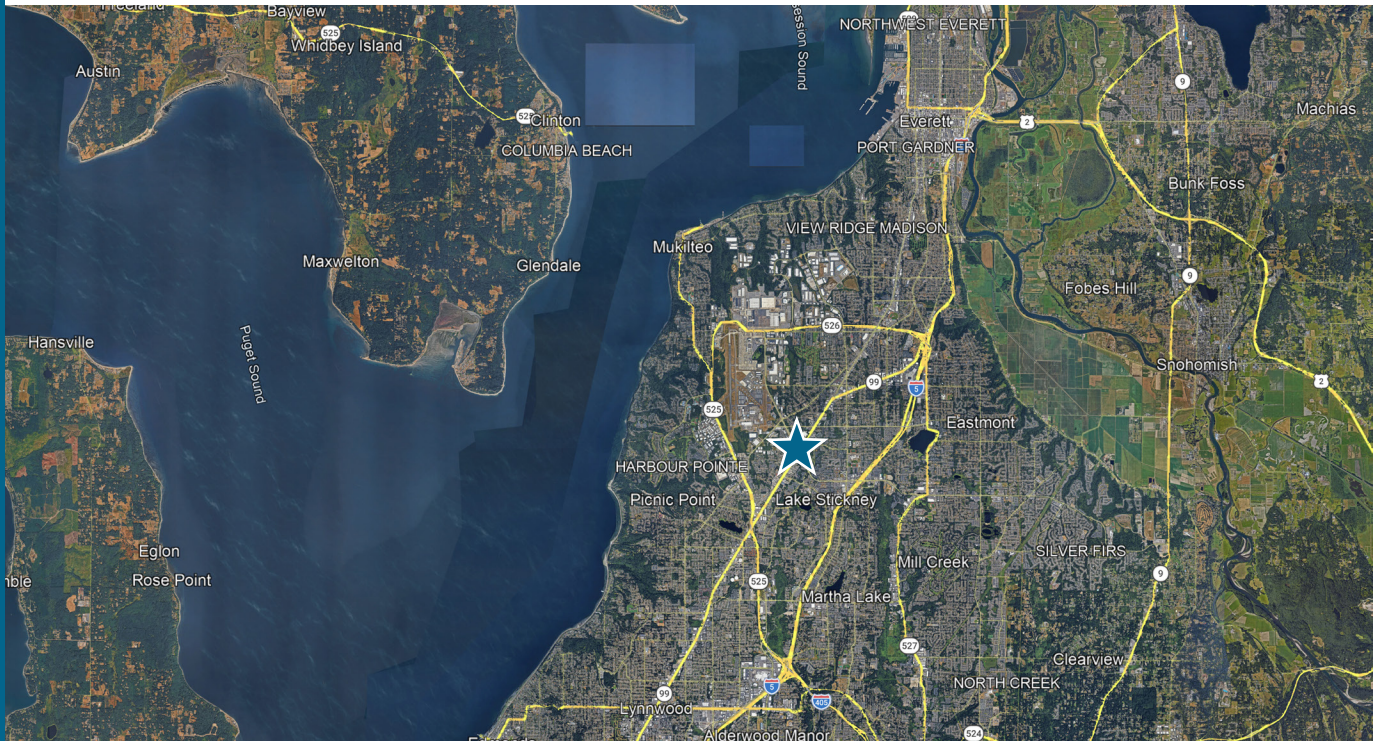
OFFICE FOR SUBLEASE

11627 Airport Road, Everett, WA

Thad Mallory, SIOR
t 425-362-1410
thad.mallory@nrmk.com

Josh Satterlee
t 425-362-1396
josh.satterlee@nrmk.com

Levi Bundrant
t 425-409-7405
levi.bundrant@nrmk.com



The distributor of this communication is performing acts for which a real estate license is required. The information contained herein has been obtained from sources deemed reliable but has not been verified and no guarantee, warranty or representation, either express or implied, is made with respect to such information. Terms of sale or lease and availability are subject to change or withdrawal without notice.

NEWMARK