

Offering Memorandum

35 Unit Former
Assisted Living

620 Harper Avenue
Peshtigo, WI 54157

FOR SALE | Table of Contents

OFFERING SUMMARY	3
PROPERTY DESCRIPTION	4
LOCATION DESCRIPTION	5
PROPERTY PHOTOS	6-15
FLOOR PLANS	16
MAPS	17-20
DEMOGRAPHICS	21

eXp Commercial, LLC, a Delaware limited liability company operates a commercial real estate business and is an affiliate (“Affiliate”) of eXp World Holdings, Inc., a Delaware corporation (together with its subsidiaries and Affiliate, “eXp”). eXp and the reported owner(s) (“Owner(s)”) of the property referenced herein (“Property”) present this Confidential Offering Memorandum (“Memorandum”) to assist the recipient(s) (“You” or “Your”) in evaluating the Property and it is intended solely for Your limited use in determining whether you desire to acquire the Property. This Memorandum contains a brief summary of selected information pertaining to the Property and should not be considered all-inclusive or permanent. The information in this Memorandum has been obtained from sources believed to be reliable, t however, eXp has not verified it and neither Owner(s) nor eXp make any guaranty, warranty or representation, express or implied, as to the accuracy or completeness of this Memorandum or the information contained herein.

It is highly recommended that You independently verify each item of information contained in this Memorandum and have the same reviewed by your tax accountant, investment advisor, and/or legal counsel. This Memorandum and any ongoing or future communications You may have with eXp and/or Owner(s) and its and their respective officers, brokers, agents, affiliates or employees regarding this Memorandum or the Property does not in any way constitute or convey any guaranty, warranty or representation, express or implied, or legal, investment or tax advice to You. All assumptions, projections, estimates and/or opinions expressed or implied in this Memorandum are provided as examples only and all information is subject to change, error, omissions and/or withdrawal without notice. Any references in the Memorandum to boundary, area, height, acreage, building or premises size or square footage are approximations only and should be independently verified by You. Any references in the Memorandum to any lease or tenant information, including and without limitation to the premises, rental rates, rent escalations, common area expenses, percentage rents and lease maturities should be independently verified by You. You should conduct your own investigations and due diligence of the Property, including without limitation to environmental and physical condition inspections and reach your own conclusions regarding the suitability of the Property for investment.

eXp and Owner(s) assume no responsibility for the accuracy or completeness of any information contained in this Memorandum. eXp and Owner(s) expressly disclaim any implied or expressed warranties of merchantability, fitness for a particular purpose or non-infringement of intellectual property relating to this Memorandum. In no event shall eXp or Owner(s), and its and their respective officers, brokers, agents, affiliates or employees, be liable for any damages resulting from the reliance on or use of any information in this Memorandum, including but not limited to direct, special, indirect, consequential or incidental damages.

By accepting receipt of this Memorandum, You agree to the following: (a) This Memorandum is of a highly confidential nature; it will be held in the strictest confidence and shall be returned to eXp upon request; (b) You will not contact any property manager, contractor, employee or tenant of the Property regarding the Property or this Memorandum, without prior approval of eXp or Owner(s); and (c) You understand and agree that Affiliate represents Owner(s) and not You and (iv) this Memorandum and the information contained herein shall not be used by You in any way that is detrimental to Owner(s), or eXp. Neither eXp nor Owner(s) shall have any obligation to pay any commission, finder’s fee, or any other compensation to any Broker, Agent or other person. You may provide information to persons retained by You to evaluate the Property only after first obtaining a signed Confidentiality Agreement from such persons and providing a copy of such agreement to eXp via email at legal@exprealty.net.

The Owner(s) shall have no legal commitment or obligation to You or any person(s) or entity reviewing this Memorandum or making an offer to purchase, lease, or finance the Property unless and until written agreement(s) for the purchase or finance of the Property are considered satisfactory to Owner(s) in its sole and absolute discretion and have been fully executed, delivered, and approved by the Owner(s) and any conditions to the Owner’s obligations therein have been fully satisfied or waived.

The Owner(s) expressly reserves the right, at its sole and absolute discretion, to reject any or all expressions of interest or offers to purchase or lease the Property, and/or to terminate discussion with You or any other person or entity at any time with or without notice, which may or may not arise as a result of review of the Memorandum.

For Sale
 35 Unit Former Assisted Living
 Offering Summary



OFFERING SUMMARY

Property Address:	620 Harper Avenue, Peshtigo, WI
Building Size:	23,000 SF
Number of Units:	35
Lot Size:	2.94 Acres
Originally Built:	1950s
Building Addition Built:	1980s
Newest Common Area Built:	2016
Parcel Number:	271-01006.000
2025 Property Tax:	\$11,626.42
Zoning:	R1 - Residential
Submarket:	Peshtigo
Market:	Marinette & Brown Counties
Water Source:	City Water & Sewer

Dawn Davis
 +1 920 309 1295
 dawn@3drealtygroup.com

www.3DRealtyGroup.com

eXp Commercial, LLC, its direct and indirect parents and their subsidiaries (together, "We") obtained the information above from sources believed to be reliable, however, We have not verified its accuracy and make no guarantee, warranty or representation, expressed or implied, about such information. The information contained above is submitted subject to the possibility of errors, omissions, price changes, rental or other conditions, prior sale, lease or financing, or withdrawal without notice. Any projections, opinions, assumptions or estimates of the information contained above or provided in connection therewith, either expressed or implied, are for example only, and they may not represent current or future performance of the subject property. You, together with your tax and legal advisors, should conduct your own thorough investigation of the subject property and potential investment.

For Sale

35 Unit Former Assisted Living

Property Description



PROPERTY DESCRIPTION

Situated on a 2.94-acre corner parcel, the property at 620 Harper Avenue in Peshtigo, Wisconsin presents a rare opportunity to acquire a fully equipped former assisted living facility ready for repositioning or reopening. Originally constructed in the 1950s, the building has been thoughtfully expanded over time with major additions in the 1980s and most recently in 2016, when an attractive common area featuring a fireplace, pool table, and spacious dining room was added to enhance resident gathering spaces. The facility offers 35 residential units, including 10 units with newly tiled private full bathrooms, while the remaining units include in-room sinks. Many units were designed to support double occupancy. Wide hallways, a newer nurse's station located in the addition, and a fully sprinklered building provide functionality and safety consistent with senior housing operations.

The property is well-appointed with operational infrastructure including a large commercial kitchen with stainless steel equipment and walk-in coolers, two dining rooms, two laundry rooms, and a two-chair beauty salon. Recent capital improvements include a newer boiler, a renovated laundry room, and a roof that is less than 10 years old according to the seller (with the exception of the flat roof over the laundry area). The building is being offered fully furnished with the furniture, fixtures, and equipment necessary to operate the facility, along with a 2013 eight-passenger van included in the sale. Outdoor amenities include a front entrance overhang, a pergola, and a backyard bordered by a wooded lot line, creating a peaceful atmosphere.



Dawn Davis

+1 920 309 1295

dawn@3drealtygroup.com

www.3DRealtyGroup.com

eXp Commercial, LLC, its direct and indirect parents and their subsidiaries (together, "We") obtained the information above from sources believed to be reliable, however, We have not verified its accuracy and make no guarantee, warranty or representation, expressed or implied, about such information. The information contained above is submitted subject to the possibility of errors, omissions, price changes, rental or other conditions, prior sale, lease or financing, or withdrawal without notice. Any projections, opinions, assumptions or estimates of the information contained above or provided in connection therewith, either expressed or implied, are for example only, and they may not represent current or future performance of the subject property. You, together with your tax and legal advisors, should conduct your own thorough investigation of the subject property and potential investment.

For Sale

35 Unit Former Assisted Living

Location Description



LOCATION DESCRIPTION

This property offers a strategic location in Peshtigo, Wisconsin, a historic and close-knit community of about 3,400 residents in northeastern Marinette County. It's approximately 45 miles northeast of Green Bay, 15 miles northeast of Oconto, and just 7 miles southwest of Marinette.

The property benefits from excellent regional access just off U.S. Highway 41, a principal north-south corridor that links the area with Marinette to the east and broader Northeast Wisconsin markets to the north, south, and west. Major regional connections like Wisconsin Highway 64 also serve the county, enhancing mobility to neighboring communities.

Healthcare services are readily accessible, with acute care available at Aurora Medical Center - Bay Area in nearby Marinette and additional facilities such as Bellin Health Oconto Hospital and Oconto Memorial Hospital within easy driving distance. This central location supports both local residents and a broader service area while offering connectivity for future use.



Dawn Davis

+1 920 309 1295

dawn@3drealtygroup.com

www.3DRealtyGroup.com

eXp Commercial, LLC, its direct and indirect parents and their subsidiaries (together, "We") obtained the information above from sources believed to be reliable, however, We have not verified its accuracy and make no guarantee, warranty or representation, expressed or implied, about such information. The information contained above is submitted subject to the possibility of errors, omissions, price changes, rental or other conditions, prior sale, lease or financing, or withdrawal without notice. Any projections, opinions, assumptions or estimates of the information contained above or provided in connection therewith, either expressed or implied, are for example only, and they may not represent current or future performance of the subject property. You, together with your tax and legal advisors, should conduct your own thorough investigation of the subject property and potential investment.

For Sale
35 Unit Former Assisted Living
Interior Photos - Common Area Space



Front Entrance

Administrative Office

Dawn Davis
+1 920 309 1295
dawn@3drealtygroup.com

www.3DRealtyGroup.com

For Sale
35 Unit Former Assisted Living
Interior Photos - Dining Area



Dawn Davis
+1 920 309 1295
dawn@3drealtygroup.com

www.3DRealtyGroup.com

eXp Commercial, LLC, its direct and indirect parents and their subsidiaries (together, "We") obtained the information above from sources believed to be reliable, however, We have not verified its accuracy and make no guarantee, warranty or representation, expressed or implied, about such information. The information contained above is submitted subject to the possibility of errors, omissions, price changes, rental or other conditions, prior sale, lease or financing, or withdrawal without notice. Any projections, opinions, assumptions or estimates of the information contained above or provided in connection therewith, either expressed or implied, are for example only, and they may not represent current or future performance of the subject property. You, together with your tax and legal advisors, should conduct your own thorough investigation of the subject property and potential investment.

For Sale

35 Unit Former Assisted Living

Interior Photos - Double Occupancy Units



Dawn Davis
+1 920 309 1295
dawn@3drealtygroup.com

www.3DRealtyGroup.com

eXp Commercial, LLC, its direct and indirect parents and their subsidiaries (together, "We") obtained the information above from sources believed to be reliable, however, We have not verified its accuracy and make no guarantee, warranty or representation, expressed or implied, about such information. The information contained above is submitted subject to the possibility of errors, omissions, price changes, rental or other conditions, prior sale, lease or financing, or withdrawal without notice. Any projections, opinions, assumptions or estimates of the information contained above or provided in connection therewith, either expressed or implied, are for example only, and they may not represent current or future performance of the subject property. You, together with your tax and legal advisors, should conduct your own thorough investigation of the subject property and potential investment.

For Sale
35 Unit Former Assisted Living
Interior Photos - Large Private Bathroom



Dawn Davis
+1 920 309 1295
dawn@3drealtygroup.com

www.3DRealtyGroup.com

eXp Commercial, LLC, its direct and indirect parents and their subsidiaries (together, "We") obtained the information above from sources believed to be reliable, however, We have not verified its accuracy and make no guarantee, warranty or representation, expressed or implied, about such information. Information contained above is submitted subject to the possibility of errors, omissions, price changes, rental or other conditions, prior sale, lease or financing, or withdrawal without notice. Any projections, opinions, assumptions or estimates of the information contained above or provided in connection therewith, either expressed or implied, are for example only, and they may not represent current or future performance of the subject property. You, together with your tax and legal advisors, should conduct your own thorough investigation of the subject property and potential investment.

For Sale

35 Unit Former Assisted Living



Interior Photos - 2nd Dining Room & Beauty Salon



Dawn Davis

+1 920 309 1295

dawn@3drealtygroup.com

www.3DRealtyGroup.com

eXp Commercial, LLC, its direct and indirect parents and their subsidiaries (together, "We") obtained the information above from sources believed to be reliable, however, We have not verified its accuracy and make no guarantee, warranty or representation, expressed or implied, about such information. The information contained above is submitted subject to the possibility of errors, omissions, price changes, rental or other conditions, prior sale, lease or financing, or withdrawal without notice. Any projections, opinions, assumptions or estimates of the information contained above or provided in connection therewith, either expressed or implied, are for example only, and they may not represent current or future performance of the subject property. You, together with your tax and legal advisors, should conduct your own thorough investigation of the subject property and potential investment.

For Sale

35 Unit Former Assisted Living Interior Photos - Single Occupancy Unit & Common Area Bathroom



Dawn Davis
+1 920 309 1295
dawn@3drealtygroup.com

www.3DRealtyGroup.com

eXp Commercial, LLC, its direct and indirect parents and their subsidiaries (together, "We") obtained the information above from sources believed to be reliable, however, We have not verified its accuracy and make no guarantee, warranty or representation, expressed or implied, about such information. The information contained above is submitted subject to the possibility of errors, omissions, price changes, rental or other conditions, prior sale, lease or financing, or withdrawal without notice. Any projections, opinions, assumptions or estimates of the information contained above or provided in connection therewith, either expressed or implied, are for example only, and they may not represent current or future performance of the subject property. You, together with your tax and legal advisors, should conduct your own thorough investigation of the subject property and potential investment.

For Sale
35 Unit Former Assisted Living
Interior Photos - Common Area Rooms



Dawn Davis
+1 920 309 1295
dawn@3drealtygroup.com

www.3DRealtyGroup.com

eXp Commercial, LLC, its direct and indirect parents and their subsidiaries (together, "We") obtained the information above from sources believed to be reliable, however, We have not verified its accuracy and make no guarantee, warranty or representation, expressed or implied, about such information. Information contained above is submitted subject to the possibility of errors, omissions, price changes, rental or other conditions, prior sale, lease or financing, or withdrawal without notice. Any projections, opinions, assumptions or estimates of the information contained above or provided in connection therewith, either expressed or implied, are for example only, and they may not represent current or future performance of the subject property. You, together with your tax and legal advisors, should conduct your own thorough investigation of the subject property and potential investment.

For Sale
35 Unit Former Assisted Living
Interior Photos - Bathroom



Dawn Davis
+1 920 309 1295
dawn@3drealtygroup.com

www.3DRealtyGroup.com

eXp Commercial, LLC, its direct and indirect parents and their subsidiaries (together, "We") obtained the information above from sources believed to be reliable, however, We have not verified its accuracy and make no guarantee, warranty or representation, expressed or implied, about such information. The information contained above is submitted subject to the possibility of errors, omissions, price changes, rental or other conditions, prior sale, lease or financing, or withdrawal without notice. Any projections, opinions, assumptions or estimates of the information contained above or provided in connection therewith, either expressed or implied, are for example only, and they may not represent current or future performance of the subject property. You, together with your tax and legal advisors, should conduct your own thorough investigation of the subject property and potential investment.

For Sale
35 Unit Former Assisted Living
Interior Photos - Commercial Kitchen



Dawn Davis
+1 920 309 1295
dawn@3drealtygroup.com

www.3DRealtyGroup.com

eXp Commercial, LLC, its direct and indirect parents and their subsidiaries (together, "We") obtained the information above from sources believed to be reliable, however, We have not verified its accuracy and make no guarantee, warranty or representation, expressed or implied, about such information. The information contained above is submitted subject to the possibility of errors, omissions, price changes, rental or other conditions, prior sale, lease or financing, or withdrawal without notice. Any projections, opinions, assumptions or estimates of the information contained above or provided in connection therewith, either expressed or implied, are for example only, and they may not represent current or future performance of the subject property. You, together with your tax and legal advisors, should conduct your own thorough investigation of the subject property and potential investment.

For Sale
35 Unit Former Assisted Living
Exterior Photos - Backyard & Pergola



Dawn Davis
+1 920 309 1295
dawn@3drealtygroup.com

www.3DRealtyGroup.com

eXp Commercial, LLC, its direct and indirect parents and their subsidiaries (together, "We") obtained the information above from sources believed to be reliable, however, We have not verified its accuracy and make no guarantee, warranty or representation, expressed or implied, about such information. The information contained above is submitted subject to the possibility of errors, omissions, price changes, rental or other conditions, prior sale, lease or financing, or withdrawal without notice. Any projections, opinions, assumptions or estimates of the information contained above or provided in connection therewith, either expressed or implied, are for example only, and they may not represent current or future performance of the subject property. You, together with your tax and legal advisors, should conduct your own thorough investigation of the subject property and potential investment.

For Sale

35 Unit Former Assisted Living

Exterior Photos - Passenger Van & Backyard



Dawn Davis

+1 920 309 1295

dawn@3drealtygroup.com

www.3DRealtyGroup.com

eXp Commercial, LLC, its direct and indirect parents and their subsidiaries (together, "We") obtained the information above from sources believed to be reliable, however, We have not verified its accuracy and make no guarantee, warranty or representation, expressed or implied, about such information. The information contained above is submitted subject to the possibility of errors, omissions, price changes, rental or other conditions, prior sale, lease or financing, or withdrawal without notice. Any projections, opinions, assumptions or estimates of the information contained above or provided in connection therewith, either expressed or implied, are for example only, and they may not represent current or future performance of the subject property. You, together with your tax and legal advisors, should conduct your own thorough investigation of the subject property and potential investment.

For Sale
35 Unit Former Assisted Living
Exterior Photos - Land

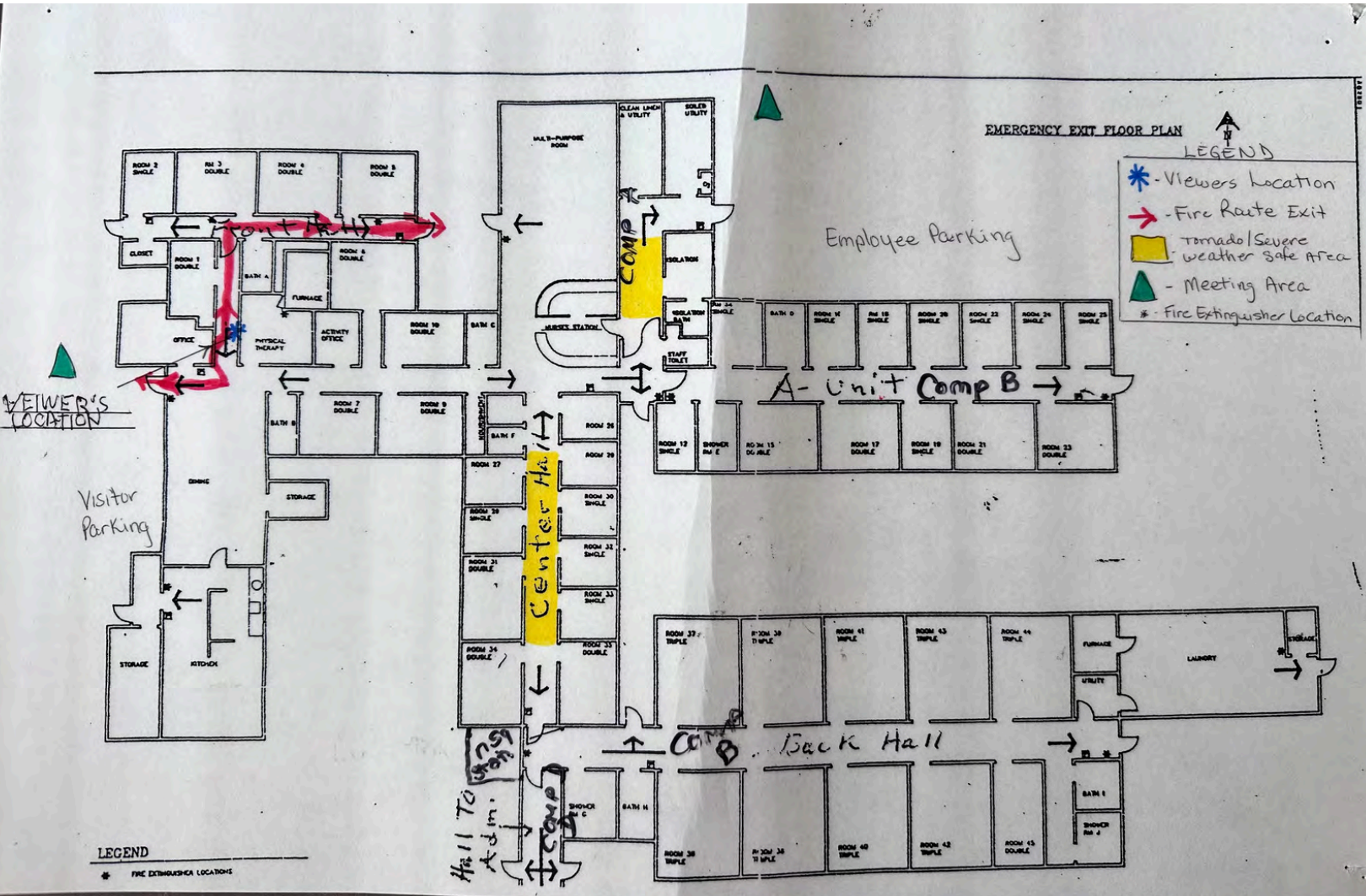


Dawn Davis
+1 920 309 1295
dawn@3drealtygroup.com

www.3DRealtyGroup.com

eXp Commercial, LLC, its direct and indirect parents and their subsidiaries (together, "We") obtained the information above from sources believed to be reliable, however, We have not verified its accuracy and make no guarantee, warranty or representation, expressed or implied, about such information. The information contained above is submitted subject to the possibility of errors, omissions, price changes, rental or other conditions, prior sale, lease or financing, or withdrawal without notice. Any projections, opinions, assumptions or estimates of the information contained above or provided in connection therewith, either expressed or implied, are for example only, and they may not represent current or future performance of the subject property. You, together with your tax and legal advisors, should conduct your own thorough investigation of the subject property and potential investment.

For Sale
 35 Unit Former Assisted Living
 Floor Plan



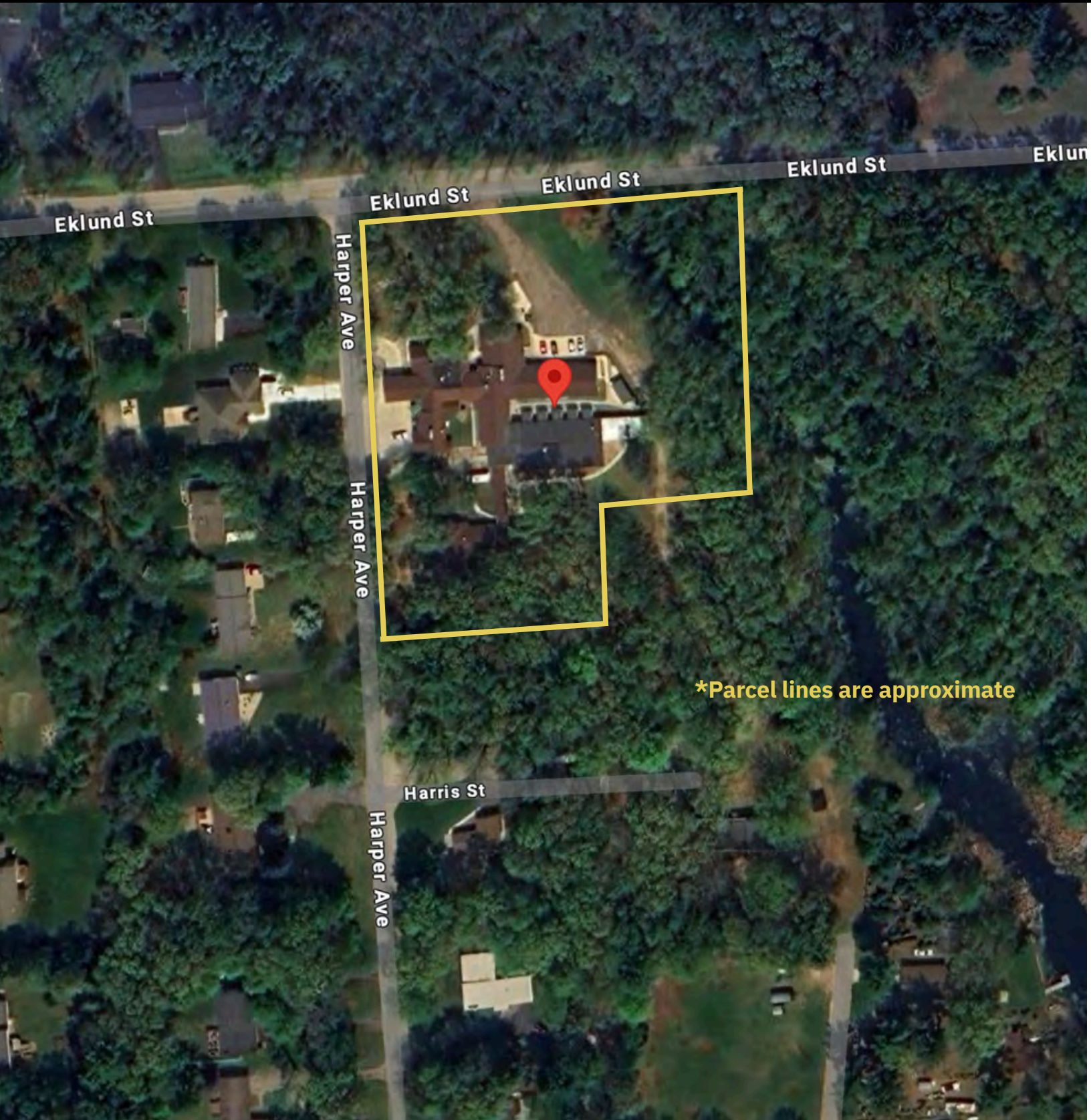
Dawn Davis
 +1 920 309 1295
 dawn@3drealtygroup.com

www.3DRealtyGroup.com

eXp Commercial, LLC, its direct and indirect parents and their subsidiaries (together, "We") obtained the information above from sources believed to be reliable, however, We have not verified its accuracy and make no guarantee, warranty or representation, expressed or implied, about such information. The information contained above is submitted subject to the possibility of errors, omissions, price changes, rental or other conditions, prior sale, lease or financing, or withdrawal without notice. Any projections, opinions, assumptions or estimates of the information contained above or provided in connection therewith, either expressed or implied, are for example only, and they may not represent current or future performance of the subject property. You, together with your tax and legal advisors, should conduct your own thorough investigation of the subject property and potential investment.

For Sale
35 Unit Former Assisted Living

Aerial View



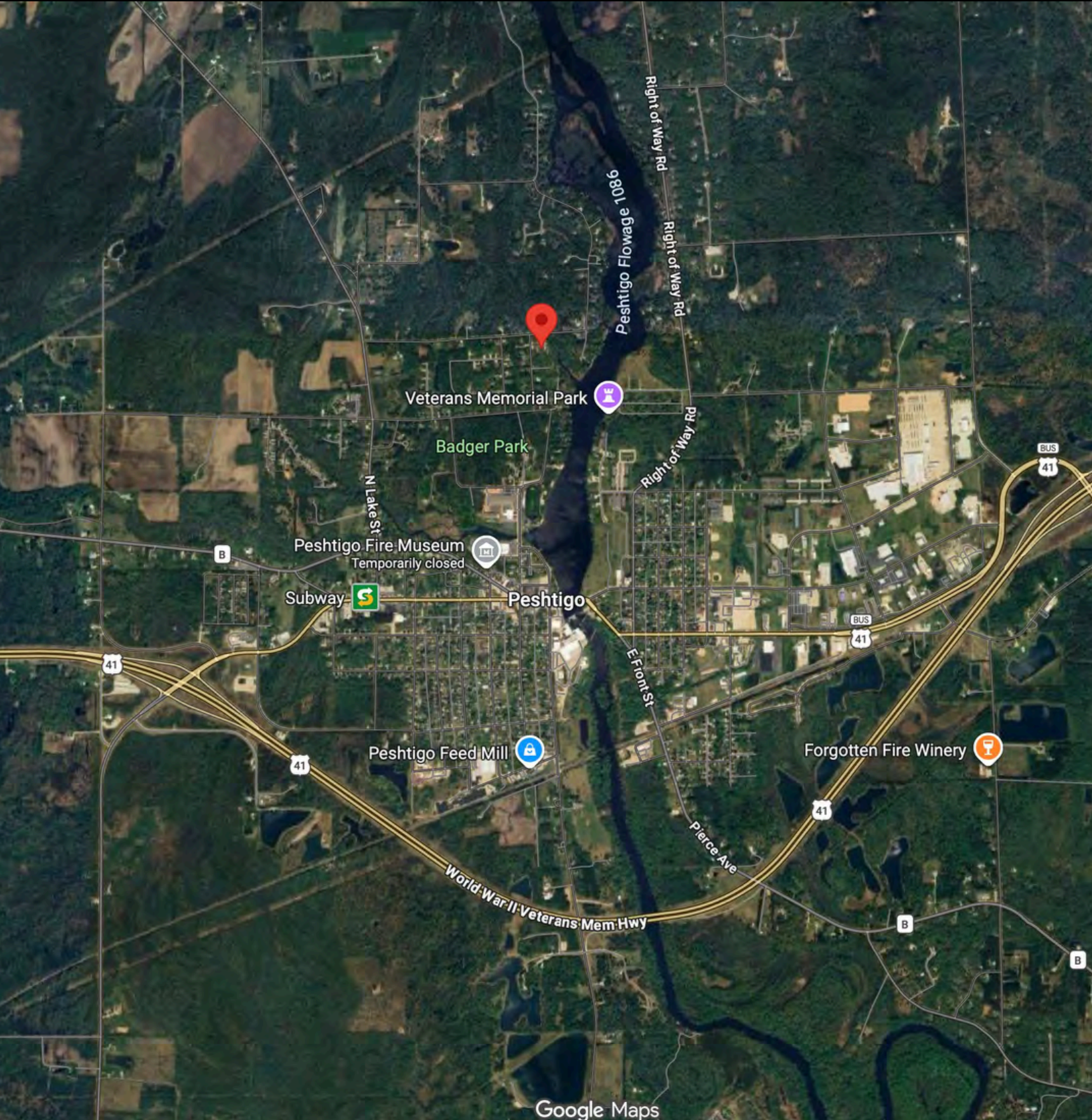
*Parcel lines are approximate

Dawn Davis
+1 920 309 1295
dawn@3drealtygroup.com

www.3DRealtyGroup.com

eXp Commercial, LLC, its direct and indirect parents and their subsidiaries (together, "We") obtained the information above from sources believed to be reliable, however, We have not verified its accuracy and make no guarantee, warranty or representation, expressed or implied, about such information. The information contained above is submitted subject to the possibility of errors, omissions, price changes, rental or other conditions, prior sale, lease or financing, or withdrawal without notice. Any projections, opinions, assumptions or estimates of the information contained above or provided in connection therewith, either expressed or implied, are for example only, and they may not represent current or future performance of the subject property. You, together with your tax and legal advisors, should conduct your own thorough investigation of the subject property and potential investment.

For Sale
35 Unit Former Assisted Living
Local Map



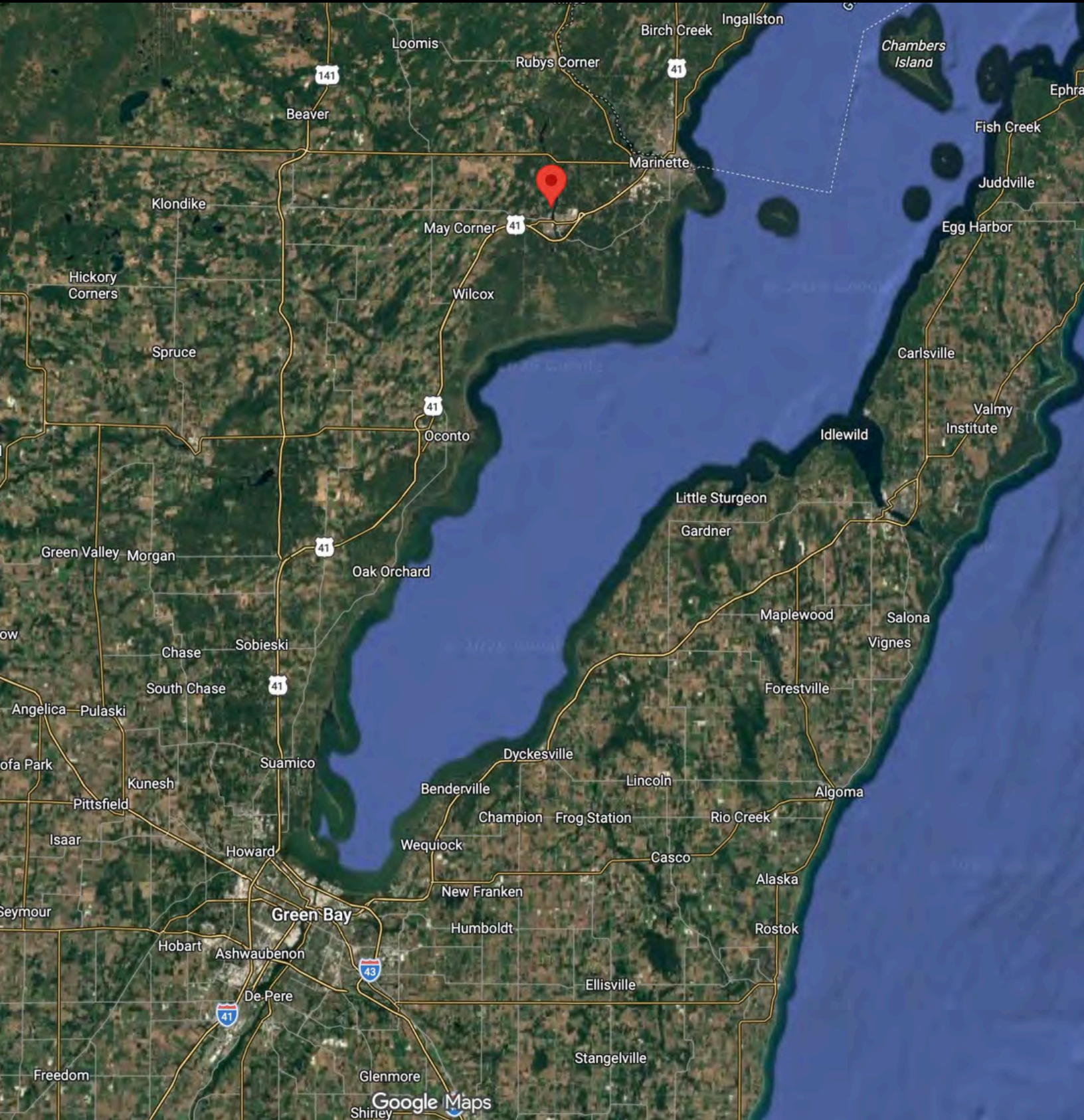
Google Maps

Dawn Davis
+1 920 309 1295
dawn@3drealtygroup.com

www.3DRealtyGroup.com

eXp Commercial, LLC, its direct and indirect parents and their subsidiaries (together, "We") obtained the information above from sources believed to be reliable, however, We have not verified its accuracy and make no guarantee, warranty or representation, expressed or implied, about such information. The information contained above is submitted subject to the possibility of errors, omissions, price changes, rental or other conditions, prior sale, lease or financing, or withdrawal without notice. Any projections, opinions, assumptions or estimates of the information contained above or provided in connection therewith, either expressed or implied, are for example only, and they may not represent current or future performance of the subject property. You, together with your tax and legal advisors, should conduct your own thorough investigation of the subject property and potential investment.

For Sale
35 Unit Former Assisted Living
Regional Map



Dawn Davis
+1 920 309 1295
dawn@3drealtygroup.com

www.3DRealtyGroup.com

eXp Commercial, LLC, its direct and indirect parents and their subsidiaries (together, "We") obtained the information above from sources believed to be reliable, however, We have not verified its accuracy and make no guarantee, warranty or representation, expressed or implied, about such information. The information contained above is submitted subject to the possibility of errors, omissions, price changes, rental or other conditions, prior sale, lease or financing, or withdrawal without notice. Any projections, opinions, assumptions or estimates of the information contained above or provided in connection therewith, either expressed or implied, are for example only, and they may not represent current or future performance of the subject property. You, together with your tax and legal advisors, should conduct your own thorough investigation of the subject property and potential investment.

For Sale
35 Unit Former Assisted Living
Retailer Map



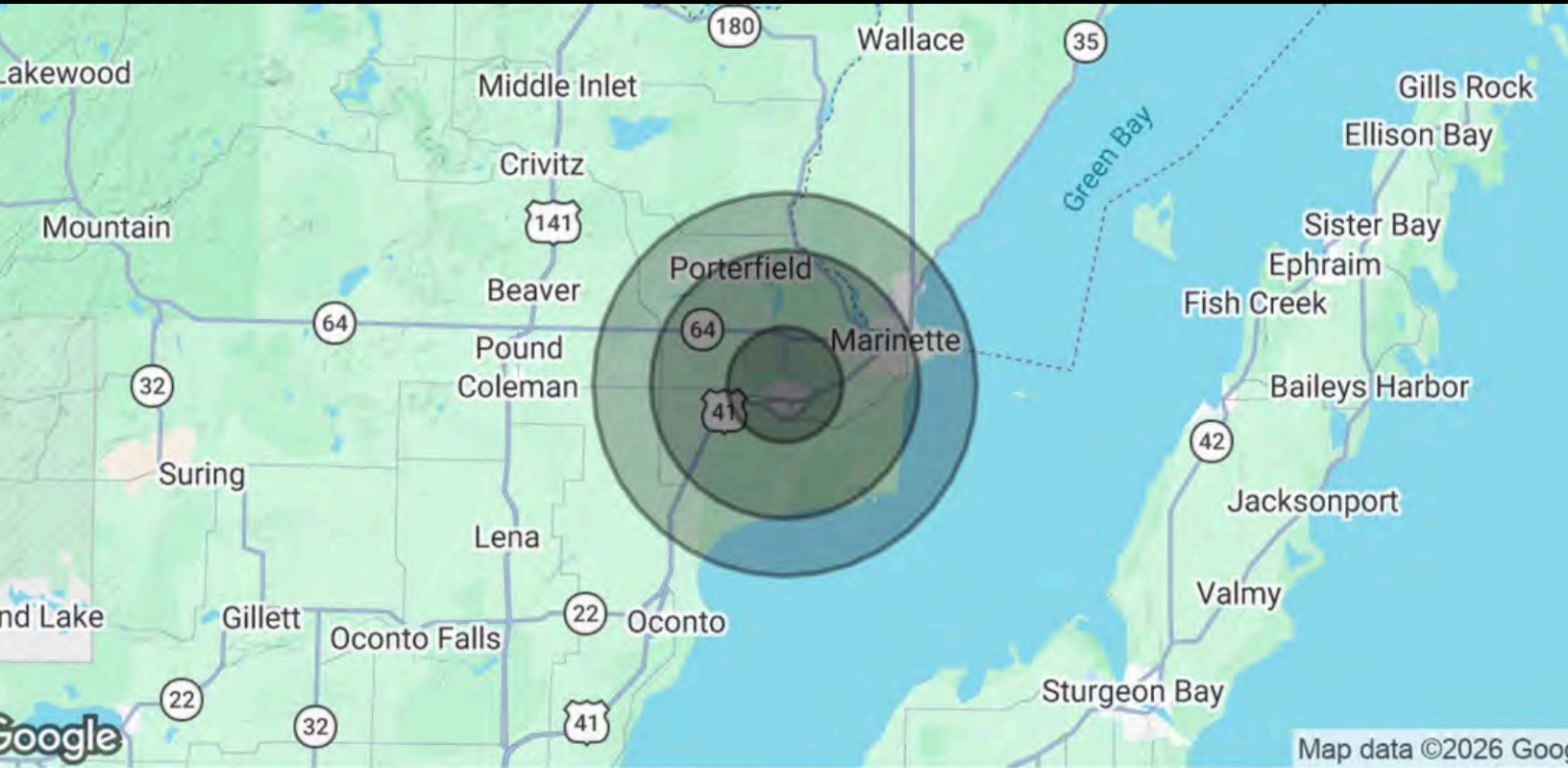
Peshtigo is located 7 miles from Marinette

Dawn Davis
+1 920 309 1295
dawn@3drealtygroup.com

www.3DRealtyGroup.com

eXp Commercial, LLC, its direct and indirect parents and their subsidiaries (together, "We") obtained the information above from sources believed to be reliable, however, We have not verified its accuracy and make no guarantee, warranty or representation, expressed or implied, about such information. Information contained above is submitted subject to the possibility of errors, omissions, price changes, rental or other conditions, prior sale, lease or financing, or withdrawal without notice. Any projections, opinions, assumptions or estimates of the information contained above or provided in connection therewith, either expressed or implied, are for example only, and they may not represent current or future performance of the subject property. You, together with your tax and legal advisors, should conduct your own thorough investigation of the subject property and potential investment.

For Sale
35 Unit Former Assisted Living
Demographics Map & Report



POPULATION	3 MILES	7 MILES	10 MILES
Total Population	4,989	21,554	31,405
Average Age	43.7	45.8	46.4
Average Age (Male)	36.4	44.0	45.1
Average Age (Female)	47.5	46.4	47.3
HOUSEHOLDS & INCOME	3 MILES	7 MILES	10 MILES
Total Households	2,150	9,618	14,068
# of Persons per HH	2.3	2.2	2.2
Average HH Income	\$86,697	\$83,916	\$79,395
Average House Value	\$185,178	\$165,696	\$164,366

2023 American Community Survey (ACS)

Dawn Davis
+1 920 309 1295
dawn@3drealtygroup.com

www.3DRealtyGroup.com

eXp Commercial, LLC, its direct and indirect parents and their subsidiaries (together, "We") obtained the information above from sources believed to be reliable, however, We have not verified its accuracy and make no guarantee, warranty or representation, expressed or implied, about such information. The information contained above is submitted subject to the possibility of errors, omissions, price changes, rental or other conditions, prior sale, lease or financing, or withdrawal without notice. Any projections, opinions, assumptions or estimates of the information contained above or provided in connection therewith, either expressed or implied, are for example only, and they may not represent current or future performance of the subject property. You, together with your tax and legal advisors, should conduct your own thorough investigation of the subject property and potential investment.

DISCLOSURE TO NON-RESIDENTIAL CUSTOMERS

1 Prior to negotiating on your behalf the brokerage firm, or an agent associated with the firm, must provide you the
2 following disclosure statement:

3 **DISCLOSURE TO CUSTOMERS** You are a customer of the brokerage firm (hereinafter Firm). The Firm is either an agent
4 of another party in the transaction or a subagent of another firm that is the agent of another party in the transaction. A
5 broker or a salesperson acting on behalf of the Firm may provide brokerage services to you. Whenever the Firm is
6 providing brokerage services to you, the Firm and its brokers and salespersons (hereinafter Agents) owe you, the
7 customer, the following duties:

- 8 (a) The duty to provide brokerage services to you fairly and honestly.
- 9 (b) The duty to exercise reasonable skill and care in providing brokerage services to you.
- 10 (c) The duty to provide you with accurate information about market conditions within a reasonable time if you request
11 it, unless disclosure of the information is prohibited by law.
- 12 (d) The duty to disclose to you in writing certain Material Adverse Facts about a property, unless disclosure of the
13 information is prohibited by law (see lines 42-51).
- 14 (e) The duty to protect your confidentiality. Unless the law requires it, the Firm and its Agents will not disclose your
15 confidential information or the confidential information of other parties (see lines 23-41).
- 16 (f) The duty to safeguard trust funds and other property held by the Firm or its Agents.
- 17 (g) The duty, when negotiating, to present contract proposals in an objective and unbiased manner and disclose the
18 advantages and disadvantages of the proposals.

19 Please review this information carefully. An Agent of the Firm can answer your questions about brokerage services,
20 but if you need legal advice, tax advice, or a professional home inspection, contact an attorney, tax advisor, or home
21 inspector. This disclosure is required by section 452.135 of the Wisconsin statutes and is for information only. It is a
22 plain-language summary of the duties owed to a customer under section 452.133(1) of the Wisconsin statutes.

23 **CONFIDENTIALITY NOTICE TO CUSTOMERS** The Firm and its Agents will keep confidential any information given to the
24 Firm or its Agents in confidence, or any information obtained by the Firm and its Agents that a reasonable person
25 would want to be kept confidential, unless the information must be disclosed by law or you authorize the Firm to
26 disclose particular information. The Firm and its Agents shall continue to keep the information confidential after the
27 Firm is no longer providing brokerage services to you.

28 The following information is required to be disclosed by law:
29 1. Material Adverse Facts, as defined in Wis. Stat. § 452.01(5g) (see lines 42-51).
30 2. Any facts known by the Firm or its Agents that contradict any information included in a written inspection
31 report on the property or real estate that is the subject of the transaction.
32 To ensure that the Firm and its Agents are aware of what specific information you consider confidential, you may
33 list that information below (see lines 35-41) or provide that information to the Firm or its Agents by other means. At a
34 later time, you may also provide the Firm or its Agents with other information you consider to be confidential.

35 **CONFIDENTIAL INFORMATION:** _____
36 _____
37 _____

38 **NON-CONFIDENTIAL INFORMATION** (the following information may be disclosed by the Firm and its Agents): _____
39 _____
40 _____
41 _____ (Insert information you authorize to be disclosed, such as financial qualification information.)

42 **DEFINITION OF MATERIAL ADVERSE FACTS**
43 A "Material Adverse Fact" is defined in Wis. Stat. § 452.01(5g) as an Adverse Fact that a party indicates is of such
44 significance, or that is generally recognized by a competent licensee as being of such significance to a reasonable
45 party, that it affects or would affect the party's decision to enter into a contract or agreement concerning a transaction
46 or affects or would affect the party's decision about the terms of such a contract or agreement.

47 An "Adverse Fact" is defined in Wis. Stat. § 452.01(1e) as a condition or occurrence that a competent licensee
48 generally recognizes will significantly and adversely affect the value of the property, significantly reduce the structural
49 integrity of improvements to real estate, or present a significant health risk to occupants of the property; or information
50 that indicates that a party to a transaction is not able to or does not intend to meet his or her obligations under a
51 contract or agreement made concerning the transaction.

52 **NOTICE ABOUT SEX OFFENDER REGISTRY** You may obtain information about the sex offender registry and persons
53 registered with the registry by contacting the Wisconsin Department of Corrections on the Internet at
54 <http://www.doc.wi.gov> or by telephone at 608-240-5830.

No representation is made as to the legal validity of any provision or the adequacy of any provision in any specific transaction.
Copyright © 2016 by Wisconsin REALTORS® Association Drafted by Attorney Debra Peterson Conrad

Disclaimer



REALTY GROUP eXpCOMMERCIAL



eXp Commercial, LLC, a Delaware limited liability company operates a commercial real estate business and is an affiliate (“Affiliate”) of eXp World Holdings, Inc., a Delaware corporation (together with its subsidiaries and Affiliate, “eXp”). eXp and the reported owner(s) (“Owner(s)”) of the property referenced herein (“Property”) present this Confidential Offering Memorandum (“Memorandum”) to assist the recipient(s) (“You” or “Your”) in evaluating the Property and it is intended solely for Your limited use in determining whether you desire to acquire the Property. This Memorandum contains a brief summary of selected information pertaining to the Property and should not be considered all-inclusive or permanent.

The information in this Memorandum has been obtained from sources believed to be reliable, however, eXp has not verified it and neither Owner(s) nor eXp make any guaranty, warranty or representation, express or implied, as to the accuracy or completeness of this Memorandum or the information contained herein. It is highly recommended that You independently verify each item of information contained in this Memorandum and have the same reviewed by your tax accountant, investment advisor, and/or legal counsel. This Memorandum and any ongoing or future communications You may have with eXp and/or Owner(s) and its and their respective officers, brokers, agents, affiliates or employees regarding this Memorandum or the Property does not in any way constitute or convey any guaranty, warranty or representation, express or implied, or legal, investment or tax advice to You. All assumptions, projections, estimates and/or opinions expressed or implied in this Memorandum are provided as examples only and all information is subject to change, error, omissions and/or withdrawal without notice. Any references in the Memorandum to boundary, area, height, acreage, building or premises size or square footage are approximations only and should be independently verified by You.

Any references in the Memorandum to any lease or tenant information, including and without limitation to the premises, rental rates, rent escalations, common area expenses, percentage rents and lease maturities should be independently verified by You. You should conduct your own investigations and due diligence of the Property, including without limitation to environmental and physical condition inspections and reach your own conclusions regarding the suitability of the Property for investment. eXp and Owner(s) assume no responsibility for the accuracy or completeness of any information contained in this Memorandum. eXp and Owner(s) expressly disclaim any implied or expressed warranties of merchantability, fitness for a particular purpose or noninfringement of intellectual property relating to this Memorandum. In no event shall eXp or Owner(s), and its and their respective officers, brokers, agents, affiliates or employees, be liable for any damages resulting from the reliance on or use of any information in this Memorandum, including but not limited to direct, special, indirect, consequential or incidental damages.

By accepting receipt of this Memorandum, You agree to the following: (a) This Memorandum is of a highly confidential nature; it will be held in the strictest confidence and shall be returned to eXp upon request; (b) You will not contact any property manager, contractor, employee or tenant of the Property regarding the Property or this Memorandum, without prior approval of eXp or Owner(s); and (c) You understand and agree that Affiliate represents Owner(s) and not You and (iv) this Memorandum and the information contained herein shall not be used by You in any way that is detrimental to Owner(s), or eXp. Neither eXp nor Owner(s) shall have any obligation to pay any commission, finder’s fee, or any other compensation to any Broker, Agent or other person. You may provide information to persons retained by You to evaluate the Property only after first obtaining a signed Confidentiality Agreement from such persons and providing a copy of such agreement to eXp via email at legal@exprealty.net. The Owner(s) shall have no legal commitment or obligation to You or any person(s) or entity reviewing this Memorandum or making an offer to purchase, lease, or finance the Property unless and until written agreement(s) for the purchase or finance of the Property are considered satisfactory to Owner(s) in its sole and absolute discretion and have been fully executed, delivered, and approved by the Owner(s) and any conditions to the Owner’s obligations therein have been fully satisfied or waived. The Owner(s) expressly reserves the right, at its sole and absolute discretion, to reject any or all expressions of interest or offers to purchase or lease the Property, and/or to terminate discussion with You or any other person or entity at any time with or without notice, which may or may not arise as a result of review of the Memorandum.