

## SUITE 101 – N | 1,020 SF

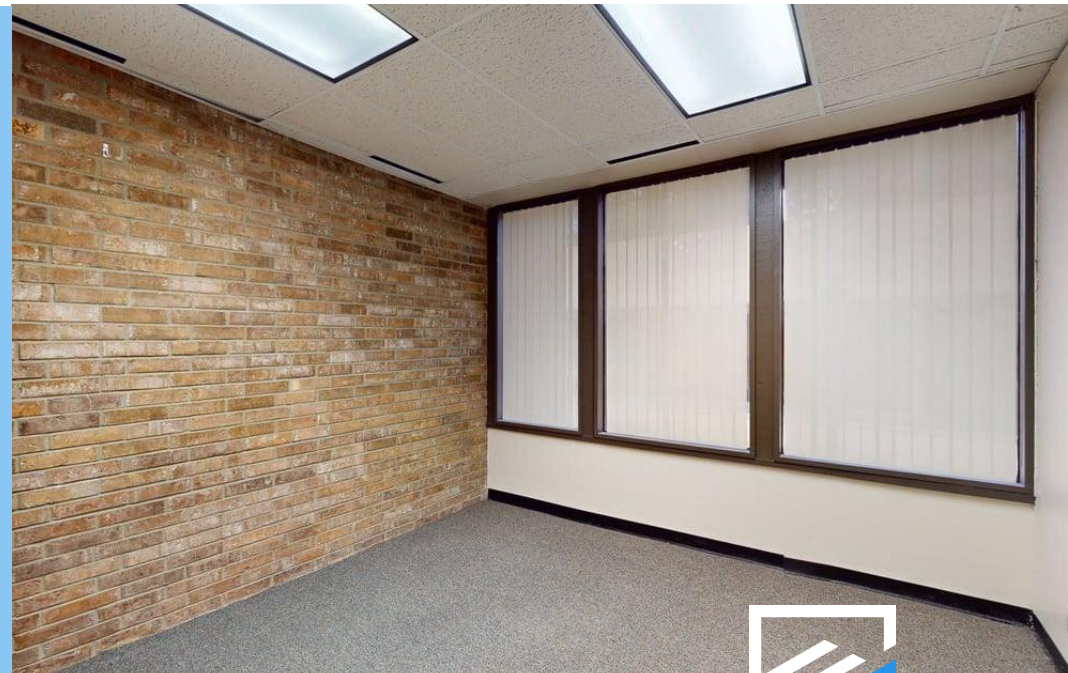
Position your business for success at 6800 Park Ten Blvd, Suite 101 North, in San Antonio, TX. This 1,020-square-foot ground-floor office suite features a versatile layout with eight individual rooms designed to support a wide range of professional or administrative uses. Neutral finishes, gray low-pile carpeting, and recessed fluorescent lighting create a clean and functional workspace throughout.

Several offices include exterior-facing windows with vertical blinds, providing natural light and adjustable privacy. A distinctive exposed brick accent wall paired with large windows adds warmth and character rarely found in traditional office suites. Dark wood-toned doors and select wood wainscoting enhance the professional atmosphere, while the flexible floor plan accommodates private offices, collaborative workspaces, storage, or reception functions to fit your business needs.

For leasing information or to schedule a tour, please contact Yvonne Elizondo.

### SPACE HIGHLIGHTS

- Ground Floor Suite
- 8 Private Rooms
- Exposed Brick Wall
- Natural Light Offices
- Flexible Layout
- Professional Finishes



## SUITE 101 – N | 1,020 SF

