

.14 ACRES
LAND



FOR SALE



3338 and 3342 Bagley Street

Detroit, Michigan 48216

Property Highlights

- 0.14 Acres
- B-4 General Business District
- Commercial Vacant/ Paved Parking Lot
- Mexicantown-Southwest Detroit/Hubbard Farms District
- Blocks away from Corktown

OFFERING SUMMARY

Sale Price:	Contact Listing Agent(s)
Lot Size:	0.14 Acres

DEMOGRAPHICS	1 MILE	3 MILES	5 MILES
Total Households	5,270	54,356	123,119
Total Population	10,087	99,762	225,211
Average HH Income	\$36,656	\$40,260	\$34,848

NAI Farbman

Commercial Real Estate Services, Worldwide.

www.naifarbman.com

Harrison Yaldeo
Sales Associate | 313.953.0430
yaldeo@farbman.com

Wendy Acho
Leasing and Sales Associate | 248.563.0739
acho@farbman.com

NO WARRANTY, EXPRESS OR IMPLIED, IS MADE AS TO THE ACCURACY OF THE INFORMATION CONTAINED HEREIN. THIS INFORMATION IS SUBMITTED SUBJECT TO ERRORS, OMISSIONS, CHANGE OF PRICE, RENTAL OR OTHER CONDITIONS, WITHDRAWAL WITHOUT NOTICE, AND IS SUBJECT TO ANY SPECIAL LISTING CONDITIONS IMPOSED BY OUR PRINCIPALS, COOPERATING BROKERS, BUYERS, TENANTS AND OTHER PARTIES WHO RECEIVE THIS DOCUMENT SHOULD NOT RELY ON IT, BUT SHOULD USE IT AS A STARTING POINT OF ANALYSIS, AND SHOULD INDEPENDENTLY CONFIRM THE ACCURACY OF THE INFORMATION CONTAINED HEREIN THROUGH A DUE DILIGENCE REVIEW OF THE BOOKS, RECORDS, FILES AND DOCUMENTS THAT CONSTITUTE RELIABLE SOURCES OF THE INFORMATION DESCRIBED HEREIN. LOGOS ARE FOR IDENTIFICATION PURPOSES ONLY AND MAY BE TRADEMARKS OF THEIR RESPECTIVE COMPANIES. NAI Farbman, INC. CA BRE LIC. #01990696.

**.14 ACRES
LAND**



FOR SALE



NAI Farbman

Commercial Real Estate Services, Worldwide.

www.naifarbman.com

Harrison Yaldeo
Sales Associate | 313.953.0430
yaldeo@farbman.com

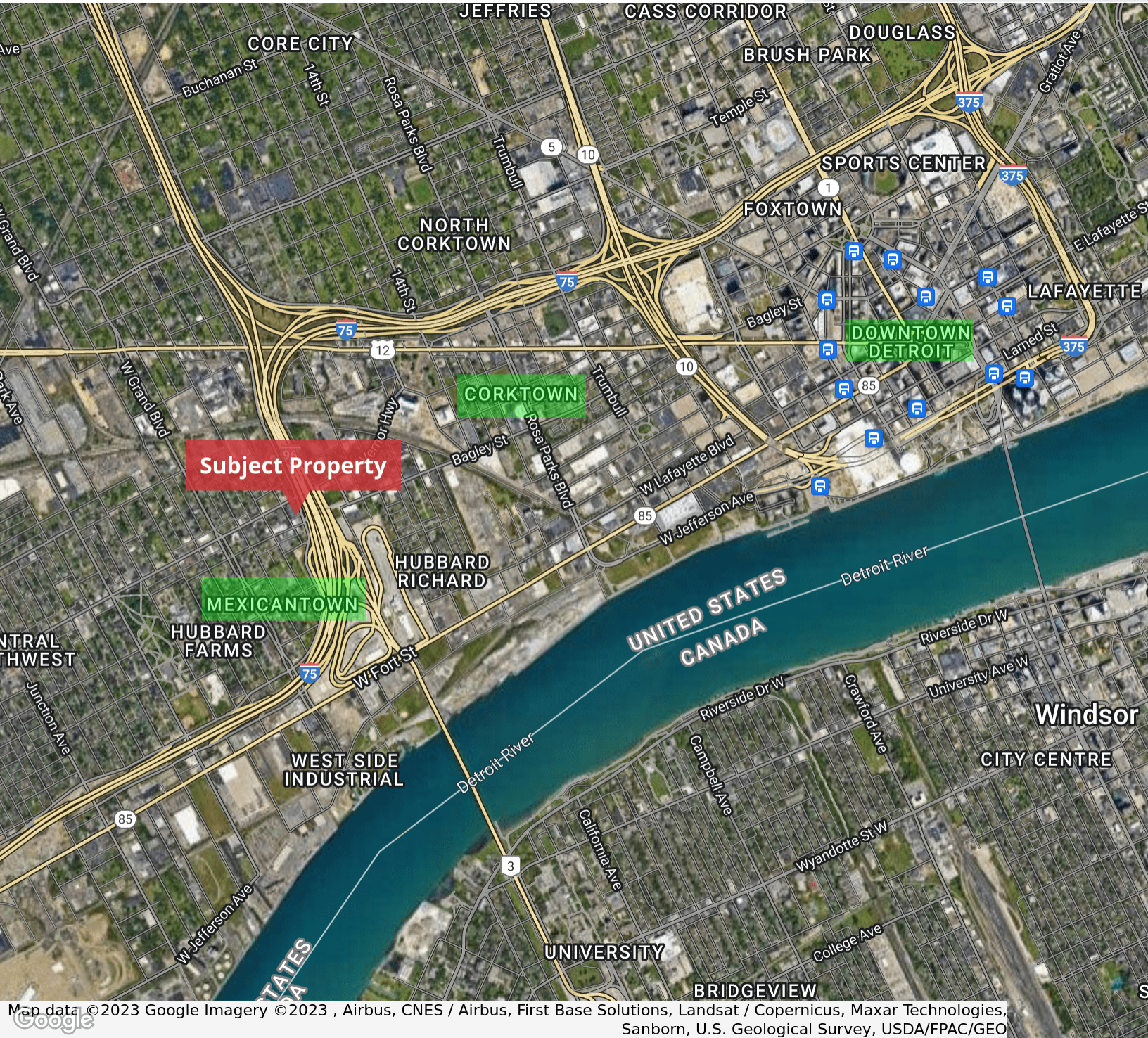
Wendy Acho
Leasing and Sales Associate | 248.563.0739
acho@farbman.com

NO WARRANTY, EXPRESS OR IMPLIED, IS MADE AS TO THE ACCURACY OF THE INFORMATION CONTAINED HEREIN. THIS INFORMATION IS SUBMITTED SUBJECT TO ERRORS, OMISSIONS, CHANGE OF PRICE, RENTAL OR OTHER CONDITIONS, WITHDRAWAL WITHOUT NOTICE, AND IS SUBJECT TO ANY SPECIAL LISTING CONDITIONS IMPOSED BY OUR PRINCIPALS. COOPERATING BROKERS, BUYERS, TENANTS AND OTHER PARTIES WHO RECEIVE THIS DOCUMENT SHOULD NOT RELY ON IT, BUT SHOULD USE IT AS A STARTING POINT OF ANALYSIS, AND SHOULD INDEPENDENTLY CONFIRM THE ACCURACY OF THE INFORMATION CONTAINED HEREIN THROUGH A DUE DILIGENCE REVIEW OF THE BOOKS, RECORDS, FILES AND DOCUMENTS THAT CONSTITUTE RELIABLE SOURCES OF THE INFORMATION DESCRIBED HEREIN. LOGOS ARE FOR IDENTIFICATION PURPOSES ONLY AND MAY BE TRADEMARKS OF THEIR RESPECTIVE COMPANIES. NAI Farbman, INC. CA BRE LIC. #01990696.

.14 ACRES
LAND



FOR SALE



Map data © 2023 Google Imagery © 2023, Airbus, CNES / Airbus, First Base Solutions, Landsat / Copernicus, Maxar Technologies, Sanborn, U.S. Geological Survey, USDA/FPAC/GEO



Commercial Real Estate Services, Worldwide.
www.naifarbman.com

Harrison Yaldeo
Sales Associate | 313.953.0430
yaldeo@farbman.com

Wendy Acho
Leasing and Sales Associate | 248.563.0739
acho@farbman.com

NO WARRANTY, EXPRESS OR IMPLIED, IS MADE AS TO THE ACCURACY OF THE INFORMATION CONTAINED HEREIN. THIS INFORMATION IS SUBMITTED SUBJECT TO ERRORS, OMISSIONS, CHANGE OF PRICE, RENTAL OR OTHER CONDITIONS, WITHDRAWAL WITHOUT NOTICE, AND IS SUBJECT TO ANY SPECIAL LISTING CONDITIONS IMPOSED BY OUR PRINCIPALS. COOPERATING BROKERS, BUYERS, TENANTS AND OTHER PARTIES WHO RECEIVE THIS DOCUMENT SHOULD NOT RELY ON IT, BUT SHOULD USE IT AS A STARTING POINT OF ANALYSIS, AND SHOULD INDEPENDENTLY CONFIRM THE ACCURACY OF THE INFORMATION CONTAINED HEREIN THROUGH A DUE DILIGENCE REVIEW OF THE BOOKS, RECORDS, FILES AND DOCUMENTS THAT CONSTITUTE RELIABLE SOURCES OF THE INFORMATION DESCRIBED HEREIN. LOGOS ARE FOR IDENTIFICATION PURPOSES ONLY AND MAY BE TRADEMARKS OF THEIR RESPECTIVE COMPANIES. NAI Farbman, INC. CA BRE LIC. #01990696.

**.14 ACRES
LAND**



FOR SALE

CERTIFICATE OF SURVEY

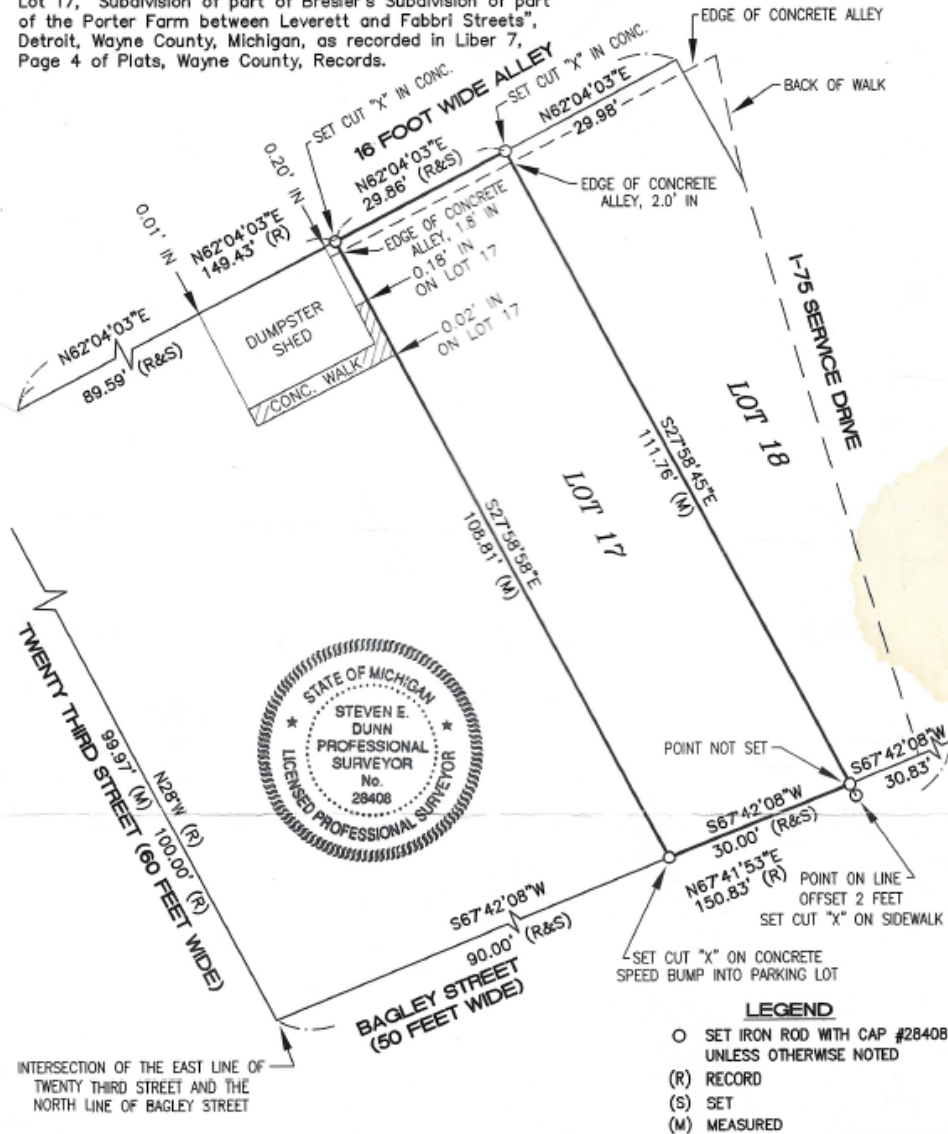
METCO SERVICES, INC.
Professional Surveyors

12504 STEPHENS WARREN, MI 48089
PHONE NUMBER (810) 755-5770
FAX NUMBER (810) 755-5774
E-MAIL metco@juno.com



LEGAL DESCRIPTION

Lot 17, "Subdivision of part of Bresler's Subdivision of part of the Porter Farm between Leverett and Fabbri Streets", Detroit, Wayne County, Michigan, as recorded in Liber 7, Page 4 of Plats, Wayne County, Records.

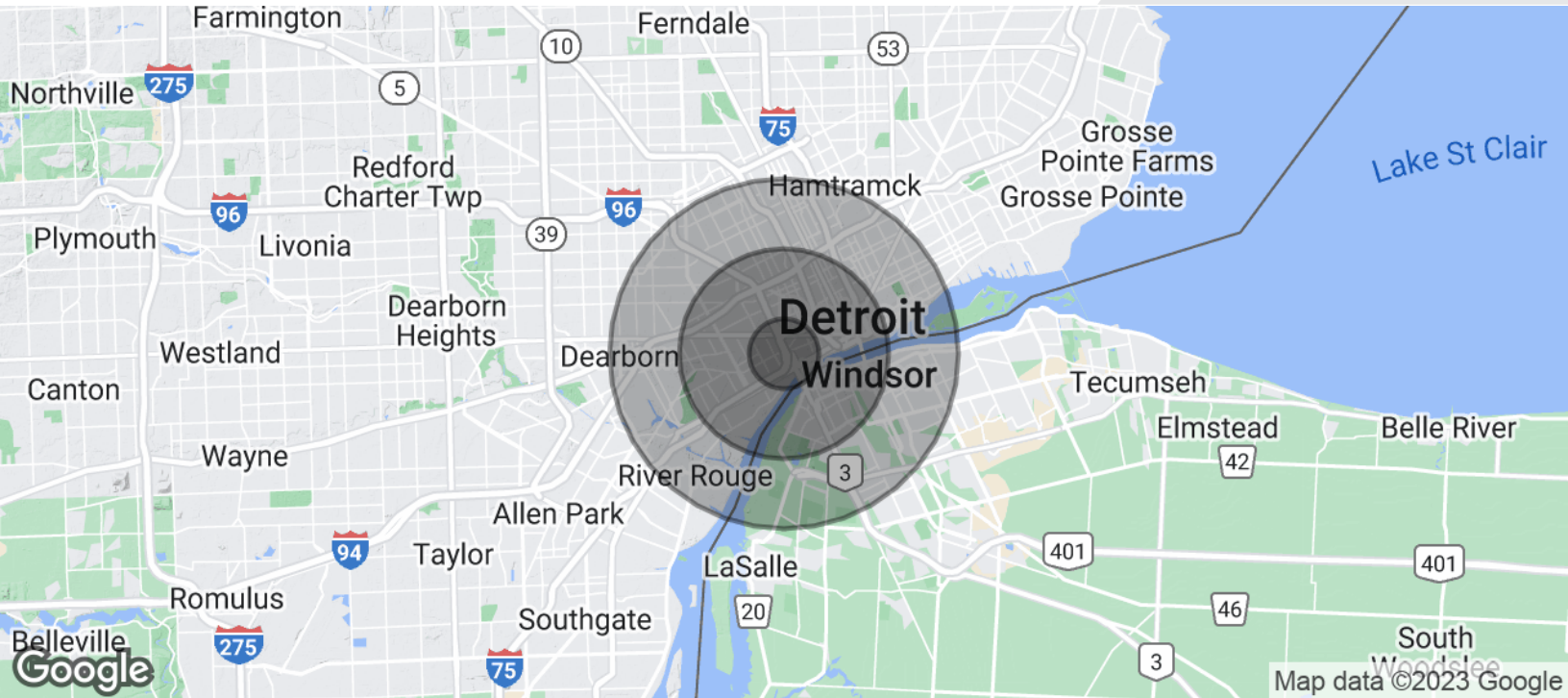


- LEGEND**
- SET IRON ROD WITH CAP #28408 UNLESS OTHERWISE NOTED
 - (R) RECORD
 - (S) SET
 - (M) MEASURED

.14 ACRES LAND



FOR SALE



POPULATION	1 MILE	3 MILES	5 MILES
Total Population	10,087	99,762	225,211
Average Age	37.1	33.3	34.4
Average Age (Male)	38.5	32.2	33.3
Average Age (Female)	35.4	34.3	35.5
HOUSEHOLDS & INCOME	1 MILE	3 MILES	5 MILES
Total Households	5,270	54,356	123,119
# of Persons per HH	1.9	1.8	1.8
Average HH Income	\$36,656	\$40,260	\$34,848
Average House Value	\$111,824	\$114,117	\$99,360

* Demographic data derived from 2020 ACS - US Census



Commercial Real Estate Services, Worldwide.
www.naifarbman.com

Harrison Yaldeo
Sales Associate | 313.953.0430
yaldeo@farbman.com

Wendy Acho
Leasing and Sales Associate | 248.563.0739
acho@farbman.com

NO WARRANTY, EXPRESS OR IMPLIED, IS MADE AS TO THE ACCURACY OF THE INFORMATION CONTAINED HEREIN. THIS INFORMATION IS SUBMITTED SUBJECT TO ERRORS, OMISSIONS, CHANGE OF PRICE, RENTAL OR OTHER CONDITIONS, WITHDRAWAL WITHOUT NOTICE, AND IS SUBJECT TO ANY SPECIAL LISTING CONDITIONS IMPOSED BY OUR PRINCIPALS, COOPERATING BROKERS, BUYERS, TENANTS AND OTHER PARTIES WHO RECEIVE THIS DOCUMENT SHOULD NOT RELY ON IT, BUT SHOULD USE IT AS A STARTING POINT OF ANALYSIS, AND SHOULD INDEPENDENTLY CONFIRM THE ACCURACY OF THE INFORMATION CONTAINED HEREIN THROUGH A DUE DILIGENCE REVIEW OF THE BOOKS, RECORDS, FILES AND DOCUMENTS THAT CONSTITUTE RELIABLE SOURCES OF THE INFORMATION DESCRIBED HEREIN. LOGOS ARE FOR IDENTIFICATION PURPOSES ONLY AND MAY BE TRADEMARKS OF THEIR RESPECTIVE COMPANIES. NAI Farbman, INC. CA BRE LIC. #01990696.